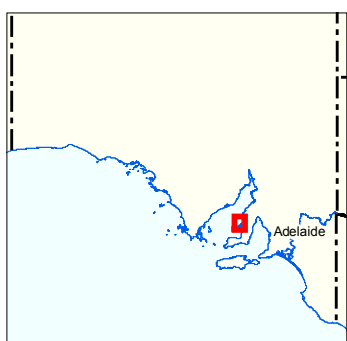
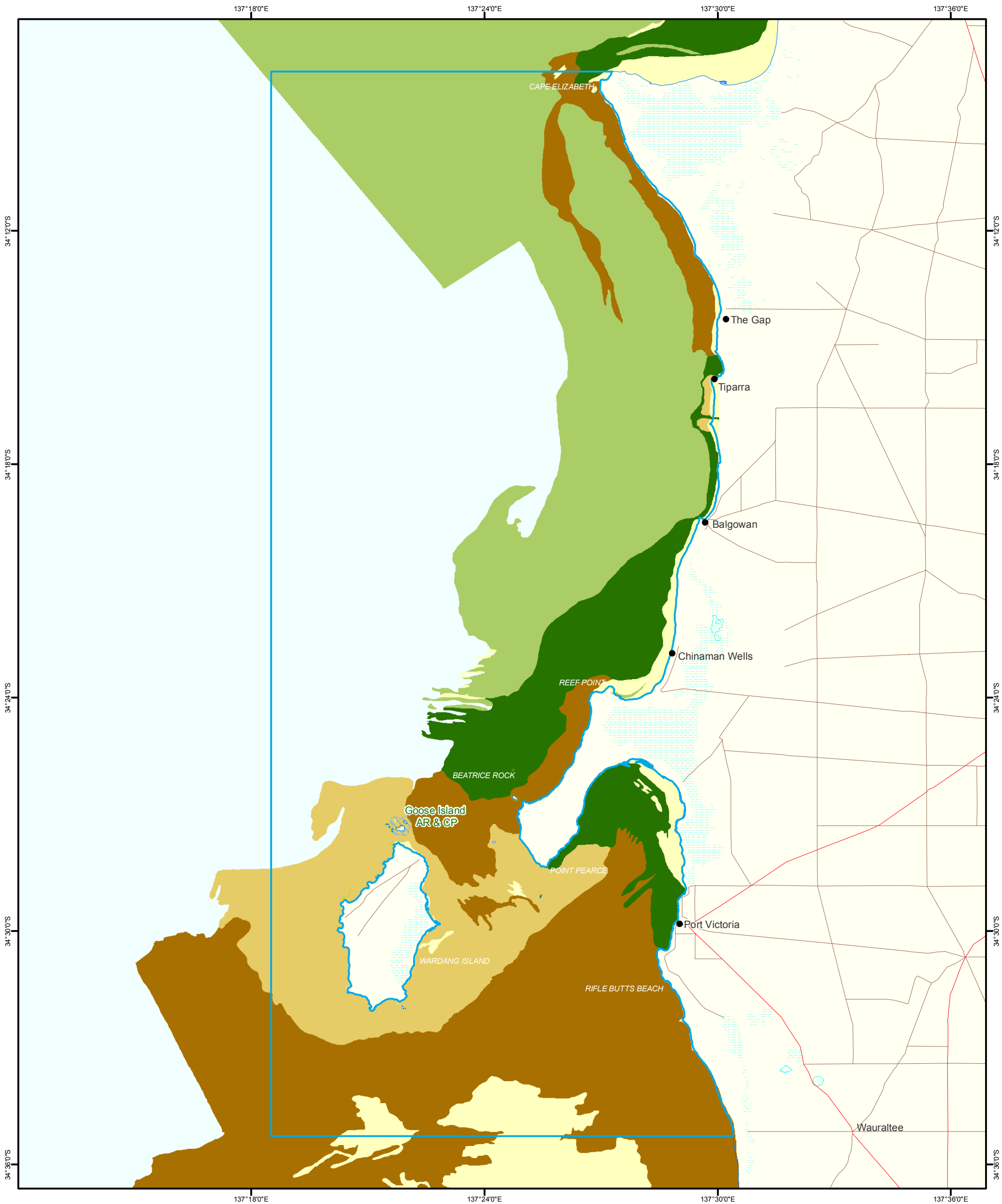
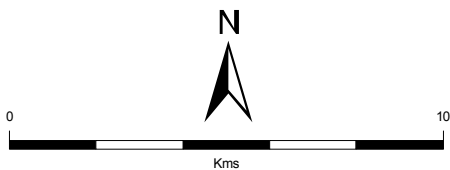


**Figure 5A : Eastern Spencer Gulf Marine Park**  
National Benthic Habitats



- |                                   |                               |
|-----------------------------------|-------------------------------|
| Dense Seagrass                    | Marine Parks                  |
| Medium Seagrass                   | Coastline (median high water) |
| Heavy Limestone or Calcarene Reef | Major Road                    |
| Low Profile Platform Reef         | Minor Road                    |
| Unvegetated Soft Bottom           |                               |
| Parks and Reserves                |                               |
| Aquatic Reserves                  |                               |
| Lake - Intermittent               |                               |
| Land Subject to Inundation (STI)  |                               |



**Produced by** Coast and Marine Conservation  
Department for Environment and Heritage  
GPO BOX 1047 Adelaide SA 5001  
[www.marineparks.sa.gov.au](http://www.marineparks.sa.gov.au)

**Data Source** Marine Parks, Parks and Reserves,  
Topographic Data - DEH  
Aquatic Reserves - PIRSA  
Benthic Habitat Mapping - CSIRO, SARDI-PIRSA & DEH

**Compiled** 16 March 2010

**Projection** Geographic

**Datum** Geocentric Datum of Australia, 1994

© Copyright Department for Environment and Heritage 2010.  
All Rights Reserved. All works and information displayed are subject to Copyright. For the reproduction or publication beyond that permitted by the Copyright Act 1968 (Cwth) written permission must be sought from the Department.  
Although every effort has been made to ensure the accuracy of the information displayed, the Department, its agents, officers and employees make no representations, either express or implied, that the information displayed is accurate or fit for any purpose and expressly disclaims all liability for loss or damage arising from reliance upon the information displayed.

