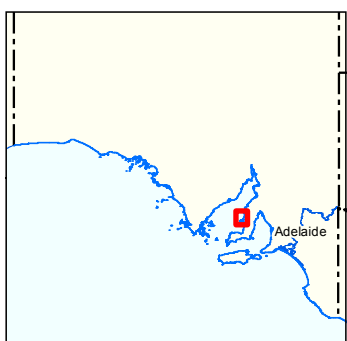
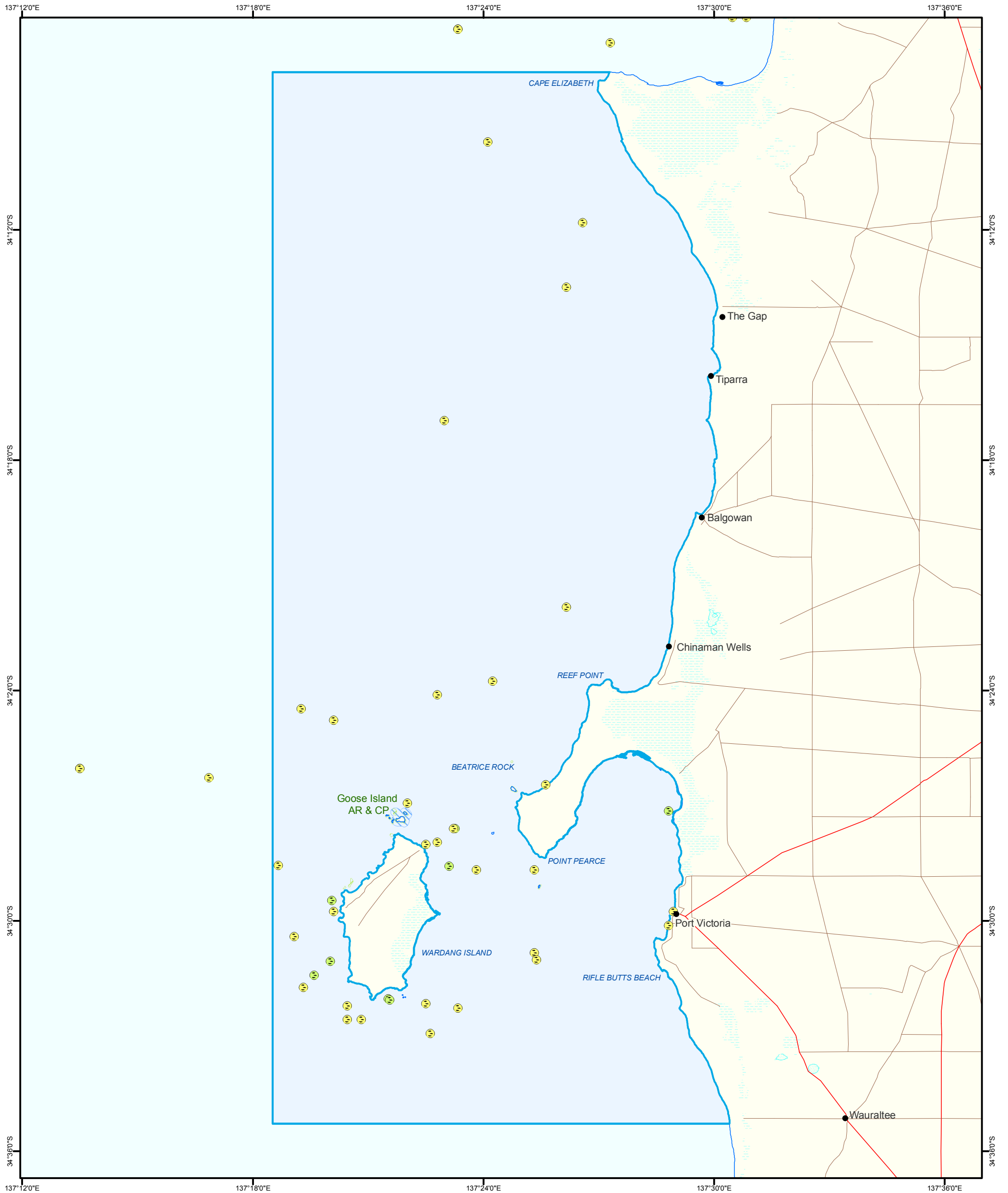


Figure 14: Eastern Spencer Gulf Marine Park
 Published Recreational Fishing Sites (1998) and Diving Sites



- Marine Parks
- Parks and Reserves
- Aquatic Reserves
- Lake - Intermittent
- Land Subject to Inundation (STI)
- Coastline (median high water)
- Major Road
- Minor Road

- Recreational Fishing Sites
- Recreational Diving Sites

Pescatore and Ellis
 'Country GPS Marks in
 South Australia', 1998

Produced by Coast and Marine Conservation
 Department for Environment and Heritage
 GPO BOX 1047 Adelaide SA 5001
Data Source www.marineparks.sa.gov.au
 Marine Parks, Parks and Reserves,
 Topographic Data,
 Recreational Fishing and Diving Sites - DEH
 Aquatic Reserves - PIRSA
Compiled 12 August 2010
Projection Geographic
Datum Geocentric Datum of Australia, 1994

© Copyright Department for Environment and Heritage 2010.
 All Rights Reserved. All works and information displayed are subject to Copyright. For
 the reproduction or publication beyond that permitted by the Copyright Act 1968 (Cwth)
 written permission must be sought from the Department.
 Although every effort has been made to ensure the accuracy of the information displayed,
 the Department, its agents, officers and employees make no representations, either express
 or implied, that the information displayed is accurate or fit for any purpose and expressly
 disclaims all liability for loss or damage arising from reliance upon the information displayed.

