

# West Coast Bays Marine Park

Management plan summary



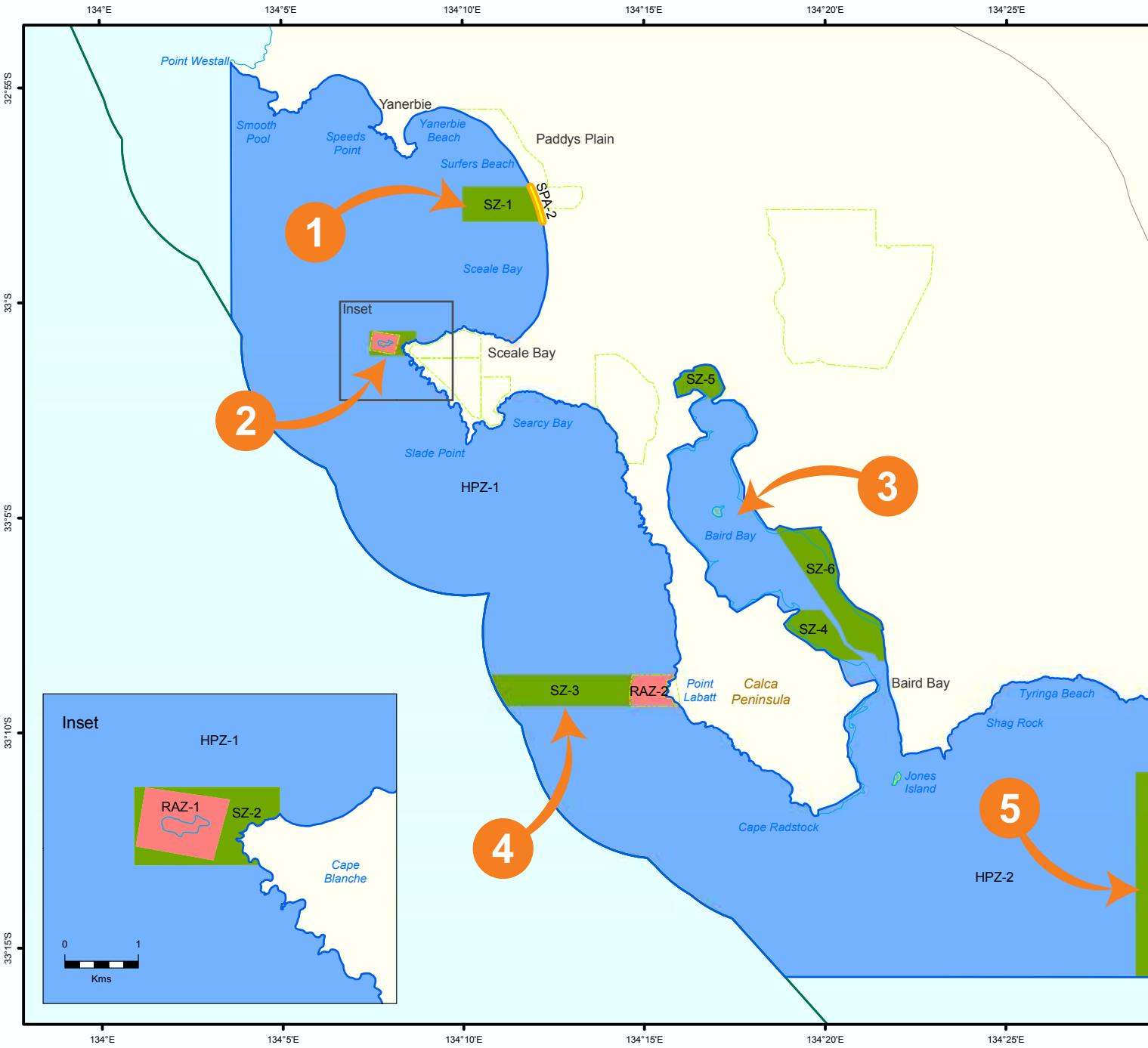
**ENJOY LIFE IN OUR  
MARINE PARKS.**



Government  
of South Australia

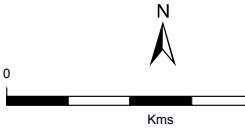
[www.marineparks.sa.gov.au](http://www.marineparks.sa.gov.au)

Marine Park 3 - West Coast Bays

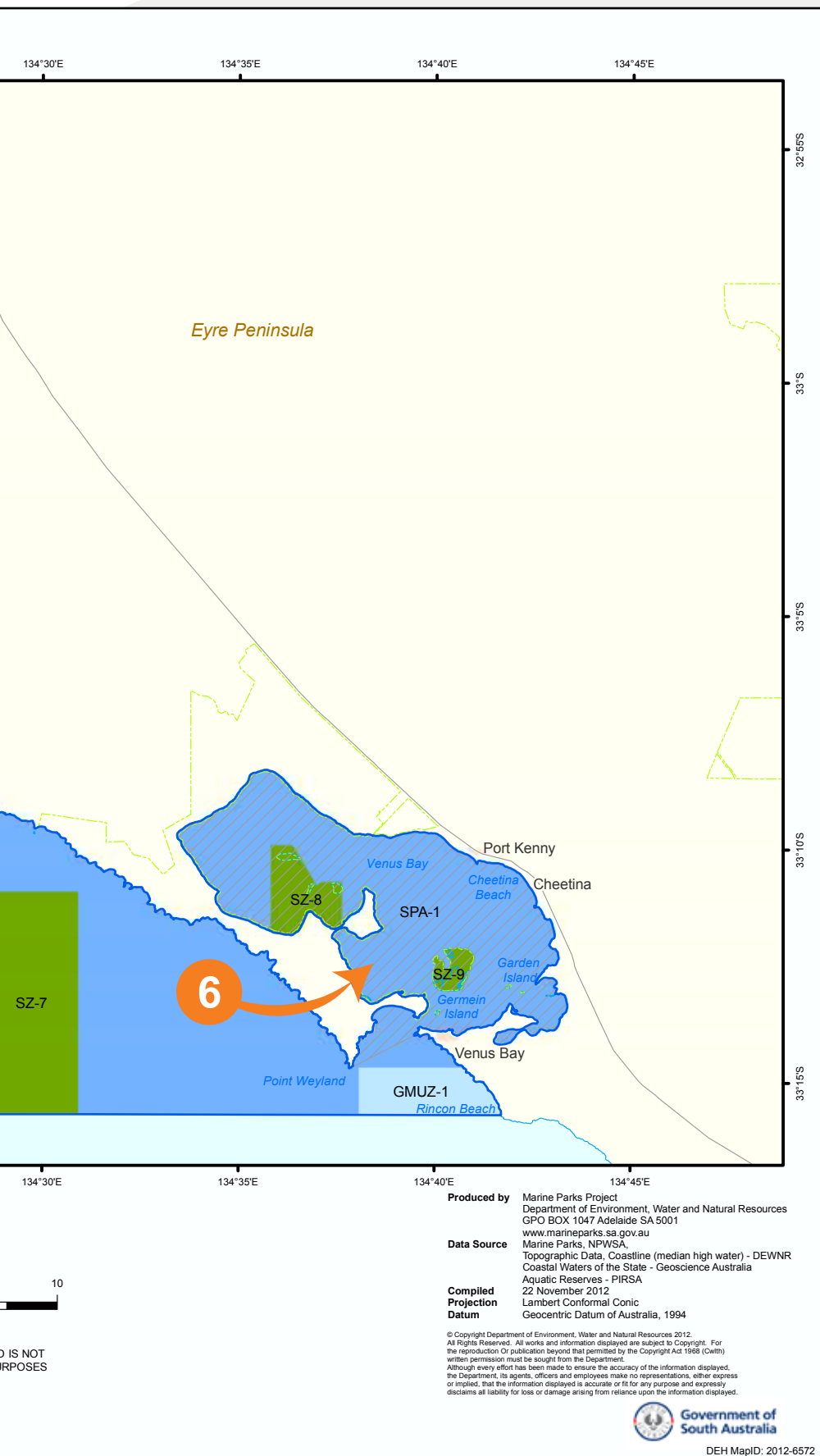


- Marine Park Zoning**
- Restricted Access Zone (Existing)
  - Sanctuary Zone
  - Habitat Protection Zone
  - General Managed Use Zone
  - Special Purpose Area (Harbor Activities)
  - Special Purpose Area (Shore-based recreational line fishing)

- Topographic**
- Built Up Area
  - Marine Park Boundary
  - Existing Reserves under other Acts
  - Coastal Waters of the State
  - Coastline (median high water)
  - Major Road



THIS MAP IS INDICATIVE ONLY AND NOT INTENDED FOR NAVIGATIONAL PURPOSES



1



### Sceale Bay SZ

Chosen for sanctuary zone due to good example of local beach, sandy bottom, seagrass and reef habitats. Includes some internationally important shorebird habitat.

2



### Cape Blanche SZ and RAZ

Home to white bellied sea eagles. Australian sea lion breeding site. Important habitat for reef fish.

3



### Baird Bay SZs

Important fish nursery area. Internationally important shorebird habitat.

4



### Point Labatt SZ

Rare mainland breeding and feeding area for the Australian Sea Lion.

5



### Anxious Bay SZ

Offshore habitat for a variety of fish.

6



### Venus Bay SZs

Fish nursery area. Sand flats and mangrove. Important shorebird habitat.

# What you can do in marine parks

Aquaculture	GMUZ	HPZ	SZ	RAZ
All activities including pilot leases	✓	✓	×	×
Coastal Developments and Infrastructure	GMUZ	HPZ	SZ	RAZ
Marinas, jetties, pontoons, breakwalls, outfall and pipelines, renewable energy infrastructure	✓	✓	×	×
Fishing and Collecting	GMUZ	HPZ	SZ	RAZ
Recreational/commercial fishing (other than trawling)	✓	✓	×	×
Competitions and organised events	✓	✓	×	×
Aboriginal traditional fishing and collecting	✓	✓	✓limit	✓limit
Collecting seagrass/algae and sessile animals	✓	×	×	×
Trawling on or near the seabed	✓	×	×	×
Harbors, Navigation and Transport	GMUZ	HPZ	SZ	RAZ
Navigation markers and aids	✓	✓	✓	✓
General navigation and operation of vessels and anchoring of vessels less than 80m in length	✓	✓	✓	×
Anchoring of vessels – 80 metres and over in length	✓	×	×	×
Permanent vessel mooring	✓	✓	✓permit	×
Dredging and depositing dredged materials	✓	✓limit	×	×
Operating aircraft	✓	✓	✓	✓limit
Recreation, Research and Other Commercial	GMUZ	HPZ	SZ	RAZ
Recreational activities – diving, boating, walking, surfing etc	✓	✓	✓	×
Motorised water sports and aerobatics	✓	✓	×	×
Domestic animals	✓	✓	✓limit	×
Animal feeding/baiting/berleying	✓	✓	×	×
Research	✓	✓	✓permit	✓permit
Commercial photography and film making	✓	✓	✓permit	×
Competitions and organised events (non fishing)	✓	✓	✓permit	×
Tourism operations	✓	✓	✓permit	×
Resource Extraction and Production	GMUZ	HPZ	SZ	RAZ
Active surveying (physical or chemical)	✓	✓	×	×
Direct drilling (mining or petroleum)	✓	×	×	×
Mineral or petroleum processing	×	×	×	×
Wastewater Disposal/Discharges	GMUZ	HPZ	SZ	RAZ
Discharge, extraction and disposal for a desalination plant	✓	✓	×	×
Discharges from vessels	✓	✓	×	×

Where can recreational fishers wet a line?

Zone	✓ or ×
GMUZ	✓
HPZ	✓
SZ	×
RAZ	×

## Notes

✓ permit = a permit is required for this activity

✓ limit = conditions apply when undertaking this activity

- All other laws of this state continue to apply.
- Essential access, such as in the case of an emergency, is permitted in all zones.

For further information see also the full zoning tables describing activities and uses in marine park zones, available at [www.marineparks.sa.gov.au](http://www.marineparks.sa.gov.au) or in *South Australia's Marine Parks Network Explanatory Document*.



# Management strategies for the park

*The West Coast Bays Marine Park Management Plan has been developed around four management priorities and supporting strategies.*

## Protection

1. Manage activities and uses in the marine park in accordance with zoning and special purpose area provisions.
2. Actively influence activities and uses within and adjacent to the marine park to help mitigate threats to marine biodiversity and marine habitats.
3. Consider additional protections and/or temporary restrictions where necessary in circumstances of urgency —
  - (a) to protect a listed species<sup>1</sup> of plant or animal, or threatened ecological community; or
  - (b) to protect a feature of natural or cultural heritage significance; or
  - (c) to protect public safety.
4. Introduce a permitting system to provide for the following activities (where not otherwise authorised):
  - scientific research in a sanctuary or restricted access zone;
  - tourism operations in a sanctuary zone;
  - competitions and organised events in a sanctuary zone;
  - commercial film-making (including sound recording and photography) in a sanctuary zone; and
  - installation of vessel moorings in a sanctuary zone.

## Stewardship through community involvement

5. Provide for public appreciation, understanding and enjoyment of the marine park.
6. Create and promote opportunities for sustainable nature-based tourism in the marine park.
7. Provide education to support the implementation of the marine park.
8. Seek to involve local communities and stakeholders in the day-to-day management and monitoring of the marine park.
9. Work cooperatively with Aboriginal communities to conserve country, plants, animals and culture.

## Performance assessment, knowledge and review

10. Develop and implement a monitoring, evaluation and reporting (MER) program that measures the effectiveness of this marine park management plan and its contribution to South Australia's marine parks network (2011 baseline), and that:
  - is designed to measure the effectiveness of the management plan in delivering the predicted outcomes to inform adaptive management;
  - includes linkages to relevant state, national and international monitoring, evaluation and reporting frameworks;
  - sets out targets and indicators linked to strategies and outcomes for monitoring, which include ecological, socio-economic, environmental and management elements;
  - monitors the delivery of education, research and governance mechanisms; and
  - assesses the effectiveness of compliance activities.
11. Foster partnerships to support the implementation of the MER Program incorporating opportunities for community and stakeholder involvement.
12. Ensure outcomes of the MER Program and research outcomes are made publicly available and inform decision making and periodic review of this management plan.
13. Conduct priority research and foster research partnerships to assess the integrity of knowledge frameworks that underpin the predicted outcomes.
14. Encourage Aboriginal people, local communities and stakeholders to preserve traditional and historic knowledge and, where appropriate, share this knowledge with others.

## Compliance

15. Develop and implement a compliance strategy for the marine park that:
  - is cost-efficient;
  - is focussed on sanctuary zones and other conservation priorities;
  - complements existing compliance efforts;
  - maximises voluntary compliance; and
  - includes measures to address serious or repeat non-compliance.

1. "listed species" and "threatened ecological community" refers to species or ecological communities of conservation concern listed under the *Environment Protection and Biodiversity Conservation Act 1999* (Commonwealth), the *National Parks and Wildlife Act 1972* or the *Fisheries Management Act 2007*.

#### For further information please contact:

Department of Environment, Water and Natural Resources  
Phone Information Line 1800 006 120 or see SA White Pages for your local  
DEWNR office. Online information available at: [www.marineparks.sa.gov.au](http://www.marineparks.sa.gov.au)

©State of South Australia through the Department of Environment, Water and Natural Resources. Apart from fair dealings and other uses permitted by the Copyright Act 1968 (Cth), no part of this publication may be reproduced, published, communicated, transmitted, modified or commercialised without the prior written approval of the Department of Environment, Water and Natural Resources.

Photography: DEWNR, Mary Molloy, Robyn Morcom, Paul Wainwright, Sean Connell

Written requests for permission should be addressed to:

Design and Production Manager, Department of Environment, Water and Natural Resources GPO Box 1047 Adelaide SA 5001

#### Disclaimer

While reasonable efforts have been made to ensure the contents of this publication are factually correct, the Department of Environment, Water and Natural Resources makes no representations and accepts no responsibility for the accuracy, completeness or fitness for any particular purpose of the contents, and shall not be liable for any loss or damage that may be occasioned directly or indirectly through the use of or reliance on the contents of this publication.

Reference to any company, product or service in this publication should not be taken as a Departmental endorsement of the company, product or service.

Printed December 2012 | FIS 91905\_03