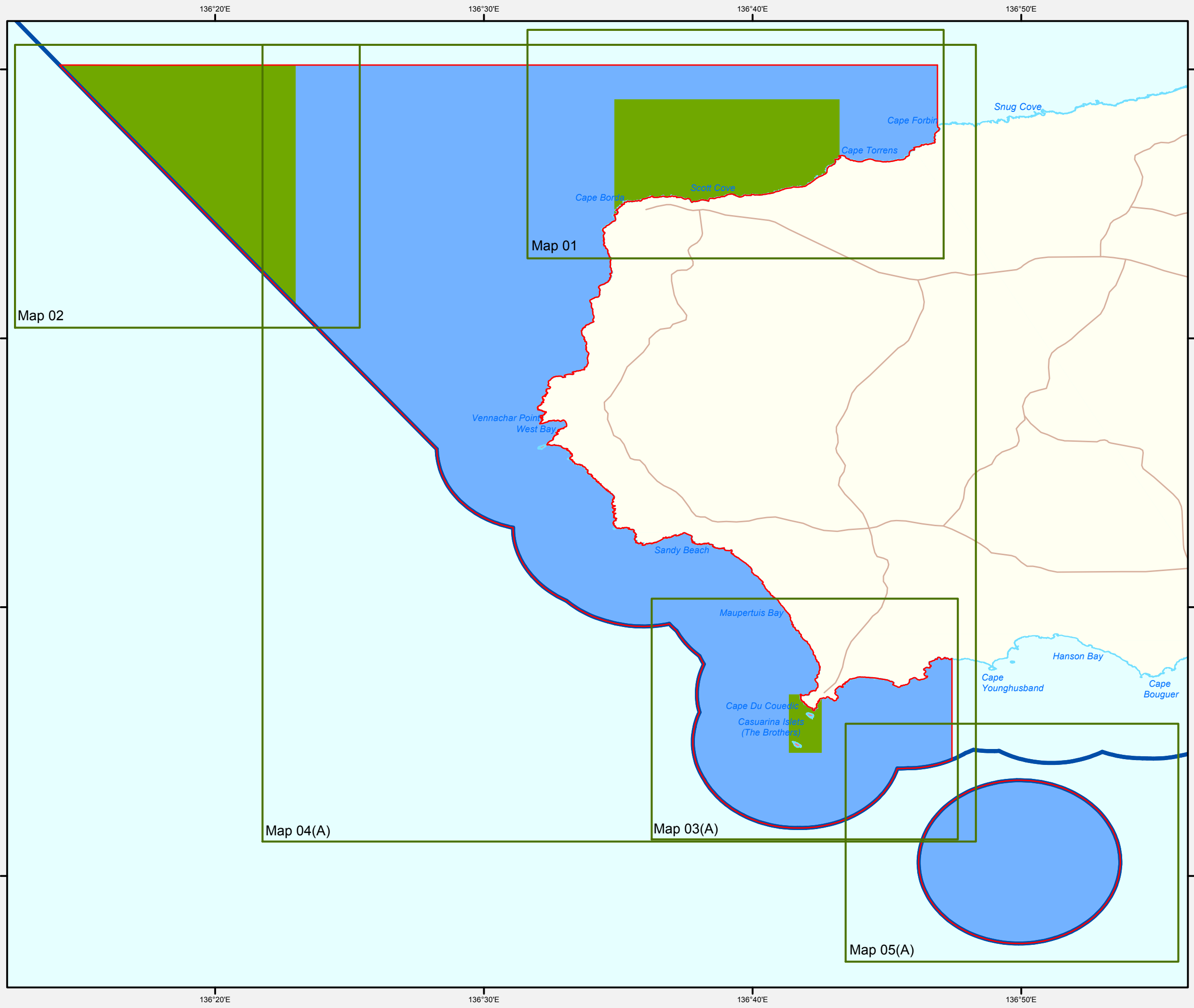
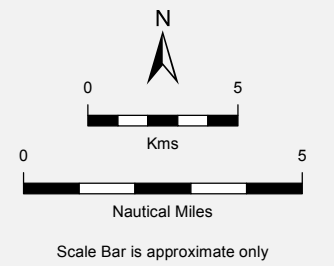


South Australian Marine Park Zoning

Boundary Definition Western Kangaroo Island Marine Park Map 00(A)



- Marine Park Zoning**
- Restricted Access Zone (Existing)
 - Sanctuary Zone
 - Habitat Protection Zone
- Topographic**
- Marine Park Boundary
 - Coastal Waters of the State
 - Coastline (median high water)
 - Major Road



THIS MAP IS INDICATIVE ONLY AND IS NOT INTENDED FOR NAVIGATIONAL PURPOSES



Produced by Marine Parks Project
 Department for Environment and Water
 GPO BOX 1047 Adelaide SA 5001
www.marineparks.sa.gov.au

Data Source
 Marine Parks, NPWSA, Topographic Data
 Coastline (median high water) - DEW (dataset #2096, Topography - Coastline, last updated September 2016)
 Coastal Waters of the State - Geoscience Australia (dataset #319, Australian Maritime Boundaries, last updated February 2006)

Compiled 12 January 2022
Projection Geographic
Datum Geocentric Datum of Australia, 1994

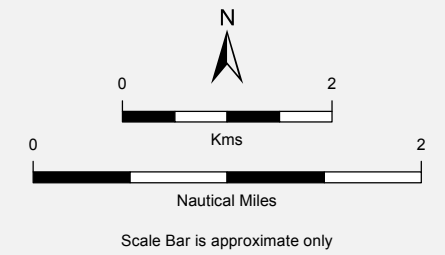
© Copyright Department for Environment and Water 2022. All Rights Reserved. All works and information displayed are subject to Copyright. For the reproduction or publication beyond that permitted by the Copyright Act 1968 (Cwth) written permission must be sought from the Department.

Although every effort has been made to ensure the accuracy of the information displayed, the Department, its agents, officers and employees make no representations, either express or implied, that the information displayed is accurate or fit for any purpose and expressly disclaims all liability for loss or damage arising from reliance upon the information displayed.

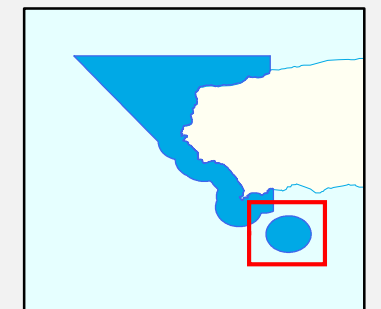
South Australian Marine Park Zoning

Boundary Definition Western Kangaroo Island Marine Park Map 05(A) Habitat Protection Zone 2

- Marine Park Zoning**
- Habitat Protection Zone
- Topographic**
- Marine Park Boundary
 - Coastal Waters of the State



THIS MAP IS INDICATIVE ONLY AND IS NOT INTENDED FOR NAVIGATIONAL PURPOSES



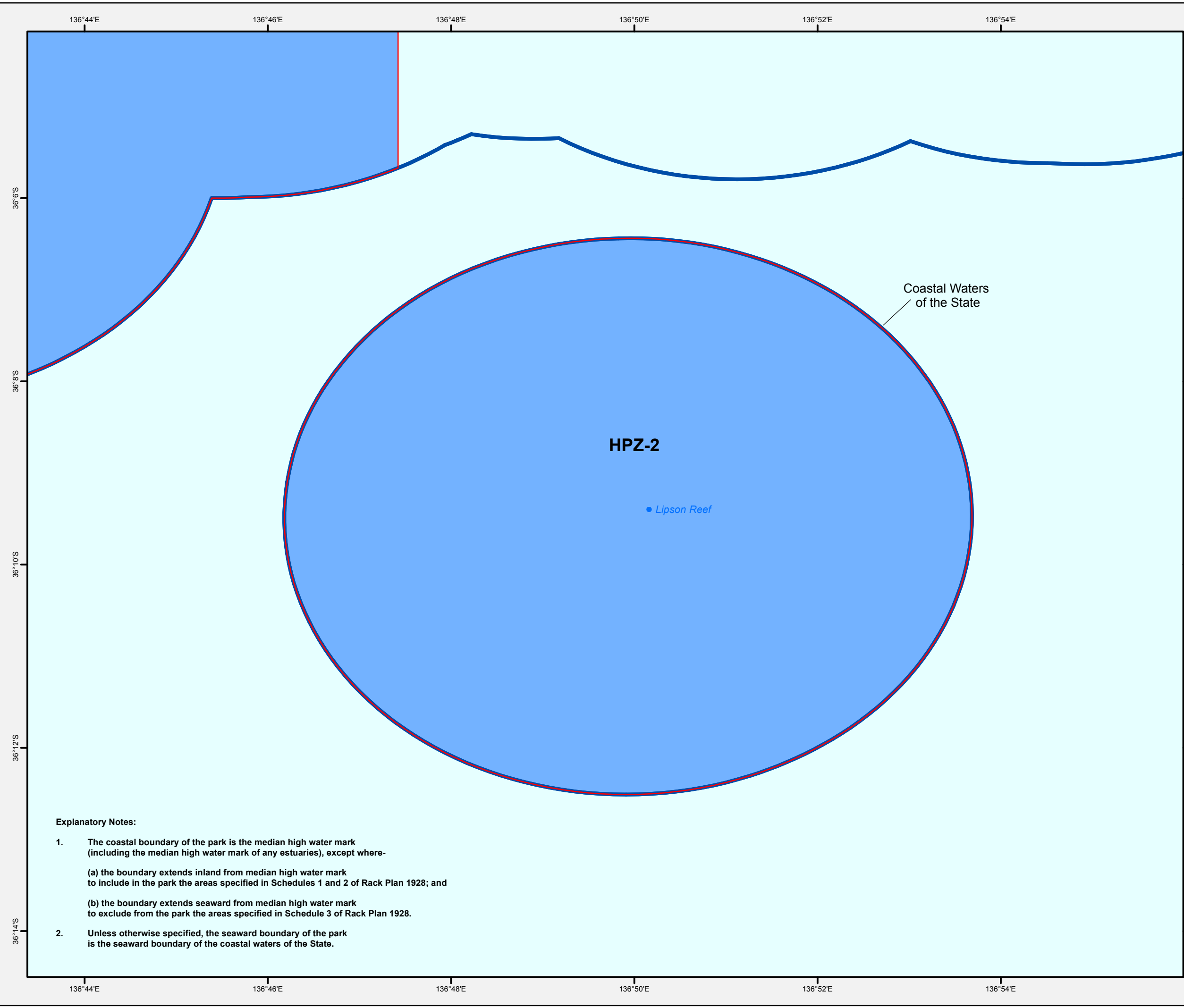
Produced by Marine Parks Project
Department for Environment and Water
GPO BOX 1047 Adelaide SA 5001
www.marineparks.sa.gov.au

Data Source Marine Parks, NPWSA, Topographic Data, Coastline (median high water) - DEW (dataset #2096, Topography - Coastline, last updated September 2016)
DCDB - AGD
Coastal Waters of the State - Geoscience Australia (dataset #319, Australian Maritime Boundaries, last updated February 2006)

Compiled 12 January 2022
Projection Geographic
Datum Geocentric Datum of Australia, 1994

© Copyright Department for Environment and Water 2022.
All Rights Reserved. All works and information displayed are subject to Copyright. For the reproduction or publication beyond that permitted by the Copyright Act 1968 (Cwlth) written permission must be sought from the Department.

Although every effort has been made to ensure the accuracy of the information displayed, the Department, its agents, officers and employees make no representations, either express or implied, that the information displayed is accurate or fit for any purpose and expressly disclaims all liability for loss or damage arising from reliance upon the information displayed.



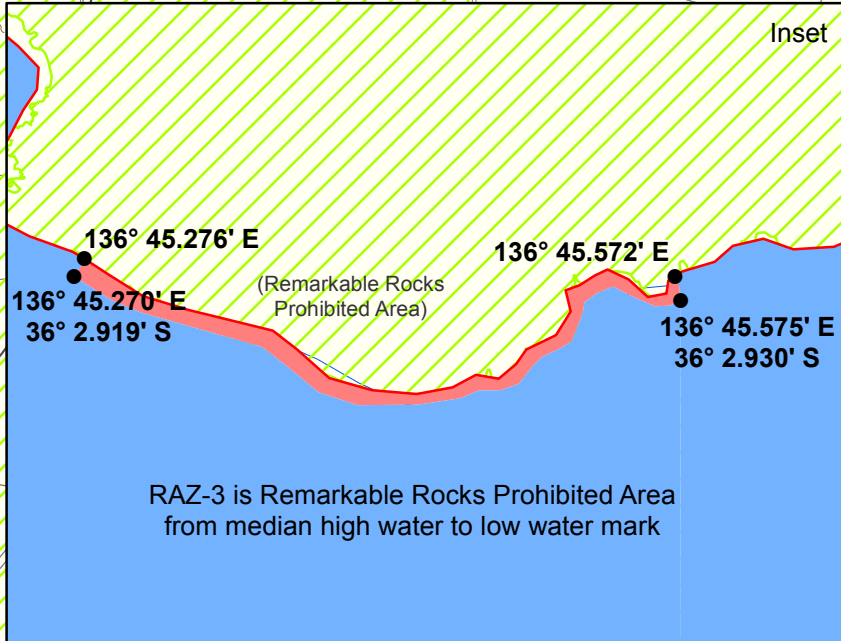
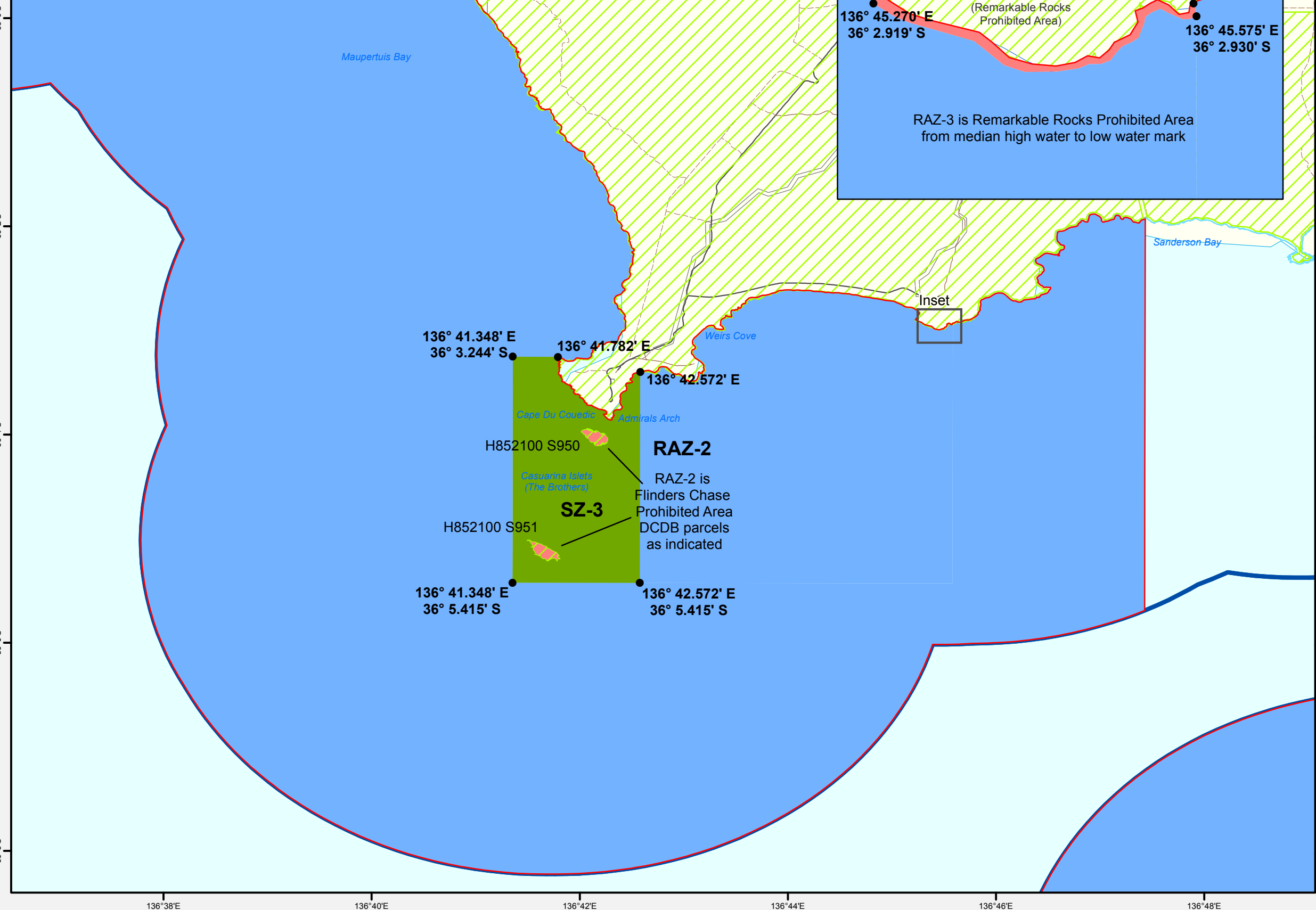
- Explanatory Notes:**
1. The coastal boundary of the park is the median high water mark (including the median high water mark of any estuaries), except where-
 - (a) the boundary extends inland from median high water mark to include in the park the areas specified in Schedules 1 and 2 of Rack Plan 1928; and
 - (b) the boundary extends seaward from median high water mark to exclude from the park the areas specified in Schedule 3 of Rack Plan 1928.
 2. Unless otherwise specified, the seaward boundary of the park is the seaward boundary of the coastal waters of the State.

South Australian Marine Park Zoning

Boundary Definition Western Kangaroo Island Marine Park Map 03(A) Restricted Access Zones 2, 3 Sanctuary Zone 3

Explanatory Notes:

- The coastal boundary of the park is the median high water mark (including the median high water mark of any estuaries), except where-
 (a) the boundary extends inland from median high water mark to include in the park the areas specified in Schedules 1 and 2 of Rack Plan 1928; and
 (b) the boundary extends seaward from median high water mark to exclude from the park the areas specified in Schedule 3 of Rack Plan 1928.
- Unless otherwise specified, the seaward boundary of the park is the seaward boundary of the coastal waters of the State.



RAZ-3 is Remarkable Rocks Prohibited Area from median high water to low water mark

136° 41.348' E
36° 3.244' S

136° 41.782' E

136° 42.572' E

H852100 S950

RAZ-2

RAZ-2 is Flinders Chase Prohibited Area DCDB parcels as indicated

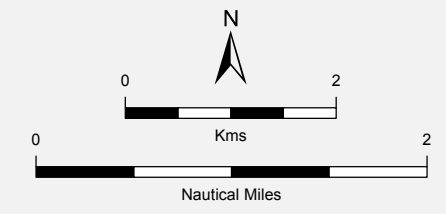
H852100 S951

SZ-3

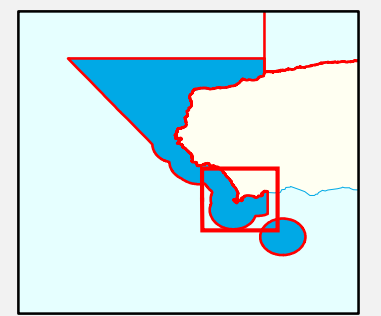
136° 41.348' E
36° 5.415' S

136° 42.572' E
36° 5.415' S

- Marine Park Zoning**
- Restricted Access Zone (Existing)
 - Sanctuary Zone
 - Habitat Protection Zone
- Topographic**
- Existing Reserves under other Acts
 - Marine Park Boundary
 - DCDB Parcel
 - Coastal Waters of the State
 - Coastline (median high water)
 - Sealed Road
 - Unsealed Road
 - Vehicular Track



Scale Bar is approximate only
THIS MAP IS INDICATIVE ONLY AND IS NOT INTENDED FOR NAVIGATIONAL PURPOSES



Produced by Marine Parks Project
Department for Environment and Water
GPO BOX 1047 Adelaide SA 5001
www.marineparks.sa.gov.au

Data Source Marine Parks, NPWSA, Topographic Data
Coastline (median high water) - DEW (dataset #2096, Topography - Coastline, last updated September 2016)
DCDB - DPTI
Coastal Waters of the State - Geoscience Australia (dataset #319, Australian Maritime Boundaries, last updated February 2006)
11 January 2022

Compiled Projection Datum Geographic Geocentric Datum of Australia, 1994

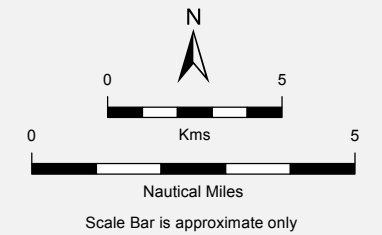
© Copyright Department for Environment and Water 2022. All Rights Reserved. All works and information displayed are subject to Copyright. For the reproduction or publication beyond that permitted by the Copyright Act 1968 (Cwth) written permission must be sought from the Department.

Although every effort has been made to ensure the accuracy of the information displayed, the Department, its agents, officers and employees make no representations, either express or implied, that the information displayed is accurate or fit for any purpose and expressly disclaims all liability for loss or damage arising from reliance upon the information displayed.

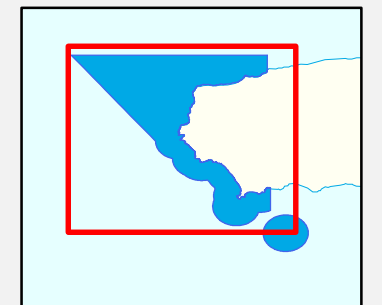
South Australian Marine Park Zoning

Boundary Definition Western Kangaroo Island Marine Park Map 04(A) Restricted Access Zone 1 Habitat Protection Zone 1

- Marine Park Zoning**
- █ Restricted Access Zone (Existing)
 - █ Sanctuary Zone
 - █ Habitat Protection Zone
- Topographic**
- Existing Reserves under other Acts
 - Marine Park Boundary
 - DCDB Parcel
 - Coastal Waters of the State
 - Coastline (median high water)
 - Sealed Road
 - Unsealed Road
 - Vehicular Track



THIS MAP IS INDICATIVE ONLY AND IS NOT INTENDED FOR NAVIGATIONAL PURPOSES



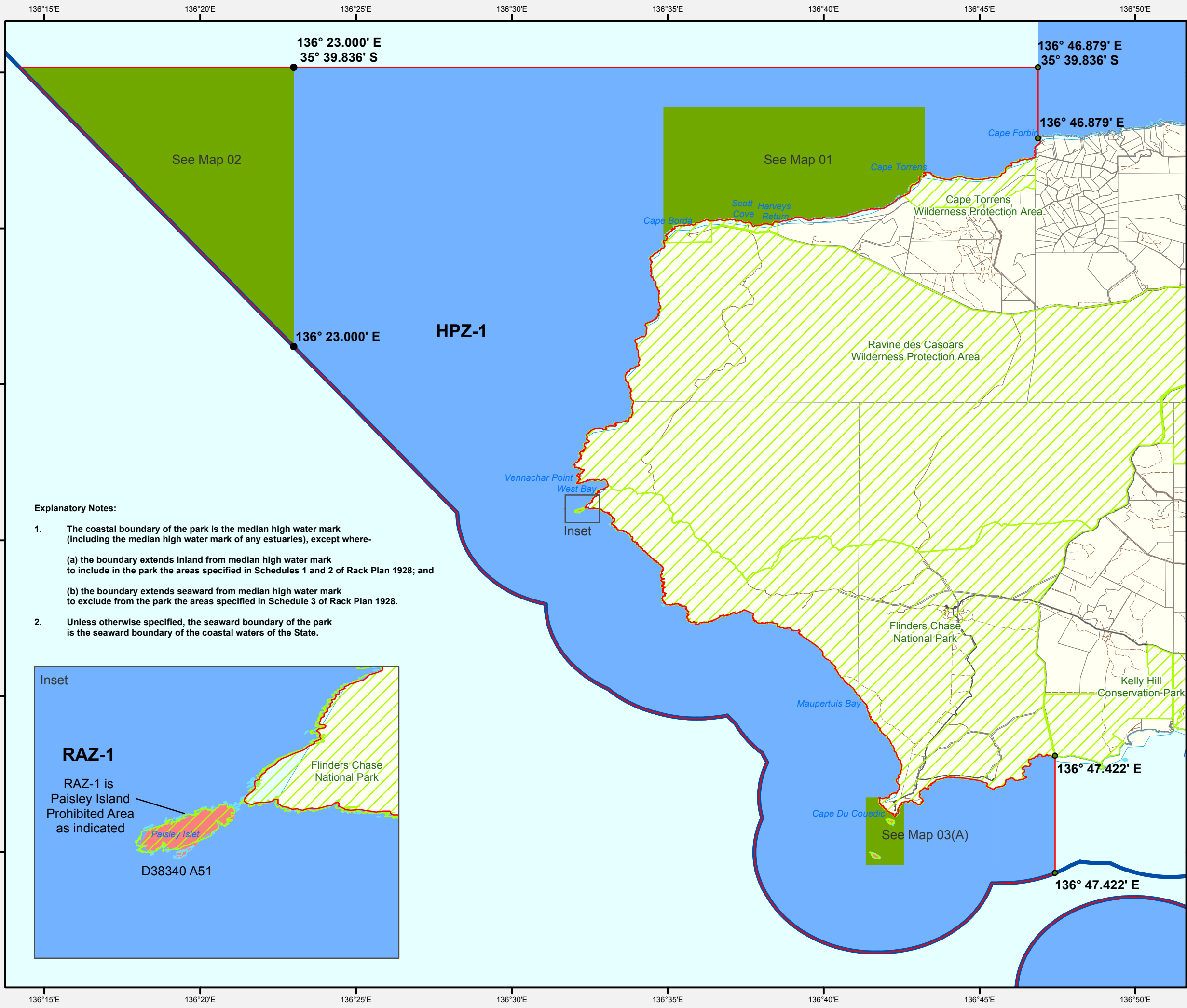
Produced by Marine Parks Project
Department for Environment and Water
GPO BOX 1047 Adelaide SA 5001
www.marineparks.sa.gov.au

Data Source Marine Parks, NPWSA, Topographic Data
Coastline (median high water) - DEW
(dataset #2096, Topography - Coastline, last updated September 2016)
DCDB - AGD
Coastal Waters of the State - Geoscience Australia
(dataset #319, Australian Maritime Boundaries, last updated February 2006)

Compiled Projection Datum
11 January 2022
Geographic
Geocentric Datum of Australia, 1994

© Copyright Department for Environment and Water 2022.
All Rights Reserved. All works and information displayed are subject to Copyright. For the reproduction or publication beyond that permitted by the Copyright Act 1968 (Cwth) written permission must be sought from the Department.

Although every effort has been made to ensure the accuracy of the information displayed, the Department, its agents, officers and employees make no representations, either express or implied, that the information displayed is accurate or fit for any purpose and expressly disclaims all liability for loss or damage arising from reliance upon the information displayed.



- Explanatory Notes:**
1. The coastal boundary of the park is the median high water mark (including the median high water mark of any estuaries), except where:
 - (a) the boundary extends inland from median high water mark to include in the park the areas specified in Schedules 1 and 2 of Rack Plan 1928; and
 - (b) the boundary extends seaward from median high water mark to exclude from the park the areas specified in Schedule 3 of Rack Plan 1928.
 2. Unless otherwise specified, the seaward boundary of the park is the seaward boundary of the coastal waters of the State.

