



Building futures together



The Alinytjara Wilurara Landscape Board's Landscape Plan 2021- 2026 was developed to include priorities stated in the Healthy Country Plans developed by the region's Co-management Boards, Advisory Committees and Communities.



Supporting skills development and local employment are considered key to the ongoing health of Country and culture.

With a network of employers in the region and partners with a common focus, AW aims to expand opportunities for Aboriginal employment.



Engaging community members in natural resources management supports and extends opportunities for economic development within regional communities.



Adelaide

Level 9, 81-91 Waymouth St
ADELAIDE SA 5000

GPO Box 1047
ADELAIDE 5001

Ceduna

50B McKenzie Street
CEDUNA

PO Box 569, CEDUNA 5690

Tel: 8463 4860

Email: aw.landscapeboard@sa.gov.au



Government
of South Australia

For **more information** about the Alinytjara Wilurara Landscape Board visit:

www.landscape.sa.gov.au/alinytjara-wilurara

AW LANDSCAPE
SOUTH AUSTRALIA
ALINYTJARA WILURARA

YOU CAN MAKE A DIFFERENCE

across north-west
South Australia

ALINYTJARA WILURARA
Landscape Board

Who we are..

The **Alinytjara Wilurara Landscape Board** is the only all-Aboriginal natural resource management board (out of 56) in Australia.

Established in 2005 we understand the significance of culture, family and Country to our people, and use our skills in governance and local knowledge to support a healthy environment in which all these aspects are respected.

The AW Landscape region covers more than 250,000 square kilometres, stretching from the Northern Territory and West Australian borders south to the Great Australian Bight. It encompasses the APY Lands and a number of sizable parks and reserves.

The board works together with community to manage the region's environment to achieve a balance between the collective need for resources and maintaining a healthy environment.



The board works closely with numerous strong partners with similar aspirations from across Australia and is the SA Government's primary natural resources management body.

MAKE A DIFFERENCE

through the

ALINYTJARA WILURARA Landscape Board

Who we are looking for

At the centre of our board's success is the relationship that our members have with their communities and their commitment to healthy Country. We are seeking nominations from Aboriginal leaders, men and women who are interested in taking our board into the future, representing the needs of their Country and their community as a member of a well-established, well-regarded and influential board.

Your opportunity...

As a member of the Alinytjara Wilurara Landscape Board you will have the opportunity to express the concerns of your community and to consider and plan the ways that they may be addressed.

With over 16 years experience effectively planning and delivering programs alongside a network of partners the board offers you, not just the opportunity to benefit your own community, but to help across the whole AW region, respecting culture, supporting economic growth and promoting future independent management.

As a member of the board you will also gain invaluable experience and further your skills enabling you to continue in the future in leadership roles.



"Working with a strong plan based on what is most important to our region's people means we are strong together." Parry Agius (Chair)

"I feel proud when I see Aboriginal people working together to make a difference." Debbie Hansen 2021



"Representing my Country and our people is an honour I take seriously." Mick Haynes 2021



"Seeing on-ground work happening and knowing it's because of our board's support is a good feeling." Maureen Smart 2020



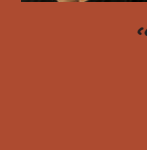
"Working with strong partners means plans for healthy Country become reality." Peter Miller 2021 (NAIDOC 2022 Male Elder of the Year)



"Being part of a team that supports healthy Country and strong Culture is rewarding." Kristy Richards 2021



"I've learnt so much working with leaders from across the region." Julie O'Toole 2021



"The board provides a strong voice for caring for our Country." Sally Scales 2021



Repopulating threatened species: Releasing captive-bred warru onto Country

