



From the Ground Up

Supporting regenerative grazing practices



From the Ground Up

Project Overview

From the Ground Up is building on the success of the SAAL Board's Building Pastoral Sustainability Project, and aims to support regenerative grazing practices in South Australia's rangelands to build drought resilience. Five demonstration sites across the SA Arid Lands region have been established, with a focus on soil health and grazing land management practices.

The project is a welcome addition to the region's land management programs, with growing interest from industry leaders for information on soil health and regenerative grazing practices in the rangelands. The project engages with grazing managers to develop knowledge and skills in drought resilient grazing management practices.

Maintaining soil health and ground cover during dry periods is integral to maintaining profitable and resilient businesses. Regenerative grazing looks to manage livestock movements and behaviour to allow pasture to be rested during a growing season. Rest-based grazing practices are well documented and monitored in higher rainfall regions, but not well known in the rangelands. This project looks to assess and quantify the benefits of rest-based grazing to soil and vegetation health and livestock productivity, under different management practices on working pastoral properties.

This will be done through:

- Monitoring feed from space;
- Using AusPlot to gain baseline vegetation data;
- Assessing soil nutrients and properties influencing pasture growth;
- Implementing Ceres satellite tracking tags to understand grazing animals behaviour;
- Studying the influence of grazing practices on soil carbon and organic matter in arid landscapes.

From the Ground Up is funded by the Future Drought Fund and will focus on three main areas:

Demonstration trial sites

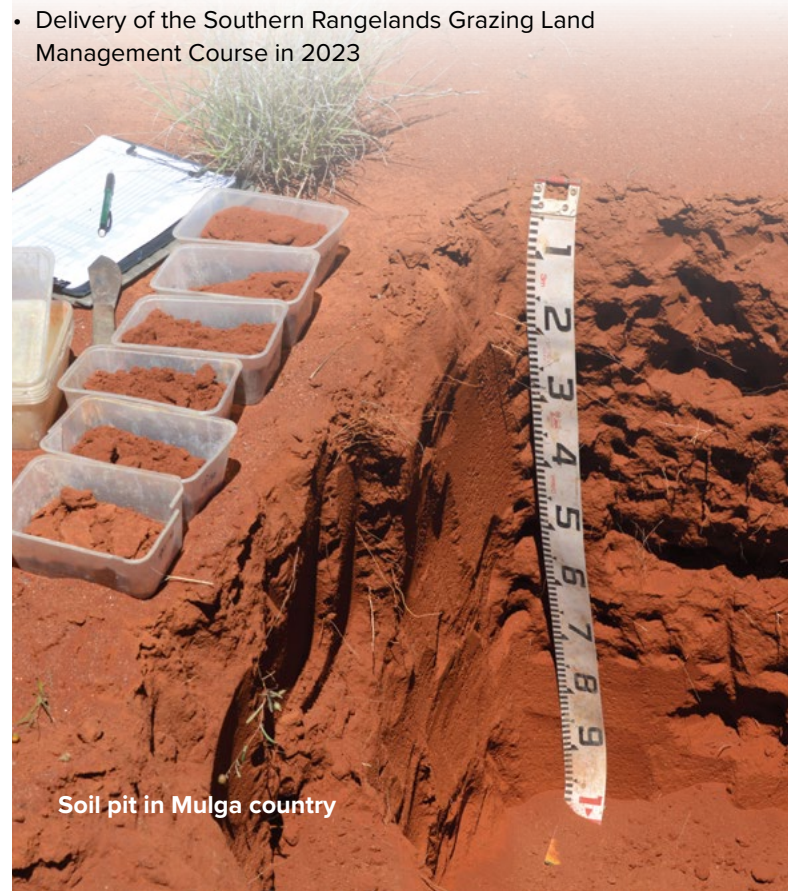
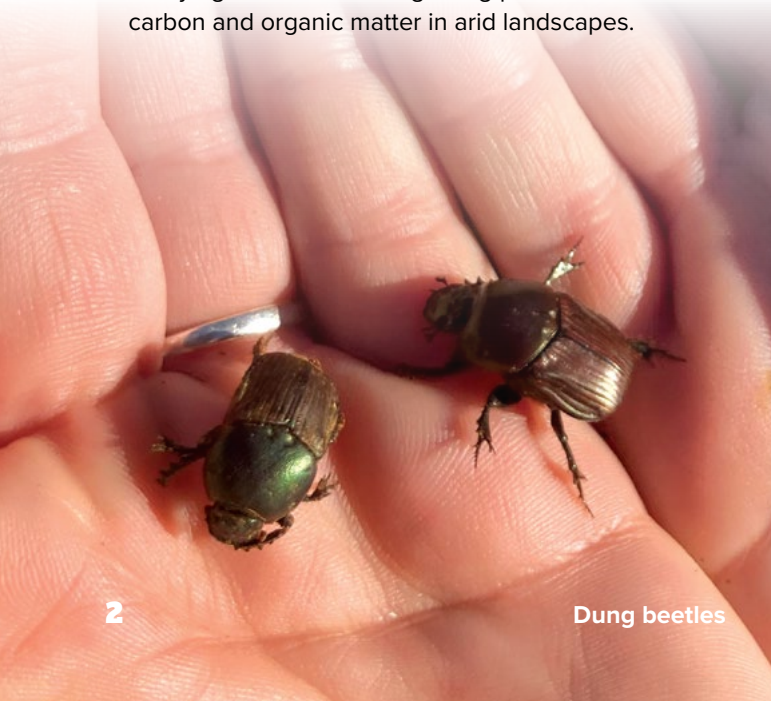
- Soil health monitoring
- Measuring changes in ground cover and vegetation response to rest-based grazing practices
- Exploring the use of new technologies to manage and understand livestock behaviour like geo-locator tags and forage budgeting from space

Field days and peer-to-peer learning

- Visiting properties implementing grazing management techniques and technology to improve ground cover and soil health
- Regular guest speakers and information sharing with the Southern Rangelands Regenerative Grazing Group
- Interstate bus tour

On-ground training

- Delivery of the Southern Rangelands Grazing Land Management Course in 2023





From the Ground Up will support leaders in the grazing community to discuss and trial new innovative ideas and methods relating to grazing management in pastoral country.

Opportunities to get involved



Visit

Stickybeak days – a series of property visits and filming of demonstration site results will be held around the region to showcase the work happening in the zone.



Learn

Southern Rangelands Grazing Land Management Course (SRGLM) – A one-day course open to all SA Arid Lands stakeholders with an investment in grazing land management. The course will be offered at 11 different locations throughout the region, in the second half of 2023.



Explore

Interstate Bus tour – Travel to visit regenerative grazing projects across similar rangeland regions interstate. A one-week bus trip is planned for early 2024 with participants selected via an expression of interest process in mid-2023.



Share

Southern Rangelands Regenerative Grazing Group – meets online every two months to listen to speakers and discuss grazing management ideas and methods suited to the local climate and region. New members are welcome, email andrea.tschirner@sa.gov.au if you would like to be involved.

HEALTHY SOILS

Soils are the foundation for all ecology and grazing production systems. Soils across the rangelands are incredibly diverse, reflecting the variability in climatic conditions, the underlying geology and the land management employed. Healthy rangeland soils support resilient systems. The resilience of a system describes its capacity to re-organise and respond after local disturbance, like extended dry periods. A significant factor influencing soil health in the pastoral region is ground cover and organic carbon content; this can be managed with carefully planned grazing management.

REST-BASED GRAZING

Resting pastures during a growth season occurs when soil moisture is available for leaf growth. Resting provides soils and vegetation an opportunity to recover from foliage and root mass depletion, by allowing healthy growth of tillers to enable replenishment of soil carbon and energy back into pasture root systems. This is especially important for managing and maintaining a suite of palatable and productive species in preparation for dry times or future grazing events. Good grazing management can improve soil structure and water holding capacity.





BUILDING PASTORAL SUSTAINABILITY

Adaptation • Innovation • Diversification

For more information contact:

Andrea Tschirner
andrea.tschirner@sa.gov.au
0438 720 469

Cherie Gerlach
Cherie.Gerlach@sa.gov.au
0427 413 345

www.landscape.sa.gov.au/saal

This project is supported by the SA Arid Lands Landscape Board, through funding from the Australian Government's Future Drought Fund.

