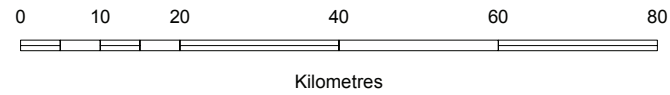


South Australian Arid Lands NRM Region

NORTH EAST

Natural Resources Management Group

- | | | | |
|--|-----------------------------------|--|--------------------|
| | Pastoral Station Boundary | | Dog Fence |
| | Conservation and National Parks | | Major Road |
| | Aboriginal Land | | Minor Road / Track |
| | North East NRM Group | | Railway |
| | SA Arid Lands NRM Region Boundary | | Cadastral Boundary |
| | | | Watercourse |
| | | | Mainly Dry Lake |

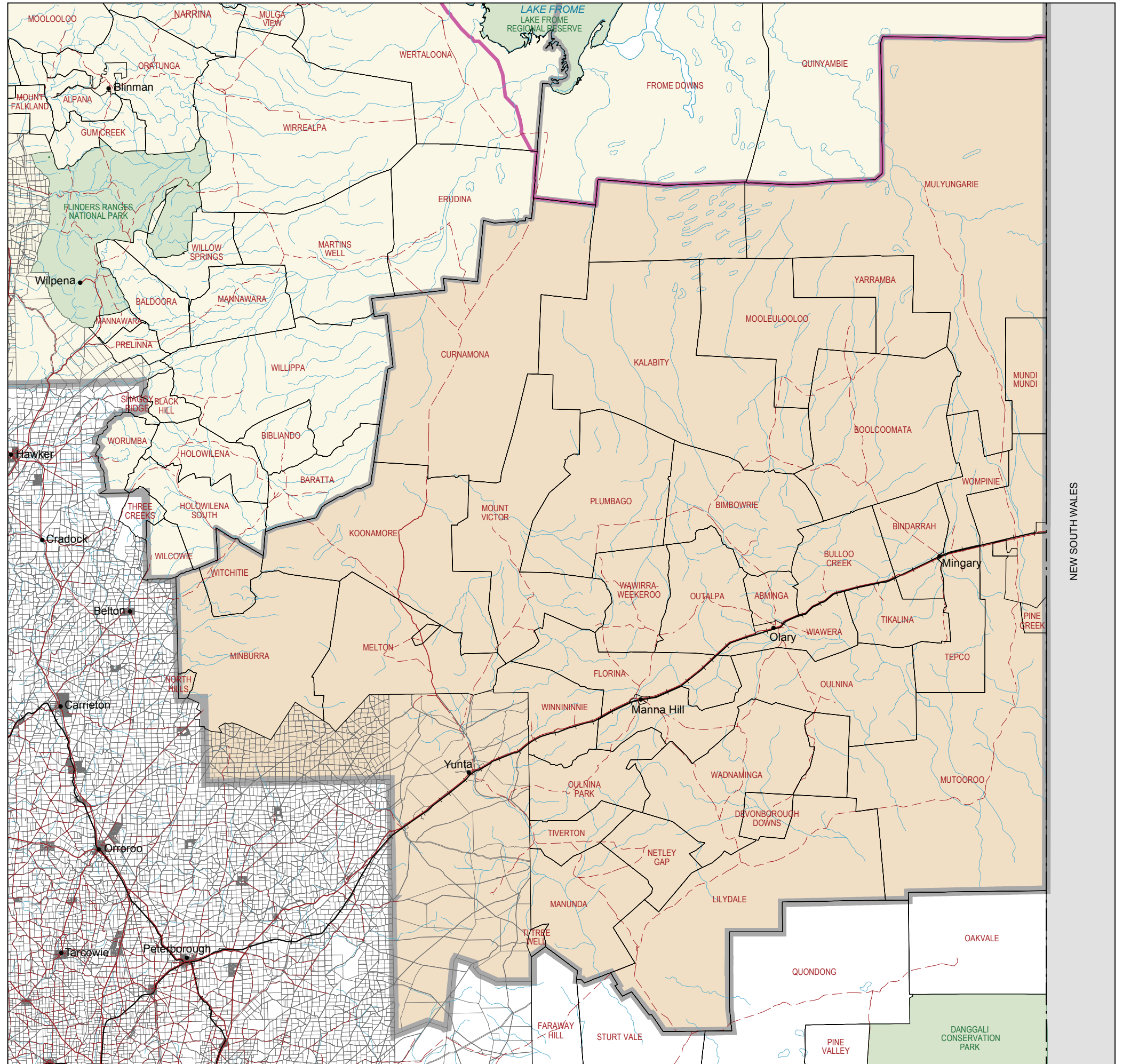


Pastoral detail correct to November 2005

Pastoral Station boundaries shown are based on fence lines. It is not intended to show legal boundaries of pastoral leases. Fence lines are often significantly at variance with pastoral lease boundaries. Note that NPWSA boundaries have also been based on fence lines, rather than cadastre.

DISCLAIMER: The Department of Water, Land and Biodiversity Conservation, its employees and servants do not warrant or make any representation regarding the use, or results of use of the information contained herein as to its correctness, accuracy, currency or otherwise. The Department of Water, Land and Biodiversity Conservation, its employees and servants expressly disclaim all liability or responsibility to any person using the information or advice contained herein.

Government of South Australia, through the Department of Water, Land and Biodiversity Conservation 2006
This work is copyright. Apart from any use as permitted under the Copyright Act 1968 (Cwth), no part may be reproduced by any process without prior written permission from the Department of Water, Land and Biodiversity Conservation. Requests and inquiries concerning reproduction and rights should be addressed to the Chief Executive, Department of Water, Land and Biodiversity Conservation, GPO Box 2834, Adelaide SA 5001.



Government of South Australia
South Australian Arid Lands Natural Resources Management Board

Produced by: Resource Information, Department of Water, Land and Biodiversity Conservation.
Data source: Pastoral lease names and boundaries supplied by Pastoral Program, DWLBC, Cadastre and Reserves supplied by the Department for Environment and Heritage. Waterbodies, Roads and Place names supplied by Geoscience Australia.
Projection: MGA Zone 54.
Datum: Geocentric Datum of Australia, 1994.