

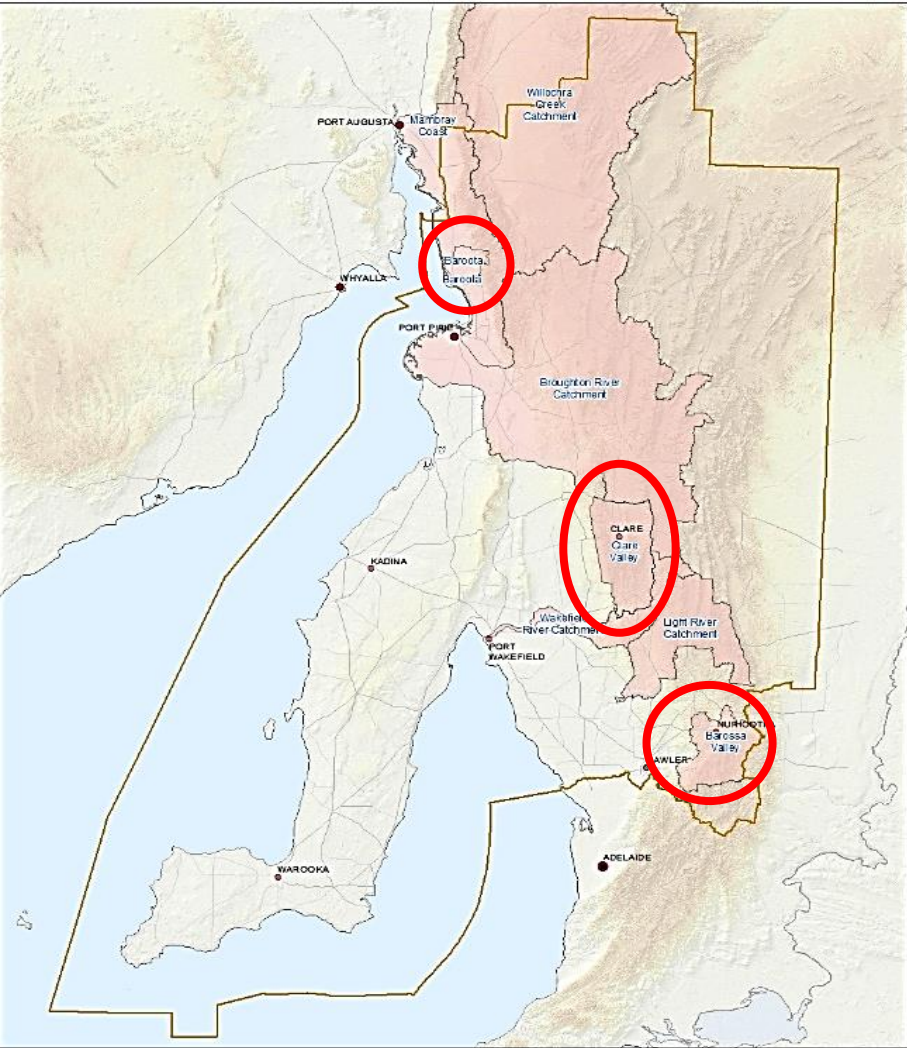
# Water Planning in the Northern and Yorke region

Jennifer Munro, Planning Officer

<https://www.landscape.sa.gov.au/ny/home>

# Northern and Yorke

# Prescribed Water Resources Areas

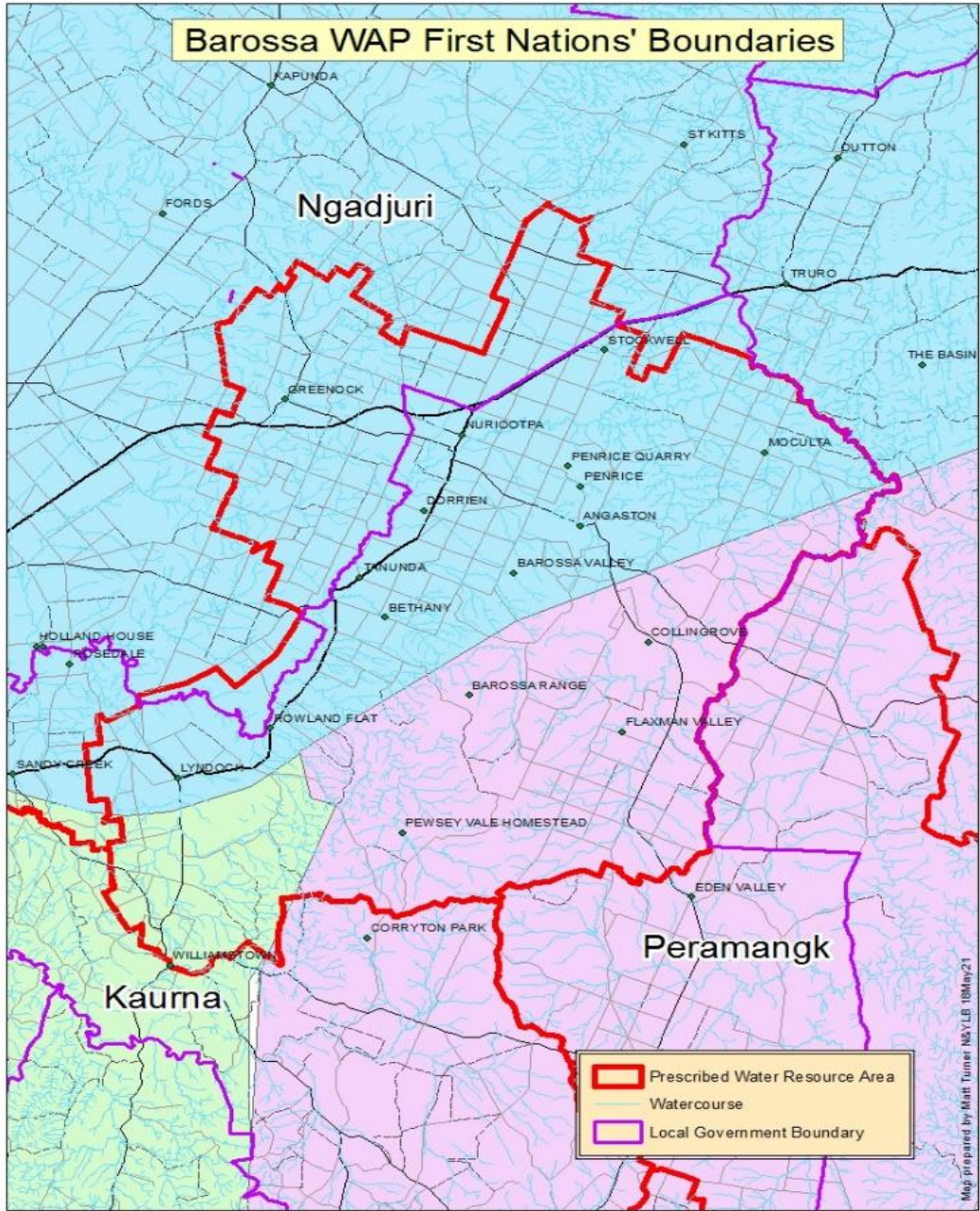


# Barossa Prescribed Water Resources Area



<https://www.landscape.sa.gov.au/ny/water/water-allocation-plans/barossa-wap>

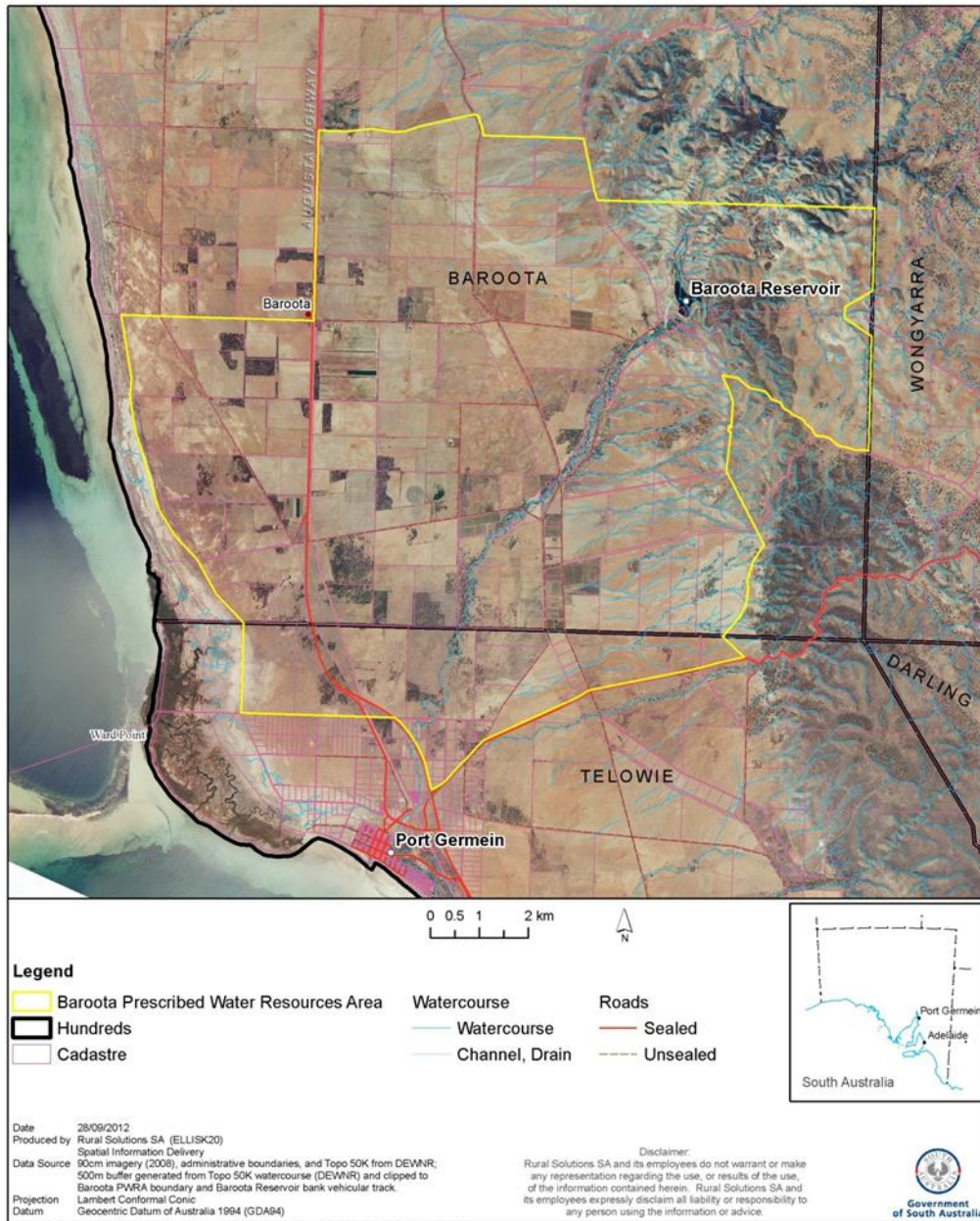




# Barossa PWRA First Nations

# Baroota Prescribed Water Resources Area

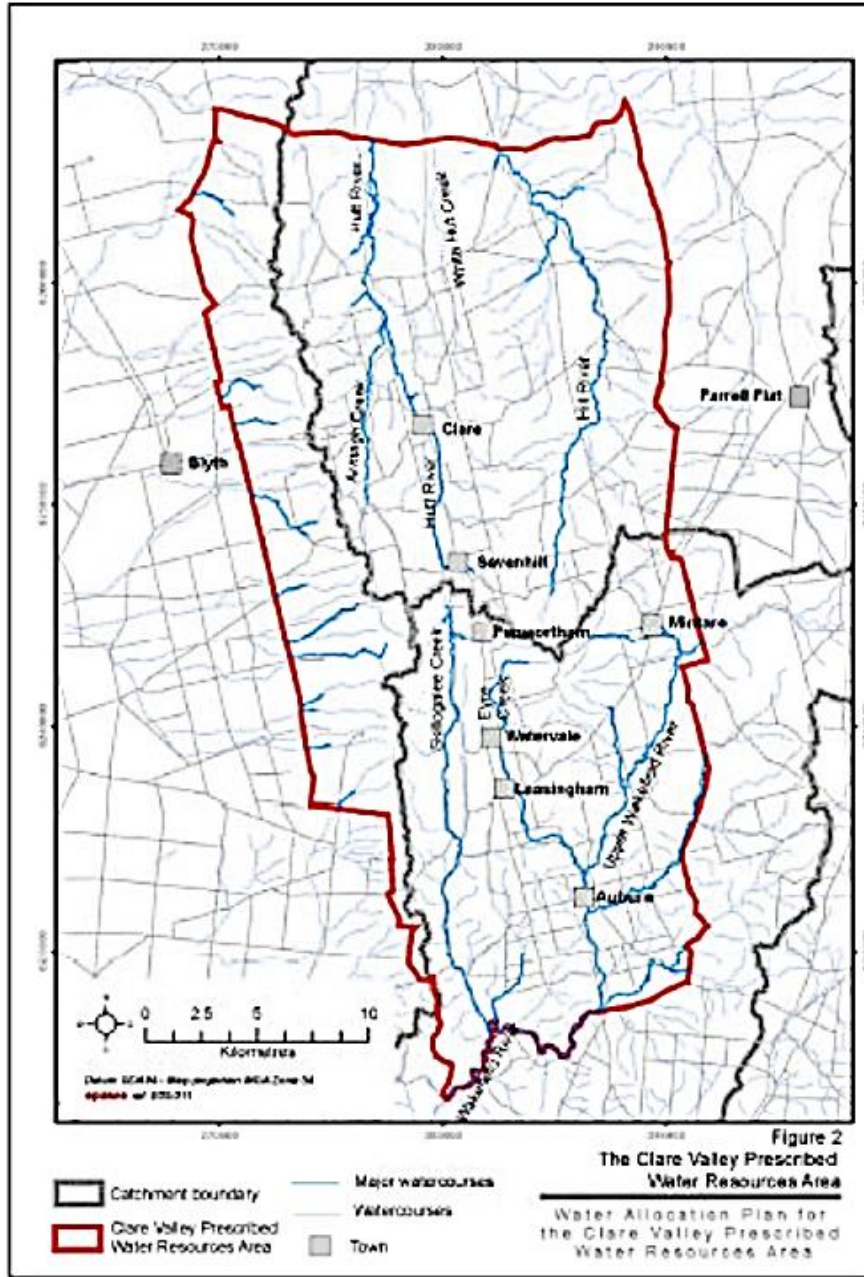
<https://www.landscape.sa.gov.au/ny/water/water-allocation-plans/baroota-wap>

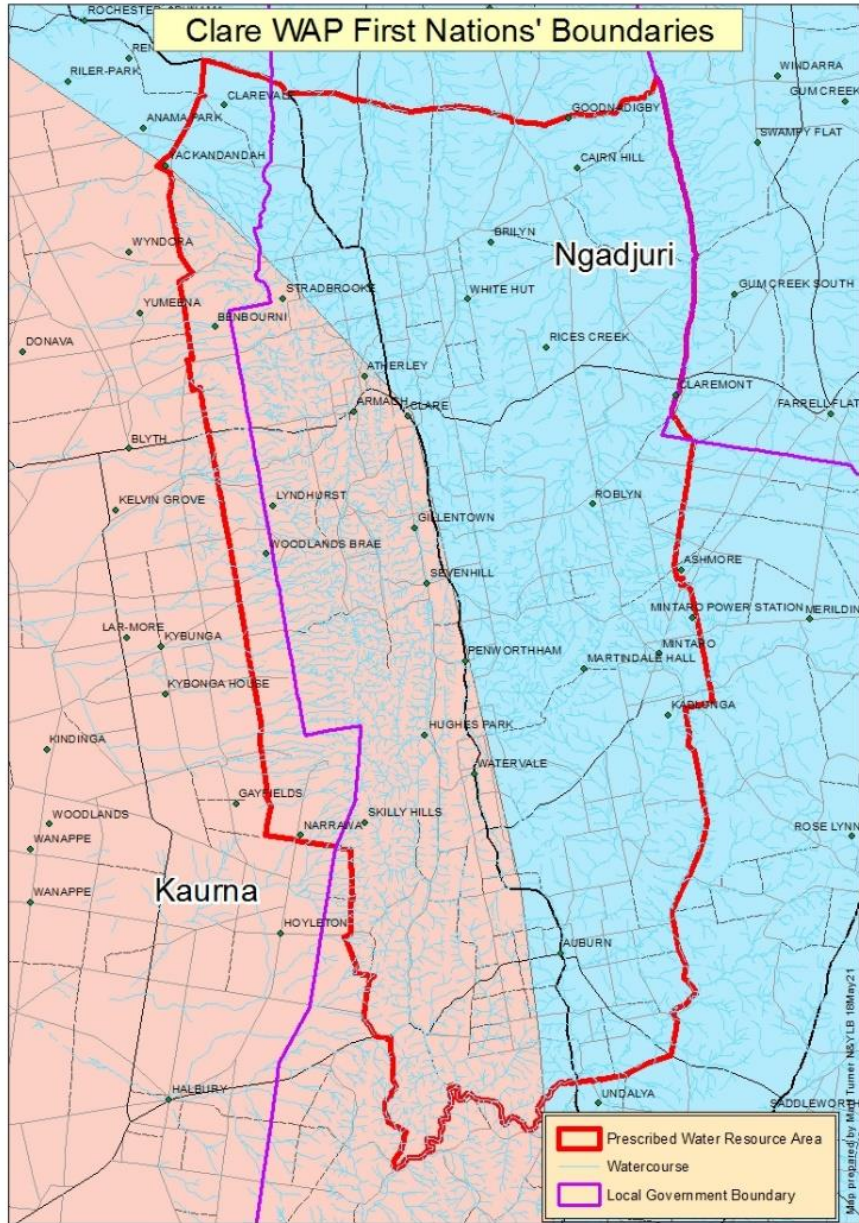




# Clare Valley Prescribed Water Resources Area

<https://www.landscape.sa.gov.au/ny/water/water-allocation-plans/clare-valley-wap>





# Clare Valley PWRA First Nations



# Water Allocation Plans current status

- Barossa 2009 – under review
- Baroota – new being developed
- Clare Valley 2009 – future review





# Water Allocation Plans

- Environmental Water Requirements & Environmental Water Provisions
- Capacity of the water resources
- Allocations & transfer criteria
- Water Affecting Activities
- Monitoring





# Aboriginal cultural objectives

Aboriginal nations have developed cultural objectives through the Water Planning process and by participating in the Plan's engagement process.

Marne Saunders WAP 2019

<https://www.landscape.sa.gov.au/mr/water/water-allocation-plans/marne-saunders>





# Aboriginal cultural objectives

- water entitlements
- hydrological/ecological conditions
- spiritual, cultural, environmental, social and economic needs
- monitoring and evaluation
- build community capacity
- commercial opportunities
- awareness and respect for values and perspectives
- continued and meaningful engagement







## **Monitoring & Evaluation Plans**

- **Water resource capacity and trends**
- **Ecological health and condition**
- **Allocation method and approach**
- **Policies and principles**
- **Climate variability**
- **Cultural objectives**



# Community monitoring of pools and watercourses in the Clare Valley

- register Expression of Interest to participate
- online project site on Atlas of Living Australia website at:  
<https://biocollect.ala.org.au/acsa/project/index/bf63c385-ddf8-4d60-98f5-a906c6eedf4a>





A photograph of an adult emu and two chicks in a coastal landscape. The adult emu is on the right, facing left, with two smaller chicks to its left. They are standing on a gravelly path. The background features a body of water, a sandy beach, and a hillside with sparse vegetation. A dark teal rectangular box is overlaid on the right side of the image, containing the text "Thank you" in white.

**Thank you**





**Government of South Australia**

---

Northern and Yorke  
Landscape Board