

Murraylands and Riverland Landscape Board

# Performance Report Highlights

Quarter 3 | January - March 2025

*Outcomes aligned with the 2024-25 annual business plan investment and priorities*





## From the General Manager

I am pleased to present the Murraylands and Riverland Landscape Board Performance Report Highlights for the third quarter of 2024-25.

This report summarises the performance and activities over the past 3 months and tracks our progress towards delivering the investment and priorities as outlined in the Murraylands and Riverland Landscape Board Annual Business Plan.

It provides the regular review of programs, services and projects and also highlights achievements, key partnerships and other related matters that have occurred during the period.

This report is one of the organisation's key reporting tools used to deliver performance related information to landscape board members, the organisation and the wider community.

I hope that you will find its content valuable and informative.

**Andrew Meddle**  
**General Manager**

### Acknowledgement of Country

The Murraylands and Riverland Landscape Board acknowledges Aboriginal people as the First Peoples and Nations of the lands and water that we live and work upon, and we pay our respects to their Elders past, present and emerging. We acknowledge and respect the deep spiritual connection and the relationship that Aboriginal and Torres Strait Islander.

# QUARTER AT A GLANCE



*Working in partnership with regional communities to deliver a healthy and resilient landscape*



**517,840 ha** benefitted from **pest animal control**



**165 land managers** involved in coordinated pest animal baiting



**3,258 ha** benefitted from **pest weed control**



**4 on-ground trial sites** have been established or maintain



**13,000 ha** of wetlands and surrounding floodplains managed



**305 communication materials** published



**Area surveyed**  
**9,633 ha** for land management  
**5,110 ha** for water management  
**3,176 ha** for threatened species recovery



**6,736 followers** on social media



**12** Radio, TV and newspaper **interviews** conducted



Engaging with **1239 people** at **66 events**



**110 schools** supported and **30 schools** actively involved in the education program



**846 interactions** with **landholders and community** members to provide support



**3 WAA** permits received and processed



**24 referrals** responded to by landscape board staff



**5 Compliance** issues investigated

# QUARTER AT A GLANCE



In quarter 3 of 2024-25, the following progress was made, and program delivery is predominantly **on track** for the financial year.

Strategic Priority	Annual Business Plan Programs	Program Strategies
<b>Sustainable agricultural and pastoral landscapes</b>	Sustainable agriculture Carbon farming outreach program Pest plant and animal management	<ul style="list-style-type: none"> <li>On track (8)</li> <li>Behind schedule (1)</li> <li>Completed (1)</li> </ul>
<b>Sustainable water use</b>	Sustainable irrigation Water planning and management Water allocation planning Pest plant and animal management	<ul style="list-style-type: none"> <li>On track (16)</li> <li>Postponed (1)</li> </ul>
<b>Healthy rivers, lakes and wetlands</b>	Wetlands and floodplain restoration Pest plant and animal management	<ul style="list-style-type: none"> <li>On track (9)</li> </ul>
<b>Healthy natural landscapes</b>	Landscape scale restoration Mallee birds TEC Restoring iron grass grasslands Pest plant and animal management	<ul style="list-style-type: none"> <li>On track (19)</li> <li>Completed (3)</li> </ul>
<b>People at the heart of landscape management</b>	Grassroots grants Education program First Nations partnership program Community partnerships and engagement Citizen science	<ul style="list-style-type: none"> <li>On track (16)</li> <li>Complete (3)</li> <li>Behind Schedule (1)</li> </ul>
<b>Foundational programs</b>	Board leadership and governance Planning and evaluation Customer and business services Communications	<ul style="list-style-type: none"> <li>On track (31)</li> <li>Behind schedule (1)</li> </ul>



# QUARTER HIGHLIGHTS



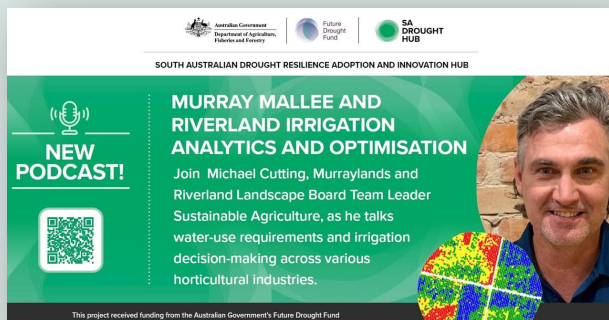
## Sustainable agricultural and pastoral landscapes



- In partnership with the Murraylands and Riverland Landscape Board, the [Women Together Learning \(WoTL\)](#), hosted a bus tour to Merbein for women in the almond industry to explore *whole orchard recycling (WOR)*—a sustainable practice where old trees are ground into wood chips and incorporated into the soil.
- A very successful workshop on soil nutrition for drought resilience was delivered by Joel Williams in March 2025 at Brinkley, attracting over 40 attendees. The event was especially timely, given the ongoing extremely dry conditions affecting the region.
- Murraylands district staff collaborated with the Coorong District council and Coorong Tatiara LAP to develop an Aleppo pine tree removal and biochar trial. The trial will remove Aleppo pines and transform them into biochar to be used in a follow-up demonstration highlighting a circular economy in action.
- An extensive pindone rabbit baiting program was rolled out at The Bend motorsport park, delivering 165 kg pindone over 5 feeds. The program combined with roadside 1080 control, marks a good start in tackling rabbit population in the Tailern bend area.



## Sustainable water use



- This quarter, a new project was initiated with Waterfind to introduce a water budgeting and management application (WMA) that will help agricultural users manage bulk water usage.
- A podcast was produced in partnership with Ag Communicators and the SA Drought Hub to showcase the Mallee and Riverland irrigation analytics project that has been funded through the SA Drought Hub.

- A new education and social media campaign on water affecting activities was launch this quarter, featuring this blog story: ['Dams and Water Management: What Every Landholder Should Know'](#)
- First Nations relationships are beginning to gather steam regarding Marne Saunders Water planning. Mid Murray and Mallee Aboriginal Corporation and Peramangk Aboriginal Corporation (PAC) have been engaged, with on county visits to various sites in the Marne Saunders catchment planned for quarter 4 – April, May and June.
- A Peake, Roby and Sherlock stock and domestic (SD) water security analysis is underway to understand the role that SD water use has on aquifer drawdown when combined with metered use by licensees.





# QUARTER HIGHLIGHTS



## Healthy rivers, lakes and wetlands

- The rollout of the largest Commonwealth Environmental Water Holder (CEWH) environmental water pumping program ever implemented by the landscape board's Wetlands program (16GL of water to 54 sites) has progressed smoothly. All pumping operations are running to schedule, with the final program predicted to be completed within estimated timelines and budget.
- Translocation of southern purple spotted gudgeon and Valisneria (key aquatic habitat plants) from Greenlands Drive to dams at Monarto Safari Park to increase habitat/structure within dams for these native species.
- 250 'juvenile' Murray crayfish -and their mother - were successfully released into South Australia's River Murray in February 2025. This forms part of the captive breeding trial at Nature Glenelg Trust's Victor Harbor aquaculture facility and marks the first time this threatened species has been captively reared for wild site reintroduction in SA. Currently a total of 450 individuals have been released in 2024-25.



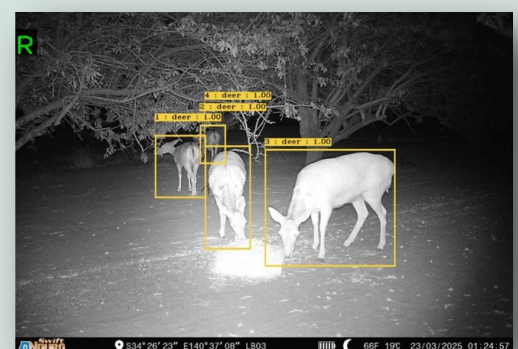
## Healthy natural landscapes



- In March 2025, the Living Landscape Alliance (LLA) met at Calperum Station for 2 days of valuable knowledge sharing, reflecting on achievements, tackling current challenges and planning future actions to support conservation and restoration outcomes on the South Olary Plain.
- In January 2025, 2 conservation detection dogs began training to detect the scent of Murray-Darling carpet pythons. The dogs, Oakley and Rex, from Skylos Ecology have been selected as candidates for this pilot project.
- In March 2025, Australia's experts on mallee birds and/or mallee ecosystems converged for a 2-day Safeguarding Mallee Birds workshop at Murray Bridge, delivered by conservation scientists from La Trobe University.



- The native vegetation ecologist secured an additional \$56,000 from the Native Vegetation Heritage Agreement Grant program for the conservation and enhancement of biodiversity on five heritage agreement parcels.
- The Loxton North feral deer project continues to gain interest and participation, with 17 new landholders joining in the quarter. The habits of the deer are becoming easier to track, using 8 eVorta cameras across the project area. An additional benefit of the camera data is the ability to engage with landholders, notifying them of other pest animals such as cats and foxes.





# QUARTER HIGHLIGHTS



## People at the heart of landscape management

- The latest Ngarrindjeri Landscape Priority Fund [Update](#) has been released showcasing a range of Ngarrindjeri-led initiatives being delivered with a broad range of partners across three landscape regions.
- River Murray Youth Council recruitment was a success with 19 members registered, including 8 new students joining the program.
- More than 550 students were engaged in education sessions and excursions delivered by the Education team in term 1. Students learned about soil microbes, turtles, macroinvertebrates, water, wetlands and Caring for Country
- A webinar was held to celebrate World Frog Day in March 2025 and is now available to watch on the landscape board [YouTube](#) channel.



- The Precious Plants for Precious People program received over 45 registrations in just one week! In collaboration with the Landscape Ecology team and Forests of Hope, this year is shaping up to be the biggest yet—with classroom sessions, Mother's Day plant gifts, and in-school planting days planned for Term 2.
- The first Climate Change Yarning Circle has been achieved with the River Murray and Mallee Aboriginal Corporation and the SA Drought Hub in Berri. These community events are a great opportunity to educate the community about climate change, explore likely impacts on cultural values, and discuss what actions may be needed.



- A frog walk and talk held at Banrock in February 2025 to mark the beginning of the autumn frog census was well attended. Participants learned about local frogs and toured the wetlands listening for frogs calling.



# QUARTER HIGHLIGHTS



## Foundational programs



- The Planning and MERI team began to roll out workshops for the Regional Plan implementation evaluation to assess the landscape board's performance in delivering the priorities and focus areas outlined in the Regional Landscape Plan (2021-2026).
- A new organisational structure came into effect as a part of the Future Organisation initiative, enabling improved delivery of the landscape board's key priorities, response to community needs and to facilitate ongoing organisational improvement.
- Round 6 Grassroots Grant call closed on 30 March 2025, with 64 applications received.



- The Communications team collaborated with Green Adelaide and the Citizen Science team to develop a media kit and update images to promote the FrogWatch SA Seasonal Census.
- New Dob in a Deer roadside signs were developed for placement around Loxton North, encouraging locals to report deer sightings.



- A successful campaign, promoting a 20% discount on bait products and free bait layer hire, was implemented to help landholders manage rabbit numbers during a tough season. The campaign aimed to ensure rabbit control remained accessible—even during difficult times.



# FINANCIAL PERFORMANCE

The following summary of financial performance includes total expenditure by priorities and funding source, in addition to expenditure through the disbursement of grant funds. More detail regarding revenue and planned expenditure is available in the [2024-25 Annual Business Plan](#).

Table 1. Quarter 2 expenditure by priority by funding source.

Funding source	Annual revenue	Expenditure by priority						Total expenditure YTD
		Sustainable agricultural and pastoral landscapes	Sustainable water Use	Healthy rivers, lakes and wetlands	Healthy natural landscapes	People at the heart of landscape management	Foundational programs	
Levy	13,514,622	1,016,193	1,787,959	892,131	694,111	1,678,771	1,641,451	7,710,611
Commonwealth	4,450,677	214,972	234,133	760,341	355,903	740,052	76,221	2,381,622
Other SA Govt Agencies	2,158,606	189,786	337,017	505,658	47,572	114,430	2,168	1,196,631
Other**	5,195,516	76,809	91,745	20,682	19,156	43,701	58,863	310,956
<b>Total</b>	<b>25,319,421</b>	<b>1,497,760</b>	<b>2,450,849</b>	<b>2,178,813</b>	<b>1,116,742</b>	<b>2,576,953</b>	<b>1,778,703</b>	<b>11,599,819</b>

\* The budget and annual revenue in this table may differ to the Business Plan due to additional income being received or carry-over funds.

\*\* Other includes \$4.553 million in working capital received due to the delay in raising water levies. This will be returned to the Landscape Administration fund prior to 30 June 2025.

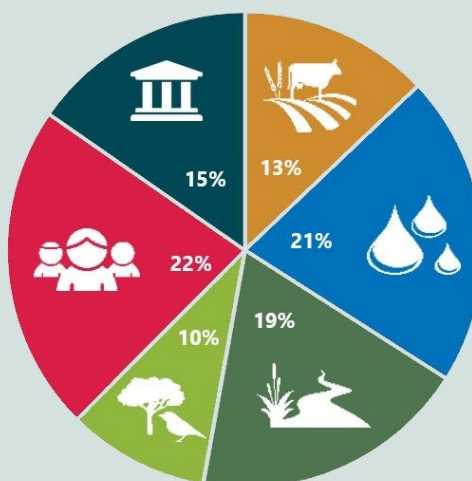


Figure 1. Percentage of expenditure for the quarter across priorities and foundational support.

The landscape board provides multiple opportunities for landholders and groups to apply for grants to undertake works that to contribute to the implementation of the Regional Landscape Plan. Table 2 and Figure 2 below provide information about the distribution of grant funds into our community.

Table 2. Grants disbursed by recipient category.

Category	Grants disbursed
Landholders	566,701
Volunteer Groups and NGOs	235,610
First Nations	358,132
Local government	10,400
State Government	18,750
Schools	14,987
Other	32,587

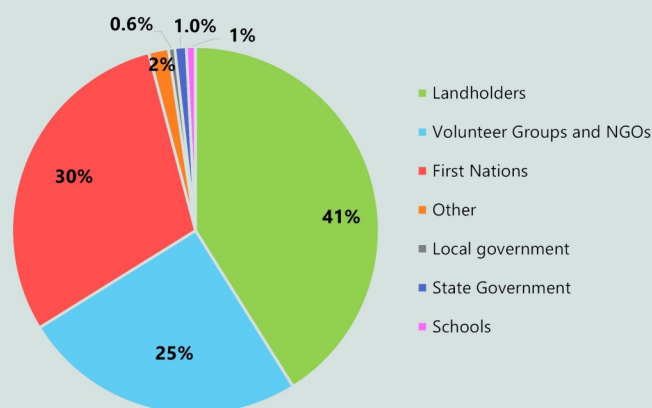


Figure 2. Percentage of grants disbursed by recipient category.

[View the full report here](#)

## More information

[landscape.sa.gov.au/mr](http://landscape.sa.gov.au/mr)

### Murraylands and Riverland Landscape Board Offices

Berri  
28 Vaughan Terrace  
Berri SA 5343  
Phone: 08 8580 1800

Murray Bridge  
Unit 5-6, Level 1 Sturt Centre  
2 Sturt Reserve Road  
Murray Bridge SA 5253  
Phone: 08 8532 9100



Creative Commons Attribution 4.0 Licence.  
© Crown in right of the State of South Australia,  
Murraylands and Riverland Landscape Board.



**Government of South Australia**

Murraylands and Riverland  
Landscape Board



Creative Commons Attribution 4.0 Licence.  
© Crown in right of the State of South Australia,  
Murraylands and Riverland Landscape Board.



**Government of South Australia**

Murraylands and Riverland  
Landscape Board