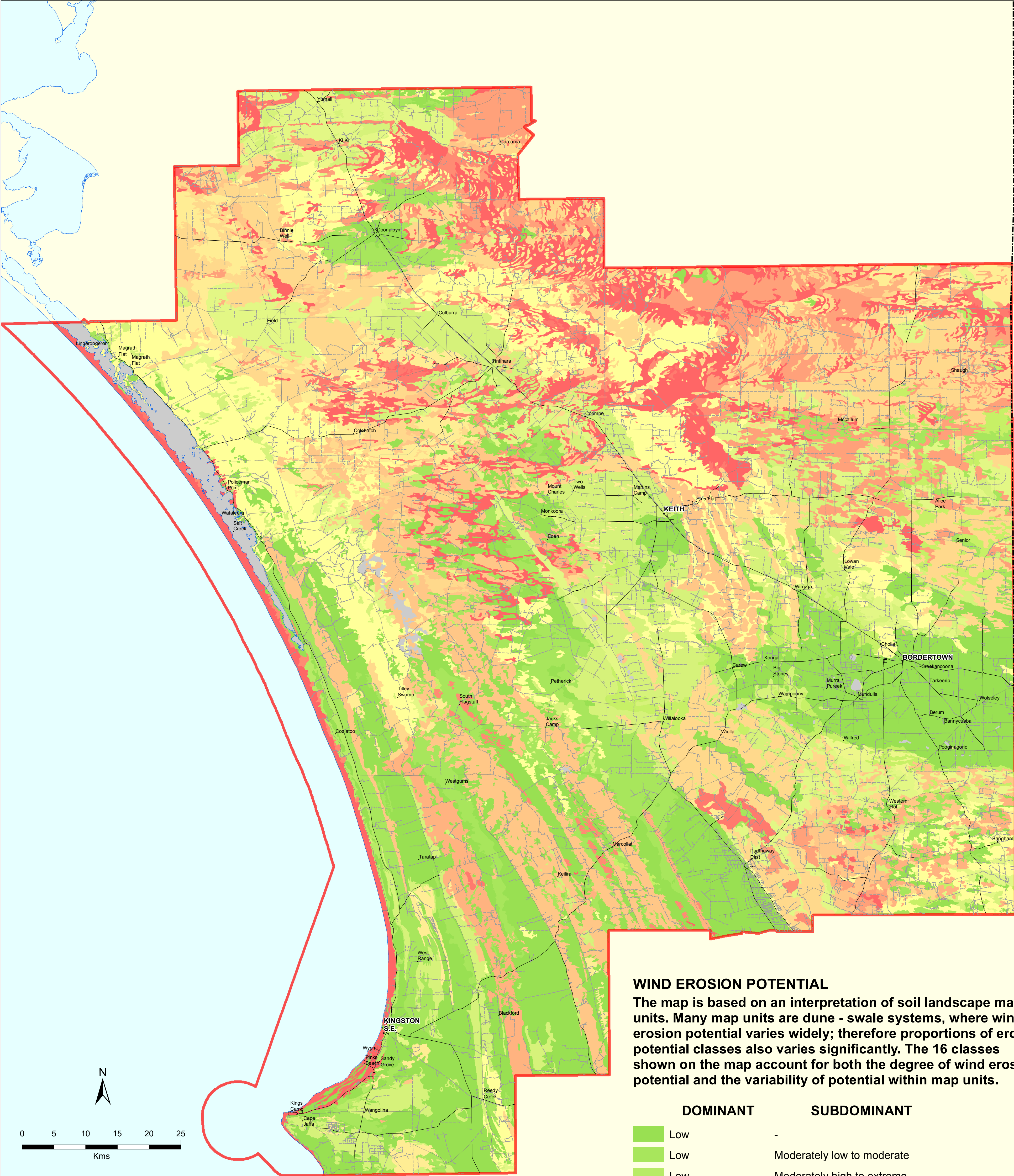


USE Wind Erosion Potential



WIND EROSION POTENTIAL
The map is based on an interpretation of soil landscape map units. Many map units are dune - swale systems, where wind erosion potential varies widely; therefore proportions of erosion potential classes also varies significantly. The 16 classes shown on the map account for both the degree of wind erosion potential and the variability of potential within map units.

DOMINANT		SUBDOMINANT	
	Low	-	
	Low	Moderately low to moderate	
	Low	Moderately high to extreme	
	Moderately low	Low	
	Moderately low	-	
	Moderately low	Moderate	
	Moderately low	Moderately high to extreme	
	Moderate	Low to moderately low	
	Moderate	-	
	Moderate	Moderately high to extreme	
	Moderately high	Low to moderate	
	Moderately high	-	
	Moderately high	High to extreme	
	High to extreme	Low to moderately low	
	High to extreme	Moderate to moderately high	
	High to extreme	-	
	Not applicable		

Produced by Regional GIS Information Officer
Department for Environment, Water and Natural Resources
Mt Gambier
www.environment.sa.gov.au
Data Source DEWNR SDE
Compiled 25 May, 2015
Projection Lambert Conformal Conic
Datum Geocentric Datum of Australia, 1994

© Copyright Department of Environment, Water and Natural Resources 2015.
All Rights Reserved. All works and information displayed are subject to Copyright. For the reproduction or publication beyond that permitted by the Copyright Act 1968 (Cwth) written permission must be sought from the Department.
Although every effort has been made to ensure the accuracy of the information displayed, the Department, its agents, officers and employees make no representations, either express or implied, that the information displayed is accurate or fit for any purpose and expressly disclaims all liability for loss or damage arising from reliance upon the information displayed.