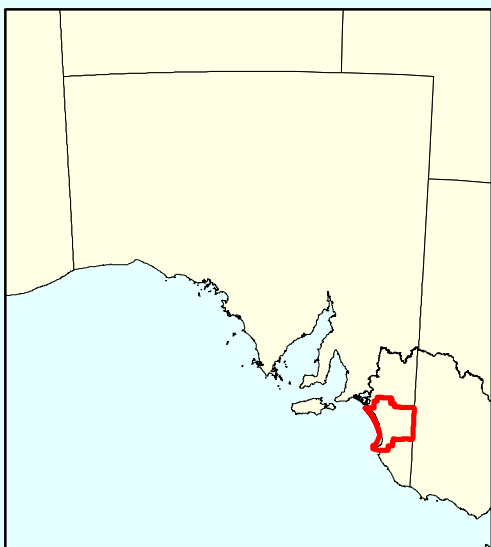
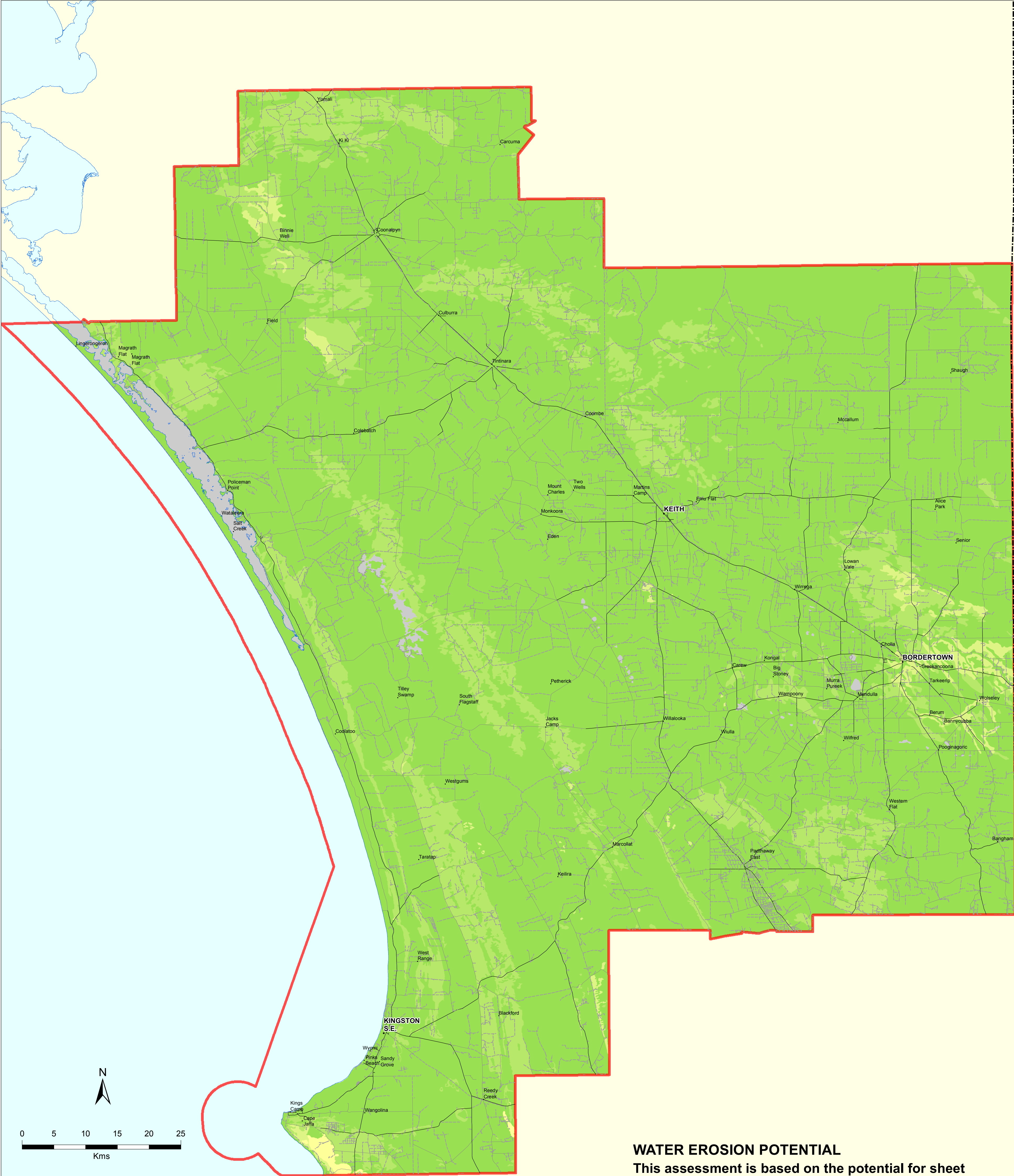


USE Water Erosion Potential



Produced by Regional GIS Information Officer
Department for Environment, Water and Natural Resources
Mt Gambier
www.environment.sa.gov.au
Data Source DEWNR SDE
Compiled 25 May, 2015
Projection Lambert Conformal Conic
Datum Geocentric Datum of Australia, 1994

© Copyright Department of Environment, Water and Natural Resources 2015.
All Rights Reserved. All works and information displayed are subject to Copyright. For the reproduction or publication beyond that permitted by the Copyright Act 1968 (Cwth), written permission must be sought from the Department.
Although every effort has been made to ensure the accuracy of the information displayed, the Department, its agents, officers and employees make no representations, either express or implied, that the information displayed is accurate or fit for any purpose and expressly disclaims all liability for loss or damage arising from reliance upon the information displayed.

WATER EROSION POTENTIAL

This assessment is based on the potential for sheet and rill erosion, interpreted from slope and erodibility of soil landscape map units. Map units are classified according to the dominant water erosion potential class occurring. No account is taken of land cover or land use - ie the assessment is made on the inherent characteristics of the land.

- | | |
|-----------------|------------------------------------|
| Low | No special management needed |
| Moderately low | Modified surface management needed |
| Moderate | Engineered works needed |
| Moderately high | Semi arable |
| High | Non arable |
| Very high | Non arable, not traversable |
| Extreme | Non productive |
| Not applicable | |