

Understanding your landscape levy

Under the *Landscape South Australia Act 2019* (the Act), land levies are collected on Kangaroo Island (KI) by KI Council on behalf of the KI Landscape Board.

These levies are raised by the Kangaroo Island Landscape Board (the Board), to fund activities and to enable landholders, industry and the community to manage our regional landscapes. The regional landscape levy is placed on all rateable land on Kangaroo Island.

The Board invests the levy based on priorities outlined in its Business Plan to meet its legislative obligations. Priority investment areas for the levy are managing pest plants and animals and a Grassroots Grant program to support the community to manage natural resources.

Regional landscape levy basis

The landscape levy is applied to all rateable land on Kangaroo Island.

The Kangaroo Island Landscape Board increased the levy for the 2022–23 financial year by CPI (1.5%).



Frequently asked question

Why is the regional landscape levy included on my council rates notice?

As required by the Act, the Kangaroo Island Council collects this levy on behalf of the State Government and the landscape board to help fund management of our landscapes. The KI Landscape Board pays the KI Council a collection fee each year for providing this service.

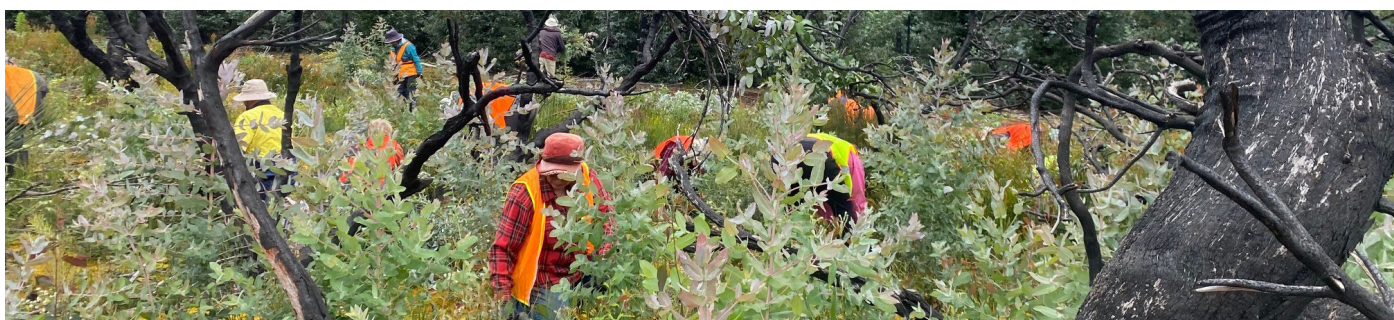
**For landscape levy enquiries,
contact the KI Landscape Board**

 08 8553 2476

 www.landscape.sa.gov.au/ki

 @KILandscapeSA

For more information please see the KI Landscape Board Business Plan 2022–23
www.landscape.sa.gov.au/ki/about-us/our-regions-plan






www.landscape.sa.gov.au/ki

 **LANDSCAPE
SOUTH AUSTRALIA
KANGAROO ISLAND**

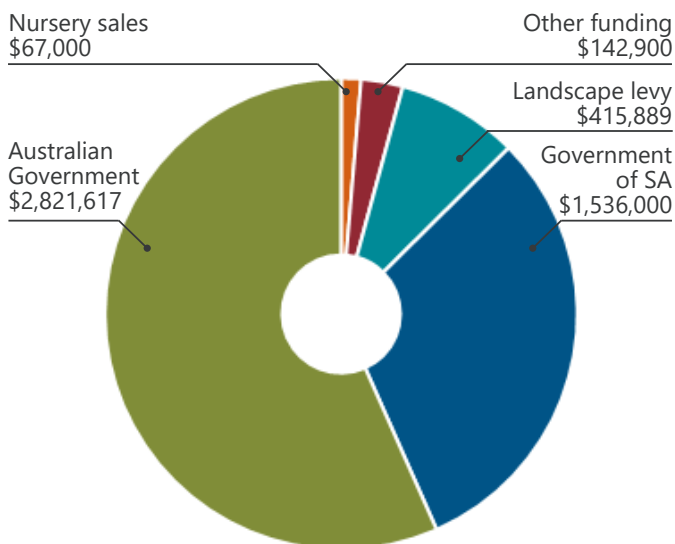
What services does your levy deliver?

Through the regional landscape levy, this year the Kangaroo Island Landscape Board will deliver the following activities:

| Priority | Activities |
|---|--|
|  <p>Weed management \$309,157</p> | <ul style="list-style-type: none"> » Landholder assistance to manage and identify weeds. » Access to cape tulip weed wipers. » Mapping and control of Weeds of National Significance, declared and environmental weeds, including Tasmanian bluegum and other post-fire weeds, in accordance with risk assessment priorities and regional management plans. » Surveillance for new weed infestations. |
|  <p>Pest animal management \$94,255</p> | <ul style="list-style-type: none"> » Implementation of regional declared animal policy, including assessment of domestic goat and ferret permits. » Investigation of feral goat and deer reports. » Key partner in the Primary Industries and Regional Development (PIRSA) <i>Coordinated Feral Pig Eradication Project</i>, including ground-based and aerial culling. » Technical support to <i>Feral cat eradication program</i>. |
|  <p>Grassroots Grants \$12,477*</p> <p><small>*Please note the Government of SA also contributes to the Grassroots Grants.</small></p> | <ul style="list-style-type: none"> » Grant program to fund local community groups, not-for-profit organisations and volunteers to sustainably manage their local landscape. » Eligible activities include: managing weeds, pests and diseases, protecting environmental assets, managing erosion, water or wetlands, revegetation, educational activities, raising community awareness and participation in landscape management. |

How overall funding, including the levy, is spent

Funding sources 2022–23



Program investment 2022–23

