

# Kangaroo Island Landscape Board Progress Report

July — September 2022





# Nurturing Kangaroo Island's landscapes together to create a thriving sustainable future

This is the vision of the Kangaroo Island Landscape Board (the Board). This report captures the work undertaken through Board projects from 1 July to 30 September 2022 to deliver this vision.

Formed in 2020, the Board aims to deliver practical, on-ground programs to help manage the island's water, land and soil, pests, and biodiversity in partnership with farming groups, environmental non-government organisations, local councils and community groups. The Board consists of seven members, including a Chair, Andrew Heinrich. They have developed a *Kangaroo Island Landscape Plan 2021-2026* (the Plan), which combines community values, local knowledge and scientific evidence into a strategic road map to guide how the Board will work in partnership with the community and investors to support the recovery and management of Kangaroo Island's landscapes into the future. The Plan aims to strike a balance between productivity and profitability, and looking after the environment to maintain biodiversity. The plan contains five regional priorities, each with a suite of focus areas to guide the actions for the Board and the wider regional community over the next five years.



COMMUNITY

**Priority: A connected community at the centre of decision making**

**Focus areas:**

- Working with all sectors of the community to improve the island's landscapes
- Making decisions based on the best available scientific, local and traditional knowledge
- Understanding, valuing and taking care of the natural environment and cultural heritage



BIODIVERSITY

**Priority: Healthy terrestrial and marine ecosystems and biodiversity**

**Focus areas:**

- Safeguarding the structure and function of habitats and ecosystems
- Protecting biodiversity to minimise species loss
- Improving our understanding of the environment and the beneficial role it plays



ECONOMY

**Priority: Sustainable primary production and the island's economy**

**Focus areas:**

- Improving the health of the soil, water and biodiversity that supports our economy
- Strengthening the viability of primary production through sustainable practices
- Working in partnership with industry to ensure the island's economy continues to prosper



WATER

**Priority: Effective water management**

**Focus areas:**

- Managing water resources sustainably and equitably for all users
- Improving water quality in the island's catchments and wetlands
- Protecting aquatic biodiversity and ecosystems



PESTS

**Priority: Effective terrestrial and marine pest management**

**Focus areas:**

- Controlling and, where possible, eradicating weeds, pests and diseases
- Strengthening KI's biosecurity arrangements
- Managing the impact of overabundant native species

## Contents

Water Resources Management	3	Sustainable Agriculture Program	10	Community Grants programs	16
Invasive Species Control Program	4	KI Narrow-leaved Mallee Program	12	Communications and media	17
Feral Cat Eradication Program	6	KI Glossy Black-cockatoo Recovery	13	Planning & Evaluation Team	18
Feral Pig Eradication Program	8	KI Dunnart Recovery	14	How we can help	19
KI Native Plant Nursery	9	Oyster Reef Construction	15		

Cover image: Landholder Casandra Douglas-Hill (Landscape Officer – Soil, KI Landscape Board) creating compost with Dr Mary Cole from AgPath at a practical composting workshop.

# Water Resources Management

## Overview:

This program supports the Kangaroo Island (KI) community to manage their water resources in line with the *Landscape South Australia Act 2019*.

## Key achievements July–September 2022:

- High flow gauging data was collected from watercourses across KI to improve the quality of the flow monitoring records.

## Community engagement:

- A graded catchment has been established as a demonstration site to promote water security works.
- Maps for use in water security planning were given to interested landholders.
- Four Water Affecting Activities (WAA) permit applications were received..
- Advised 25 people about water resources management, the requirement for WAA permits and development applications. A significant number of queries related to forestry transition.

## Future directions and upcoming events:

- Construct two more water security demonstration sites.
- Summarise data collected through vegetation and macroinvertebrate monitoring data for water security plans.
- Undertake spring macroinvertebrate surveys to monitor the health of KI watercourses.
- Continue to test the water administration platform 'mywater'. This is a new on-line system and customer portal for managing water, including applying for permits and licenses, and tracking their progress.
- Continue to work with the Department for Environment and Water (DEW) to summarise the *Environmental Assessment of Water Management Options for KI* project and work through how to use the findings to update the KI WAA policy.

25 people assisted with enquiries about water management

1 demonstration site established to promote water security

### Links to KI Landscape Plan

- Effective water management
- A connected community at the centre of decision making
- Healthy terrestrial and marine ecosystems and biodiversity
- Sustainable primary production and the island's economy

### Funded by:

- Government of South Australia:
  - State Appropriations
- Australian Government:
  - Future Drought Fund – NRM Drought Resilience Grant

Image below: Chapman River in high flow with water flowing across the samphire floodplain out to the ocean.





# Invasive Species Control Program

## Overview:

This program manages declared weed and pest animal species in accordance with risk assessment priorities and regional management plans.

## Key achievements July–September 2022:

### Declared weeds:

- A drone fitted with a hyperspectral camera was used to capture aerial imagery of one-leaf Cape tulip infestations across properties along Church Road. This flight marked the first stage in a project to evaluate the suitability and cost effectiveness of drones to detect, map and potentially control weeds in waterlogged or hard to access areas.
- The Weed Control Officer continued to control one-leaf Cape tulip infestations along 600 km roadsides across western KI, and provided support to the Department of Primary Industries and Regions (PIRSA) to help prioritise areas for control.
- Staff collaborated with PIRSA to help prioritise areas for control of Tasmanian blue gum wildlings.
- Work on controlling outlier populations of bridal veil continued as part of the *KI Narrow-leaved Mallee Woodland Threatened Ecological Community Recovery Program*. See report on page 12.

### Declared animal management:

- Staff contacted and visited 20 owners of domestic pigs to discuss the new declared animal policy for pigs on Kangaroo Island.
- Work on the eradication programs for feral cats and feral pigs continued (see reports on pages 6, 7 and 8).

## Community engagement:

- Declared animal and weed information was shared with the KI community through two Facebook posts, seeking reports of Canadian geese and seeking information from the community about priority weeds.
- Four landholders borrowed the Board's weed wipers to assist with control of one-leaf Cape tulip on their properties.

**5,000**  
rats tail plants found and removed from roadsides

**2**  
Canadian geese sightings investigated

Links to KI Landscape Plan

- A connected community at the centre of decision making
- Healthy terrestrial and marine ecosystems and biodiversity
- Sustainable primary production and the island's economy
- Effective terrestrial and marine pest management



- The Weed Control Officer attended the *Australasian Weeds Conference* in Adelaide and highlighted the Board's post bushfire weed control work through a conference presentation and poster.
- The Weed Control Officer assisted 22 landholders to identify weeds and understand their responsibility for weed management.

## Future directions and upcoming events:

- Continue seasonal control of priority weeds across KI, including one-leaf Cape tulip, salvation Jane and Montpellier broom.
- Facilitate the implementation of the new permit system for domestic pigs which will take effect on 31 December 2022.
  - » Communicate details about the new domestic pig permit system to the community through mainstream and social media platforms.
  - » Undertake property inspections and risk assessments ahead of issuing permits to owners of domestic pigs by 31 December.
- Survey KI weeds with Chris Brodie (State Herbarium Weed Botanist).
- Continue trialling the use of drones to detect and map one-leaf Cape tulip infestations.
- Continue to support PIRSA in prioritising post-bushfire weed control.
- Promote the Board's invasive species programs and provide advice to landholders on the control of declared animals and plants at the Kingscote and Parndana shows.

**25**  
people attended a follow-up Pc workshop

**354 ha**  
bridal creeper controlled in outliers on western KI

Funded by:

- Kangaroo Island Land Levy
- Government of South Australia and Australian Government:
  - » National Disaster Recovery Funding Arrangements through the Minister of Primary Industries and Regional Development
  - » Department for Infrastructure and Transport

Image left page 4: Hand removal of an outlier infestation of bridal creeper at Grace James Corner.  
Image left and right page 5: Drone fitted with hyperspectral camera used for detecting and mapping one-leaf Cape tulip.





# Feral Cat Eradication Program

## Overview:

The aim of the KI Feral Cat Eradication Program is to eradicate feral cats from KI, beginning on the Dudley Peninsula and then moving west across KI. The program is being led by the KI Landscape Board in partnership with the Kangaroo Island Council, Nature Foundation and many other partners.

## Key achievements July–September 2022:

- Eradication work continued over the Dudley Peninsula.
- 122 feral cats were culled by KI Landscape Board staff using cage traps and soft jaw foot-hold traps, over 9,211 trap nights for cage traps, and 279 trap nights for soft jaw foot-hold traps (in addition to the community trapping Blitz). 120 feral cats were captured in cage traps and two feral cats were captured in soft jaw foot-hold traps.
  - » An increase in staffing over the winter months has resulted in many feral cats being removed across the entire Dudley Peninsula this quarter.
  - » Twenty-eight feral cats were removed from behind the eradication front. The 4G camera network is proving invaluable at deciphering feral cat movements and providing early detections.
- 178 4G connected cameras were deployed to provide instant notification of feral cats and longitudinal datasets of threatened and endemic species (KI echidna, bush stone curlew, Rosenbergs goanna, southern brown bandicoot) across the entire 384 km² of the Dudley Peninsula.

## Community engagement:

- The community trapping blitz was well supported by the Dudley Peninsula community with 31 people participating. 62 feral cats were captured over the 10 days (35 females and 22 males). Only two domestic cats were captured. These were both micro-chipped and delivered to council for processing.



**122**  
feral cats culled across the  
Dudley Peninsula

**62**  
extra feral cats trapped  
during the blitz

- Links to KI Landscape Plan
- A connected community at the centre of decision making
  - Healthy terrestrial and marine ecosystems and biodiversity
  - Sustainable primary production and the island's economy
  - Effective terrestrial and marine pest management

Visit the  
[Feral Free Kangaroo  
Island Facebook page](#)  
to learn more

Image below: Participants with their dogs  
at the feral cat detection dog workshop.

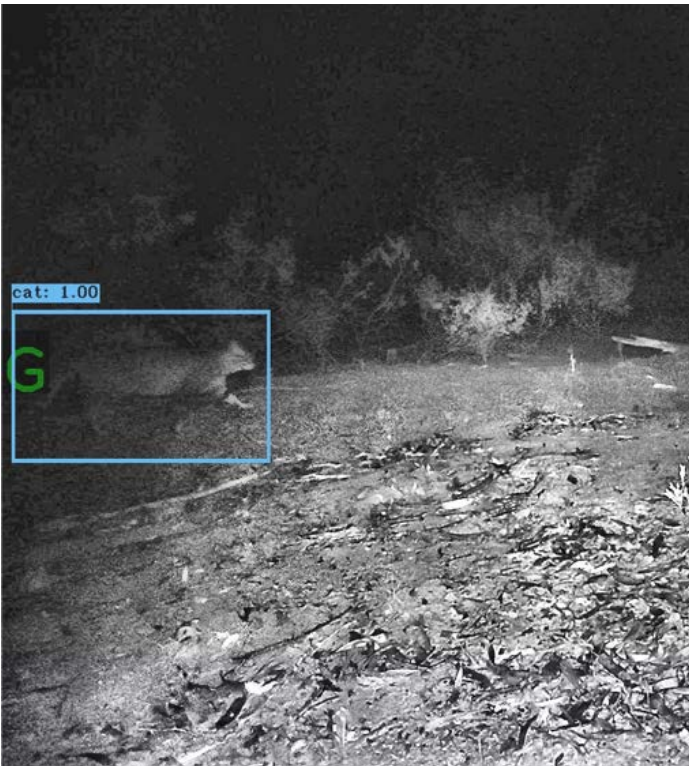
- The final workshop to train handlers and their dogs in the detection of feral cats humanely and ethically was conducted from 18–20 August.
  - » 14 participants attended with their 11 dogs.
  - » World renowned dog trainer Steve Austin from *Canine Training and Behaviour Educational Courses*, led the workshop.
  - » The first training workshops were held in 2019 but due to the 2019-20 bushfires and COVID-19, the final workshop could not take place until 2022.
  - » Steve was impressed with the amount of work participants had continued on with since his initial workshops.
  - » Two dogs (same handler) have now been certified for feral cat detection work and many other dogs are close.
- A newsletter about the Dudley Peninsula Feral Cat Eradication Program was emailed to interested community and stakeholder group members.

## Future directions and upcoming events:

- Deploy the remaining 32 4G connected cameras on Dudley Peninsula.
- Begin to use certified detector dogs to assist with feral cat eradication, primarily by capitalising on the immediate detections of feral cats on 4G cameras, and in the later stages of the eradication finding the remaining individuals.
- Continued vigilance behind the eradication line is required until feral cat eradication is complete, even as the 'behind the line' section expands.
- Continue exploring ideas for funding, with a fundraiser planned for Adelaide on 11 October.

Images below: Left: An original image, captured by a 4G camera and sent to eVorta for classification. The feral cat in this image is barely visible to the human eye and anyone looking at this image would have likely not seen it.

Right: The same image, with contrast greatly enhanced, clearly showing the feral cat in the image. The eVorta artificial intelligence algorithm found this feral cat within a fraction of a second.



**11**  
dogs with their 14 owners  
joined the detector dog  
workshop

**178**  
4G connected cameras  
deployed

- Funded by:
- Government of South Australia:
    - » Landscape Priorities Fund
  - Australian Government:
    - » Regional Land Partnerships
    - » Smart Farms Small Grants
  - Foundation for Rural and Regional Renewal
  - Members of the public



# Feral Pig Eradication Program

## Overview:

The program aims to eradicate feral pigs from KI across private and public land, parks, reserves, forestry and agricultural farmland using a coordinated landscape approach. This program is led by the Department of Primary Industries and Regions (PIRSA) in close collaboration with the Landscape Board and KI National Parks and Wildlife Service (NPWS). The achievements below are a record of the direct contributions made by Landscape Board staff.

## Key achievements July–September 2022:

- The Feral Animal Control Officer participated as an aerial marksman in the Thermal Assisted Aerial Cull (TAAC) operation between 25 July and 19 September. The eight week TAAC flew over 1750 km<sup>2</sup> of western KI, strategically gridding the landscape to search for and destroy feral pigs. Only 10 pigs were detected and destroyed during the TAAC, representing a significant decrease to the 243 pigs killed during the same period in 2021. Three of the 10 pigs were detected and destroyed by Board staff as part of the TAAC.
- The Feral Pig Control Officer provided on-ground and logistical support throughout the TAAC, and continued to track, monitor and pursue feral pigs on foot. Wet weather severely limited access to many areas.
- The Feral Animal Control Officer investigated nine reports of possible pig diggings, however all were found to have been made by echidnas.
- Both Control Officers continued to monitor cameras for feral pig activity across western KI.

## Community engagement:

- During the reporting period, the Control Officers engaged with five landholders to undertake control, monitor for pig sign and discuss different aspects of the Feral Pig Eradication Program.

## Future directions and upcoming events:

- On-ground control work will continue, weather permitting, focussing on searching for signs of feral pigs, establishing and monitoring free-feed stations, maintaining the 4G camera network and responding to feral pig detections with targeted baiting and ground shooting.

Image right: The view from the helicopter as it flies the coastline while the crew search for feral pigs as part of the Thermal Assisted Aerial Cull.



**10**  
feral pigs destroyed in  
aerial shoot

**1,750 km<sup>2</sup>**  
flown during aerial shoot

- Links to KI Landscape Plan
- A connected community at the centre of decision making
  - Healthy terrestrial and marine ecosystems and biodiversity
  - Sustainable primary production and the island's economy
  - Effective terrestrial and marine pest management

- Funded by:
- Government of South Australia
    - » National Disaster Recovery Funding Arrangements through the Minister of Primary Industries and Regional Development

# Kangaroo Island Native Plant Nursery

## Overview:

The Kangaroo Island Native Plant Nursery grows over 150 different species of KI native plants, which can be used for revegetating land, windbreaks, coastal plantings and home garden use. The Nursery Manager is available for native vegetation management advice to assist landholders with their projects.

## Key achievements July–September 2022:

- The KI Native Plant Nursery was open every Tuesday and Thursday this quarter until 25 August. During this time landholders came in to the nursery to collect their orders and place orders for the 2022-23 planting season.
- Seed has been collected from plants with woody fruit to help build up seed supplies to support future projects and facilitate propagation of tubestock for the 2023 planting season. Plant material has also been collected for cuttings.
- Propagation has begun for the 2023 planting season. 43 species have been sown to date.

## Community engagement:

- Nursery staff visited the Penneshaw Kindergarten where they presented to six students. The talk focussed on seeds, where they come from and how they germinate, and they planted some Allocasuarina seed for the class to watch grow following the visit.
- Nursery staff visited several sites to give advice about weed management, revegetation and planting garden beds.
- Nursery staff have also given advice to many KI landholders through phone calls, emails and clients directly visiting the nursery. This is usually to advise on the most suitable plants for their projects.

## Future directions and upcoming events:

- Investigate options for improving the existing seed bank including with a new storage facility, using a spatial database to record collection sites and recording seed bank contents onto a data base.
- Trial different propagation methods to expand on existing species range.



**43**  
species of native plants  
sown for the 2022-2023  
planting season

**6**  
kindy kids learnt about  
seeds and planted  
sheoaks

- Links to KI Landscape Plan
- A connected community at the centre of decision making
  - Healthy terrestrial and marine ecosystems and biodiversity
  - Sustainable primary production and the island's economy

- Funded by:
- Australian Government:
    - » National Landcare Program
    - Regional Land Partnerships
  - Prince Albert II of Monaco Foundation
  - Collette Travel

Image below: Stacey Duka and Caleb Pratt collecting their ordered plants.



# Sustainable Agriculture Program

## Overview:

This program uses a holistic, systems approach to assist primary producers to improve soil health and increase on-farm diversity as the basis for resilient grazing and cropping systems.

## Key achievements July–September 2022:

- Hosted two Australian Government representatives from the Department of Agriculture, Fisheries and Forestry on a two day field trip. The field trip visited sustainable agriculture projects being funded by the Australian Government on KI including:
  - » four demonstration farms with trials of different sustainable soil, pasture and grazing management practices
  - » a vineyard participating in an Integrated Pest Management (IPM) trial
  - » a property participating in feral cat control on western KI to reduce the impacts of Sarcosporidiosis on sheep production.
- Venetia Bolwell began as the new Regional Agricultural Landcare Facilitator (RALF) in August.
- Jack Schofield has been appointed as the Sustainable Agriculture Project Officer role to assist farmers develop property management plans.

## Community engagement:

- Dr Paul Horne and Rebecca Addison from IPM Technologies visited the island in August. They presented two workshops: the first for a general audience and the second for viticulturists. The consultants also met with the farmers and viticulturists undertaking IPM trials to continue developing and refining their IPM strategies being implemented as part of their trials. 12 people attended the workshops. See *The Islander* article <https://www.theislanderonline.com.au/story/7885270/ki-landscape-board-hold-workshops-to-help-control-invertebrate-pests/>
- A seasonal forecasting and climate change projection workshop *What to expect this season* was held in September with Darren Ray, Applied Consulting Climatologist. The workshop was to provide the KI community with a recap of the past season, information on predicted weather over the next nine months and to inform the community of the implications of current climate change projections. 40 people attended the workshop.



**12**  
people attended  
IPM workshops

**40**  
people attended seasonal  
forecasting workshop

**Links to KI Landscape Plan**

- A connected community at the centre of decision making
- Sustainable primary production and the island's economy

**Funded by:**

- Australian Government:
  - » National Landcare Program Regional Land Partnerships
  - » Smart Farms Small Grants Program

*Image below left: Participants at the Seasonal forecasting and climate change projection workshop.*

*Image below right: Participants at the Farm Conversations event.*

*Image opposite page left: Australian Government representatives meeting with local farmers working with the KI Landscape Board to control feral cats on western KI.*

*Image opposite page far right: Sampling invertebrates at the IPM workshop.*



- Hosted a *Farm Conversations* event with three key speakers from AGF Seeds, Biosys Agribusiness and Australian Vermiculture in September. The presentations covered the costs, benefits and practical applications of farming inputs to improve soil health, productivity and profit. 18 local farmers attended the event and stayed on for lunch afterwards to share information and contact details.
- Dr Mary Cole from Agpath visited KI in September to present at a practical composting workshop focussed on how to stimulate the microbiology in large and intensive agriculture. Farmers who attended made biological amendments for broadacre, viticulture, horticulture and home gardens which was then trailed on a grazing property. 36 people attended.
- Facilitated seven one on one consultations with Mary Cole including KI Brewery, The Islander Estate, False Cape and Bay of Shoals wineries and three grazing properties. After submitting a recent soil analysis (biological, chemistry and visual soil assessment) an action plan was developed for each property to improve soil quality, reduce chemical applications, increase predator species, reduce chemical build up in soils and reduce issues such as mites, mildew and botrytis.
- Promoted the opportunity for farmers to develop free property management plans through *The Islander*, social media posts, posters and factsheets. See *The Islander* article <https://www.theislanderonline.com.au/story/7926807/ki-landscape-board-expressions-sought-for-property-management-plans/>

## Future directions and upcoming events:

- Assist The Islander Estate Vineyards and Bay of Shoals wineries to trial [CropBiolife](#) and biological inputs over the next 12 months.
- Conduct spring soil sampling on the four sustainable agriculture demonstration farms.
- Begin work with PIRSA to develop a farmers tools and tech field day in March 2023.
- Sample invertebrates at IPM trial vineyards to measure their response to various paddock treatments.
- Facilitate a visit by IPM Technologies to KI in November.
- Coordinate the first property management planning day in late November. This introductory session will include conducting a needs analysis to determine the modules participants would like in their property management plans. The needs analysis will inform the engagement of appropriate consultants to suit the needs of participants.



**18**  
people attended Farm  
Conversations event

**36**  
people attended  
composting workshop





# KI Narrow-leaved Mallee Woodland Threatened Ecological Community Recovery Program

## Overview:

This project will improve the condition, extent and connectivity of remnant KI Narrow-leaved Mallee woodland community patches through direct investment in threat mitigation actions and empowering landholders to undertake best practice management of narrow-leaved mallee on their properties.

## Key achievements July–September 2022:

- Two landholders protected 4.35 ha of remnant and pollarded KI narrow-leaved mallee woodland from stock grazing and trampling with 3.6 km of fencing.
- Nine landholders revegetated 10.54 ha of KI narrow-leaved mallee woodland to strengthen corridors between remnant vegetation patches. The revegetation was protected with 3.74 km of new fences, as well as existing fencing and individual tree guards. Tubestock was used for the revegetation.
- Bridal veil was controlled at two outlier infestations over 187 ha at Grace James Corner and Baudin Beach, with over 1,820 kg of corms removed.

## Community engagement:

- The 2022–23 KI Narrow-leaved Mallee On-Ground Works funding round was advertised to landholders via *The Islander*, social media, KILB website and direct emails. 33 applications were received totalling over \$370,000 worth of projects
- Technical advice was given to landholders about revegetation planting and protection fencing, the ecological restoration of KI Narrow-leaved Mallee using pollarding and burning, weed control, vegetation clearance and management advice for vegetation under Heritage Agreement.

## Future directions and upcoming events:

- Control of emerging bridal veil infestations will be completed within 1000 ha of critical nationally threatened plant habitat.

Image right: KI Narrow-leaved Mallee woodland revegetation in MacGillivray.



**10.54 ha**  
KI narrow-leaved mallee  
woodland revegetated

**1,820 kg**  
bridal veil corms removed  
from outlying populations

- Links to KI Landscape Plan
- A connected community at the centre of decision making
  - Healthy terrestrial and marine ecosystems and biodiversity

- Funded by:
- Australian Government:  
National Landcare Program  
Regional Land Partnerships

# Glossy black-cockatoo Recovery Program

## Overview:

This project will deliver emergency interventions for SA glossy black-cockatoos (*Calyptorhynchus lathami halmaturinus*) affected by bushfires to assist with their recovery, including protecting glossy black-cockatoo (glossy) nests from predators to improve nesting success.

## Key achievements July–September 2022:

- The annual glossy black-cockatoo population census has been completed.
  - 428 glossy black-cockatoos were counted. This is the minimum population size.
  - This count is better than the count recorded in 2021, but still less than what was recorded in 2020.
  - Fewer fledglings were found at burnt sites on western KI, compared with some unburnt sites on eastern KI. This indicates the bushfires are still impacting glossy black-cockatoo recruitment.
- Late glossy black-cockatoo nestlings were banded.
- Artificial nest boxes and natural hollows on eastern KI were maintained.
  - 29 nest boxes and natural hollows were treated to prevent feral honey bee occupation.
  - All nest boxes in the American River area were closed to prevent galahs using them.
  - Rotten duck eggs were removed following duck nesting season. Nests used by ducks often contain multiple rotten eggs, as usually only a portion of the eggs they lay end up hatching.
  - Sandra Leigh has joined the team and received some great climbing practice helping to undertake this work.

## Community engagement:

- 36 volunteers contributed over 150 hours to the glossy black-cockatoo population census. We couldn't have done it all without them!
- Over 40 landholders planted drooping sheoaks (glossy black-cockatoo feeding habitat) on their properties this year through the revegetation project.
- The annual glossy black-cockatoo population census was promoted on Facebook.

## Future directions and upcoming events:

- Compiling the Annual Glossy black-cockatoo Census Report.
- Promoting the results of the annual glossy black-cockatoo population census.
- Seeking funding for future years to continue to assist with the recovery of glossy black-cockatoos.

Image right: Newest team member Sandra Leigh, who recently completed her tree climbing accreditation to work with the glossy black-cockatoo recovery program, looking completely at home up a tree as she protects an artificial nest box from predators in American River.

**428**  
glossy black-cockatoos  
recorded in census

**40**  
landholders planted  
glossy feeding habitat

- Links to KI Landscape Plan
- A connected community at the centre of decision making
  - Healthy terrestrial and marine ecosystems and biodiversity
  - Effective terrestrial and marine pest management





# Kangaroo Island Dunnart Recovery Program

## Overview:

This project will support the recovery of the Kangaroo Island dunnart following the 2019–20 bushfires by implementing key priorities of the *2011 Recovery Plan for the Kangaroo Island dunnart* and the 2019 draft *Conservation Advice for the Kangaroo Island dunnart*.

## Key achievements July–September 2022

- A spring fauna survey was undertaken as part of a long-term monitoring strategy for the KI dunnart to monitor trends in recovery.
  - » These surveys detected the Kangaroo Island dunnart at 14 sites on 347 individual occasions.
  - » 30 sites were re-surveyed and nine sites were surveyed for the first time. All sites were within the known range of the KI dunnart.
  - » The long-term monitoring program will allow us monitor changes in the species occupancy into the future and help us to understand more about the species habitat preferences, its response to bushfires and threats such as feral cats and conservation actions targeted to protect this species.
  - » Experimental design, number and selection of sites has been informed by previous work undertaken by Hohnen et al., and recent island-wide fauna surveys to detect the species post-fire by this project.
- The threatened species team have continued to control feral cats across areas impacted by bushfires to support wildlife recovery. The team removed 172 feral cats from over 15,222 trap nights.
  - » The team continued to expand the Celium trap alert network which now covers approximately 88,000 ha and connects more than 300 traps on the islands western end, including across critical KI dunnart habitat. This network is saving staff resources and time, which they can the direct towards using other tools and technology to control feral cats more effectively. See <https://encounter.nz/>

## Community engagement:

- The team are working closely with other project partners and landholders to broaden the impact of control activities.
  - » NPWS Rangers have been helping to install KI dunnart survey sites and to manage feral cat trap networks over weekends, which keeps traps open seven days a week, providing a higher level of protection to critical threatened species habitat.
  - » The team is supporting AgKI to deliver a landholder led feral cat trapping blitz using Celium trap alert technology. This will make trapping easier and more time efficient for landholders seeking to manage feral cats more effectively to benefit biodiversity and production.

## Future directions and upcoming events:

- Survey the remaining 21 fauna sites as part of the a long-term monitoring strategy.
- Continue strategic feral cat control within KI dunnart habitat.

**347**  
KI dunnart detections  
at 14 sites

**172**  
feral cats removed from  
KI dunnart habitat

Links to KI Landscape Plan

- A connected community at the centre of decision making
- Healthy terrestrial and marine ecosystems and biodiversity
- Effective terrestrial and marine pest management

Funded by:

- Australian Government:
  - » Environmental Restoration Fund
- Landcare Australia and National Landcare Network
  - » Landcare Led Bushfire Recovery Grants Program

Image below: Joe Donaldson, Feral Cat Field Officer with the longest feral cat caught so far at 1.02 m.



# Oyster Reef Construction Program

## Overview:

This project will build a series of 20 small, native oyster shellfish reefs close to Kingscote and American River to provide important habitat for premium recreational fishing species and to contribute to the national shellfish reef restoration initiative. The reefs, once placed on the seabed, will be initially seeded with native oyster larvae (spat) and will also provide a substrate for wild spat to settle.

## Key achievements July–September 2022:

- Development approval was received for the construction of the oyster reefs from the State Commission Assessment Panel.
- Permit applications were prepared and submitted in preparation for spat collection and translocation in the 2022-23 native oyster spawning period.
- Baseline video monitoring was undertaken at reef sites and adjacent control sites at American River and Kingscote using Baited Remote Underwater Video (BRUV).

## Community engagement:

- Two radio interviews were given to ABC Hobart about the reefs and the contribution from Tasmanian ceramicist Jane Bamford.

## Future directions and upcoming events:

- Construct reef foundation and add smaller reef elements by SCUBA (Self-Contained Underwater Breathing Apparatus) in summer 2022.
- Deploy new oyster collecting baskets in Western Cove during the upcoming native oyster spawning season from spring 2022.

Image right: Alex Comino, Project Officer Coasts, travelling out with a BRUV to monitor reef and control sites.



**1**  
Development Approval  
received

**32**  
BRUV surveys monitored  
4 sites

Links to KI Landscape Plan

- A connected community at the centre of decision making
- Healthy terrestrial and marine ecosystems and biodiversity
- Sustainable primary production and the island's economy

Funded by:

- Australian Government:
  - » Fisheries Habitat Restoration



# Community grants programs

## Overview:

These grant programs support the KI community to undertake on-ground actions to benefit the natural resources of Kangaroo Island. Grants reported here include the KI Landscape Board Grassroots Grants and Bushfire Recovery Fencing Grants.

## Key achievements July–September 2022:

### Kangaroo Island Bushfire Recovery Fencing Grants

- 47 km of fencing has been installed by five landholders to protect 397 ha of burnt and regenerating native vegetation, some of which contains threatened species.

### Kangaroo Island Grassroots Grants

- Four projects from the 2021-22 KI Grassroots Grants round were completed and have achieved:
  - » Initial control of an outlier salvation Jane population over 245 ha.
  - » Three working bees were held in the Parndana township with volunteers controlling bridal creeper, African weed orchid, watsonia, sallow wattle, Cape Leeuwin wattle, bluebell creeper, bracelet honey-myrtle and pine trees over 4 ha. A Parndana township weeds brochure was also revised, re-printed and distributed to local residents.
  - » 1,091 seedlings were planted over 3 ha and protected with a 0.87 km fence to connect blocks of remnant native vegetation at Pelican Lagoon.
  - » 2.36 km of fencing was built to protect regenerating native vegetation from stock and fence an area of 10.75 ha for future revegetation near Parndana.

## Community engagement:

- The KI Bushfire Recovery Fencing Grants were re-advertised to all landholders through Facebook.

## Future directions and upcoming events:

- The KI Bushfire Recovery Fencing Grants will continue to run until 30 November 2022.

Image right: Volunteers weeding in the Parndana township as part of a Grassroots Grant.



**397 ha**  
regenerating burnt native  
vegetation protected

**4**  
Grassroots Grants projects  
from 2021-22 finished

- Links to KI Landscape Plan
- A connected community at the centre of decision making
  - Healthy terrestrial and marine ecosystems and biodiversity
  - Sustainable primary production and the island's economy
  - Effective water management
  - Effective terrestrial and marine pest management

- Funded by:
- Kangaroo Island Land Levy
  - Government of South Australia:
    - » State Appropriations
    - » Minister for Environment and Water

# Communications and media

## Overview:

This project provides professional communication services, processes, advice and support to the Board, General Manager and project staff. All work is in line with the Board's priorities and direction and tailored to the community and national/international audiences through targeted messaging and communication methods.

## Key achievements July–September 2022:

- Worked towards the launch of the KILB's YouTube channel, production of videos, and other visualisation projects.
- The first design of the mural art on the Dauncey Street office building wall drafted and presented to the Board.
- First attempt to capture the footage of board meetings and workshops conducted with production under way. This will serve as the visual material for Board Members' further community engagement.
- Planned, interviewed, filmed, edited and produced the KILB staff's welcome/introduction video for recruitment. See <https://youtu.be/-gOyhZZccQ>

## Community engagement:

### 1. Media

#### 1.1 National/state media

- July: Fishing SA Magazine: Native oyster reefs to attract fish on KI
- 24-07-2022 and 25-08-2022 *ABC Radio Hobart*: Interviews with Alex Comino about KI oyster reefs. See <https://www.abc.net.au/hobart/programs/your-afternoon>
- 28-08-2022 [Endangered glossy black cockatoo spotted in Deep Creek National Park for the first time since the '70s](#) (*Glam Adelaide*)

#### 1.2 Local media

- 07-07-2022 [Feral cats major killers of KI endangered dunnarts](#) (*The Islander*)
- 31-08-2022 [The SA glossy black cockatoo has been spotted at Deep Creek National Park](#) (*The Times*)
- 04-09-2022 Glossy black cockatoo spotted on the SA mainland again (*Cosmos*). See [One of Australia's rarest cockatoos has been spotted on the SA mainland for the first time since the 70s](#)
- 15-09-2022 [Shadow Minister for Regional SA Nicola Centofanti visits Kangaroo Island](#) (*The Islander*)
- 30-09-2022 [KI Landscape Board: expressions sought for property management plans](#) (*The Islander*)

### 2. Facebook

- 35 posts with reach and engagement rate growing.

### 3. Community engagement events

- Engaged with Kangaroo Island Business and Brand Alliance with regards to the Authentic KI branding strategy.

## Future directions and upcoming events:

- Further emphasis on video production to promote board activities and achievements.
- Curation of Nature Festival on KI in October and Kingscote and Parndana Shows.
- Exploration and assistance in fundraising events.

**6**  
media articles  
published

**35**  
articles posted on  
Facebook

- Links to KI Landscape Plan
- A connected community at the centre of decision making
  - Healthy terrestrial and marine ecosystems and biodiversity
  - Sustainable primary production and the island's economy
  - Effective water management
  - Effective terrestrial and marine pest management

- Funded by:
- Australian Government:
    - » National Landcare Program
    - » Regional Land Partnerships
  - Government of South Australia:
    - » State Appropriations



# Planning and Evaluation Team

## Overview:

This team works with all KI Landscape Board projects to support their effective and efficient delivery and to assist them to meet their reporting responsibilities. The team also coordinates the KI Landscape Board's strategic planning, including evaluating performance towards implementing the KI Landscape Plan.

## Key achievements July–September 2022:

- Submitted output, annual and outcome reports for the following projects to the Australian Government through their on-line reporting tool (MERIT):
  - » Core Services
  - » Recovering the KI Narrow Leaved Mallee Woodland Threatened Ecological Community through local landscape action
  - » Creating a safe haven for the KI dunnart and other priority threatened species by eradicating feral cats from the Dudley Peninsula
  - » Building resilient agricultural systems on Kangaroo Island
  - » Supporting the recovery of the KI dunnart through conservation and management actions
  - » Building native oyster shellfish reefs to improve fish habitat on KI
  - » South Australian Glossy Black-Cockatoo Post-fire Recovery
  - » Controlling feral cats to protect priority fauna species on KI
  - » Supporting the post-fire recovery of the Glossy Black-cockatoo on KI through conservation and management actions
  - » Helping threatened species on KI to recover from the 2019-20 bushfires through on-ground actions
  - » Prioritising on-ground actions for the Endangered Australian sea lion
  - » KI Echidna monitoring, protection and recovery network.
- Work Health and Safety Plans developed and submitted for:
  - » Prioritising on-ground actions for the Endangered Australian sea lion
  - » KI Echidna monitoring, protection and recovery network

## Community engagement:

- Assisted the Communications and Media team and project staff to update the KI Landscape Board website. See [www.landscapesa.gov.au/ki](http://www.landscapesa.gov.au/ki)
- Assisted the Communications and Media team and project staff to develop posters, web pages, media articles, factsheets, newsletters and flyers for KI Landscape Board projects.

## Future directions and upcoming events:

- Coordinate the Nature Festival event showcasing Kangaroo Island Landscape Board projects in October 2022.
- Assist projects with reporting and monitoring requirements and liaise with the Australian Government and project staff to meet contracted requirements for projects.
- Finalise the KI Landscape Board MERI plan to measure the success of the KI Landscape Plan in maintaining or improving the condition of KI's landscapes.

20

reports submitted to project funders

2

new projects supported

Links to KI Landscape Plan

- A connected community at the centre of decision making
- Healthy terrestrial and marine ecosystems and biodiversity
- Sustainable primary production and the island's economy
- Effective water management
- Effective terrestrial and marine pest management

Funded by:

- Australian Government:
  - » National Landcare Program
  - » Regional Land Partnerships

Image below: Trevally photographed at American River reef using BRUVs as part of the Oyster Reef Construction Program.



# How we can help you



KI Native Plant Nursery

- » local native plants
- » growing, planting and revegetation advice suited to KI soils and climate
- » plant identification

Contact Jo McPhee  
0437 322 692  
[jo.mcphee@sa.gov.au](mailto:jo.mcphee@sa.gov.au)



KI Narrow-leaved mallee

- » advice on how to manage KI narrow-leaved mallee
- » grants available to protect and revegetate KI narrow-leaved mallee woodland


Contact Kym Lashmar  
8553 2476  
[kym.lashmar@sa.gov.au](mailto:kym.lashmar@sa.gov.au)



Regional Agricultural Landcare Facilitator

- » assist with sustainable agriculture activities, e.g. workshops, demonstrations and peer learning sessions

Contact Venetia Bolwell  
0437 172 877  
[venetia.bolwell@sa.gov.au](mailto:venetia.bolwell@sa.gov.au)



Water management

- » advice on water affecting activities and permits e.g. dams and earth works in or near a water body
- » advice on water resources e.g. salinity, wells

Contact Mark Agnew  
8553 2476  
[mark.agnew@sa.gov.au](mailto:mark.agnew@sa.gov.au)



Weed control

- » weed management advice
- » weed identification
- » reports of new weeds
- » hire of cape tulip weed wiper

Contact Jason Walter  
0418 708 557  
[jason.walter@sa.gov.au](mailto:jason.walter@sa.gov.au)



Pest animal control

- » domestic goat and pig permits
- » feral goat and deer reports

Contact Bronwyn Fancourt  
8553 2476  
[bronwyn.fancourt@sa.gov.au](mailto:bronwyn.fancourt@sa.gov.au)



Feral pig control

- » control of feral pigs
- » feral pig trap hire
- » feral pig reports on eastern KI

Contact Brenton Florance  
0427 618 304  
[brenton.florance@sa.gov.au](mailto:brenton.florance@sa.gov.au)



Feral cat control

- » control of feral cats
- » feral cat trap hire

Contact James Smith  
0447 155 115  
[james.smith5@sa.gov.au](mailto:james.smith5@sa.gov.au)