

Kangaroo Island Landscape Board Progress Report

January — March 2026



Nurturing Kangaroo Island's landscapes together to create a thriving sustainable future

This is the vision of the Kangaroo Island Landscape Board (the Board). This report captures the work undertaken through Board projects from 1 January to 31 March 2026 to deliver this vision. Formed in 2020, the Board aims to deliver practical, on-ground programs to help manage the island's water, land and soil, pests, and biodiversity in partnership with farming groups, environmental non-government organisations, local councils and community groups. The Board consists of eight members, including a Chair, Andrew Heinrich. They have developed a *Kangaroo Island Landscape Plan 2021-2026* (the Plan), which combines community values, local knowledge and scientific evidence into a strategic road map to guide how the Board will work in partnership with the community and investors to support the recovery and management of Kangaroo Island's landscapes into the future. The Plan aims to strike a balance between productivity and profitability, and looking after the environment to maintain biodiversity. The plan contains five regional priorities, each with a suite of focus areas to guide the actions for the Board and the wider regional community for five years.

	Priority: A connected community at the centre of decision making Focus areas:
COMMUNITY	<ul style="list-style-type: none"> Working with all sectors of the community to improve the island's landscapes Making decisions based on the best available scientific, local and traditional knowledge Understanding, valuing and taking care of the natural environment and cultural heritage
	Priority: Healthy terrestrial and marine ecosystems and biodiversity Focus areas:
BIODIVERSITY	<ul style="list-style-type: none"> Safeguarding the structure and function of habitats and ecosystems Protecting biodiversity to minimise species loss Improving our understanding of the environment and the beneficial role it plays
	Priority: Sustainable primary production and the island's economy Focus areas:
ECONOMY	<ul style="list-style-type: none"> Improving the health of the soil, water and biodiversity that supports our economy Strengthening the viability of primary production through sustainable practices Working in partnership with industry to ensure the island's economy continues to prosper
	Priority: Effective water management Focus areas:
WATER	<ul style="list-style-type: none"> Managing water resources sustainably and equitably for all users Improving water quality in the island's catchments and wetlands Protecting aquatic biodiversity and ecosystems
	Priority: Effective terrestrial and marine pest management Focus areas:
PESTS	<ul style="list-style-type: none"> Controlling and, where possible, eradicating weeds, pests and diseases Strengthening KI's biosecurity arrangements Managing the impact of overabundant native species

Contents

Water Resources Management	3	KI Native Plant Nursery	11	Communications and Media	16
Invasive Species Control Program	4	KI Woodland Bird Recovery Project	12	Planning & Evaluation Team	18
Feral Cat Eradication Program	6	KI Habitat for Biodiversity Project	13	Community Grants Program	19
Sustainable Agriculture Program	8	Improving Coastal Habitat Project	14	How we can help	20
KI Habitat Recovery Project	10	Environmental Education Program	15		

Cover image: Nursery Assistant, Kelly Mulvaney, at the KI Native Plant Nursery.

Water Resources Management

Overview:

This program supports the Kangaroo Island (KI) community to manage their water resources in line with the *Landscape South Australia Act 2019* (the Act).

Key achievements January–March:

- Continued to drive the Water Affecting Activity (WAA) Control Policy Review with the WAA Control Policy Review subcommittee convening on three occasions.
- 11 Water Affecting Activity Permits were assessed, consisting of a range of works such as new dams, dam enlargements and graded catchments. 92% of applications were assessed and approved within one week, and two thirds of these applications were approved within 48 hours.
- Supported the Landscape Board's Property Management Planning (PMP) program workshop on Natural Sequence Farming and techniques that can increase rehydration of landscapes. Attendees were informed of permit requirements associated with the techniques that were being promoted.

Community engagement:

- Advised 43 people on matters including dam construction/enlargement, water quality, property-scale water security and WAA permitting requirements.
- Performed nine site visits relating to WAA permits placed, potential applications for works or compliance-related issues.
- Created and supplied 42 property maps to community members with best available information on dam volumes, dam catchment areas, 1m contours, drainage lines and dam water security under climate change scenarios (RCPs).

Future directions and upcoming events:

- Continue the review of the KI Water Affecting Activities Control Policy.
- New aerial imagery was captured across KI in December 2025. The imagery will be used to identify unauthorised dams constructed since 2020.



Image right: Visiting a tributary of the Little Timber Creek during a property visit.

43
people advised about water management

42
property maps created for community members

Links to KI Landscape Plan

- Effective water management
- A connected community at the centre of decision making
- Healthy terrestrial and marine ecosystems and biodiversity
- Sustainable primary production and the island's economy

Funded by:

- Government of South Australia:
 - » State Appropriations

Invasive Species Control Program

Overview:

This program manages declared weed and pest animal species in accordance with risk assessment priorities and regional management plans.

Key achievements January–March:

Declared weeds

- As caltrop season finishes we have continued to monitor and control it at Penneshaw, American River, Kingscote and Emu Bay. No plants were found at Emu Bay for the third year in a row. No plants were found in Kingscote either, after one plant was found there last year. More plants were found at Penneshaw and American River compared to last year. Penneshaw had 14 plants compared with three last year, and American River had 23 plants compared with four last year. The increased numbers may be due to higher summer rainfall.
- 406 khaki weed plants were controlled at Reeves Point. This is the fifth summer we have controlled this statewide category 1 weed there. A considerable number of new plants continue to come up there. Only 383 khaki weed plants were found there last year.
- Only one silverleaf nightshade plant was found and controlled at American River this year, compared with four plants last year. We have been controlling this Weed of National Significance (WoNS) for five years now after a resident's report.
- 50 fountain grass plants were controlled along the Emu Bay foreshore. This is an increase from last year when only six fountain grass plants were found there.
- 406 gorse plants were controlled across seven infestations in Cassini and Newland. No gorse was found at two of these sites. Only four of these plants were mature fruiting plants and had their seed bagged. The remaining plants were seedlings or juvenile plants.
- Approximately 3,110 blackberry plants were found and controlled at 12 sites across KI this year. This included two new infestations on properties found in Newland and Dudley. This is a significant increase from the 520 plants found and controlled last year.
- Approximately 6,570 horehound plants were controlled along 340 km of roadsides in Haines, Menzies and the Dudley. Significant numbers of plants were found along North Cape and Willoughby Roads. This summer there has been a considerable increase in the number of horehound plants found along roadsides and on people's properties.
- Other noteworthy weed control included spraying summer weeds along road verges of main and side roads. This included stinkwort, fleabane, rats tail grass and African daisy. Fleabane and stinkwort continue to be a problem around our towns and are starting to move further west from Parndana.



Image: The new blackberry infestation found in Newland.

1
pilot control trial for
Tasmanian bluegum
wildlings reported

10,580
declared and priority
weeds removed

Links to KI Landscape Plan

- A connected community at the centre of decision making
- Healthy terrestrial and marine ecosystems and biodiversity
- Sustainable primary production and the island's economy
- Effective terrestrial and marine pest management

Tasmanian blue gum wildling (TBG) control

- During this period the findings of the pilot trial have been written into a report. The report provides a data driven eradication model with associated costings.

Declared and over-abundant animal management

- A trial to control little corellas was undertaken at KI Community Education (KICE) Kingscote Campus and outside of the town of Kingscote. The trial was harder to undertake at KICE as the street lights made it too light at night, and the birds were often disturbed by the community as they were settling to roost. However, the trial showed the technique can be successful. Funding is now required to implement future control work.
- Work on the eradication program for feral cats continued (see report on page 6).

Feral pig eradication program

- We continued to implement, monitor and support managing domestic pigs and to act as conduit for community reports of feral pigs to the Department for Primary Industries and Regions SA (PIRSA). No reports of feral pigs were received.

Community engagement:

Declared weeds

- Nine people were supported with weed advice: two were assisted to identify weeds, five with weed control advice and two reported a weed.
- [Fact sheets for 15 priority weeds](#) were developed and posted on the Board website.

Tasmanian blue gum wildling (TBG) control

- Continued to work, engage with and retain the support of, key landholders and other stakeholders for TBG control.

Declared animal management

- Investigated the escape of a domestic pig. The pig was located via the feral cat camera array on the Dudley Peninsula. The owners were then able to find their pig and walk him home.

Future directions and upcoming events:

Declared weeds

- Continue the weed control program for our priority weeds targeting: bluebell creeper, New Zealand mirror bush, sweet pittosporum and African boxthorn.

Tasmanian blue gum wildling control

- We will continue to work with TBG Ministerial Task Force to resolve policy questions relating to TBG control and how to position TBG eradication for funding support.

Declared and over-abundant animal management

- Continue supporting the Dudley Peninsula feral cat eradication program.
- Continue inspecting properties permitted for domestic goats and pigs and re-issue permits as required.
- Continue to manage the domestic pig permitting system, deliver compliance actions as required, respond to community reports and procure specialised equipment to enable rapid response efforts in the case of escaped domestic pig or feral pig sightings.

Feral pig eradication program

- PIRSA will continue searching for feral pigs with detection dogs and a helicopter with thermal capabilities in 2026. PIRSA plans to finish KI feral pig eradication on 30 June.

15
priority weed factsheets
developed

1
pilot trial for little corellas
conducted

Funded by:

- Kangaroo Island Landscape Levy
- Australian Government
 - » Saving Native Species - Priority Places
- Government of South Australia:
 - » Landscape Priorities Fund
 - » Department of Primary Industries and Regions
 - » Department for Infrastructure and Transport

Feral Cat Eradication Program

Overview:

This program is working to eradicate feral cats from the Dudley Peninsula. The program is being led by the KI Landscape Board in partnership with the KI Council, Nature Foundation and many other partners.

Key achievements January–March:

- Since the beginning of the year the team has removed 92 feral cats: 71 from the Dudley Peninsula and 21 from west of the feral cat exclusion fence to Muston, Florance and American River Roads.
- In March 2026 during the election campaign, the Government of South Australia committed \$800,000 to continue the Dudley Peninsula Feral Cat Eradication Program on Kangaroo Island, calling it a critical step toward securing one of Australia’s most important conservation opportunities.
- Feral Animal Control Officer Brenton Florance, has been brought across to the team full-time to focus on applying his eradication skill-set and experience during this critically important phase of the program.

Community engagement:

- Program Leader – KI Feral Cat Eradication Paul Jennings, presented at the Invasive Species Councils biosecurity/environmental networking event on the February 25. The event at Strathalbyn was attended by over 80 people from government, non-government organisations and philanthropic sectors.

92
feral cats removed
from KI

3
presentations given
across Australia

Links to KI Landscape Plan

- A connected community at the centre of decision making
- Healthy terrestrial and marine ecosystems and biodiversity
- Sustainable primary production and the island’s economy
- Effective terrestrial and marine pest management

- Paul Jennings, and Project Officer – Operations and Control Technologys Chantelle Geissler, presented at the 2026 SA *Aboriginal Land and Sea Conference* with Ronald Boland owner/operator *Tracks in the Sand* and Bessie Buckskin Chair of the Nukunu Aboriginal Corporation. This conference brought together more than 200 rangers from the 29 Indigenous ranger groups across SA.
- General Manager Will Durack, presented at a series of Invasive Species Council strategy briefings entitled ‘*Standing up for Nature*’. The briefings were held in Sydney, Melbourne and online to donors and philanthropic entities.
- 16 media articles were published, including one in New Zealand. 10 News covered the programs search for extra funding and one radio interview was undertaken.

16
national and state-wide
media articles produced

1
segment on television
news aired

Funded by:

- Australian Government:
 - » Supporting Communities Manage Pest Animals and Weeds
- Government of SA
 - » Landscape Priorities Fund
- Ian Potter Foundation
- Purryburry Trust
- Jaramas Foundation
- Kangaroo Island Landscape Board
- Members of the public

Future directions and upcoming events:

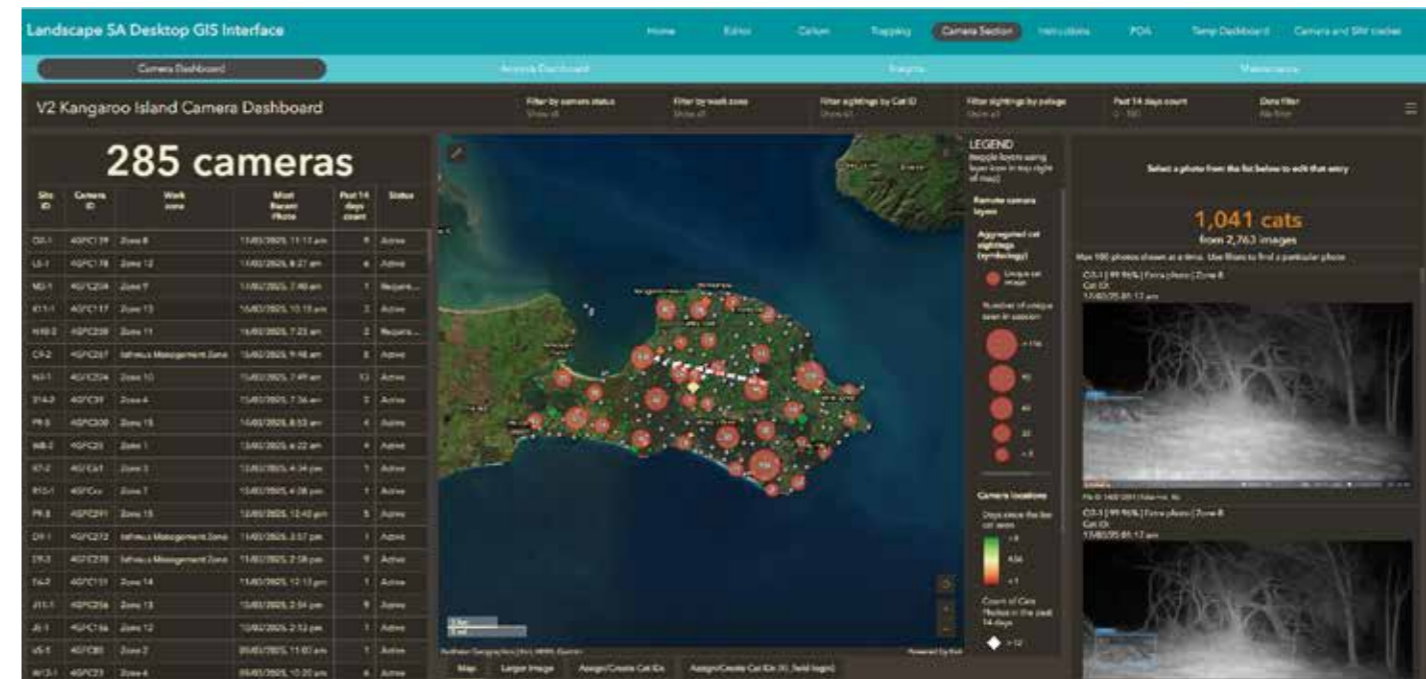
- This year our winter knockdown program will commence on April 27. It aims to reduce the feral cat population on the Dudley Peninsula by 95%.
- The Board is continuing to work with the Invasive Species Council, the Government of South Australian and philanthropic partners to leverage the remaining \$3.1 million needed to complete the second and third years of the eradication program.
- The eradication team is running an event on 26 May for the Dudley community and landholders in the lead up to the start of the landholder-led trapping program in July. The event will introduce new team members and the latest technology being applied by the program to the Dudley community. The Penneshaw Progress Association is co-hosting the event with the Board.

Image far left: Feral Animal Control Officer Brenton Florance with a thermal drone used to detect feral cats at night.

Image centre left: A feral cat detected with the thermal drone.

Image below: The dashboard below combines data from the feral cat traps across the Dudley Peninsula, the remote cameras and field staff, to direct eradication efforts.

Call in a cat
on the Dudley Peninsula
0459 952 830



Sustainable Agriculture Program

Overview:

The Board recognises the ongoing land stewardship undertaken by the Island's agricultural community. This program promotes and supports the adoption of evidence based sustainable land management practices that generate productivity gains and positive environmental outcomes.

Key achievements in community engagement

January–March:

- Continued implementation of the KI Integrated Farm Planning / Property Management Planning (PMP) program.
 - Delivered the Natural Sequence Farming / water planning workshop with Adrian Drew on 24 February 2026, combining theory with field-based application to 23 participants.
 - Worked one-on-one with individual participants on their Property Management Plans, helping them clarify priorities, identify gaps and progress practical next steps for their properties. This is strengthening participant engagement by helping landholders work through their own property issues in a more personalised way.
 - Supported participants to connect workshop content and technical information back to their own businesses through individual follow-up and planning support.
 - Used both workshops and one-on-one discussions to reinforce that property management planning is relevant across a wide range of farm sizes, enterprises and decision-making stages.
 - Continued building connections between participants and specialist advisors in areas such as water management, soils, land assessment and decision-making.
- A workshop entitled *Envisioning the Future* was attended by 22 female farmers on 29 January 2026.
 - Jasmin Piggott, a crop farmer, native flower grower and community leader from Miltalie, explored what's coming, where the opportunities are, and how to feel confident about the future.
 - Alex Comino, Carbon Outreach Officer, explained carbon farming and low-emissions farming practices and discussed potential changes to agriculture and export markets over the next five years in Australia.

5
workshops hosted or supported

2
carbon farming webinar sessions held

Links to KI Landscape Plan

- A connected community at the centre of decision making
- Sustainable primary production and the island's economy

Funded by:

- Australian Government:
 - Future Drought Fund
 - Carbon Farming Outreach Program
 - Natural Heritage Trust, Climate-Smart Agriculture Program
- Government of South Australia:
 - Landscape Priorities Fund

81
people attended workshops

- A *Beginners guide to carbon farming* workshop was held on 12 February 2026. The five participants received clear and locally relevant information on carbon farming and low-emissions practices, including carbon footprints, emissions intensity, and opportunities for generating carbon credits within farming systems.
- A *Genetics, eID & Carbon-Smart Breeding for KI sheep producers* workshop, was held on 13 February 2026 at Ella Matta.
 - The 17 participants gained a theoretical and practical understanding of how genetics and electronic identification systems can improve livestock productivity and inform on-farm decision-making.
- A webinar series was delivered to support producers and land managers to better understand carbon farming and its implications for farm businesses. Sessions explored industry perspectives on emissions reporting, fertiliser management, and genetic efficiency for reducing farm emissions. Two sessions were held on 23 and 26 of February 2026.
- An *AI Tools & Tech session* was delivered on 30 March 2026 in collaboration with the Australian Regional Artificial Intelligence Network (ARAIN).
 - The session introduced the 14 participants to practical applications of AI tools for farm record keeping, data processing, and decision support, with a focus on improving efficiency and decision-making in farming systems.

Future directions and upcoming events:

- Continue working with individual PMP participants so they can keep building and applying their plans over time.
- Deliver the *Understanding Your Land* workshop to be presented by David Hardwick in April, with a focus on understanding land capability, soils and management constraints.
- Keep linking participants with one-on-one and small-group specialist support to help them act on priorities identified through the PMP process.
- Undertake autumn Visual Soil Assessments across demonstration sites on Kangaroo Island and continue follow-up engagement with landholders to support the application of feed budgeting and livestock genetics management practices.

Image previous page far left: Participants at the *Envisioning the Future* workshop.

Image previous page right: Property Management Planning participants at the *Natural Sequence Farming* workshop.

Image below left: Participants at the *AI Tools and Tech* workshop.

Image below right: Participants at the *Genetics, eID & Carbon-Smart Breeding for KI sheep producers* workshop.



Kangaroo Island Habitat Recovery Project

Overview:

This project supports landholders to improve the condition of Kangaroo Island's natural environment through native vegetation protection and restoration works with a focus on threatened ecological communities and critical habitats.

Key achievements January–March:

- Four landholders constructed 8.9 km of fencing to protect a combined 38.5 ha of KI Narrow-leaved Mallee and other mixed mallee Woodland as part of on-ground works projects.
- An initial analysis of spring fauna survey data was undertaken as part of the restoration monitoring project. Cameras recorded 2,038 detections of 26 different fauna species during their 50-day deployment at the five revegetated sites and five sites in remnant native vegetation near by. These data will be compared to results from previous autumn surveys to determine the effectiveness of habitat restoration works.
- Priority weed control is currently underway targeting olives and other woody weeds encroaching on threatened plant populations throughout MacGillivray, Haines and Dudley. So far, over 500 plants from ten different weed species have been controlled. The majority of plants controlled have been olives (*Olea europaea* ssp.) and sweet pittosporum (*Pittosporum undulatum*).

Community engagement:

- Site inspections were conducted for four completed on-ground works projects and another project currently being delivered. Another six fencing projects are due to be completed before the start of June.
- General vegetation management advice relating to KI Narrow-leaved Mallee Woodland was provided to three landholders. Two of these landholders are looking to apply for on-ground works funding when it is next available.
- Vegetation clearance advice was given to one landholder relating to property access.

Future directions and upcoming events:

- On-ground works site visits will be undertaken as projects are completed by landholders.
- Priority weed control will continue throughout MacGillivray, Haines and Dudley.
- Bioacoustics recorder bird survey data will be analysed from the restoration monitoring project. This requires the use of specialised software to extract unique sound files. Similar sound files are then grouped and can then be attributed to a particular bird species based on the call.
- The establishment of roadside barriers to protect critical populations of threatened plant species will be finalised. Information signs are currently being designed and negotiations with KI Council and Department for Infrastructure and Transport (DIT) will be progressed regarding approvals for their construction at several roadside locations.

Image right: Measuring differences in biodiversity between older revegetation and remnant native vegetation near by.

38.5
ha KI Narrow-leaved
Mallee woodland
protected

26
different species detected
in previously revegetated
habitat

Links to KI Landscape Plan

- A connected community at the centre of decision making
- Healthy terrestrial and marine ecosystems and biodiversity

Funded by:

- Kangaroo Island Landscape Board
- Government of South Australia
 - » Landscape Priorities Fund
- Australian Government
 - » Saving Native Species – Priority Places



Kangaroo Island Native Plant Nursery

Overview:

The Kangaroo Island Native Plant Nursery grows over 150 different species of KI native plants, which can be used for revegetating land, windbreaks, coastal plantings and home garden use. The Nursery Manager is available for native vegetation management advice to assist landholders with their projects.

Key achievements January–March:

- Finished transplanting seedlings for 2026 and weeding and thinning stock.
- Confirmed orders to grow approximately 31,000 plants for private landholders and KI Landscape Board project orders in 2026-27.
- Unwanted chemicals removed from chemical shed.
- Commenced batching orders for collection for the 2026 planting season.
- Continued collecting seed to replenish the seed bank.
- Collated late orders using spare stock.

Community engagement:

- Conducted site visits with landholders and community groups to assist with their revegetation projects.
- Volunteers donated approximately 50 hours at the nursery transplanting seedlings, washing pots, and trimming plants.
- Assisted Friends of Parks Western Districts with seed cleaning and storage.

Future directions and upcoming events:

- Continue seed collecting to replenish the seed bank.
- Continue entering data into seed bank data base.
- Consolidate species and batch orders for 2026.
- The nursery will be open to the public on Tuesdays and Thursdays from May 6 until August.

Image: KI Native Plant Nursery Manager, Jo McPhee, amongst the native plants she has grown ready for planting this winter.



31,000
plants ordered
for 2026

50
hours given to the
nursery by volunteers

Links to KI Landscape Plan

- A connected community at the centre of decision making
- Healthy terrestrial and marine ecosystems and biodiversity
- Sustainable primary production and the island's economy

Funded by:

- Kangaroo Island Landscape Board
- Foundation for National Parks and Wildlife
- Members of the public

Kangaroo Island Woodland Bird Recovery Project

Overview:

This project will deliver strategic on-ground management actions to assist the recovery of key woodland bird species post-fire. Actions will include revegetation for priority woodland bird species, habitat augmentation through the installation and maintenance of nest boxes, pest management to control species that invade tree hollows, and monitoring of key species in partnership with the local community.

Key achievements January–March:

- Data from 2020–2025 was assessed to determine areas where nest boxes are limited for glossy black-cockatoos, and where KI crimson rosellas are using glossy nest boxes. Once prioritised and physically assessed, suitable trees were selected at four sites and nest boxes were installed or constructed there. A mixture of nest boxes were used as follows:
 - » one glossy nest box was installed in Kangaroo Gully, western KI
 - » two glossy PVC nest boxes were installed at Cygnet River
 - » one glossy PVC nest box was installed and two crimson rosella nest hollows were drilled and installed using the HollowHog tool at Middle River Gorge
 - » one glossy PVC nest box was installed and two crimson rosella nest hollows were drilled and installed using the HollowHog tool at Middle River.
- Pest management at nest hollows continued. Where needed tree collars were checked and repaired, tree canopies pruned to keep nesting trees isolated; feral bee hives removed and where required preventively sprayed.
- Monitoring breeding glossies began in February. Initial monitoring indicates 2026 is shaping up to be a more productive breeding season than 2025. During 2025 we recorded the lowest number of nesting attempts and fledglings in 15 years. It is thought this was due to dry conditions in 2024 reducing sheoak cone production across KI.

Community engagement:

- The results of the [2025 glossy black-cockatoo census](#) were published.

Future directions and upcoming events:

- Infill planting at Latham Conservation Park in winter 2026 to replace any seedlings that died over summer.
- Funding has been secured through the Government of SA Landscape Priorities Fund to build and trial insulated glossy nest boxes in burnt areas to combat the effects of hot weather during egg laying in February and March.

Image right: Torran Welz, Glossy black-cockatoo Field Officer, using the HollowHog tool to create a KI crimson rosella nest hollow.

9
glossy nest boxes
installed & protected

1
glossy black-cockatoo
census report published

Links to KI Landscape Plan

- A connected community at the centre of decision making
- Healthy terrestrial and marine ecosystems and biodiversity

Funded by:

- Kangaroo Island Landscape Board
- Government of South Australia
 - » Landscape Priorities Fund
- Australian Government
 - » Saving Native Species – Priority Places



Kangaroo Island Habitat for Biodiversity Project

Overview:

This project will synthesise baseline and post-fire recovery biodiversity project datasets collected as part of the KI Dunnart Recovery Program and continue to build on those datasets for target species through re-surveying long-term monitoring sites seasonally during spring and autumn.

Key achievements January–March:

- Seventy long term monitoring sites were surveyed for the ninth time across western KI to capture fauna activity during spring between September 2025 and January 2026 using remote cameras with a drift-line fence.
 - » The surveys detected KI dunnarts 197 times, southern brown bandicoots nine times, KI short-beaked echidnas 181 times, pygmy possums 326 times, Rosenberg goannas 125 times and feral cats 111 times.
 - » These on-going surveys, which began in 2020, continue to build on and add value to the existing data, which is helping to detect changes in the abundance of species over time since the 2019-20 bushfires.
 - » For example since feral cat control finished on western KI in 2023 the numbers of southern brown bandicoots has steadily declined.

Community engagement:

- Hannah Byrne-Willey's great work delivering this project was celebrated as part of the International Day of Women and Girls in Science in [local and statewide media](#).

Future directions and upcoming events:

- Host a KI Community Education (KICE) Young Environmental Leaders (YEL) field day in May focussing on trapping KI dunnarts using artificial refuges.

Image below: Hannah Byrne-Willey, Biodiversity Project Officer setting up a remote camera for the recent fauna survey.



70
sites surveyed
for 9th time

9
southern brown
bandicoot detections

Links to KI Landscape Plan

- A connected community at the centre of decision making
- Healthy terrestrial and marine ecosystems and biodiversity

Funded by:

- Kangaroo Island Landscape Board
- Australian Government
 - » Saving Native Species – Priority Places

Improving Coastal Habitats Project

Overview:

This project will undertake actions to improve the quality of habitat for Kangaroo Island's priority coastal species through habitat augmentation, protection and revegetation. Key coastal habitats and threatened species will also be monitored to provide information and direction for current management actions, with a focus on the Board's newly constructed native flat oyster (*Ostrea angasi*) reefs and little penguin (*Eudyptula minor*) colonies.

Key achievements January–March:

- Water samples were collected each week for the Environment Protection Authority (EPA) Harmful Algal Bloom (HAB) Water Testing Program.
- A Clean Up Australia Day coastal event was held on 17 March with KI Landscape Board staff. Four teams collected rubbish from Min Oil Beach, Boxing Bay, Emu Bay and Brownlow Beach. The rubbish was categorised and recorded and reported to Clean Up Australia for inclusion in their annual litter report.

Community engagement:

- 23 year 5 Young Environmental Leader KICE students and nine year 11 and 12 Outdoor Education students helped refurbish little penguin burrows on 18 and 19 March 2026. They were joined by Board staff and volunteers from the Burnside Rotary Club.
 - » Old and unserviceable timber boxes were removed from the Kingscote coastline, where the breeding population has fallen considerably over the last couple of decades, and moved to Emu Bay, currently KI's largest and expanding colony.
 - » Students then built new A-frame and insulated roofs which they attached to the boxes to improve thermal regulation and waterproofing. The 17 renovated timber boxes were installed in the north-western end of the Emu Bay colony where little penguin breeding activity is expanding, but limited by a lack of suitable shelter.
- These artificial burrows will provide nesting opportunities for penguins, while revegetation planted by the Board in 2025 grows to provide natural shade and protection for little penguins and other coastal birds in the future.

Future directions and upcoming events:

- The hooded plover breeding season finishes in autumn. When over, Board staff will help collect any remaining temporary fences, signs and/or chick shelters from breeding beaches.



17
refurbished little penguin nest boxes installed

1
Clean Up Australia Day event held

Links to KI Landscape Plan

- A connected community at the centre of decision making
- Healthy terrestrial and marine ecosystems and biodiversity
- Effective terrestrial and marine pest management

Funded by:

- Kangaroo Island Landscape Board
- Australian Government
 - » Saving Native Species – Priority Places

Image below: KICE Outdoor Education students working with Burnside Rotary Club volunteers to refurbish little penguin nest boxes at Emu Bay.

Environmental Education Program

Overview:

This project is partnering with the local school KI Community Education (KICE), to develop and implement a free environmental education program embedded in the Australian (R-10) and SA (11-12) curriculum.

Key achievements in community engagement

January–March:

- Developed and updated material for KICE teachers including a KI bird educator resource and the [KI teacher resource pack for 2026](#) and updated the [KI education equipment and loan catalogue](#).
- Promoted the SA Youth Environmental Council to the 2026 year 8 students. Eight KICE kids were selected to participate.
- Initiated the 2026 intake of year 5 students into the KI Young Environmental Leaders (YEL) program. 25 applicants were selected to participate in the 2026 YEL program.
- The first term YEL forum was held on 18 March at Emu Bay. 23 YEL students worked with KI Landscape Board staff and volunteers from the Burnside Rotary Club to refurbish and install little penguin nest boxes.
- The KI Environmental Education Coordinator met weekly with a designated KICE teacher to plan for curriculum connections. This term a freshwater ecology unit for year 7 science students is being developed.
- Fostered and supported relationships between KICE Outdoor Education students and Friends of Parks KI Western Districts.

Future directions and upcoming events:

- Planning for the term 2 YEL forum focussing on small mammals to be delivered in May.
- Continue to work closely with KICE in developing unit plans. Term 2 focus will continue the water theme but align with year 4 science.
- Draft the next educator resource focussing on fungi.
- Support school world environment day celebrations.
- Support Parenting KI school holiday event.

Images below: KICE YEL students working with Deb Laver, Education Coordinator and Alex Comino, Coasts Project Officer to refurbish and install little penguin shelters at Emu Bay.



25
new year 5 YEL students selected for 2026

3
educator resources developed and updated

Links to KI Landscape Plan

- Effective water management
- A connected community at the centre of decision making
- Healthy terrestrial and marine ecosystems and biodiversity
- Sustainable primary production and the island's economy

Funded by:

- Government of South Australia
 - » Landscape Priorities Fund

Communications and media

Overview:

This project provides professional communication services, processes, advice and support to the Board, General Manager and project staff. All work is in line with the Board's priorities and direction and tailored to the community and national/international audiences through targeted messaging and communication methods.

Key achievements January–March:

1. Media

1.1 Local media: Twelve articles were published in the media over the quarter:

- 15/1/26: [Glossy black-cockatoo numbers hold strong, eastern expansion takes off](#)
- 30/1/26: [KI Landscape Board holds Ladies Day Luncheon at Springs Road Winery](#)
- 2/2/26: [Kangaroo Island community invited to comment on final draft Landscape Plan](#)
- 3/2/26: [Landscape Board preparing technical report on little corella numbers](#)
- 5/2/26: [KI Landscape Board, AgKI offer free on-farm genetics, carbon workshop](#)
- 6/2/26: [Women in science driving wildlife recovery after KI bushfires](#)
- 17/2/26: [Crop grower, sheep producer backs efficiency to cut costs – not outputs](#)
- 24/2/26: [Invasive Species Council makes flying visit to KI's cat exclusion fence](#)
- 5/3/26: [State government commits \\$800,000 to eliminating KI's feral cats](#)
- 13/3/26: [Free workshop: How AI can help Kangaroo Island farmers](#)
- 27/3/26: [Free carbon farming webinar: Boost productivity, cut emissions](#)
- 28/3/26: [New trial tests humane method to manage little corellas on KI](#)

1.2 Radio: Four interviews were given to radio:

- 4/2/26 ABC The World Today: [Kangaroo Island cockatoos back from brink](#)
- 19/2/26 ABC North-West: Jasmin Piggott, guest at the KILB carbon workshop Ladies Day Lunch interviewed
- 19/2/26 ABC North-West: [Dr Karleah Berris was interviewed about the results of the 2025 black-cockatoo survey](#)
- 18/3/26 ABC North-West: [Invasive Species Council CEO Jack Gough calls for funding for feral cat eradication on KI](#)

1.3 One book, 23 articles and two videos were published in state, national and international media:

- 8/1/26 book: [Cats on every continent](#): Feral cat eradication team interviewed by international author and journalist Jamie Lafferty
- 17/1/26 Glam Adelaide: [Glossy black-cockatoos bounce back, with new census revealing strong signs of recovery on Kangaroo Island](#)
- 5/2/26 ABC News: [Fears SA's endangered glossy black-cockatoo eggs will 'cook' in nesting boxes during heatwave](#)
- 5/2/26 ABC News 24 (TV): Dr Karleah Berris interviewed about 2025 Glossy black cockatoo survey
- 10/2/26 InDaily: [Health fears for kids at KI school battling thousands of birds](#)
- 11/2/26 We Are SA: [Science in action: Meet the women shaping our landscapes](#)
- 25/2/26 The Stock Journal: [Sap testing helping make cost-effective decisions to support grain growth](#)
- 3/3/26 Channel 10 National News: [Calls for funding to remove final feral cats from Dudley Peninsula](#)

28
social media posts viewed
by 196,900 people

12
media articles published
locally

Links to KI Landscape Plan

- A connected community at the centre of decision making
- Healthy terrestrial and marine ecosystems and biodiversity
- Sustainable primary production and the island's economy
- Effective water management
- Effective terrestrial and marine pest management

- 17/3/26 Murray Pioneer: Free carbon farming webinars offered to primary producers
- 15/3/26 The Advertiser: [KI a whisker away from cat-free win – but real test is just starting](#)
- 15/3/26 The Daily Telegraph: [Final 150 feral cats stand between Kangaroo Island and a world-first victory](#)
- 15/3/26 The Herald Sun: [Final 150 feral cats stand between Kangaroo Island and a world-first victory](#)
- 15/3/26 The Mercury: [Final 150 feral cats stand between Kangaroo Island and a world-first victory](#)
- 15/3/26 NT News: [Final 150 feral cats stand between Kangaroo Island and a world-first victory](#)
- 19/3/26 ABC News: [Kangaroo Island considers introducing 'last cat policy' in bid to eradicate feral cats](#)
- 19/3/26 news.com.au: [Kangaroo Island Council proposes total cat ban amid fight to eradicate feral predators](#)
- 19/3/26 Yahoo News Australia: [Aussie council declares war on feral cats](#)
- 19/3/26 The Western Australian: [Kangaroo Island Council proposes total cat ban amid fight to eradicate feral predators](#)
- 19/3/26 Sky News: [Kangaroo Island Council proposes total cat ban amid fight to eradicate feral predators](#)
- 19/3/26 The Australian: [Kangaroo Island Council proposes total cat ban amid fight to eradicate feral predators](#)
- 19/3/26 The Daily Telegraph: [Kangaroo Island Council proposes total cat ban amid fight to eradicate feral predators](#)
- 19/3/26 The Herald Sun: [Kangaroo Island Council proposes total cat ban amid fight to eradicate feral predators](#)
- 19/3/26 Courier Mail: [Kangaroo Island Council proposes total cat ban amid fight to eradicate feral predators](#)
- 19/3/26 The Mercury: [Kangaroo Island Council proposes total cat ban amid fight to eradicate feral predators](#)
- 19/3/26 RNZ (New Zealand): [Kangaroo Island considers introducing 'last cat policy' in bid to eradicate feral cats](#)

2. Social media

- 28 KI Landscape Board Facebook posts viewed by 196,900 people.
 - » The Facebook post about the KI Glossy Black-cockatoo Program was viewed by 51,150 people.
- Five video recordings of free [carbon farming webinars](#) were published on the KI Landscape Board YouTube channel.

Community engagement

- Two *Growing KI* e-newsletters were sent to more than 540 people in [February](#) and [March](#).
- Fifteen new [digital factsheets](#) on Kangaroo Island's 15 Priority Weeds published on the KILB website.

Future directions and upcoming events:

- Community communication and media coverage to support the 2026 feral cat winter blitz and ongoing funding for the program.
- National promotion of KI dunnart and small mammal program to support ongoing funding for the program.
- Promotion of plants and services available at the KI Native Nursery, the Board's Grassroots Grants and On-ground Works programs and media coverage of the little penguin 2025 survey.
- Community communications of critically endangered beyeria bush pea at Elsegood Road, weed management, last feral pig policy on KI and biosecurity on KI.
- Refresh KI Landscape Board website.

26
articles in state, national &
international media

4
radio interviews
given

Funded by:

- Kangaroo Island Landscape Board
- Australian Government
- Government of South Australia:
 - » State Appropriations

Planning and Evaluation Team

Overview:

This team works with all KI Landscape Board projects to support their effective and efficient delivery and to assist them to meet their reporting responsibilities. The team also coordinates the KI Landscape Board's strategic planning, including evaluating performance towards implementing the KI Landscape Plan.

Key achievements January–March:

- Five output reports were submitted to the Australian Government through their on-line reporting tool (MERIT).

Community engagement:

- The Plan's final draft was open for a statutory six-week public consultation period from 1 February to 15 March 2026, as required under the *Landscape South Australia Act 2019*. This was the final opportunity for public comment before the Plan was endorsed by the Board and submitted to the Minister.
 - » In total, 89 comments were received from 11 responding organisations and individuals. Most comments did not require material changes to the plan, three noted strategic alignment with their own work, and others requested minor wording adjustments which were made where suitable.
 - » Feedback indicated broad support for the Plan, including the new priorities and focus areas. This reflects the effectiveness of early and iterative engagement. Overall there was broad support for the plan. Particular mention was given to:
 - The Board's NRM Education program.
 - Continuing to support existing partnerships, and forging new collaborations with other organisations.
 - Promoting and enabling opportunities for volunteerism.
- A successful two day tour of the Board's biodiversity-focussed activities and the feral cat eradication program was given to Government of SA representatives from the Landscapes Partnerships Team.
- Project staff were assisted with communications and media to develop posters, web pages, media articles, factsheets, newsletters and flyers for KI Landscape Board projects.

Future directions and upcoming events:

- Assist projects with reporting and monitoring requirements and liaise with the Australian and South Australian governments and project staff to meet contracted requirements for projects.
- Continue to support the Ngarrindjeri, Kurna and Narungga Aboriginal Nation Groups to undertake a Country Planning process for KI.
- Seek funding to continue KI Landscape Board project work.
- Develop consultation report and final draft Landscape Plan 2026–2031 for submission to the Minister for Climate, Environment and Water.

Image right: A participant selecting their priorities for the Board at the Kingscote Show.

Community grants programs

Overview:

The Kangaroo Island Grassroots Grants program supports KI individuals, volunteers, community groups and other not-for-profit organisations, with local landscape management projects.

Key achievements January–March:

- A landholder in Middle River fenced off three patches of old growth sugar gum, stringybark and pink gum remnant native vegetation and planted 300 native plants within them to protect them from stock with support from KI Eco-Action and KI Land for Wildlife. 20-minute standardized bird surveys were also undertaken over 2 hectares and photopoints were established to monitor the revegetation,
- Preparations were undertaken to support the opening of the 2026-27 Grassroots Grants on 1 April 2026.

Future directions and upcoming events:

- Seek applicants for the 2026-27 KI Grassroots Grants and coordinate the assessment process.
- Support KI Grassroots Grants participants and applicants with their projects.

Images below: Revegetation to protect sugar gum, stringybark and pink gum remnant native vegetation in Middle River (Caroline Paterson).



300
native plants planted

3
remnant vegetation patches protected

Links to KI Landscape Plan

- A connected community at the centre of decision making
- Healthy terrestrial and marine ecosystems and biodiversity
- Sustainable primary production and the island's economy
- Effective water management
- Effective terrestrial and marine pest management

Funded by:

- Kangaroo Island Landscape Levy
- Government of South Australia:
 - » State Appropriations



How we can help you



KI Native Plant Nursery

- » local native plants
- » growing, planting and revegetation advice suited to KI soils and climate
- » plant identification

Contact Jo McPhee
0437 322 692
jo.mcphee@sa.gov.au



KI native vegetation

- » advice on how to manage KI native vegetation
- » grants available to protect and revegetate KI native vegetation

Contact Kym Lashmar
8553 2476
kym.lashmar@sa.gov.au



Soil Extension Officer

- » assist with agricultural pests and weeds, growing and monitoring soil health and plant nutrition, grazing management, feed budgeting, using biological stimulants and fertilisers

Contact Cassandra Douglas-Hill
0402 107 167
cassandra.douglas-hill@sa.gov.au



Water management

- » advice on water affecting activities and permits e.g. dams and earth works in or near a water body
- » advice on water resources e.g. salinity, wells

Contact Phoebe Edwards
0477 013 051
phoebe.edwards@sa.gov.au



Weed control

- » weed management advice
- » weed identification
- » reports of new weeds
- » hire of cape tulip weed wiper

Contact Jason Walter
0418 708 557
jason.walter@sa.gov.au



Pest animal control

- » domestic goat and pig permits
- » feral pig, goat and deer reports

Contact Brenton Florance
0427 618 304
brenton.florance@sa.gov.au



Sustainable Agriculture Facilitator

- » soil monitoring and soil health
- » demonstration and trial sites
- » shelter belts and revegetation
- » sustainable land management

Contact Joaquin Pillado
0437 172 877
joaquin.pillado@sa.gov.au



Feral cat control

- » control of feral cats
- » feral cat trap hire

Contact Paul Jennings
8553 2476
paul.jennings@sa.gov.au