

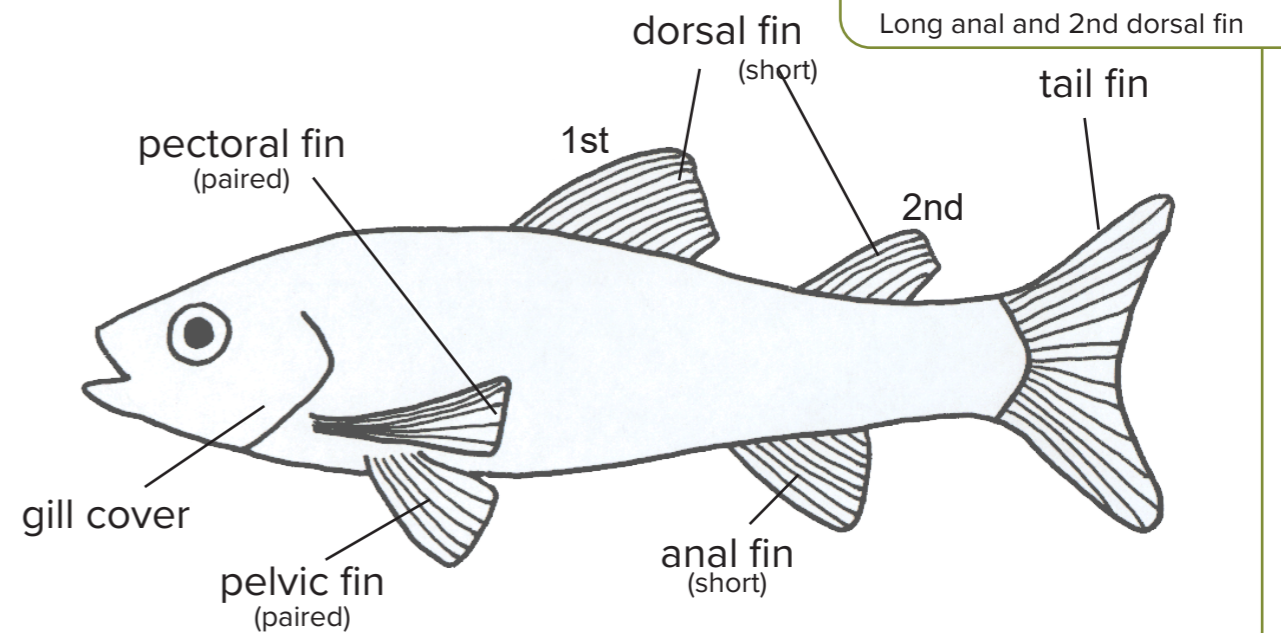
Kangaroo Island Freshwater Fish and Crustacean Key

1	Crustacean Fish	→ 2 → 3
2	The rostrum (head) is broad and blunt and cheliped (claws) short, broad and tuberculate (surface of shell) Rostrum (head) generally longer, more pointed and narrow. Usually darker to blue in colour	Yabby Marron
3	Fish longer than 15cm Fish shorter than 15cm	→ 4 → 8
4	Has paired fins (pelvic and/or pectoral fins) No paired fins... → pouch under head → no pouch under head Or a	Pouched lamprey (male) Pouched lamprey (female) Short-headed lamprey
5	Single dorsal fin (connecting tail and anal fins to form a single, ribbon-like fin) One dorsal fin Two dorsal fins	Shortfin eel → 6 → 7
6	Forked tail with spiny rays present in front section	Black Bream
7	First dorsal fin short → and pink stripe alongside and gill cover → and no pink stripe along side	Rainbow Trout* Brown Trout*
8	One dorsal fin Two dorsal fins	→ 9 → 10
9	Dorsal fin further from nose than anal fin Dorsal fin and anal fin same distance from nose Dorsal fin closer to nose than anal fin	Mosquito fish* Common galaxias Climbing galaxias
10	Long anal and second dorsal fin Short anal and second dorsal fin	→ 11 → 12
11	Long narrow body with dark blotches	Congolli
12	Forked tail, stripe down side of body Tail rounded or truncate (square or triangular shape)	Small-mouthed hardyhead → 13

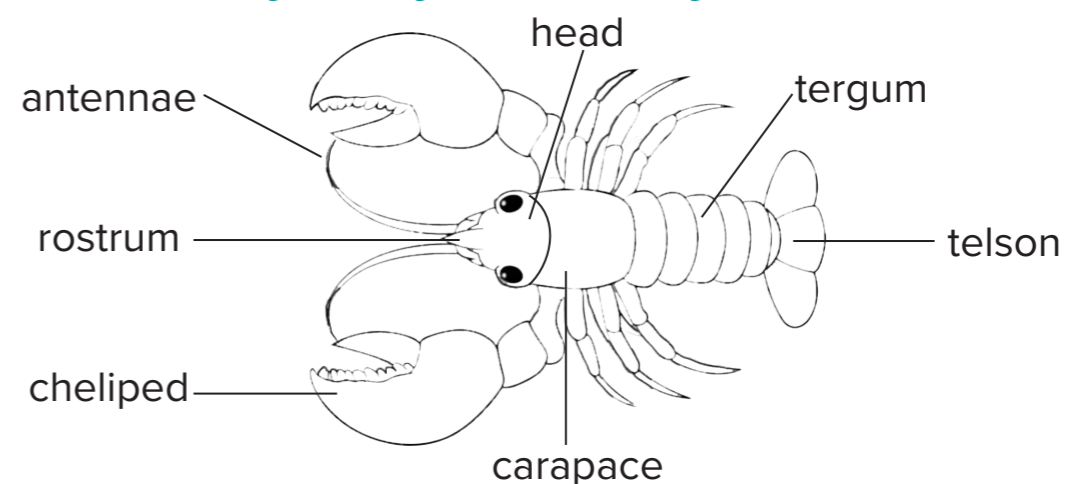
13	Pelvic fins fused to form a disc-like sucker, used for attaching to surfaces Pelvic fins not fused, separate	→ 14 → 15
14	Iridescent blue spots Distinct bridle-like lines on head and sometimes a broad stripe along body	Blue-spot goby Bridled goby
15	Broad, distinctly flattened head, more rounded tail, dorsal fins larger and more distinctly separated. Stronger markings, dark spot at base of tail	Flathead gudgeon

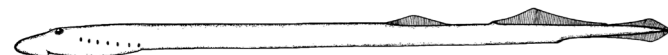
*non-native

General fish anatomy



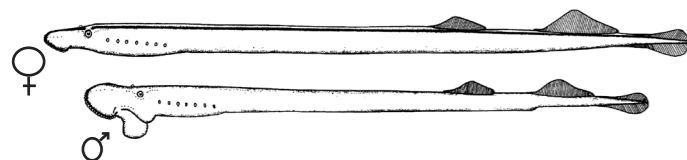
General yabby anatomy





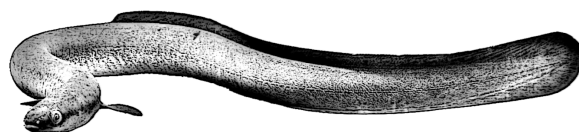
Short-headed Lamprey

Mordacia mordax
40-50cm, max. 80cm



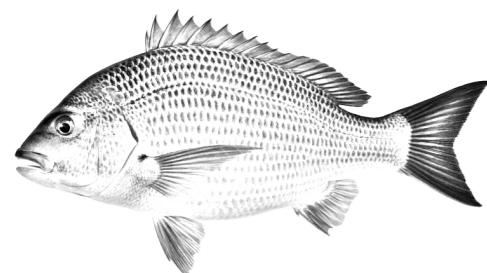
Pouched Lamprey

Geotria australis
30-40cm, max. 70cm



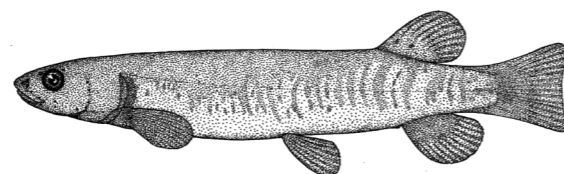
Shortfin eel

Anguilla australis australis
45-70cm, max. 1.3m



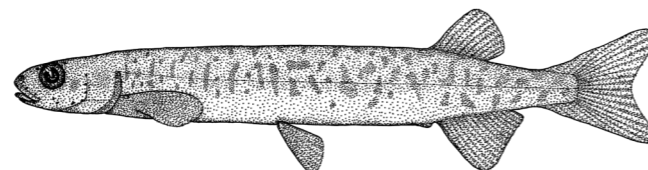
Black bream

Acanthopagrus butcheri
23-35cm, max. 60cm



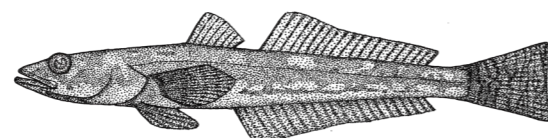
Climbing Galaxias

Galaxias brevipinnis
8-12cm, max. 22cm



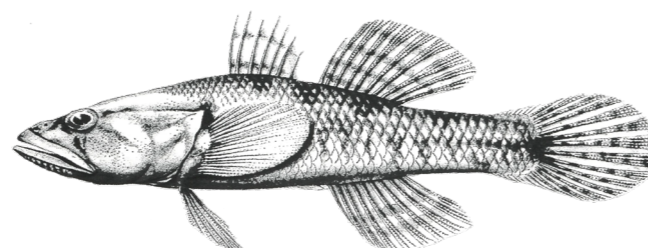
Common Galaxias

Galaxias maculatus
6-10cm, max. 19cm



Congolli

Pseudaphritis urvillii
10-15cm, max. 34cm



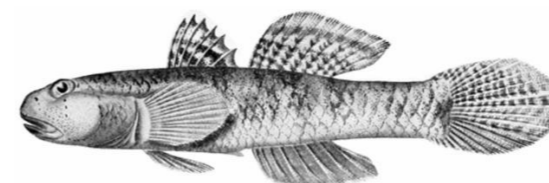
Flathead Gudgeon

Philypnodon grandiceps
5-6cm, max. 12cm



Yabby

Cherax destructor
10-20cm, max. 30cm



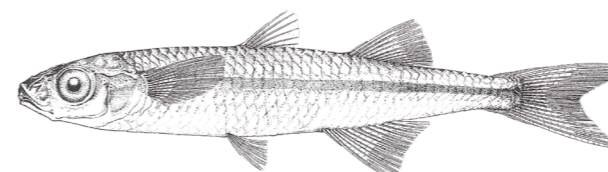
Bluespot Goby

Pseudogobius olorum
4-4.5cm, max. 7.6cm



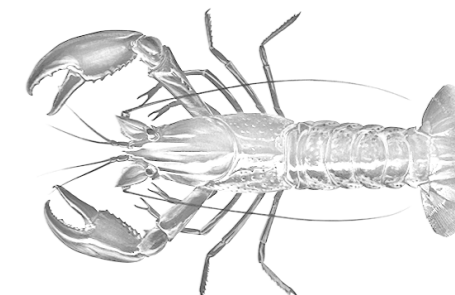
Bridled Goby

Arenigobius bifrenatus
9-15cm, max. 18cm



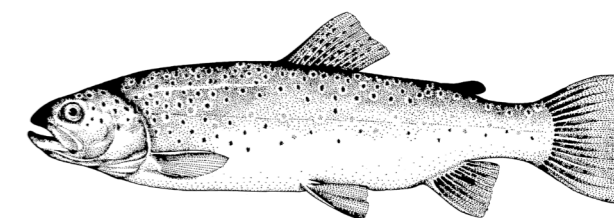
Small-mouthed Hardyhead

Atherinosoma microstoma
4-5cm, max. 8cm



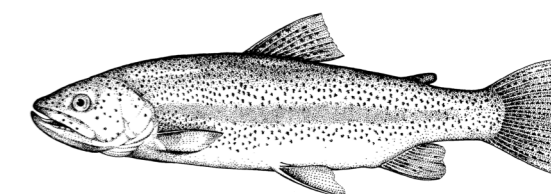
Marron

Cherax tenunanus
17-21cm, max. 40cm



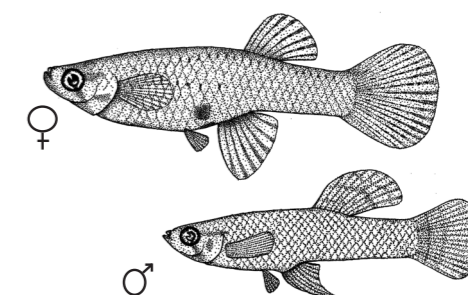
Brown Trout*

Salmo trutta
max. 90cm



Rainbow Trout*

Oncorhynchus mykiss
30-40cm, max. 80cm



Eastern mosquito fish*

Gambusia holbrooki
Female max. 6cm, Male max. 3.5cm

*non-native

Illustrations from McDowall, R. (1996), *Freshwater Fishes of South-Eastern Australia* (Reed Books)

Information from:

- Kangaroo Island Natural Resources Management Board. 2006. *Rivers of Life— Technical background to water management planning on Kangaroo Island.*
- Kangaroo Island Natural Resources Management Board. 2017. *Kangaroo Island migratory fish assessment*
- Green Adelaide.