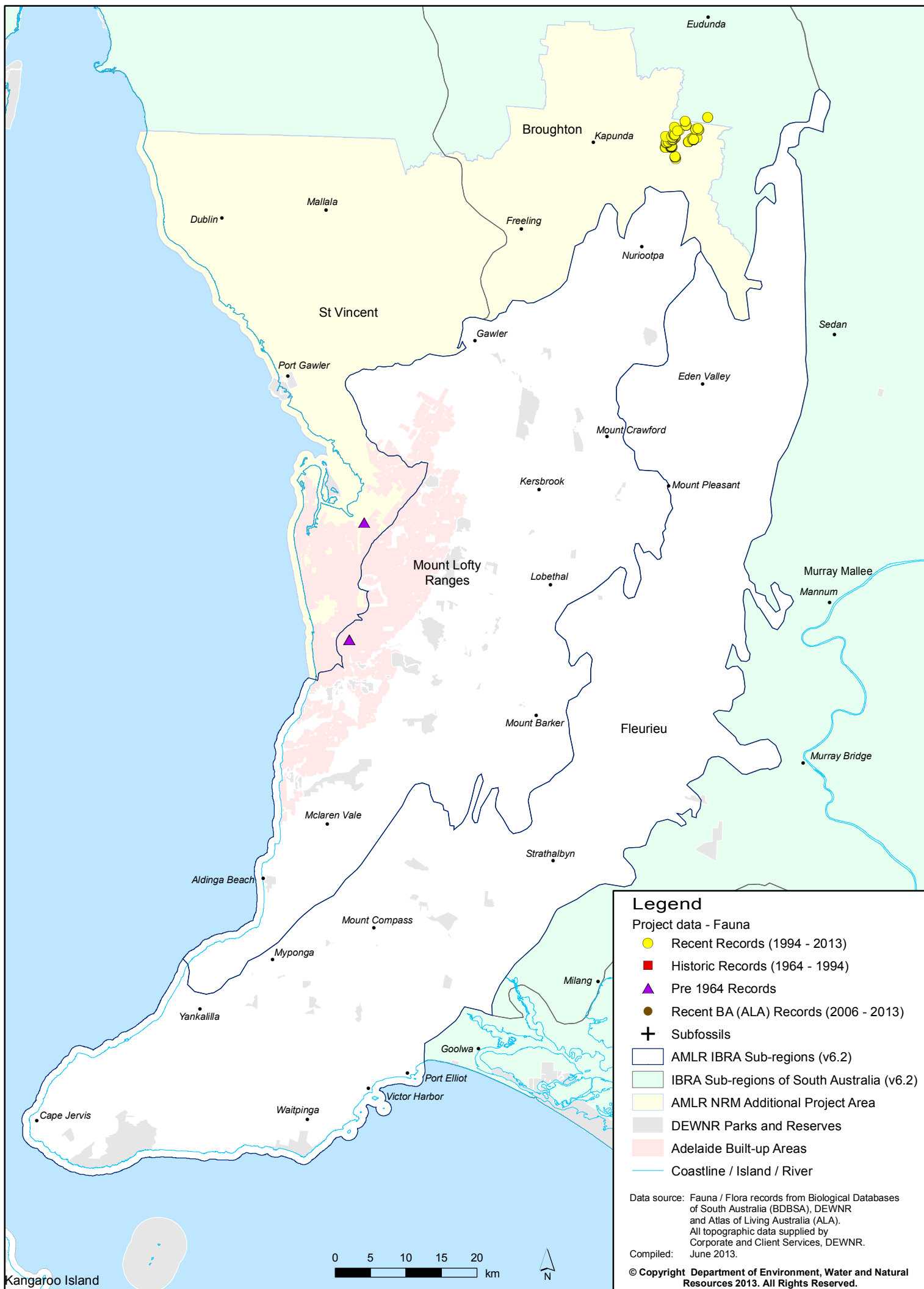


396 REPTILIA *Tiliqua adelaidensis* (Pygmy Bluetongue)



Legend

Project data - Fauna

- Recent Records (1994 - 2013)
- Historic Records (1964 - 1994)
- ▲ Pre 1964 Records
- Recent BA (ALA) Records (2006 - 2013)
- ⊕ Subfossils

IBRA Sub-regions of South Australia (v6.2)

- AMLR IBRA Sub-regions (v6.2)
- IBRA Sub-regions of South Australia (v6.2)
- AMLR NRM Additional Project Area
- DEWNR Parks and Reserves
- Adelaide Built-up Areas
- Coastline / Island / River

Data source: Fauna / Flora records from Biological Databases of South Australia (BDBSA), DEWNR and Atlas of Living Australia (ALA). All topographic data supplied by Corporate and Client Services, DEWNR.

Compiled: June 2013.

© Copyright Department of Environment, Water and Natural Resources 2013. All Rights Reserved.