



Porzana tabuensis

Spotless Crake

AUS	SA	AMLR	Endemism	Residency
-	R	U	-	Nomadic



Photo: © Brian Furby

Conservation Significance

The AMLR distribution is part of a limited extant distribution in adjacent regions within SA. The species has been described as 'probably declining' within the AMLR.¹ Within the AMLR the species' relative area of occupancy is classified as 'Extremely Restricted'.²

Description

Dark-coloured crake with bright red eyes and pink legs. Rarely seen out of dense cover. Forages in shallow water, wading or climbing over floating vegetation.³ Calls are: a single, sharp 'kek'; shrill, machine-gun chitter; loud explosive purring, like a motor-bike.⁴

Distribution and Population

Mostly coastal distribution: south-east Australia and coastal WA, TAS and many islands. Winter visitor to north east NT and north east QLD. Occurs inland irregularly, in good seasons.⁴

Post-1983 AMLR filtered records around Adelaide (inner and northern suburbs and northern coast), around Onkaparinga River and Aldinga and isolated records near Strathalbyn, Finniss, Willunga and Deep Creek.² Other locations include nearby Clayton and Milang area, Lake Albert shoreline and Coorong NP.⁶

Pre-1983 AMLR filtered records limited to the outer eastern suburbs and a record east of Mount Compass.²

Habitat

Found in well vegetated freshwater wetlands with rushes, reeds and cumbungi.⁴ Will also frequent muddy areas, reedbeds or wetlands.⁵

Within the AMLR the preferred broad vegetation group is Wetland.²

Biology and Ecology

Feeds on aquatic insects and vegetation. Breeds from August to December. Nest is a shallow cup of grass, plants, often with a clumsy canopy. Clutch size three to five.⁴

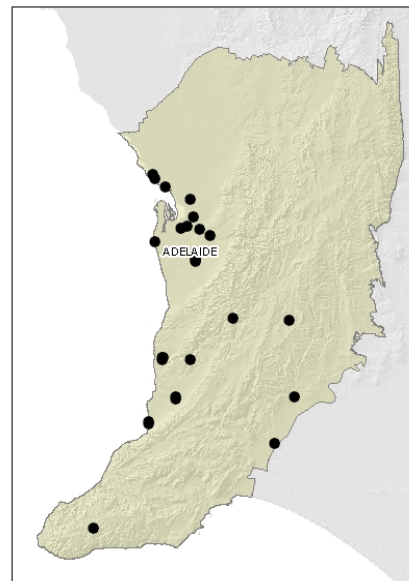
Aboriginal Significance

Post-1983 records indicate the majority of the AMLR distribution occurs in Kaurna Nation. It also occurs in Peramangk and Ngarrindjeri Nations.²

Threats

Current direct threats have been identified and rated for this species. Refer to the main plan accompanying these profiles.

Regional Distribution



Map based on filtered post-1983 records.² Note, this map does not necessarily represent the actual species' distribution within the AMLR.

Further information:

Biodiversity Conservation Unit, Adelaide Region
Phone: (61 8) 8336 0901 Fax: (61 8) 8336 0999
<http://www.environment.sa.gov.au/>

© Department for Environment and Heritage FIS 90346 May 2008

Prepared as part of the Regional Recovery Plan for Threatened Species and Ecological Communities of Adelaide and the Mount Lofty Ranges, South Australia 2009 - 2014





ADELAIDE AND MOUNT LOFTY RANGES SOUTH AUSTRALIA Threatened Species Profile

Department
for Environment
and Heritage

References

Note: In some cases original reference sources are not included in this list, however they can be obtained from the reference from which the information has been sourced (the reference cited in superscript).

- 1 Cale, B. (2005). *Towards a Recovery Plan for the Declining Birds of the Mount Lofty Ranges*. Scientific Resource Document for Birds for Biodiversity. Unpublished Report.
- 2 Department for Environment and Heritage (2007). *Adelaide and Mount Lofty Ranges Regional Recovery Pilot Project Database*. Unpublished data extracted and edited from BDBSA, SA Herbarium (July 2007) and other sources.
- 3 Morcombe, M. (2000). *Field Guide to Australian Birds*. Steve Parish Publishing Pty Ltd, Queensland.
- 4 Pizzey, G. (1997). *The Graham Pizzey and Frank Knight Field Guide to the Birds of Australia*. Harper Collins, Sydney.
- 5 Turner, M. S. (2001). *Conserving Adelaide's Biodiversity: Resources*. Urban Forest Biodiversity Program, Adelaide.
- 6 Waanders, P. I. (2004). *A Birdwatching Guide to South Australia*. Available from www.sabirding.com/sites-6.htm (accessed November 2007).

Further information:

Biodiversity Conservation Unit, Adelaide Region
Phone: (61 8) 8336 0901 Fax: (61 8) 8336 0999
<http://www.environment.sa.gov.au/>

© Department for Environment and Heritage FIS 90346 May 2008

Prepared as part of the Regional Recovery Plan for Threatened Species and Ecological Communities of Adelaide and the Mount Lofty Ranges, South Australia 2009 - 2014



Government
of South Australia