



PLANT

Neopaxia australasica

White Purslane

AUS	SA	AMLR	Endemism	Life History
-	R	V	-	Perennial

Family *PORTULACACEAE*



Photo: C. Totterdell ©ANBG

Conservation Significance

The AMLR distribution is disjunct, isolated from other extant occurrences within SA. Within the AMLR the species' relative area of occupancy is classified as 'Extremely Restricted'. Relative to all AMLR extant species, the species' taxonomic uniqueness is classified as 'Very High'.³

Description

Creeping, water-loving herb with ground running, rhizomatous stems to 30 cm long. Leaves succulent, with papery edges at the base. Fragrant white flowers with five delicate petals.^{1,2,6}

Synonym: *Montia australasica*.⁵

Distribution and Population

Also occurs in WA, NSW, VIC, TAS and NZ. In SA occurs in NL, SL, KI, MU and SE regions.² Limited occurrence across the SA range (T. Croft *pers. comm.*).

Post-1983 AMLR filtered records from Kersbrook, Inglewood and north of Currency Creek.³ Also known from Nangkita (R. Taylor *pers. comm.*).

Pre-1983 AMLR filtered records indicate a wider historic distribution with scattered records from Second Valley Forest, Myponga, McLaren Vale,

Kangarilla, Mount Bold, Millbrook Reservoir and Mount Crawford areas.³

Habitat

Grows in moist areas including ponds, swamps, creeks and damp depressions. Leaves reach greatest lengths in running water (T. Croft *pers. comm.*).^{2,6}

Recorded in association with *Triglochin procerum*, *Eleocharis sphacelata*, *Ranunculus amphitrichus*, *Carex tereticaulis* and *Juncus* sp.⁴

Within the AMLR the preferred broad vegetation group is Wetland.³

Within the AMLR the species' degree of habitat specialisation is classified as 'Very High'.³

Biology and Ecology

Flowers between November and March.²

Aboriginal Significance

Post-1983 records indicate the AMLR distribution occurs in Peramangk and Ngarrindjeri Nations, bordering Kurna Nation.³

Threats

The continuing loss of ephemerally damp habitat is a major threat (R. Taylor *pers. comm.*).

Within the AMLR, the majority of known distribution occurs within 2 km of confirmed or suspected *Phytophthora* infestations.³

Additional current direct threats have been identified and rated for this species. Refer to the main plan accompanying these profiles.

Further information:

Biodiversity Conservation Unit, Adelaide Region
Phone: (61 8) 8336 0901 Fax: (61 8) 8336 0999
<http://www.environment.sa.gov.au/>

© Department for Environment and Heritage FIS 90346 May 2008

Prepared as part of the Regional Recovery Plan for Threatened Species and Ecological Communities of Adelaide and the Mount Lofty Ranges, South Australia 2009 - 2014



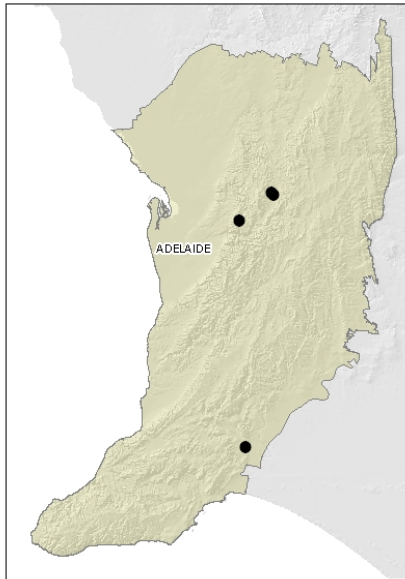


ADELAIDE AND MOUNT LOFTY RANGES SOUTH AUSTRALIA

Threatened Species Profile

Department
for Environment
and Heritage

Regional Distribution



Map based on filtered post-1983 records.³ Note, this map does not necessarily represent the actual species' distribution within the AMLR.

References

Note: In some cases original reference sources are not included in this list, however they can be obtained from the reference from which the information has been sourced (the reference cited in superscript).

1 Botanic Gardens Trust (1993). *PlantNET - The Plant Information Network System of Botanic Gardens Trust*. Available from <http://plantnet.rbgsyd.nsw.gov.au> (accessed September 2007).

2 Department for Environment and Heritage *Electronic Flora of South Australia species Fact Sheet: Montia australasica (Hook.f.) Pax & K. Hoffm.* Available from <http://www.flora.sa.gov.au> (accessed April 2008).

3 Department for Environment and Heritage (2007). *Adelaide and Mount Lofty Ranges Regional Recovery Pilot Project Database*. Unpublished data extracted and edited from BDBSA, SA Herbarium (July 2007) and other sources.

4 Department for Environment and Heritage (2007). *State Herbarium of South Australia Database*. Unpublished data, extracted October 2007.

5 Jessop, J. P. and Toelken, H. R., eds. (1986). *Flora of South Australia*. South Australian Government Printing Division, Adelaide.

6 Prescott, A. (1988). *It's Blue with Five Petals*. Ann Prescott, Adelaide, South Australia.

Further information:

Biodiversity Conservation Unit, Adelaide Region
Phone: (61 8) 8336 0901 Fax: (61 8) 8336 0999
<http://www.environment.sa.gov.au/>

© Department for Environment and Heritage FIS 90346 May 2008

Prepared as part of the Regional Recovery Plan for Threatened Species and Ecological Communities of Adelaide and the Mount Lofty Ranges, South Australia 2009 - 2014



Government
of South Australia