



PLANT

Crassula sieberiana

Sieber's Crassula

AUS	SA	AMLR	Endemism	Life History
-	E	E	-	Annual

Family CRASSULACEAE



Photo: © Julia Bignall

Conservation Significance

In SA, the majority of the distribution is confined within the AMLR, disjunct from the remaining extant distribution in other States. Within the AMLR the species' relative area of occupancy is classified as 'Extremely Restricted'. Relative to all AMLR extant species, the species' taxonomic uniqueness is classified as 'Very High'.⁴

Description

Tiny erect herb to ankle high; leaves succulent, paired; flowers small, fleshy; usually one flower per group will be on a long thin stalk. Sepals with long tips, petals white or pink.⁹

Distribution and Population

Also occurs in QLD, VIC, TAS and WA.² Within SA restricted to the AMLR.⁷

Post-1983 AMLR filtered records from the Finnis area, Hindmarsh Falls, Parra Wirra RP, Deep Creek CP and Mitcham in Adelaide.⁴ Two populations are known in Hindmarsh Falls Reserve.³

There are no pre-1983 records.⁴

Habitat

Listed in the EPBC Act nomination as occurring in Peppermint Box (*Eucalyptus odorata*) grassy woodland.⁸ Also grows in semi arid areas, especially in sand.⁹

Recorded AMLR habitats include:

- Finnis area: with *Eucalyptus cosmophylla* and *E. fasciculosa*¹
- Finnis CP: damp, moss rock crevices, with *Anogramma leptophylla* and *Asplenium flabellifolium*
- Hindmarsh Falls-Myponga area: mud among *Juncus*, *Gahnia*, *Blechnum* and *Gleichenia microphylla*
- Deep Creek CP: on rocks near waterfall
- Mitcham: in *Eucalyptus microcarpa* woodland, on rocky outcrop
- Para Wirra RP: granite outcropping and sparse quartz pebble strew; *Eucalyptus camaldulensis* var. *camaldulensis* woodland over *Callistemon sieberi*, *Avena barbata*, *Dodonaea viscosa* ssp. *spatulata* and *Acacia paradoxa*.⁶

Within the AMLR the preferred broad vegetation groups are Riparian, Grassy Woodland and Wetland.⁴

Within the AMLR the species' degree of habitat specialisation is classified as 'Moderate-Low'.⁴

Biology and Ecology

Flowers in spring and summer.⁹

Establishes in the presence of adult competition (multi-aged populations). Reproduces by seed after fire. Little impact on sub-populations from repeated fires.⁵

Aboriginal Significance

Post-1983 records indicate the AMLR distribution occurs in southern Ngarrindjeri, central Kurna and northern Peramangk Nations.⁴

Threats

Threats include:

- weed invasion, which poses a major threat to Peppermint Box grassy woodland communities occurring on relatively fertile soils (Davies 1997)
- small population size of many communities⁸
- livestock grazing, especially on grassy woodland sites (Robertson 1998)⁸

Further information:

Biodiversity Conservation Unit, Adelaide Region
Phone: (61 8) 8336 0901 Fax: (61 8) 8336 0999
<http://www.environment.sa.gov.au/>

© Department for Environment and Heritage FIS 90346 May 2008

Prepared as part of the Regional Recovery Plan for Threatened Species and Ecological Communities of Adelaide and the Mount Lofty Ranges, South Australia 2009 - 2014





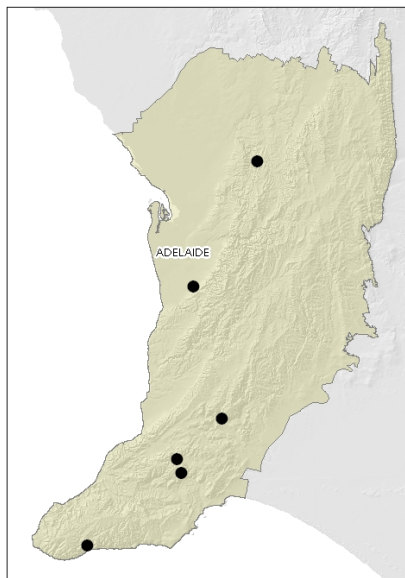
- insensitive site management activities, including weed control.³

Many areas of occurrence are steep, degraded and weedy (with a history of grazing). The remaining population represents a refuge (all other suitable areas have been degraded/grazed) (K. Brewer and J. Smith *pers. comm.*).

Limited occurrence within the AMLR, however approximately half its known distribution occurs within 2 km of confirmed or suspected *Phytophthora* infestations.⁴

Additional current direct threats have been identified and rated for this species. Refer to the main plan accompanying these profiles.

Regional Distribution



Map based on filtered post-1983 records.⁴ Note, this map does not necessarily represent the actual species' distribution within the AMLR.

References

Note: In some cases original reference sources are not included in this list, however they can be obtained from the reference from which the information has been sourced (the reference cited in superscript).

¹ Armstrong, D. M., Croft, S. N. and Foulkes, J. N. (2003). *A Biological Survey of the Southern Mount Lofty Ranges, South Australia, 2000-2001*. Department for Environment and Heritage, South Australia.

² Botanic Gardens Trust (1993). *PlantNET - The Plant Information Network System of Botanic Gardens Trust*. Available from <http://plantnet.rbgsyd.nsw.gov.au> (accessed September 2007).

³ Department for Environment and Heritage. (2007). Adelaide and Mount Lofty Ranges Regional Recovery Pilot Expert Flora Workshop, Unpublished Notes. Participants: Bickerton, D., Croft, T., Jury, T., Lang, P., Prescott, A., Quarmby, J. and Smith, K., Adelaide.

⁴ Department for Environment and Heritage (2007). *Adelaide and Mount Lofty Ranges Regional Recovery Pilot Project Database*. Unpublished data extracted and edited from BDBSA, SA Herbarium (July 2007) and other sources.

⁵ Department for Environment and Heritage (2007). *Combined Fire Response Database*. Unpublished data, extracted September 2007.

⁶ Department for Environment and Heritage (2007). *State Herbarium of South Australia Database*. Unpublished data, extracted October 2007.

⁷ Department for Environment and Heritage. (2007). Summary of two Wetland Threatened Flora Workshops (unpublished spreadsheet).

⁸ Department of the Environment and Water Resources (2007). *Peppermint Box (Eucalyptus odorata) Grassy Woodland: Nomination for listing under the Environment Protection and Biodiversity Conservation Act 1999*. Available from <http://eied.deh.gov.au/biodiversity/threatened/nominations/> (accessed August 2007).

⁹ Prescott, A. (1988). *It's Blue with Five Petals*. Ann Prescott, Adelaide, South Australia.

Further information:

Biodiversity Conservation Unit, Adelaide Region
Phone: (61 8) 8336 0901 Fax: (61 8) 8336 0999
<http://www.environment.sa.gov.au/>

© Department for Environment and Heritage FIS 90346 May 2008

Prepared as part of the Regional Recovery Plan for Threatened Species and Ecological Communities of Adelaide and the Mount Lofty Ranges, South Australia 2009 - 2014

