



*Acacia gunnii*

Ploughshare Wattle

AUS	SA	AMLR	Endemism	Life History
-	R	V	-	Perennial

Family LEGUMINOSAE



Photo: © Peter Lang

**Conservation Significance**

The AMLR distribution is disjunct, isolated from other extant occurrences within SA. Within the AMLR the species' relative area of occupancy is classified as 'Very Restricted'.<sup>2</sup>

The AMLR population is an interesting and very isolated outlier, with a form somewhat different from the Victorian population (P. Lang *pers. comm.*).

**Description**

Low sprawling shrub 20-80 cm high, with rigid and prickly triangular shaped leaves.<sup>1,3</sup>

**Distribution and Population**

Found in SA, QLD, NSW, ACT, VIC and TAS. In SA mainly occurs in SL with an isolated population in the SE.<sup>1,3</sup>

Post-1983 AMLR filtered records from the southern Mount Lofty Ranges, from Mount Bold north to Mylor, Basket Range, and Eagle on the Hill areas.<sup>2</sup> Records also occur at Crafers, Mylor, Mount Bold, Totness CP, Bridgewater, and Cleland CP.<sup>3</sup>

Pre-1983 AMLR filtered records also include a record as far east as Blakiston (near Mount Barker) and records closer to the Adelaide foothills.<sup>2</sup> Recorded as commonly distributed in bushland in the Inglewood area in the early 1960s.<sup>3</sup> Other historical records occur at Mount Lofty, Crafers, Eagle on the Hill, Forest Range, Waterfall Gully, Bridgewater area, Burnside, Mylor, Scott Creek, Stonyfell Ridge, Hahndorf, Aldgate and Cleland.<sup>3</sup>

**Habitat**

Generally occurs on rocky hillsides and amongst rocky outcrops in open forest, associated with *Eucalyptus obliqua* and *Eucalyptus baxteri* in sandy loam and hard, acidic yellow-duplex soils. Rainfall is 500-1000 mm.<sup>1,3</sup>

Associated understorey species include *Pultenaea largiflorens*, *P. involucrata*, *Daviesia leptophylla*, *Leptospermum myrsinoides*, *Lepidosperma semiteres*, *Hibbertia* spp., *Lomandra* spp. and introduced grasses.<sup>3</sup>

More abundant in open/partially disturbed or rocky habitat where understorey cover is sparser, e.g. often along track edges (T. Jury *pers. comm.*), and occurs in the same habitat as *Leionema hillebrandii* (T. Croft and P. Lang *pers. comm.*).

Within the AMLR the preferred broad vegetation groups are Heathy Woodland and Heathy Open Forest.<sup>2</sup>

Within the AMLR the species' degree of habitat specialisation is classified as 'High'.<sup>2</sup>

**Biology and Ecology**

Flowers between May and September.<sup>1</sup>

Cultivated as an attractive, fast growing ornamental shrub used in rockery plantings.<sup>1</sup>

**Aboriginal Significance**

Post-1983 records indicate the majority of AMLR distribution occurs in central-west Peramangk Nation. Also present in Kurna Nation.<sup>2</sup>

**Threats**

The skeletal and freely draining quartzite soils on which it grows is prone to drying as a result of any reduction in rainfall associated with drought or climate change

**Further information:**

Biodiversity Conservation Unit, Adelaide Region  
Phone: (61 8) 8336 0901 Fax: (61 8) 8336 0999  
<http://www.environment.sa.gov.au/>

© Department for Environment and Heritage FIS 90346 May 2008

Prepared as part of the Regional Recovery Plan for Threatened Species and Ecological Communities of Adelaide and the Mount Lofty Ranges, South Australia 2009 - 2014





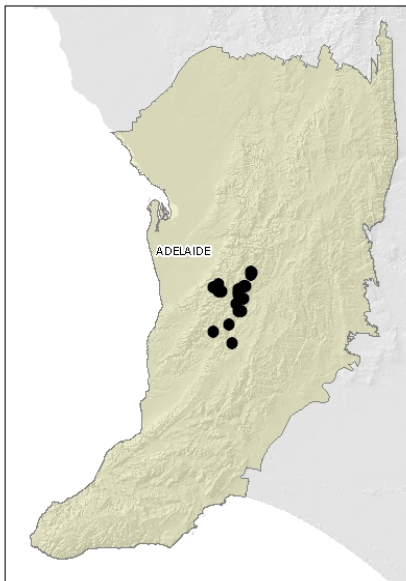
(P. Lang and T. Croft *pers. comm.*).

The Mount Bold population is threatened by wild goats and introduced *Acacia* spp.<sup>3</sup>

Within the AMLR, the majority of its known distribution occurs within 2 km of confirmed or suspected *Phytophthora* infestations.<sup>2</sup>

Additional current direct threats have been identified and rated for this species. Refer to the main plan accompanying these profiles.

### Regional Distribution



Map based on filtered post-1983 records.<sup>2</sup> Note, this map does not necessarily represent the actual species' distribution within the AMLR.

### References

Note: In some cases original reference sources are not included in this list, however they can be obtained from the reference from which the information has been sourced (the reference cited in superscript).

1 Department for Environment and Heritage *Electronic Flora of South Australia species Fact Sheet: Acacia gunnii Benth.* Available from <http://www.flora.sa.gov.au> (accessed October 2007).

2 Department for Environment and Heritage (2007). *Adelaide and Mount Lofty Ranges Regional Recovery Pilot Project Database*. Unpublished data extracted and edited from BDBSA, SA Herbarium (July 2007) and other sources.

3 Department for Environment and Heritage (2007). *State Herbarium of South Australia Database*. Unpublished data, extracted October 2007.

---

### Further information:

Biodiversity Conservation Unit, Adelaide Region  
Phone: (61 8) 8336 0901 Fax: (61 8) 8336 0999  
<http://www.environment.sa.gov.au/>

© Department for Environment and Heritage FIS 90346 May 2008

Prepared as part of the Regional Recovery Plan for Threatened Species and Ecological Communities of Adelaide and the Mount Lofty Ranges, South Australia 2009 - 2014

