

McLaren Vale Water Allocation Plan Advisory Committee

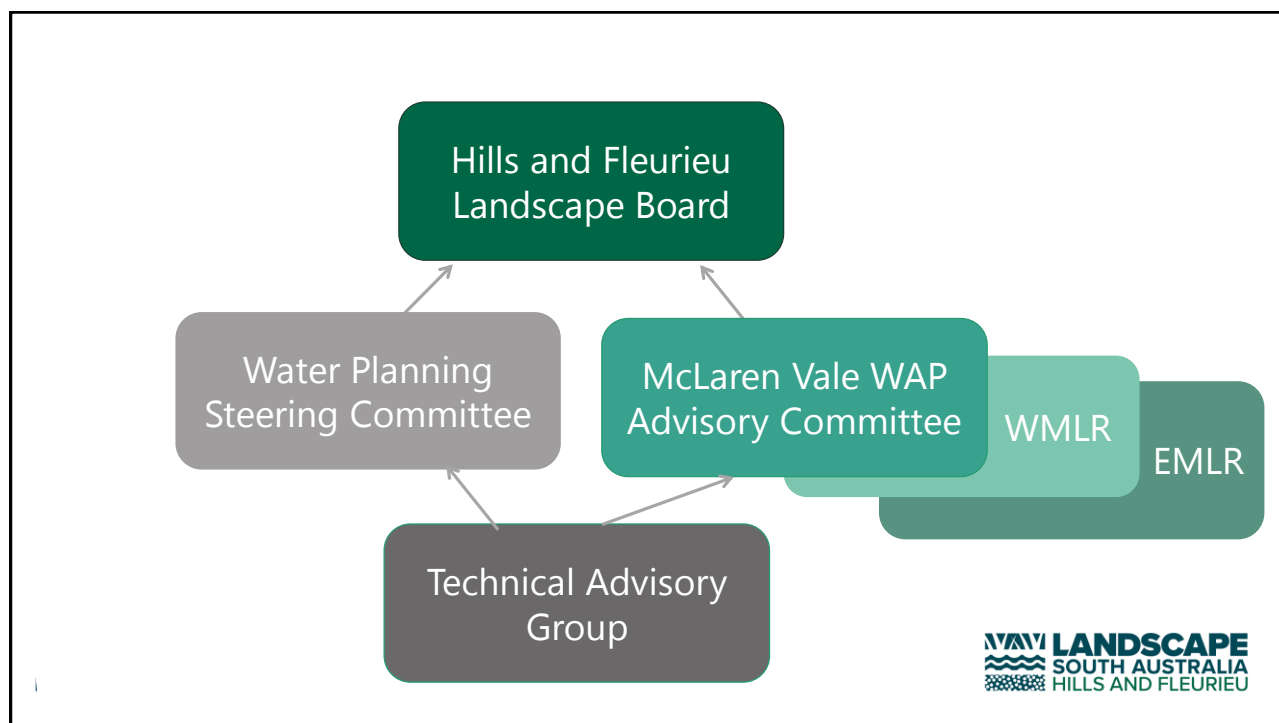


LANDSCAPE
SOUTH AUSTRALIA
HILLS AND FLEURIEU

Role of the WAPAC



LANDSCAPE
SOUTH AUSTRALIA
HILLS AND FLEURIEU



WAPAC Functions

Provide advice and support to the Board's review / amendment process of a water allocation plan by:

- Assessing the performance of a current plan;
- Undertaking a risk assessment of the socio-economic, ecological and cultural impacts of any changes to surface water/groundwater resources;
- Advising the Board on engaging with the community during the review/amendment of a plan;
- Reviewing and commenting on draft policies and implementation strategies as they are developed for a plan.

Great WAP Advisory Committees....

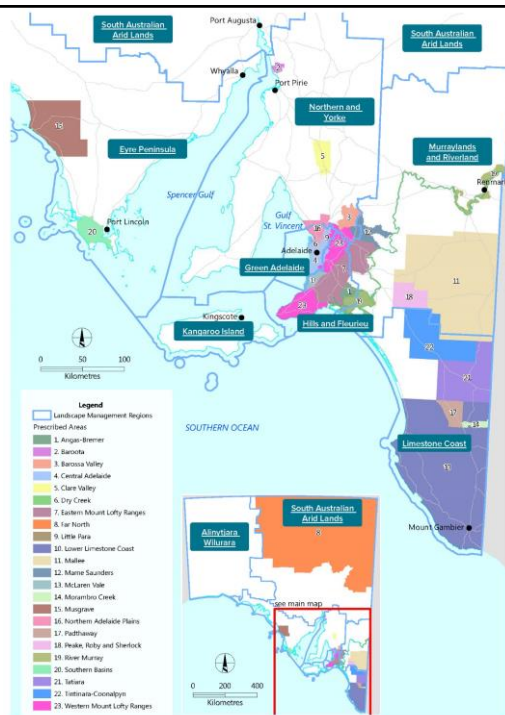
- Ask questions (understand and own the plan)
- Share concerns and ideas (yours and the community's)
- Turn off phones ☺
- Flow information back to industries, groups & community about the process and to test our thinking
- Consider scientific, local and First Nations knowledge
- Others?

Water Allocation Planning Outline

Prescribed Areas

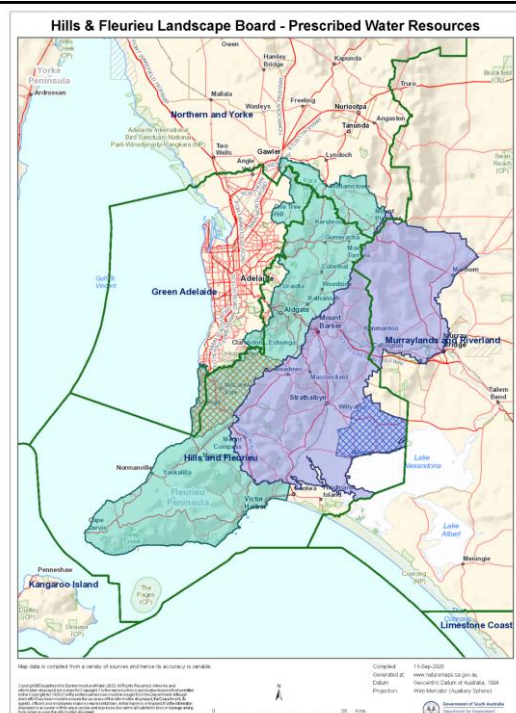
An area is prescribed when more intensive management is needed to protect the water resource.

Prescription means that the Landscape Board must develop a water allocation plan for that area.



Hills and Fleurieu Prescribed Water Resources

- Eastern Mount Lofty Ranges
 - Angas Bremer groundwater
- } Single WAP
- Western Mount Lofty Ranges
 - McLaren Vale groundwater—prescribed in 1999
- } Separate WAPs



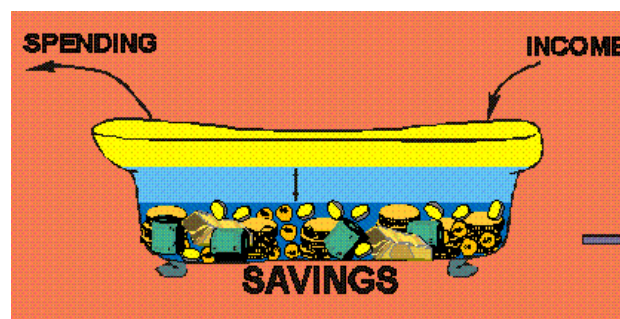
Water Allocation Plans

- Manage native water resources – groundwater and/or surface water
- Set limits for water take
- Trade rules
- Water affecting activity rules – e.g. rules around new bores
- Monitoring plan



Groundwater Limits

Water take



Groundwater recharge

Groundwater level

Water Allocation Plan Review

- Comprehensive review at least every 10 years
- Stakeholder and scientific input

A. Looking back

- Has the plan been working well?

B. Looking forward

- Is the plan suitable to manage future challenges?

- *Should the plan be amended?*
- Decision by Board, advice to Minister

Water Allocation Plan Amendment

- Can update part or all of plan
- Could:
 - Update science and other information
 - Update rules (e.g. split allocation limits into separate aquifers)
 - Change allocations – but would need good reasons
e.g. high risk to resource
- Stakeholder and scientific input
- Formal consultation
- Endorsed by Board, adopted by Minister

What about the Water Security Plan?

- Vignerons have raised concerns about water security
- Objectives still to be defined but likely to include:
 - Projecting water supply – both native and alternative, and factoring climate change
 - Projecting water needs
 - Identifying gaps
 - Source document for strategic decisions
- Working group meeting tentatively late September

Water Allocation Plan Review

A. Looking back

- Has the plan been working well?

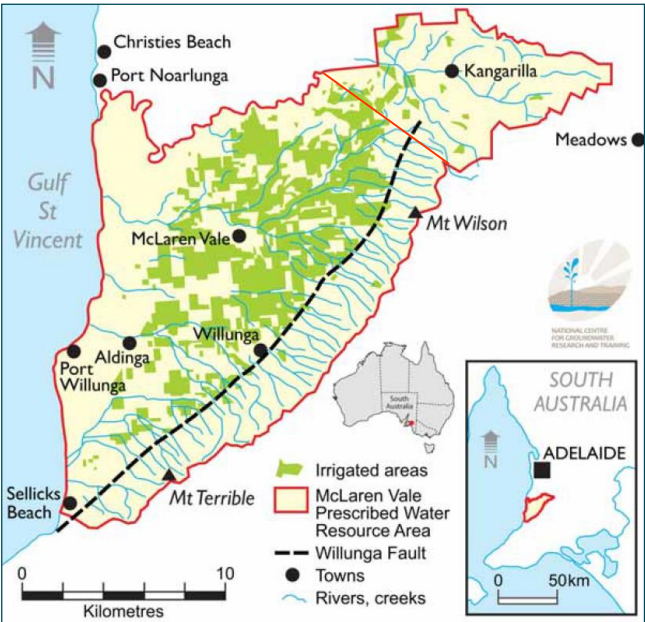
B. Looking forward

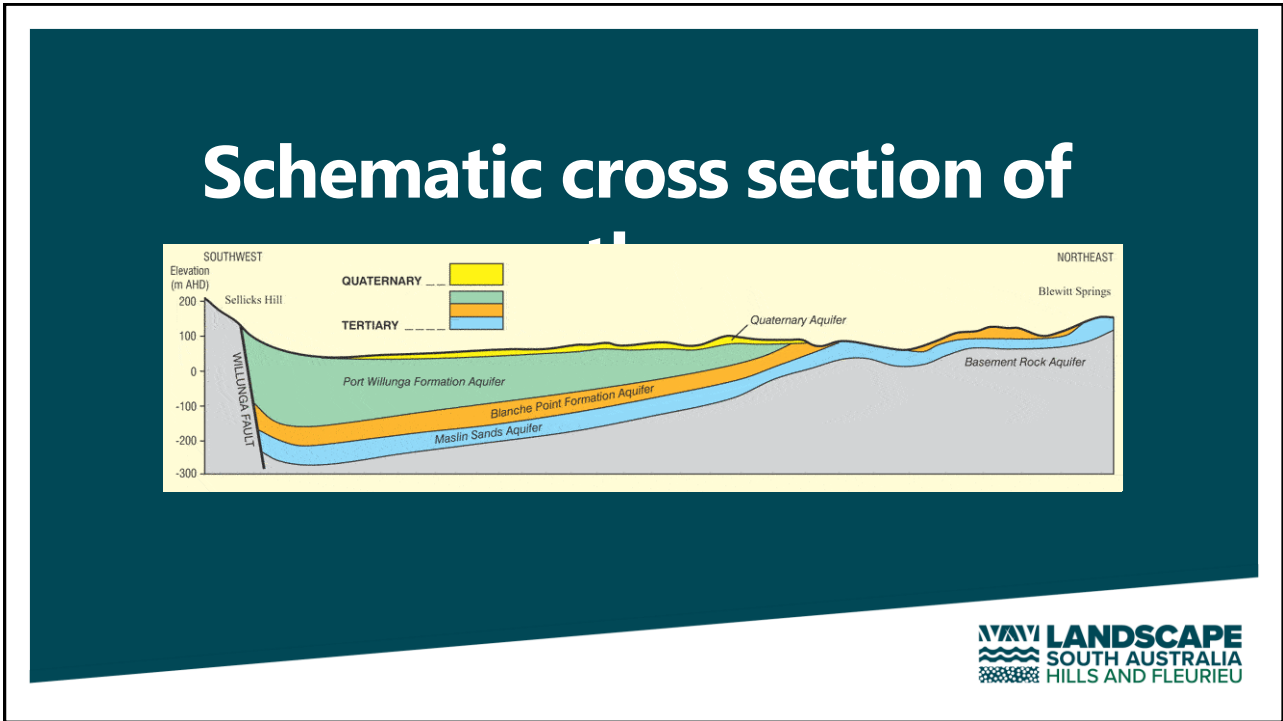
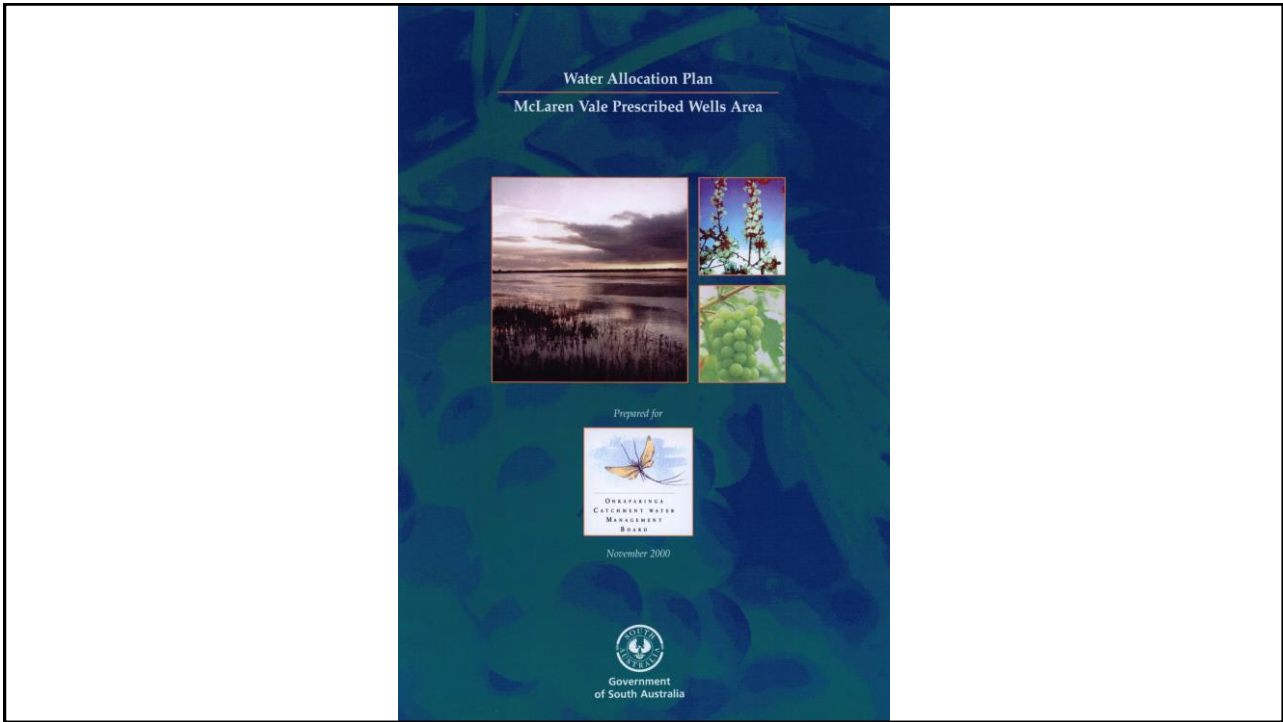
- Is the plan suitable to manage future challenges?

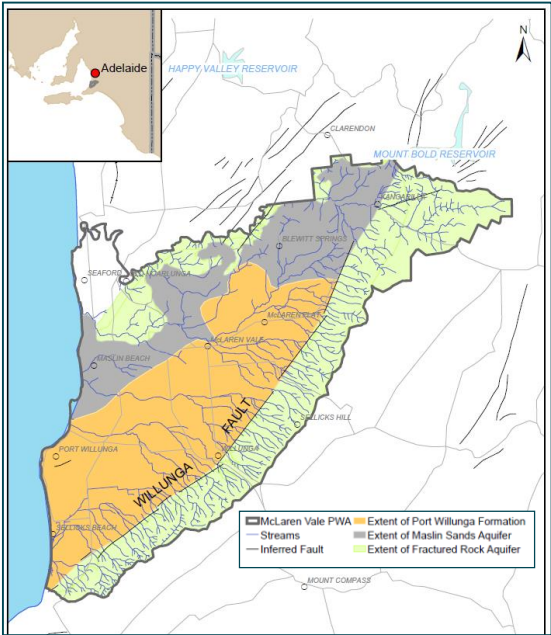
- Martin Stokes to talk about the history of the plan
- Group discussion about the effectiveness of the plan
- Discuss early engagement of community

History of water allocation planning in McLaren Vale and an outline of current WAP

– Martin Stokes

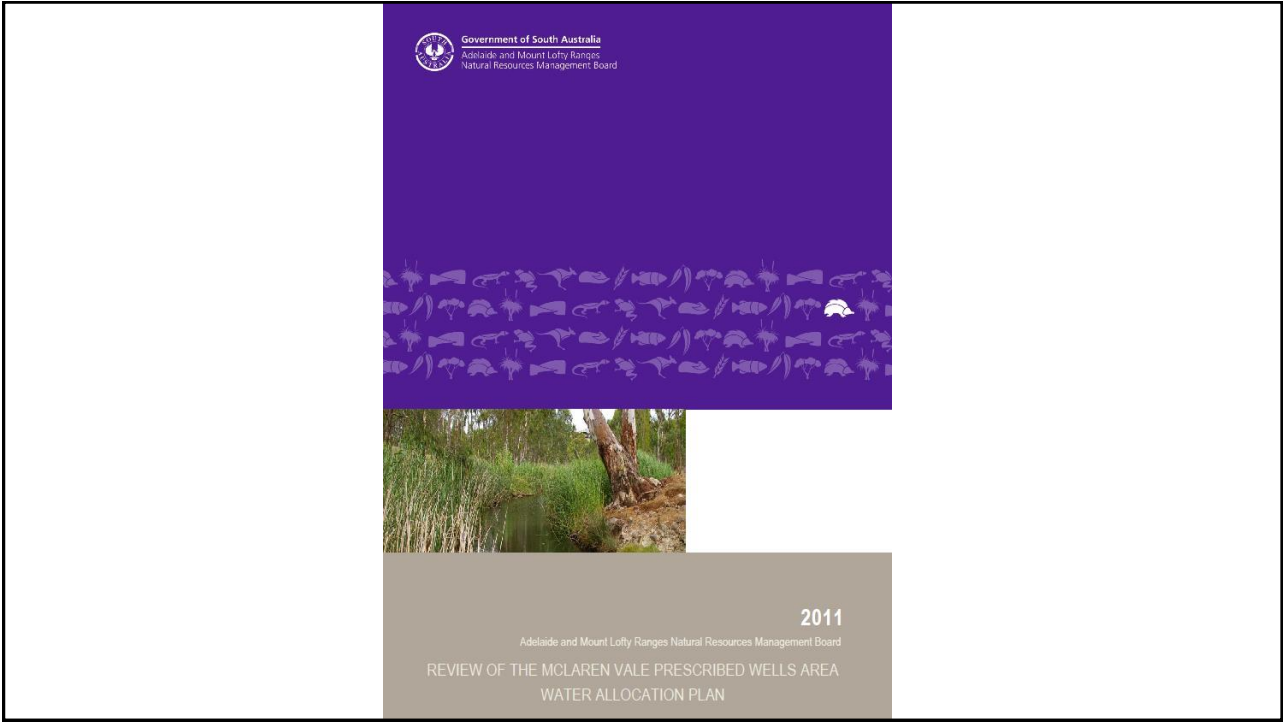






WATER ALLOCATION PLAN
McLaren Vale Prescribed Wells Area
2007





Engagement with community

Review

- WAPAC to provide input and bring concerns from community
- Could email out a brief online survey to understand if there are concerns with the effectiveness of the WAP?

Amendment

- WAPAC to provide input and bring concerns from community to proposed policy changes
- Test proposed policies with community and industries
- Formal consultation

Review Process Outline

Process from here

- Next meetings
 2. Looking back and context
 - Groundwater science
 - Ecological assets
 - First Nations cultural values
 - Climate change
 - Results from stakeholder survey?
 3. Risk Assessment – Part 1
 4. Risk Assessment – Part 2
 5. Draft Review

Why risk assessment?

- Is a systematic way of examining risks to economic, environmental, social and cultural values of a water resource
- Is widely used in water resource management – was a Basin Plan requirement on the Basin States
- DEW and Landscape Boards have a well established process and is has been found to be effective

What is risk assessment?

A. Looking back

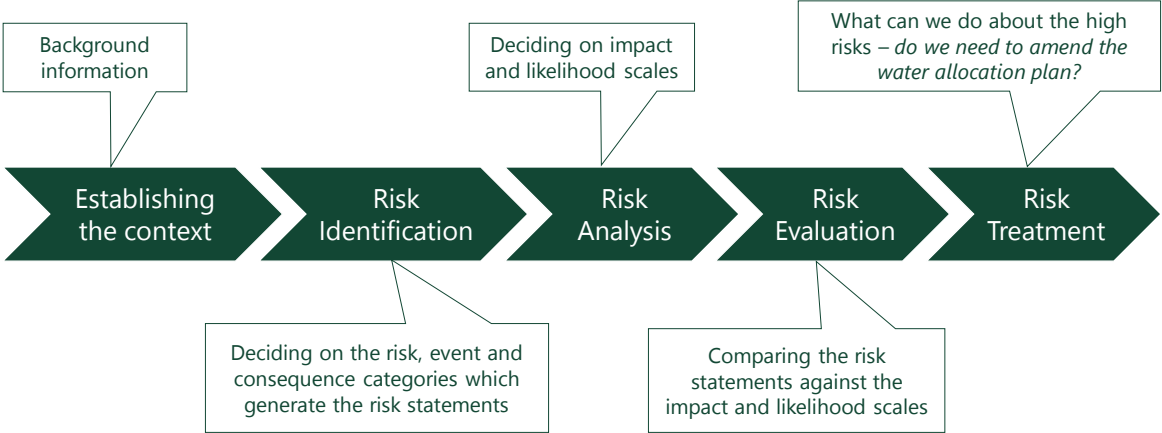
- Has the plan been working well?

B. Looking forward

- Is the plan suitable to manage future challenges?

- What are the risks to the resource over the next ten years?
- Could those risks be reduced by amending the plan?

What is risk assessment?



What is risk assessment?

