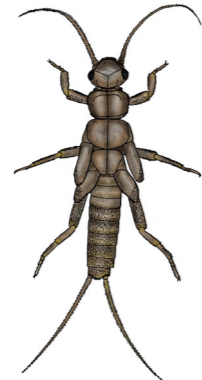


# Aquatic Macroinvertebrate ID Key

## Legs, tails or feelers



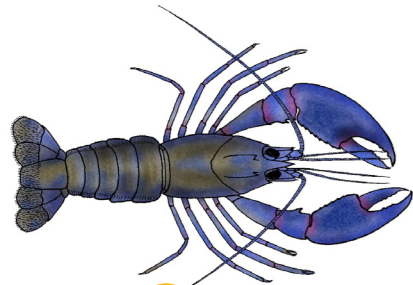
caddisfly larva (8)



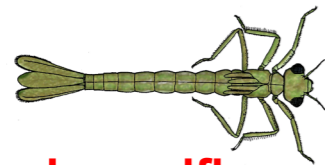
stonefly larva (10)



mayfly larva (9)



yabby (4)



damselfly larva (3)

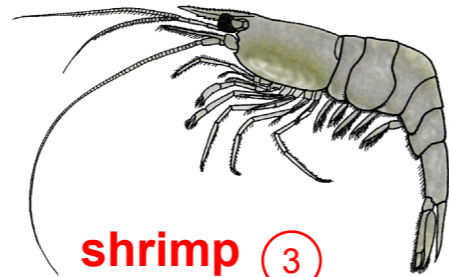


dragonfly larva (3)

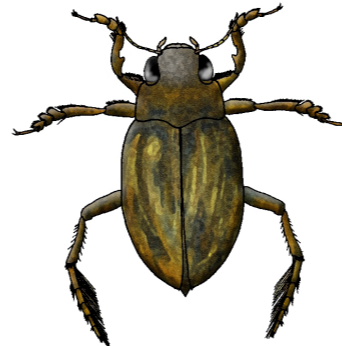
### Pollution Sensitivity\*:

- (NR) Not rated
- (10)–(8) Very sensitive
- (7)–(6) Sensitive
- (5)–(4) Tolerant
- (3)–(1) Very tolerant

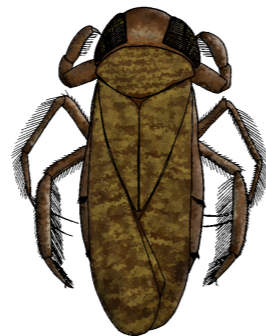
## Swims fast



shrimp (3)



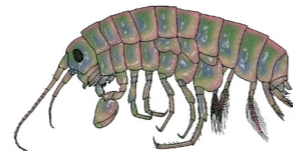
diving beetle (2)



water boatman (2)



back swimmer (1)



scud (3)

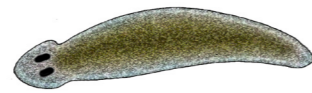
## Slides



freshwater snail (1)



leech (1)

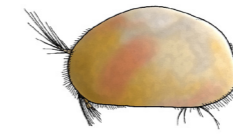


flatworm (2)

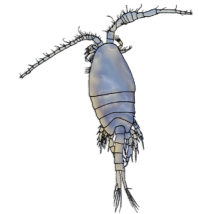


mosquito pupa (1)

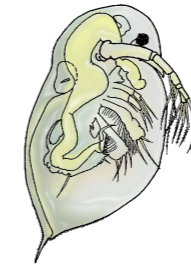
## Tiny



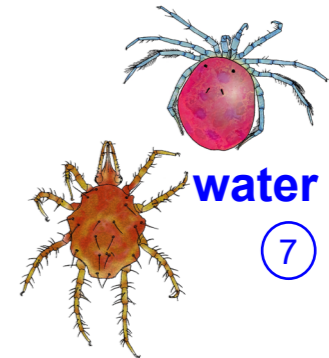
seed shrimp (NR)



copepod (NR)

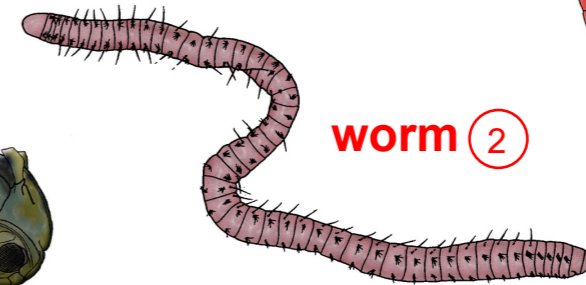


water flea (NR)

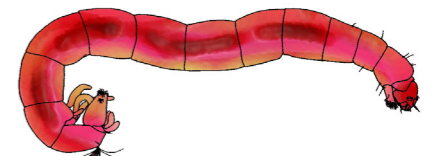


water mites (7)

## Wriggles



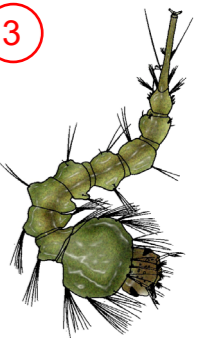
worm (2)



non-biting midge larva (3)



biting midge larva (4)



mosquito larva (1)

Sensitivity ratings from SIGNAL2 system in "New sensitivity grades for Australian river macroinvertebrates." Bruce C. Chessman. Marine and Freshwater Research, 2003, 54, 95-103.