

Evaluation of the Western and Eastern Mount Lofty Ranges Water Allocation Plans

Frequently Asked Questions

What is a Water Allocation Plan?

A water allocation plan (WAP) is a legal document that sets out the rules for using prescribed water resources. A WAP ensures water is fairly and sustainably allocated for community, industry, and the environment.

Both surface water and groundwater is prescribed in the Western Mount Lofty Ranges (WMLR) and Eastern Mount Lofty Ranges (EMLR). Overleaf is a map of these regions.

Why are water allocation plans important?

Water is a precious resource. There is a limit to how much is available so it is vital to balance environmental, social and economic needs, to ensure long-term sustainability and security.

Why are the WAPs being evaluated?

To ensure that a plan remains up to date, a water allocation plan must be reviewed (evaluated) on a comprehensive basis at least once every 10 years. The EMLR and WMLR WAPs were both first adopted in 2013 and are now due to be evaluated.

The purpose of the evaluation is to look at whether the water allocation plan is effective, and whether amendments are required. Both the Eastern and Western Mount Lofty Ranges Water Allocation Plans are likely to require amendments.

Visit: <https://www.landscape.sa.gov.au/hf>

Email: HFWaterTeam@sa.gov.au

Phone: 08 8391 7500

What will the evaluation involve?

The Hills and Fleurieu Landscape Board will work with community, First Nations, and industry stakeholders over 2023 to ensure their views are heard. The board will also work with scientists from the Department for Environment and Water to assess surface water, groundwater, ecological and climate change aspects. This work will inform the focus areas for the WAP amendments.

What happens next?

Once the evaluation project has been completed by the end of 2023, a larger process will begin to amend the two WAPs. The amendment will see substantial community engagement to discuss their vision for the future of the resource and what changes to the WAPs are needed to achieve this vision.

What do we want to hear from you?

During the evaluation, the Hills and Fleurieu Landscape Board is keen to hear from the community and industry about what aspects of the plan have worked well and what aspects need to be improved.

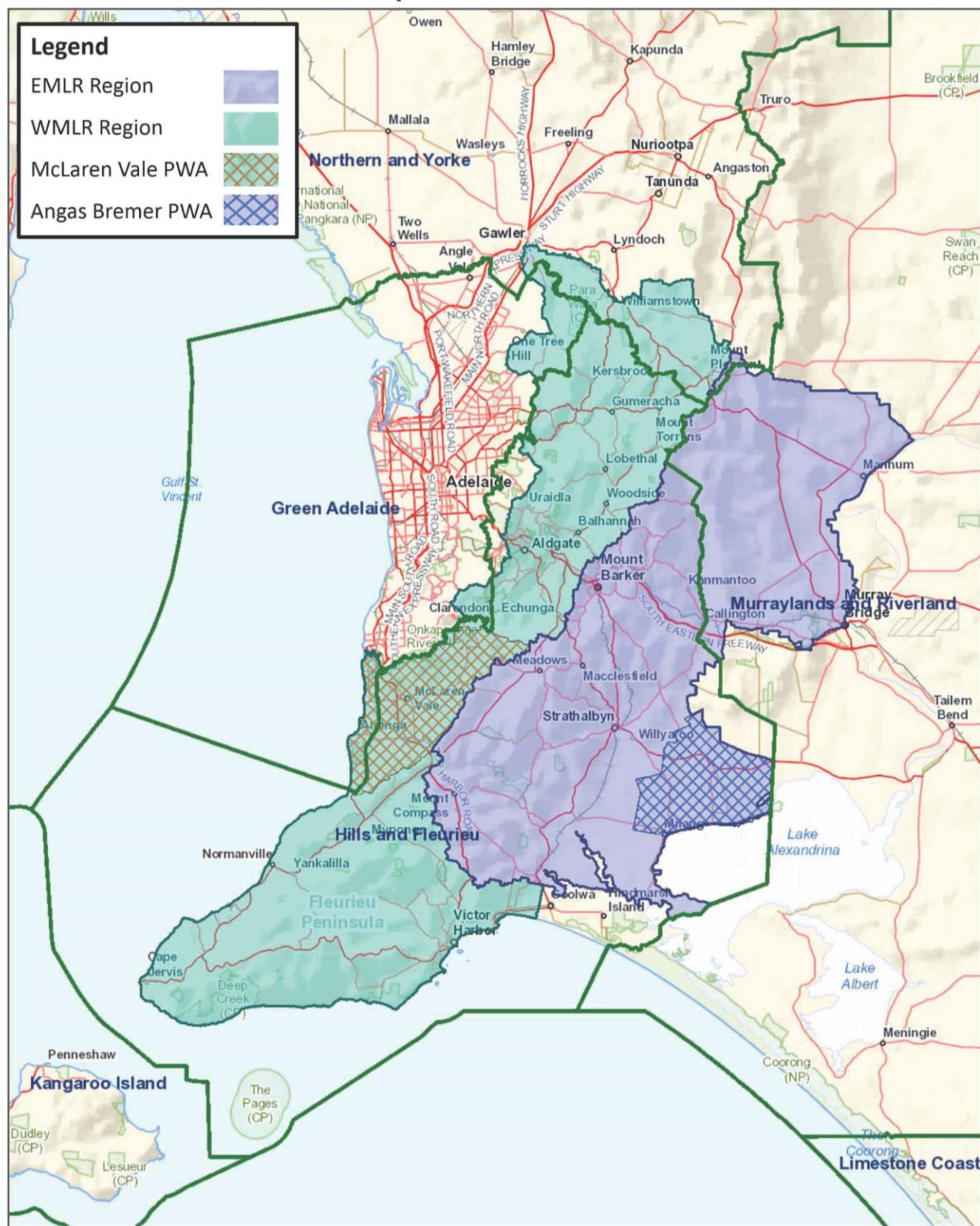
How can I be involved?



Scan the QR code to register for updates and be involved.

<https://www.surveymonkey.com/r/7MQ9HV8>

Hills & Fleurieu Landscape Board - Prescribed Water Resources



Map data is compiled from a variety of sources and hence its accuracy is variable

Copyright © Department for Environment and Water 2020. All Rights Reserved. All works and information displayed are subject to Copyright. For the reproduction or publication beyond that permitted by the Copyright Act 1968 (Cwth) written permission must be sought from the Department. Although every effort has been made to ensure the accuracy of the information displayed, the Department, its agents, officers and employees make no representations, either express or implied, that the information displayed is accurate or fit for any purpose and expressly disclaims all liability for loss or damage arising from reliance upon the information displayed.

Compiled: 11-Sep-2020
Generated at: www.naturemaps.sa.gov.au
Datum: Geocentric Datum of Australia, 1994
Projection: Web Mercator (Auxiliary Sphere)



Government of South Australia
Department for Environment
and Water