

# Achievements report 2021-2022

## Caring for land, water and nature

### Land

**>2800 kg** of baited-carrots distributed across **>400** properties

**6** targeted, co-designed weed management plans with local councils

Removed:  
**471** feral deer  
**420** feral goats  
**794** kangaroos

#### Resilient agriculture

Improved capacity of primary producers through:

**59** soil tests, **60** soil health workshop participants

**122** participants at field days

**14** participants in Bushfire Recovery and Land Management Course

**10** Biodiversity Action Plans with vignerons

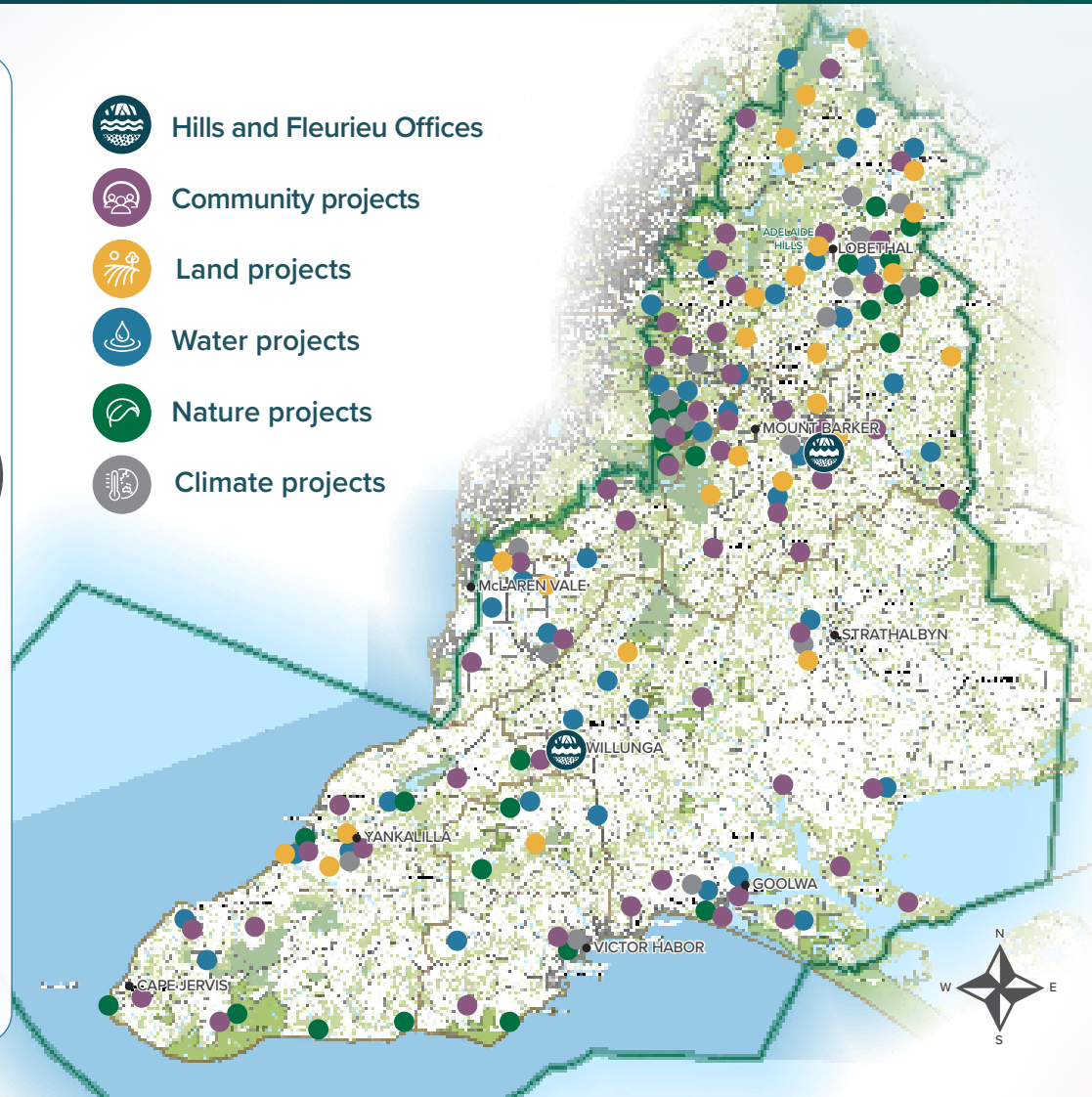
**70** networking events and opportunities with agriculture and industry groups



Advice provided  
**>1800** times to landholders including  
**>800** property visits



- Hills and Fleurieu Offices
- Community projects
- Land projects
- Water projects
- Nature projects
- Climate projects



### Nature

**>100,000** tubestock planted at Deep Creek, Newland Head and Stipiturus conservation parks for threatened birds across 50ha.

**73** volunteers supporting hooded plovers' nest protection and awareness-raising

**>13,000** tubestock planted by **130** volunteers to create bandicoot habitat



**49** landholders received grants through catchment recovery funding

**32** breeding programs for the recovery of threatened plants



**20** priority sites from Myponga Beach to Goolwa for weed control and revegetation with Spinifex plants.

### Community

**37** Grassroots Grants provided to individuals and groups totalling **\$220,000**

**>150** participants in First Nations cultural training across **7** sessions

**>400** unique Facebook posts



**>2500** volunteers from **121** groups supported and celebrated

**7** dedicated communications campaigns and over **40** news articles

**46** participants at Waterbug Bioblitz citizen science events

### Climate

**20,000** native plants given to **185** bushfire-affected landholders

**>7000** paddock trees planted for woodland bird resilience.

**>700** trees planted for crested shrike-tit habitat over **10km** of watercourse and **16** properties

**>650** interactions with fire-affected landholders at workshops, courses and field days

Organisational carbon footprint mapped

**90** participants in Climate Smart Farming Forum



### Water

**69** Water Affecting Activity permits issued

Advice provided to **341** landholders for Water Affecting Activities

**1149** Groundwater tests undertaken

Partnered with councils and community on Water Affecting Activities and low-flows for water ecosystem health

**38** compliance investigations conducted for Water Affecting Activities

Successful review of the McLaren Vale Water Allocation Plan





## Hills and Fleurieu Landscape Board

The board sees itself as a regional facilitator, catalyst and partnership builder. This role involves supporting and aligning the landscape management work being done, fostering local capacity, championing innovation and helping share knowledge between stakeholders.

The board has seven members who are local community representatives, and are assisted by 40 hard-working staff.

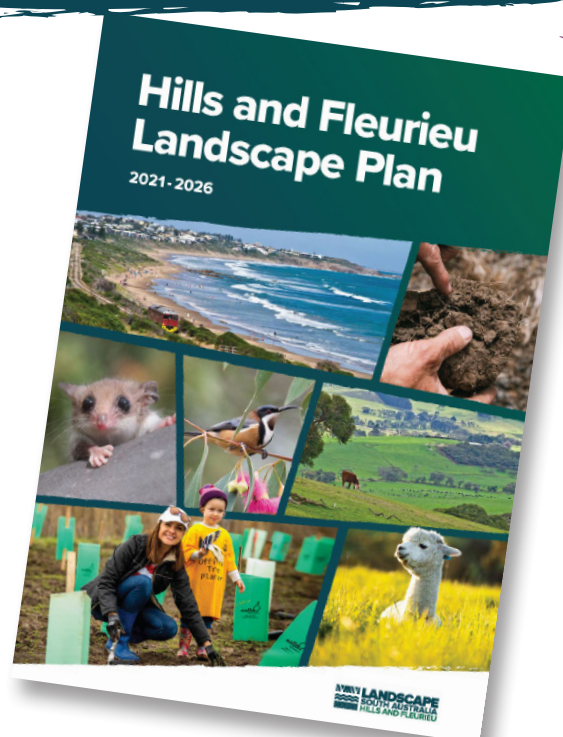
**Board Members:** Andy Lowe, David Greenhough (Chair), Jock Harvey, Janet Klein, Chris West, Carol Schofield.



## Our 5-year Landscape Plan

The **5-year Landscape Plan** guides the stewardship and restoration of the region's landscapes. The region faces significant challenges that are set out in the plan.

The plan seeks to align everyone's efforts and build stronger partnerships to achieve the plan's priorities.



## Key funding partnerships

### Regional Land Partnerships - Australian Government

**\$1.82m**

The board is proud to partner with the Australian Government to deliver outcomes for the Regional Land Partnerships (RLP) program. This year, the board delivered Core Services, such as communications, regional planning, First Nations partnering and the Regional Agricultural Landcare Facilitator, and three projects: Healthy Soils Healthy Landscapes, Back from the Brink, and Threatened Orchids Recovery.

### Local Economic Recovery

**\$1.43m**

The board and Department of Primary Industries and Regions partnered to deliver the Building Back Better Agriculture and Land Management – Cudlee Creek Bushfire project. Co-funded by the South Australian and Australian Governments through the Disaster Recovery Funding Arrangements, this project is working to support Cudlee Creek landholders in fire recovery through soil, watercourse, and pest plant and animal management activities.

### Catchment Recovery

**\$1.05m**

The board partnered with the South Australian Government to distribute Catchment Recovery funding to fire-affected landholders. The project focusses on building property resilience, and restoring biodiversity and productive landscapes.

### Landscape Priority Fund

**\$1.5m**

South Australian Government funding to support the restoration of coastal and marine habitats for wildlife conservation, priority weed eradication through the Towards Eradication: 20 Weeds by 2023 project, and building community capacity through the Natural Resource Centres Building Capacity project.



## Your levies at work

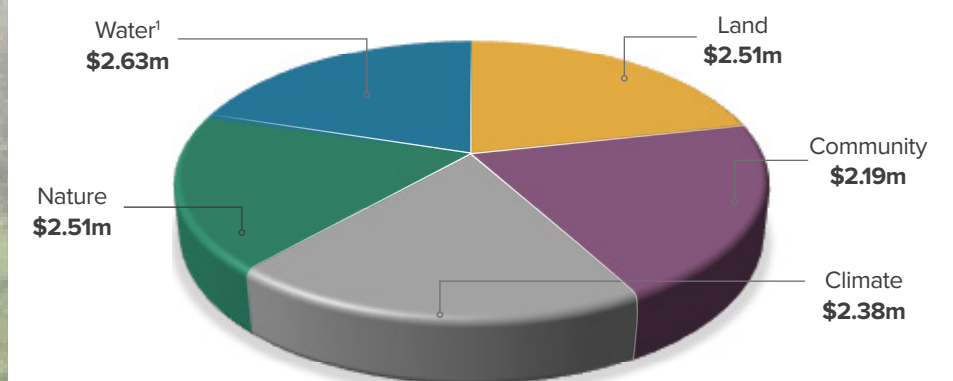
The board raises a **landscape levy** and a **water levy** to help and support our community to care for land, water and nature.

The board's **Annual Business Plan** sets out the projects, programs and services that the board invests in. The levies also enable the board to attract additional funding and support to increase the amount of work achieved in our region.

In 2021-2022, key programs included:

- supporting landholders to adopt sustainable land management practices (soils, pests, water, biodiversity)
- collaborating to manage emerging weeds, pests and impact-causing native species
- water allocation planning and implementation to support sustainable use of water resources
- involving First Nations, community groups, volunteers and landholders in restoration of landscapes.

### 2021-2022 Levy investment in 5 priorities



<sup>1</sup>This included \$1,439,300 as a contribution towards State water planning and management costs, including water licensing, water monitoring, compliance activities and policy advice to support the management of water resources.

## Connect with us



Ph: 08 8391 7500



Upper level, corner Mann & Walker streets,  
Mount Barker, SA, 5251



[landscape.sa.gov.au/hf](http://landscape.sa.gov.au/hf)



[facebook.com/HFLandscapeSA](https://facebook.com/HFLandscapeSA)



[youtube.com](https://youtube.com) (search 'Hills and Fleurieu Landscape Board')



[hf.landscapeboard@sa.gov.au](mailto:hf.landscapeboard@sa.gov.au)

