

Business Plan Achievement Report

4th Quarter 2020-2021

1 April to 30 June 2021

Eastern District






About

The Eyre Peninsula Landscape Board's [Business Plan for 2020-21](#) sets out the programs, and component sub-programs or work activities, which are funded and delivered by the Board to achieve the goals and vision of the [Regional Landscape Plan](#).

This *Business Plan Achievement Report* provides an update on delivery of all our Board-funded programs in the Eastern District during the last quarter. It includes reporting on the following for each sub-program:

- Program highlights;
- Local government engagement;
- Communications and community engagement undertaken; and
- Upcoming priorities for the next quarter.

Each sub-program is assigned a status, based on its current progress.

	On track to deliver key programs.		On track to deliver most programs. May be some delays.		Unlikely to deliver some program elements
---	-----------------------------------	---	---	---	---

For projects in the City Council of Whyalla and District Councils of Kimba, Franklin Harbour and Cleve areas, further details of our work and programs can be found on the [Eyre Peninsula Landscape Board website](#) or by contacting **Tim Breuer** (*Team Leader, Landscape Operations - Eastern District*) on 0488 000 481.

Note: For updates about delivery, in the Eastern District, of Regional Projects such as the [Regenerative Agriculture Project \(RAP\)](#) and the [Saltmarsh Threat Abatement and Recovery \(STAR\) Project](#) refer to the *Business Plan Achievement Report: Regional Projects*.

Contents

Sustainable agriculture	1
District level sustainable agriculture activities	1
Delivering the NLP Smart Farm Mallee Seeps Project	1
Water resources management	3
Pest plant and animal control	3
Other stewardship	7
Grassroots Grants program	9

Sustainable agriculture

Sub-program	Status
District level sustainable agriculture activities	
Delivering the National Landcare Program (NLP) Smart Farm Mallee Seeps Project	

For updates on our [Regenerative Agriculture Project \(RAP\)](#) and Regional Agriculture Landcare Facilitator (RALF) services, please refer to the **Business Plan Achievement Report: Regional Projects**.

More information about our sustainable agriculture program, as well as useful information and resources for land managers can be found [here](#).

District level sustainable agriculture activities

Program highlights this period

Support for Department for Environment and Water (DEW) erosion potential surveys

A transect through central and eastern Eyre Peninsula is periodically monitored throughout the year to assess the potential for wind and water erosion. Potential for erosion is assessed based on the level of soil cover in paddocks along the transect. The latest survey was carried out during the period when the least amount of soil cover is expected, and it was found that generally soil cover levels are still adequate for protection against erosion. This is very good news, considering that in most areas drier than expected conditions have been experienced throughout autumn.

Upcoming priorities for the next period

- Continue to monitor areas identified as at risk to erosion throughout the growing season. This will be done to ensure that cover is established on vulnerable soils while conditions are suitable.
- Where required, provide support to landholders to establish soil cover.

Delivering the NLP Smart Farm Mallee Seeps Project

The Australian Government, through the National Landcare Program, have funded the [Overcoming the Rising Degradation of Mallee Seeps on Eastern Eyre Peninsula](#) project. Land managers are increasingly identifying Mallee seeps as a growing land degradation issue on the EP. Mallee seeps severely change pH and the chemical composition of soil, forcing areas of paddocks out of production. This project aims to increase farmers' awareness about Mallee seeps, and build capacity to detect and manage Mallee seep formation in their paddocks before land degradation occurs. The project will connect landholders to relevant scientific data and identify known management options that are best suited for the EP. Local trials and demonstrations will determine suitable practical treatments that can be applied by land managers in line with best practice sustainable agriculture to reduce the effects of saline seeps on the EP.

Program highlights this period

- **Filming trial sites with Missing Link Media**

A series of Mallee seeps films documenting the issues, treatment and outcomes at the four Mallee seep trial sites is being developed. Filming of the trial sites by Missing Link Media began on 16 June. Dr Chris McDonough features in the films, providing explanations of what is occurring at each trial site.

- **Monitoring and data collection**

Dr Chris McDonough has completed another round of monitoring, collecting data from each trial site. Monitoring of salinity and depth of water table, as well as soil sampling and analysis is being undertaken at each trial site. Photopoint monitoring is also being conducted to document progress with remediating each site. All data will contribute to the overall findings and report which will be compiled on completion of the project.

- **Advice to landholders**

Several landholders not involved in the project trials have also been able to connect with Dr Chris McDonough. He has assisted them with suggestions for remediation actions to trial on their farms which have seeps that are either well established or with emerging issues. Chris is able to help the farmers identify if salinity issues are true Mallee seeps, or whether they are potentially related to creek-lines and drainage, or are potentially more of a dryland salinity issue. All of these salinity issues may require differing remediation practices depending on individual circumstances, so advice provided by experienced professionals like Dr Chris McDonough is invaluable to individual landholders.

Upcoming priorities for the next period

- Completion of on ground works at the trial sites, including planting of lucerne, *Puccinellia* spp. and other salt tolerant plants use to help lower the perched water table.
- Planning for spring crop walks to showcase the Mallee seeps trial sites.
- Preparation of the mid-term project report.



*Photo 1:
Dr Chris McDonough is assisted by a
landholder to take soil samples for analysis
at one of the Mallee seep project trial sites.*

Water resources management

Sub-program	Status
District level rivers and creek restoration activities, water quality testing etc.	

For updates about water resources management activities implemented in the Eastern District as part of the [Saltmarsh Threat Abatement and Recovery \(STAR\) Project](#) and the [Regenerative Agriculture Project \(RAP\)](#) refer to the **Business Plan Achievement Report: Regional Projects**. Updates on work related to Water Affecting Activities and the Water Allocation Plan can be found in the same report.

Nothing to report.

Pest plant and animal control

Sub-program	Status
Monitor and facilitate management of priority pest plants and animals	

For updates about pest plant and animal control activities implemented in the Eastern District as part of the [Saltmarsh Threat Abatement and Recovery \(STAR\) Project](#) refer to the **Business Plan Achievement Report: Regional Projects**. Updates on development of our regional pest management plans can be found in the same report.

Program highlights this period

Pest plants



Compliance

- Whyalla City Council completed Stage 1 of their voluntary compliance declared weed control on Hummock Hill and Flinders Lookout. More than 1,000 **Carrion Flower** plants have been treated at both sites, and plans have been made to spray out **Fountain Grass** and **Buffel Grass** on Hummock Hill when these species are actively growing in the summer months.



Photo 2:
Whyalla City Council have commenced control work on **Carrion Flower** infestations on Hummock Hill and Flinders Lookout. The hard to kill Carrion Flower plants have been treated by brushing with a 50/50 glyphosate and water solution. Carrion flower seed spreads easily by wind and gets caught in native vegetation. Once established it can kill surrounding vegetation by robbing it of water.



Photo 3:
Fountain Grass control at Holcim Quarry



- Holcim Quarry have completed Stage 1 of their voluntary compliance **Fountain Grass** control program. Windy conditions in Whyalla delayed spraying until late April, but as the Fountain Grass was still green and actively growing it was still possible to spray it out before winter. Holcim Quarry employed the contractor *Augusta Pest & Weed Control* to undertake the control work. A mix of flupropanate, glyphosate, and pine oil was used, as recommended by landscape officers. A pink dye was mixed with the herbicide to show where the Fountain Grass has been treated (see Photos). Follow-up slashing will be carried out after dieback occurs, and repeat spraying will be carried out on any regrowth in late spring/early summer.
- The Red Alert (Category 1) declared aquatic weed ***Salvinia molesta*** was reported for sale at a community plant nursery in Whyalla. Plants were removed and destroyed by landscape officers, with nursery staff assisting voluntary compliance. *Salvinia* fact sheets have been provided to the nursery for customers. Members of the public are urged to contact local landscape officers for advice if they find the weed growing in backyard fishponds.

Photo 4:

Red alert declared weed ***Salvinia molesta*** detected at a Whyalla plant nursery. *Salvinia* is regarded as one of the worst weeds in Australia, and is listed as a Weed of National Significance (WoNS). Transport and sale are prohibited, plants must be destroyed, and presence of this aquatic weed must be reported to authorities.



- Inspections were carried out at two residential properties following reports from the public, and notification letters were sent to residents to control declared weeds.

Control work

- **Fountain Grass** - 281 plants were treated during revisits to known sites around Whyalla, including roadsides around Whyalla's industrial estate and golf course.
- **Buffel Grass** - 100 plants were treated at a new site in Whyalla, located at the rear of the UniSA campus near the student accommodation.
- **African Boxthorn**
 - Twenty-two plants were treated at new sites around Whyalla, mostly on roadsides around Whyalla's industrial estate and golf course.
 - An Eyre Peninsula contractor was employed to survey the Lincoln Highway roadside from Whyalla to Arno Bay (~300 km) for African Boxthorn, treating infestations by spraying with glyphosate/flupropanate or using cut and swab control method. This has been a huge undertaking with a great outcome for the district. A significant stretch of roadside, with some sections heavily infested with African Boxthorn, has now been surveyed and treated. Many community members and farmers have expressed that they are very happy with the works undertaken.

Plant identification

- Herbarium identification of a grass collected in the Waddikee area was ***Panicum hillmanii*** (Witch-grass). It is very common on roadsides and there are many species of *Panicum* that are very similar in appearance and many are native. This detection is of no concern.
- Two grass samples collected by Council staff in Whyalla and by a landowner in the Kimba area are pending herbarium identification.



Photo 5: **African Boxthorn** found growing in a residential backyard in Whyalla. Property owners and lessees are required under the Landscape SA Act to control declared weeds growing on their property



Photo 6: **Fountain Grass** re-visit site in Whyalla (sprayed in Dec 2020) shows landscape officers have achieved a successful knockdown using a mixture of flupropanate, glyphosate, and pine oil which acts as a surfactant and suppresses seed germination



Photo 7: Landscape officer treating a **Buffel Grass** infestation behind the University in Whyalla

Photo 8:
Herbicide foliar spraying and
cut and swab methods were
used by pest control contractor
to tackle **African Boxthorns** on
both sides of the Lincoln
Highway (300 km stretch) from
Whyalla to Arno Bay

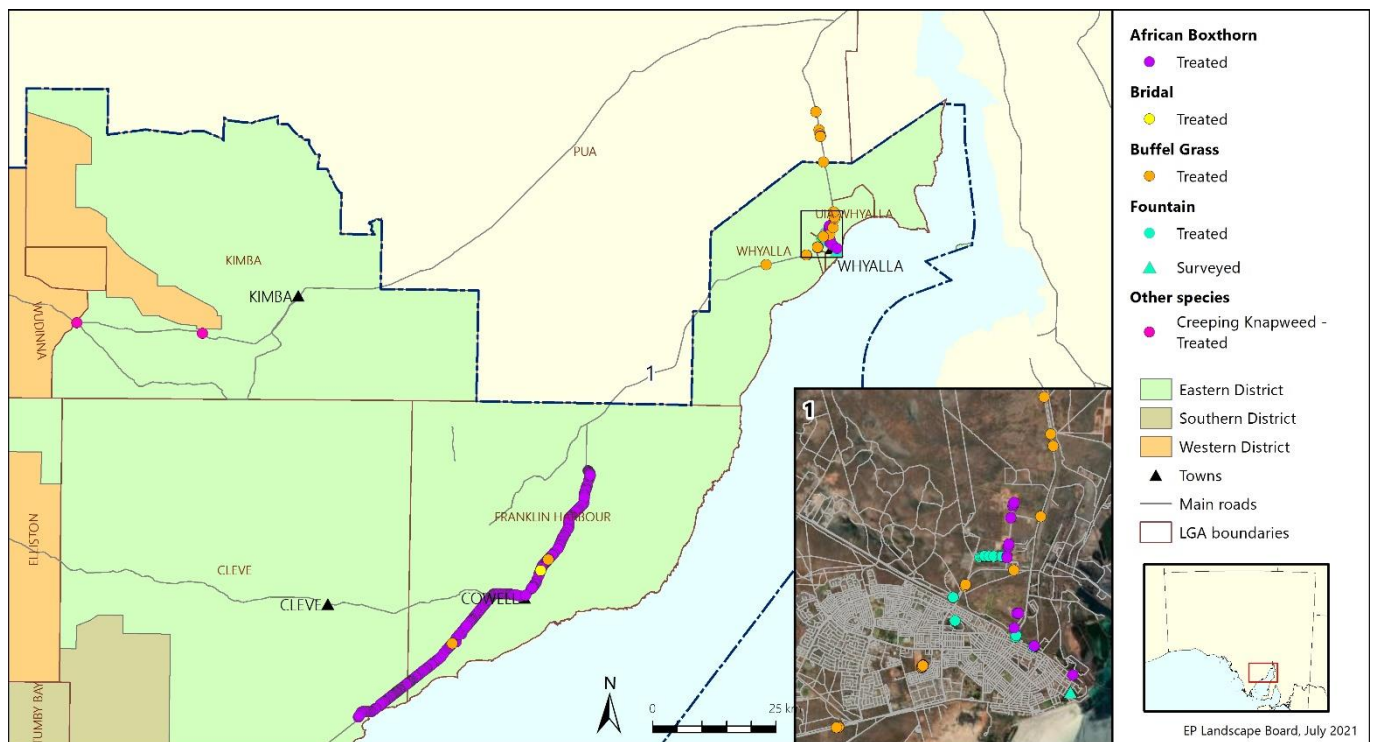


Figure 1: Priority pest plant control for the period 1 April to 30 June 2021

Pest animals

• Foxes

- Eight hundred and twenty (820) fox baits were distributed to landholders this quarter.
- Fox baits are available free of charge to landholders at the Cleve and Whyalla offices by appointment.

• Rabbits

- Two baitlayers for rabbits have recently been serviced and one was loaned to a landholder in the Kimba area.
- Two more baitlayers are in the process of being repaired and serviced.

- Forty kilograms (40 kg) of 1080 poison oats were distributed to a landholder in the Kimba area for rabbit control.
- 1080 poison oats for rabbit control are available to landholders for purchase from the Cleve and Whyalla Offices by appointment.
- **Deer**
 - Deer fencing and ear tagging were inspected at *Eyre Reptile and Wildlife Park*. They were found to be compliant with all requirements.

Local government engagement for this period

- A Memorandum of Understanding (MOU) has been negotiated between Whyalla City Council and the Eyre Peninsula (EP) Landscape Board for the shared use of the chemical shed at the Council Depot, and for EP Landscape Board to carry out weed control work on Council land.

Communications and community engagement for this period

- A '[Grow Me Instead](#)' presentation was given to the *Cowell Seed and Plant Exchange Group* at the Cowell Community Library, 22 June 2021. The presentation included information about invasive plants in South Australia and appropriate alternative native plant choices for gardens.

Upcoming priorities for the next period

- A media release about African Boxthorn is planned, with a call to action from landholders in controlling this pest plant, especially in priority areas such as properties on major roads and along coastal strips.

Other stewardship

Sub-program	Status
District level landscape management activities (coastal management, restoration, conservation, threatened species and ecological communities, citizen science etc.)	

For updates about delivery of the [Saltmarsh Threat Abatement and Recovery \(STAR\) Project](#) across the region, including the Eastern District, refer to the **Business Plan Achievement Report: Regional Projects**.

Program highlights this period

- EP Landscape Board provided support for Cuttlefest, including supporting *Experiencing Marine Sanctuaries* (EMS) and National Parks and Wildlife SA (NPWSSA) in delivering *School Snorkels* during June and ongoing into July. Schools that participated in the *School Snorkels* included Cleve Area School, Cowell Area School, Edward John Eyre High School, Kimba Area School, Samaritan College, Stuart High School, and Whyalla High School.



Photo 9:

Whyalla City Council and Eyre Peninsula Landscape Board Staff visit Port Lincoln to look at coastal campsite infrastructure to assist the Eyes on Eyre strategy for the development of Whyalla's Northern Coastline.

Local government engagement for this period

- Landscape staff are assisting Whyalla City Council with developing their *Eyes on Eyre* strategy, which is aimed at improving outcomes for the environment and visitors to the Eyre Peninsula. This support has included liaison, site visits and leading a delegation of Council staff on a field trip to Port Lincoln to look at coastal campgrounds designed to protect the environment and enhance visitor experience. Whyalla City Council won a \$2 million grant from state government for their \$4 million *Cuttlefish Coast Sanctuary Tourism and Environmental Management Project* for upgrading tourism infrastructure Whyalla's Northern Coastline including coastal campgrounds to be delivered over the next two years.

- Landscape officers attended the monthly *Northern Coastline Working Group* meetings.
- Landscape officers participated in Whyalla Cuttlefest Festival Planning Meetings and are contributing to the Cuttlefest program of events with Citizen Science and School Activities and Saltmarsh Discovery Tours.

Communications and community engagement for this period

- Native coastal tree seedlings were distributed to shack owners on the Northern Coastline as part of an on-going '*Grow Me Instead*' initiative. Eighty seedlings were received by shack owners to plant in coastal shack gardens.
- Support was provided to TAFE SA Whyalla garden staff to select local native species for TAFE gardens.
- NAIDOC Week '*Heal Country*' event and [media release](#) (29 June 2021)
EP Landscape Board staff collaborated with staff from Nicolson Avenue Primary School, Whyalla High School, and NPWSSA on an outdoor excursion program for Nicolson Avenue Primary and Whyalla High School students inside the Cowleds Landing Sanctuary Zone at Eight Mile Creek Beach.
- Ongoing liaison and support was provided to researchers working on the University of South Australia's Bushfoods Research Project.
- The Northern Eyre Peninsula Parks around Whyalla have been featured as NPWSSA's Park of the Month in June and July. Landscape officers therefore participated in NPWSSA's Park of the Month planning meetings and contributed to the program of events with Saltmarsh Discovery Tours and the NAIDOC Week '*Heal Country*' event with schools.
- A '*Grow Me Instead*' presentation was made to Cowell Seed and Plant Exchange Group at the Cowell Community Library. The 16 attendees were made aware of the potential of garden escapees to become pest plants and declared weeds, what not to grow, and why it is best to choose native species.

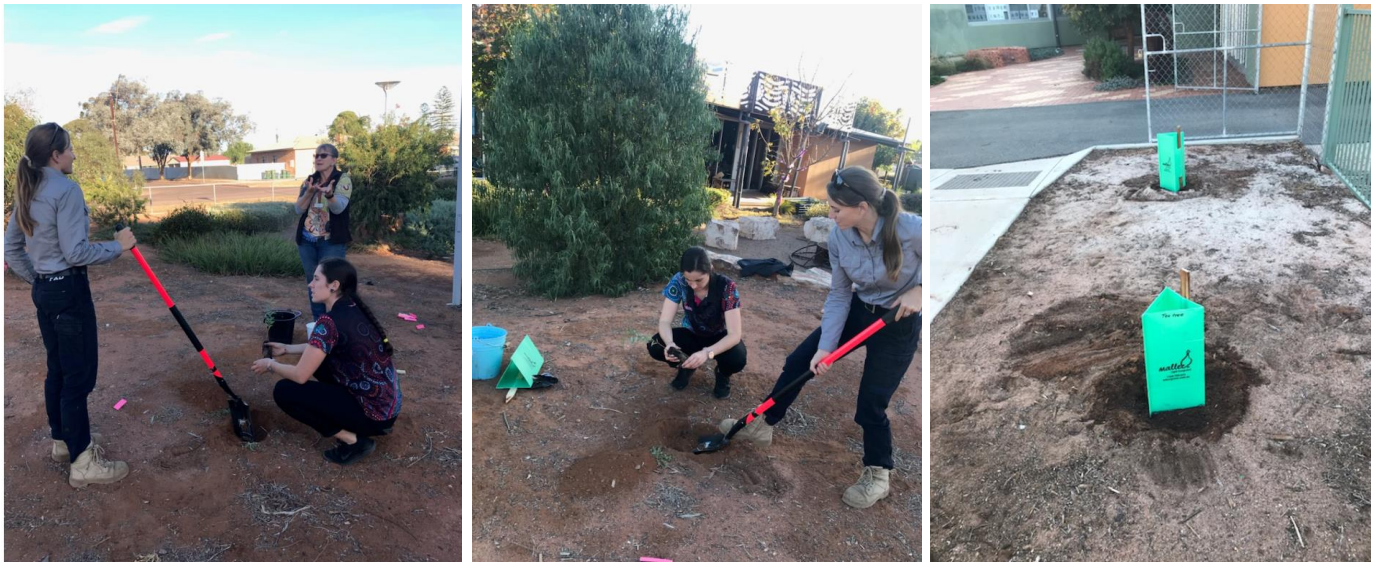


Photo 10: Drought tolerant local native trees planted at Hincks Avenue Primary School and Gabmididi Manoo Children and Family Centre, including Yorrell (Eucalyptus), Western Myall, Dryland Tea Tree, and Quandong.

- Landscape staff have been engaged with Hincks Avenue Primary School and adjoining Gabmididi Manoo Children and Family Centre around local native plant species, and ten trees were planted on schools grounds.

Upcoming priorities for the next period

- Ongoing support will be provided for:
 - the Whyalla Cuttlefest, snorkelling and program of events.
 - NPWSSA Northern Eyre Peninsula Park of the Month (Whyalla Conservation Park, Cuttlefish Coast and Cowleds Landing Sanctuary Zone).

Grassroots Grants program

Sub-program	Status
Support to grant applicants, monitoring of grants awarded and acquitted	

*This section provides information about the delivery and acquittal of Grassroots Grants in the Eastern District, and support provided by Board staff to grant applicants. For updates about the [Grassroots Grants](#) application process, successful applicants the award of Grants, and overall management of the Grassroots Grants program, refer to the **Grassroots Grants program** section in the **Business Plan Achievement Report: Regional Projects**.*

Program highlights this period

Buckleboo Farm Improvement Group – RAPPA purchase

- The Buckleboo Farm Improvement Group (FIG) have purchased a temporary electric fence unit and RAPPA system for trial and use by local farmers and group members. The RAPPA system is a unit used with a quad bike for easy set up and pack up of the temporary electric fence unit.

Whyalla City Council Northern Coastline Track Closure Project

Closure and rehabilitation of informal tracks made by 4WD and all terrain vehicles in the Northern Coastline region. Works include blocking tracks with rock, ripping tracks and planting native trees.

- Track closure and ripping works were completed by a local contractor.
- Holes were dug and watered ready for planting of native tree seedlings by volunteers during a community tree planting day.
- Follow-up watering of trees is being carried out.
- Health checks of the tree seedlings has been done, and a 100 % planting success rate has been recorded, with all seedlings surviving and trees already outgrowing tree guards.

Society of Precision Agriculture Australia Virtual Bus Tour

The creation of an online resource or "Virtual Bus Tour", which showcases how local growers have implemented best management practice on their farms, and provides the opportunity for farmers to connect and learn from each other virtually.

- The Society of Precision Agriculture Australia (SPAA) have completed developing the Virtual Bus Tour, which went live in June, and can be accessed [here](#).
- The Virtual Bus Tour features case studies from three Eyre Peninsula farmers; Chad Glover of Yeelanna, Tim Polkinghorne of Lock, and Bruce Heddle of Minnipa; and their top tips for starting use of precision agriculture.



Photo 11: Farmer Chad Glover, one of the Eyre Peninsula farmers featured in the SPAA Virtual Bus Tour.

Local government engagement for this period

- On-going liaison with Whyalla City Council and support was provided by landscape officers for the **Whyalla City Council Northern Coastline Track Closure Project**.
- Landscape officers have supported enquires from Councils about applications for the 2021-22 Grassroots Grants round.

Communications and community engagement for this period

- Landscape officers have supported community enquiries about applications for the 2021-22 Grassroots Grants round.

- Landscape officers coordinated a Community Tree Planting Day (18 April) with volunteers from the Whyalla Harriers Running Club, shack owners, and tourists as part of the **Whyalla City Council Northern Coastline Track Closure Project**. Two hundred trees grown by local Whyalla 'Trees for Life' volunteer were planted at the Point Lowly and Windy Loo campgrounds on Whyalla's northern coastline.
- Cowell Seed and Plant Exchange Group
A Grassroots Grants project case study was presented to the group and the potential for future Grassroots Grants projects for the group were discussed. Possible projects for this new establishing group include a weed removal, revegetation and reinvigoration project for the ELSNOR Flora Park adjacent to the Cowell Area School and Community Library.



Upcoming priorities for the next period

- All reporting on the 2020-21 Grassroots Grants round will be completed.
- The 2021-22 Grassroots Grants will be awarded and support provided to successful applicants for the initiation of projects.



Photo 12: Whyalla Harriers running club, shack owners and tourists pitched in to help plant trees around Point Lowly and Windy Loo campgrounds on Whyalla's northern coastline.

Published by the Eyre Peninsula Landscape Board.
09 July 2021

T: +61 (8) 8688 3200
E: EPLBAdmin@sa.gov.au

Report prepared by:
Eyre Peninsula Landscape Board

www.landscape.sa.gov.au/ep/home



With the exception of the Piping Shrike emblem, other material or devices protected by Aboriginal rights or a trademark, and subject to review by the Government of South Australia at all times, the content of this document is licensed under the Creative Commons Attribution 4.0 Licence. All other rights are reserved.