

Business Plan Achievement Report

2nd Quarter 2020-2021

1 October to 31 December 2020

Regional Projects





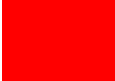
About

These *Business Plan Achievement Reports* provide a quarterly update on the delivery of our programs, as detailed in the Eyre Peninsula Landscape Board's [Business Plan for 2020-21](#). The *Business Plan* sets out the programs, and component sub-programs or work activities, which are funded and delivered by the Board to achieve the goals and vision of the [Regional Landscape Plan](#).

This *Achievement Report* provides updates on broader program management and planning across the Eyre Peninsula region in regards to our core programs; information about implementing the Water Allocation Plan, managing Water Affecting Activities and delivery of regional Federally-funded projects; and includes updates on our planning processes and general business support functions. For each sub-program the report covers:

- Program highlights;
- Local government engagement;
- Communications and community engagement undertaken; and
- Upcoming priorities for the next quarter.

Each sub-program is assigned a status, based on its current progress.

	On track to deliver all milestones.		On track to deliver most milestones. May be some delays.		Unlikely to meet milestones.
--	-------------------------------------	--	--	--	------------------------------

Further details of each of these programs can be found on the [Eyre Peninsula Landscape Board website](#) or by contacting **Susan Stovell** (*Manager, Planning and Engagement*) on 08 8688 3201.

Contents

Sustainable agriculture	1
Delivering the Regional Agriculture Landcare Facilitator (RALF) services.....	1
Delivering the region's Regenerative Agriculture Project	3
Water resources management	5
Implementation of the Water Allocation Plan (WAP)	5
Groundwater dependent ecosystem (GDE) monitoring	5
Pest plant and animal control	8
Other stewardship	9
Saltmarsh Threat Abatement and Recovery (STAR) Project	9
Delivering the RLP Fire Recovery Program	14
Development and maintenance of engagement strategies, plans and tools.....	15
Grassroots Grants program	17
Leadership and accountability	17
Development of the Landscape Plan, Business Plan and other supporting documents.....	18
Monitoring, evaluation and reporting on Landscape Plan priorities and contractual obligations (including Biodiversity Monitoring Program).....	19
Referrals (including stormwater management).....	20
Support to EP Landscape Board and committees, budget, annual report and Board minutes.....	20

Sustainable agriculture

Sub-program	Status
Delivering the RLP Regional Agriculture Landcare Facilitator (RALF) services	
Delivering the RLP Regenerative Agriculture Project	

Delivering the Regional Agriculture Landcare Facilitator (RALF) services

The Australian Government, through the National Landcare Program, have funded the Regional Agriculture Landcare Facilitator (RALF) with core funding for five years to June 2023. The RALF services are contracted to Agricultural Innovation and Research Eyre Peninsula (AIR EP).

Program highlights this period

Support and delivery

The RALF provided support for the delivery of a range of projects across the region:

- The Sustainable Agriculture Officer was assisted with the promotion of the small grants program and property visits.

- **EP Landscape Board's Australian Government National Landcare Program (NLP) funded Overcoming the Rising Degradation of Mallee Seeps on Eastern Eyre Peninsula project**

The RALF provide support for the Mallee Seeps project, and also assisted the landscape officer with property visits and establishment of testing equipment on trial sites.

- **Australian Red Cross Drought Program – Resilient Leaders Workshop**

The RALF worked with the EP Red Cross Drought Coordinator to deliver an online Resilient Leaders workshop. This workshop was aimed at advisors, landscape officers, the Department of Primary Industries and Regions (PIRSA) and South Australian Research and Development Institute (SARDI) staff. Recognising that people who are already active and involved in their own communities are best placed to assist those around them manage the challenges of living in dry times, the workshop supports participants to identify how they can play a role in building resilience in their community, explores tools to assist in supporting friends and family in dry times, and looks at ways to mobilise communities and connects participants to local organisations to support community connectedness.



Photo 1: Mount Cooper Sticky Beak day attendees visited the National Landcare Program funded Resilient EP soil moisture probe site near Port Kenny in October 2020.

Planning

- The RALF engaged with Ag Bureau leaders and farming group leaders across upper EP to plan post-harvest meetings for March 2021.

Conferences and events

The RALF attended the following conferences and events, building relationships both locally and nationally:

- National RALF teleconference; and
- Women Together Learning (WoTL) women's crops walk in Cummins.

Training

The RALF completed the following training:

- National online RALF Professional Development activities
- Facilitating Change in Agricultural Extension training.

Local government engagement for this period

- Nothing to report.

Communications and community engagement for this period

- Assisted with content for the Farmer Connect newsletter (Dec 2020)

Upcoming priorities for the next period

- Upper Eyre Peninsula Post Harvest Meetings 9-12 March 2021.
- Assisting with various events for EP growers during Feb and March 2021.



Photo 2: Women Together Learning (WoTL) lower EP crop walk held in September 2020, funded by Landscape SA Grassroots Grants, hosted by George and Lucy Pedler

Delivering the region's Regenerative Agriculture Project

The [Regenerative Agriculture Project \(RAP\)](#) on Eyre Peninsula is a five year (2018-2023) program funded through the Australian Government's National Landcare Program. The project aims to increase awareness, knowledge and the adoption of land management practices to restore soil pH levels, increase soil organic carbon levels and reduce the risk of nutrient loss from wind and water erosion. The project supports farming systems groups and individual farmers to implement best practice management, through extension activities, pH mapping, pH testing, demonstration sites, forums and monitoring sites. Results are showcased to the broader farming community. The program engages farmers across the Eyre Peninsula through paddock based demonstrations to reduce sub-soil constraints, increase soil organic carbon, and increase soil cover using winter and summer mixed species, thereby reducing nutrient and organic carbon loss. There are currently eighteen demonstration sites established across the Eyre Peninsula.

Mallee seeps are an increasing issue in eastern Eyre Peninsula. This project also aims to increase the understanding of the extent and impact of these seeps in the environment. Farmers and farming communities are supported through web-based mapping programs, forums, workshops and one-on-one support.

Project delivery is contracted to Agricultural Innovation and Research Eyre Peninsula (AIR EP), Rural Solutions SA, and other service providers as required.

Program highlights this period

- Josh Telfer has been appointed as the new Sustainable Agriculture Project Officer with AIR EP. His role is to facilitate continued delivery of the Board's sustainable agriculture program.
- Applications for another round in the RAP Mixed Species Crops and Pastures for Soil Management Demonstrations and Soil Carbon Demonstration sites were promoted and distributed to landholders across the region. In total six applications were received for this new round of grants.

Mixed species crops and pastures for soil management program

- *Round 5: Mixed species crops and pastures for soil management demonstration grants* was opened for applications and promoted, with applications distributed to landholders. Following consultation with AIR EP, three groups from across the region submitted applications for the grant (December 2020). An independent assessment of the applications will be conducted in January 2020.
- Staff made follow-up contact with grantees and conducted site visits to check on site progress, with a focus on recently established sites. Sites visited included the *PB10 Cleve* (summer sown) and *PB12 Ungarra* (spring sown) demonstration sites, where plants have germinated and established. At the *PB11 Tumby Bay* foothills demonstration site, plants have struggled to establish due to low rainfall since planting.



Photo 3: Farmers inspecting a multi-species cover crop demonstration on lower EP in October 2020

- Even though COVID restrictions made undertaking field events difficult, some multi-species sites were visited during various field days. During the Buckleboo Farm Improvement Group (BFIG) Sticky Beak Day the *PB9 Pinkawillinie* demonstration site was visited, the Crossville Ag Bureau visited *PB7 Cleve*, and the Advisor Client Group visited *PB5 Ungarra* (Photo 3).

Soil carbon demonstration sites

- Three applications for *Round 3 Regenerative Agriculture Program (RAP) soil carbon demonstration grants* were distributed. Applicants were consulted with, and three applications were received from groups across the region (December 2020). Independent application assessments will be conducted in January 2021.
- Follow up contact was made and site visits were undertaken, particularly with recently established demonstration sites, to check on site progress of the two programs.
- Harvest cuts were conducted at SC1 Waddikee demonstration site.
- The Buckleboo Farm Improvement Group Sticky Beak Day visited the SC3 Buckleboo demonstration site.

Mallee seeps project

- AIR EP organised and hosted a virtual soils meeting for EP practitioners to discuss current and planned projects around soil constraints, including Mallee Seeps.
- Assistance has been provided to the Board's NLP funded Mallee Seeps project, consultants and landholders.

Restoring soil pH project

- Preparation for upcoming *Farming Acidic Soil Champion Workshops* has begun with early notices/save the dates notices begin distributed. These workshops, aimed at supporting landholders to better manage acid soils, include information on causes of soil acidity, an introduction to mapping acid soils and measuring and treatment options.

Local government engagement for this period

- Nothing to report.

Communications and community engagement for this period

- Farmer Connect issues [number 9 \(September 2020\)](#) and [number 10 \(December 2020\)](#) were prepared and distributed.
- Two media releases were produced and distributed [Regenerative agriculture grants now open for EP farmers](#) and [Sustainable agriculture officer on board for EP](#).

Upcoming priorities for the next period

- The next round of workshops relating to the *Restoring Soil pH project* are coming up in the next period. These will focus on the Cleve Hills as an emerging area and lower EP as an existing area, and there has already been early registration and demand for the limited spots available.

Water resources management

Sub-program	Status
Implementation of the Water Allocation Plan (WAP)	
Groundwater dependent ecosystem (GDE) monitoring	
Water Affecting Activities (WAA) processed and managed	

Implementation of the Water Allocation Plan (WAP)

The Water Allocation Plan (WAP) for the Southern Basins and the Musgrave Prescribed Wells Areas, Eyre Peninsula, was endorsed by the State Government on 28 June 2016. The WAP guides the management the extraction of groundwater from wells within two Prescribed Wells Areas (PWAs). The Southern Basins PWA is located between Coffin Bay and Port Lincoln on southern Eyre Peninsula, and the Musgrave PWA is located between Lock and Elliston on western Eyre Peninsula.

If you would like more information on the WAP, you can download a copy of the Water Allocation Plan for the Southern Basins and the Musgrave Prescribed Wells Areas by clicking [here](#).

Program highlights this period

- The Water Allocation Planning meeting number 9 was held during this quarter. No issues were arising from this meeting.
- Project implementation has continued throughout the period.

Local government engagement for this period

- Nothing to report.

Communications and community engagement for this period

- Nothing to report.

Upcoming priorities for the next period

- Water Allocation Planning meeting number 10 will be held in February

Groundwater dependent ecosystem (GDE) monitoring

One of the objectives of the Water Allocation Plan (WAP) for the Southern Basins and Musgrave Prescribed Wells Areas (2016) is to minimise the impact of licenced taking of groundwater on ecosystems that depend on the prescribed groundwater resources. The Plan aims to maintain these ecosystems, collectively known as Groundwater Dependent Ecosystems (GDEs), at a low level of risk, and in the condition, and at the locations and extents they occurred at in 2016. Eyre Peninsula Landscape Board has therefore developed a program to establish a baseline and monitor changes in flora condition, groundwater level and salinity, at a group of GDEs within the Southern Basins and Musgrave Prescribed Wells Areas. More information about GDE monitoring, including report cards can be obtained [here](#).

Program highlights this period

- Monitoring (tree health, water level and rainfall) has continued at the five Red Gum GDE sites.
- Staff have finalised a plan to improve and expand the monitoring program for Wetland sites. This monitoring will continue in 2021 and involve the use of a drone.

Local government engagement for this period

- Nothing to report.

Communications and community engagement for this period

- Nothing to report.

Upcoming priorities for the next period

- The 2020 GDE monitoring Report Cards for the five Red Gum sites will be completed as soon as possible and made publically available on the Eyre Peninsula Landscape Board website. A social media story will also be posted about this achievement.
- Finalise the monitoring for the GDE Wetland sites.



Photo 4: Staff undertaking Red Gum monitoring at Bramfield

Water Affecting Activities (WAA) processed and managed

Water Affecting Activities (WAA) are activities and works that can impact on the health and condition of water resources, water dependent ecosystems and other water users. Under the Landscape South Australia Act 2019, an approved permit is required to undertake a Water Affecting Activity.

Information for those planning to undertake a Water Affecting Activity is available in the factsheet [Permits - Water Affecting Activities](#) and the region's Water Resources Assessment Officer is always available to advise and help.

Program highlights this period

- The work related to Water Affecting Activities (WAA) has been undertaken by Board staff during the 2nd quarter 2020-21:
 - Seven WAA permit applications were received and 4 approved. These include permit approvals for vehicle crossings, new stock water dams, and saline drainage to help manage waterlogging and salinity issues.
 - Five inspections of WAA completed works have been undertaken.
 - Two active compliance issues are being addressed.
 - Twenty four water salinity/pH tests were completed for landholders at the Port Lincoln Board office.
 - Seventeen WAA enquiries were received and addressed.
- Cummins Wanilla Basin Drainage Management Plan
Board staff continue to contribute to the implementation of this plan. Work is now progressing to the stage where requests for expressions of interest for delivery of elements of the plan are being sought.
- A **Staff WAA Transition Plan** has been developed to strengthen and expand the support Board staff can give with respect to WAA. The plan entails upskilling regional Authorised Officers, training them so that they can undertake assessments of Water Affecting Activity Permits and other water resources tasks. Implementation of the transition plan has commenced, with training of all relevant staff completed.

Local government engagement for this period

- Nothing to report.

Communications and community engagement for this period

- Twenty four water salinity/pH tests were completed for landholders at the Port Lincoln Board office.
- Seventeen WAA enquiries were received and addressed.
- The WAA information on the Board's website has been updated.

Upcoming priorities for the next period

- The following work will be ongoing in the next quarter:
 - WAA permit application processing;
 - WAA enquiries fielded and responses provided;
 - WAA compliance cases investigated;
 - completion of WAA works inspections; and
 - regional water testing undertaken and support provided.

- Staff will continue to work with local government on any WAA / field based water resources issues.
- Board staff will continue to provide support for the Cummins Wanilla Basin Drainage Management Plan project.
- The implementation of the Staff WAA Transitions Plan will be ongoing, with regional staff assuming duties related to processing and managing WAA activities while receiving ongoing support from the Port Lincoln staff.

Pest plant and animal control

Sub-program	Status
Pest management plans	

The Eyre Peninsula Landscape Board works closely with land managers to find ways of reducing the number of pests, help restore native biodiversity and reduce losses in the agricultural industry. As part of the pest management program, the Board has developed twenty-one pest management plans for the management of priority pest plants and animals across the region. Here we report on region-wide and high level activities contributing to the achievement of the objectives of the pest management plans including, but no limited to:

- *Attendance at state-wide pest animal and plant network meetings and South Australian Wild Dog Advisory Group (SAWDAG) meetings.*
- *Relevant presentations to the Board by external organisations such as PIRSA.*
- *Higher level progress towards pest management plans implementation and review.*
- *Development of district actions plans.*
- *Delivery of cross district control programs.*
- *New incursions or potential threats to the region at a high level.*
- *New trials or research.*

Detailed reporting against the objectives of the pest management plans will also be provided annually in this section of the fourth quarter Business Plan Achievement Report.

*Implementation of actions identified in the current twenty one pest management plans is ongoing. Please refer to the **Pest plants and animals sections** in the district [Business Plan Achievement Reports](#) for key progress, operational activities and achievements.*

More information about pest plants and animals on the Eyre Peninsula, and links to the EP landscape board pest management plans can be found [here](#).

Program highlights this period

- Attendance at the State wide Wild Dog Advisory Group Meeting.
- A review of the pest animal and plant assessment matrix commenced this quarter. The assessment matrix is a scoring system used to prioritise pest species for strategic management and will guide the Board's direction on priority pest species.

- Continued progress was made in updating pest management plans.
- PIRSA Biosecurity presented at Board meeting number 5 in the Biosecurity Act.

Local government engagement for this period

- Nothing to report.

Communications and community engagement for this period

- Nothing to report.

Upcoming priorities for the next period

- Completion of the pest animal and plant risk assessment matrix.
- Continue to progress updating pest management plans.

Other stewardship

Sub-program	Status
Delivering the RLP Saltmarsh Threat Abatement and Recovery Project (STAR)	
Delivering the RLP Fire Recovery Program	
Development and maintenance of engagement strategies and plans	

Saltmarsh Threat Abatement and Recovery (STAR) Project

The [Saltmarsh Threat Abatement and Recovery \(STAR\) Project](#) is being delivered thanks to funding from the Australian Government's National Landcare Program (NLP). The project focuses on temperate saltmarshes, part of a nationally Threatened Ecological Community, and the Hooded Plover, one of Australia's top 20 threatened fauna species. The project will be delivered until 2023. Priority works include access management, threat abatement, revegetation, weed management, improving hydrological flows, and removing marine debris. More information about the project can be found [here](#).

Program highlights this period

Eastern District

Beach nesting birds

- Two BirdLife Australia's National Hooded Plover Biennial Count surveys were conducted. At the Poverty Bay site sixteen red capped plovers, twelve red-neck stints, five crested terns, three hooded Plovers and one sanderling were recorded. At the Redbanks site three Hooded Plovers and a red cap plover were sighted.
- Monitoring of priority Hooded Plover nesting sites by landscape officers (Redbanks) and a volunteer (Port Gibbon) was ongoing. Three Hooded Plovers were resident at Redbanks in October-November, reducing to a pair in December. No nesting was observed.



Photo 5: Three Hooded Plovers foraging at Redbanks beach



Photo 6: A pair of Hooded Plovers sighted at a known breeding site along the Redbanks beach

Saltmarshes

- The District Council of Cleve has been engaged to discuss potential culvert development to improve hydrological flows and tidal connection in the nationally threatened temperate coastal saltmarsh at Arno Bay.
- Sediment Elevation Table (SET) monitoring was carried out by Landscape Officers at Cowleds Landing (Eight-Mile Creek) as part of the blue carbon sediment coring and carbon accumulation monitoring project led by University of Adelaide researchers.
- A local fencer was contracted to fence 740 ha of good condition saltmarsh on Crown land south of the Cowleds Landing shacks to protect it from off-road four-wheel drive and motorbike damage that is spreading along the coastline from Whyalla to Cowleds Landing.
- Cut and swab control of African Boxthorns was undertaken in a buffer zone around the Arno Bay saltmarsh. Approximately 1,000 plants were manually treated over a 10 ha area.



*Photo 7:
Potential site for culvert in Arno Bay saltmarsh*



Photo 8:
Sediment Elevation Table monitoring instruments at Cowleds Landing (Eight-Mile Creek). Data collected will contribute to a report by Adelaide University on blue carbon stocks, comparing this site to other sites in our region and other regions of South Australia



Photo 9: Boxthorn control work being carried out at Arno bay using cut and swab method

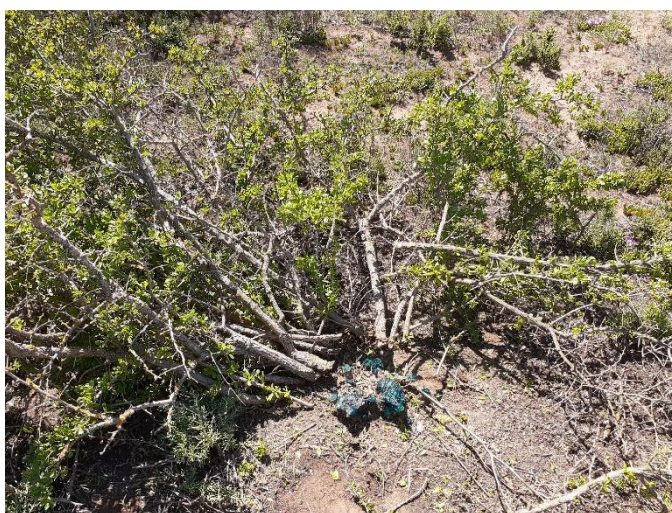


Photo 10: Boxthorn cut and swab treatment with Vigilant herbicide

Western District

Beach nesting birds

- Forty survey routes were covered in the *BirdLife Australia's National Hooded Plover Biennial Count*. Routes ranged from Sheringa in the south to Fowlers Bay Conservation Park in the far west. St Peter's Island, Smoky Bay, Eyre Island, Venus Bay and the islands, were also surveyed via boat by staff and volunteers. The counts took place from the beginning of November to mid-December.
- There has been ongoing fortnightly monitoring of six Hooded Plover Breeding sites in the Western District. One fledgling Hooded Plover was



Photo 11: Landscape officer surveying beach nesting birds at Eba Island as part of BirdLife Australia's National Hooded Plover Biennial Count

recorded at Entrance Beach, Venus Bay Conservation Park and one fledgling at Surfers Beach, Scealess Bay.

- Beach Nesting Bird signage was installed at a breeding site at Eba Island, near Streaky Bay, to address vehicle and foot traffic threatening oyster catcher chicks on the beach.
- Ongoing remote camera monitoring for feral predators is being undertaken throughout Venus Bay Conservation Park to support management of the Entrance Beach Hooded Plover Breeding site



Photo 12: Red Capped Plover chick

Southern District

Beach nesting birds

- Surveys were completed for the *BirdLife Australia's National Hooded Plover Biennial Count* across the Southern District .
- Fortnightly monitoring of priority Hooded Plover nesting territories was ongoing.
- Remote sensing cameras were deployed at priority Hooded Plover nesting territories to further explore threats present and beach use.
- Staff liaised with landholders adjacent to priority STAR Hooded Plover nesting territories to implement coordinated fox baiting and trapping.



Photo 13: Beach Nesting Bird educational signage installation at Eba Island, Streaky Bay

Saltmarshes

- A spiny rush (*Juncus acutus*) control trial was completed at a priority saltmarsh site, Second Creek, at Tumby Bay.
- Boxthorn control was implemented around a priority saltmarsh site, Second Creek, at Tumby Bay.

Local government engagement for this period

Eastern District

- The District Council of Cleve has been engaged to discuss potential culvert development to improve hydrological flows and tidal connection in the nationally threatened temperate coastal saltmarsh at Arno Bay.

Western District

- Nothing to report.

Southern District

- Discussion were held with Tumby Bay District Council and works approvals completed for priority intervention work at STAR Hooded Plover monitoring sites.

Communications and community engagement for this period

Region

- Close contact was maintained with BirdLife volunteers to support territory monitoring across the region.
- Staff worked with volunteers to complete surveys for the *BirdLife Australia's National Hooded Plover Biennial Count*.

Upcoming priorities for the next period

Region

- Continued coordination and implementation of Hooded Plover territory monitoring across priority STAR nesting territories.
- In February staff will participate in and help coordinate *BirdLife Australia's National Shorebird Monitoring* (former Shorebird 2020 project) surveys.

Eastern District

- Arno Bay culvert works to improve hydrological flows and tidal connection will be progressed.
- New Hooded Plover signage will be installed at Redbanks beach.
- A *Saltmarshes and Shorebirds* education resource for school workshops will be developed.
- A short educational film on the off-road vehicle damage threat to threatened saltmarshes will be developed.

Western District

- A *Gazania* control trial will be implemented in the Blanchepoint samphire area.
- Saltmarsh remediation will be implemented at a private property, Smoky Bay.



Photo 14: BirdLife Australia's National Hooded Plover Biennial Count volunteers completing a survey at Pt Boston



Photo 15: Hooded Plover nesting pair captured on remote sensing camera footage (1 adult incubating eggs)

Southern District

- Saltmarsh protection project to commence at Little Douglas.
- Fox baiting and cat control programs will be undertaken at priority Hooded Plover nesting territories.

Delivering the RLP Fire Recovery Program

Funded under the Australian Government's National Landcare Program, fire recovery works are being undertaken in the Middleback and Secret Rocks fire grounds which were impacted by the 2019 bushfires. Works include priority pest plant, pest animal, and overabundant native herbivore control, as well as controlling access and undertaking erosion management. The fire recovery program will assist the recovery of threatened species including Malleefowl, Sandhill Dunnarts, Chalky Wattle and Yellow Swainson Pea.

Program highlights this period

- The program has been delivered within scope, with the second quarterly report for 2020-21 submitted to the Australian Government.
- Overabundant herbivore (kangaroo), rabbit, fox and cat control is being undertaken on a monthly basis by a qualified contractor. This is difficult to implement across a fire ground, but is essential to allow vegetation to recover post fire, particularly for more palatable species. Monthly control will continue till at least June 2021.
- Staff have been assisting landholders to obtain funds from the Department for Environment and Water to replace heritage agreement fencing burnt in the fires.

Local government engagement for this period

- Nothing to report.

Communications and community engagement for this period

- Ongoing communication is occurring with four land managers affected by the fires.

Upcoming priorities for the next period

- Continue overabundant herbivore (kangaroo), rabbit, fox and cat control.
- Continue to support landholders to replace heritage agreement fencing burnt in the fires.



Photo 16: Photo taken in late August 2020. The fireground is struggling to recover with limited winter rainfall. Some large rainfall events occurred in late 2020 which will assist recovery

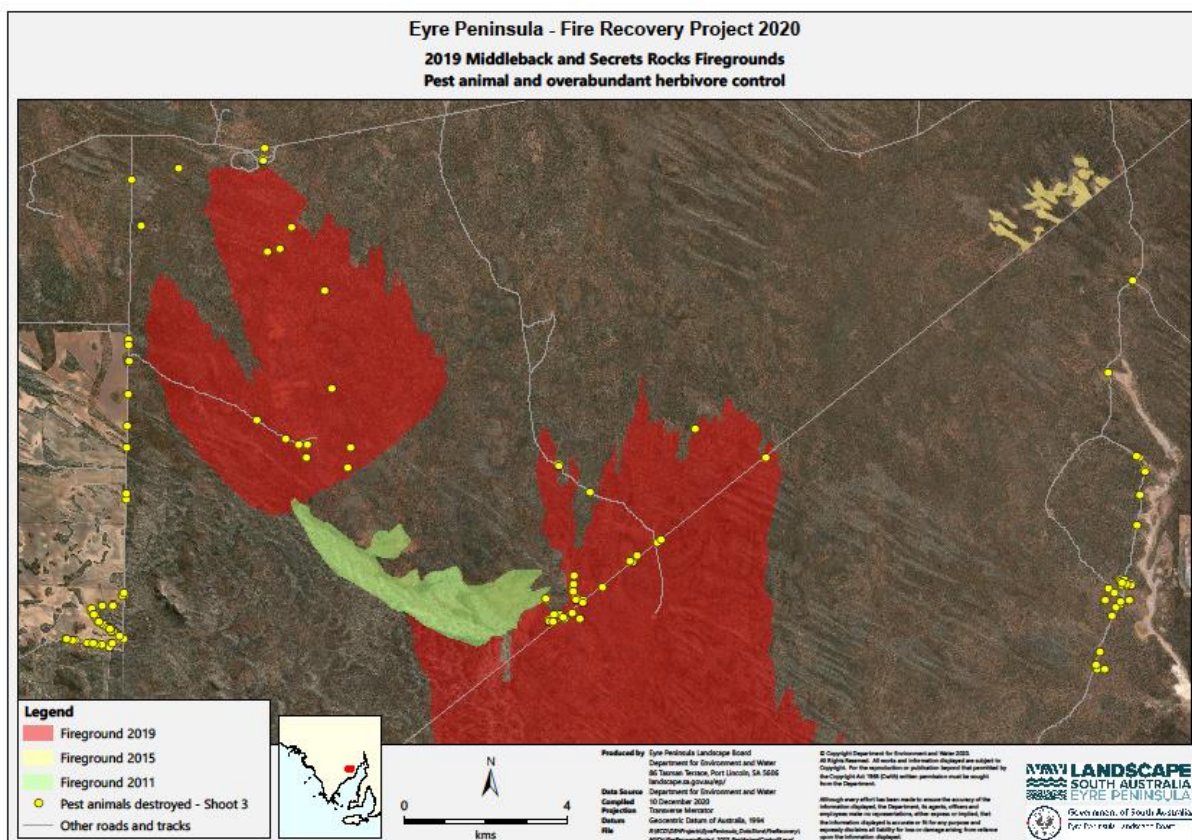


Figure 1: Pest control sites for the Oct-Dec 2020 period

Development and maintenance of engagement strategies, plans and tools

The Eyre Peninsula Landscape Board has developed a number of engagement strategies and plans which support the [Eyre Peninsula Regional Landscape Plan 2017-2027](#). These include the Overarching Communications Policy and Plan; and the following engagement strategies:

- [Local Government Engagement Strategy](#)
- [Aboriginal Engagement Strategy](#) and an internal Aboriginal Implementation plan
- [Education Engagement Strategy](#)
- [Citizen Science Engagement Strategy](#)

Activities undertaken in line with these strategies are reported under the **Local government engagement for this period**, and **Communications and community engagement for this period** sections in the regional and district quarterly reports.

Program highlights this period

- Work has commenced on the development of a new Landscape Plan for the region. The new plan will build on this previous engagement work undertaken to develop the former plan, with extreme care taken to retain the essence of what our community values most.

Local government engagement for this period

- Engagement with local government is guided through the Local Government Strategy, which the Board has just reviewed and updated. Evidence of this engagement can be found throughout the district reports.

- Section 7, Action 2 of the Local Government Strategy, requires Board Members to be assigned responsibility for specific councils. The intent is for Board Members to engage with their appointed Council/s prior to Board Meetings to gauge whether there are any matters that need to be raised for discussion and to follow up with the Council after the meeting.

The table below provides details of the Board Member assignments:

Board Member	Council Assigned to Board Member
Western District	
Steve Milner	District Council of Ceduna
Debbie May	District Council of Streaky Bay
Debbie May	District Council of Elliston
Justine Major	Wudinna District Council
Eastern District	
Mark Whitfield	City of Whyalla
Mark Whitfield	District Council of Kimba
Meagan Turner	District Council of Franklin Harbour
Meagan Turner	District Council of Cleve
Southern District	
Tony Irvine	City of Port Lincoln
Tony Irvine	District Council of Tumby Bay
Brian Foster	District Council of Lower Eyre Peninsula

Communications and community engagement for this period

- Nothing to report.

Upcoming priorities for the next period

- The draft Landscape Plan will be open for community feedback in March 2021 and the Board has developed a regional engagement statement to guide this process.

Eyre Peninsula Landscape Board OUR REGIONAL LANDSCAPE PLAN 2021-26 PLANNING APPROACH

OUR VISION

Eyre Peninsula landscapes support biodiversity, community and business in a changing climate.

OUR VALUES



Trust



Leadership



Collaboration



Accountability

OUR PLANNING COMMITMENT

- To listen to your views, value your knowledge and experience, and respect your values.
- To involve you in decisions that affect you.
- To seek to understand and collaborate with you to care for and build resilience in all landscapes.
- To evaluate and report to you about our progress.



Government of South Australia
Eyre Peninsula Landscape Board



Contact us Port Lincoln office ph: 8688 5111 | email: ep.landscapeboard@sa.gov.au | www.landscape.sa.gov.au/ep |
twitter.com/eplandscape | facebook.com/EPlandscapeSA/

Photo 17: Media for the new Regional Landscape Plan

Grassroots Grants program

Sub-program	Status
Grassroots Grants program established, evaluated and awarded	

*The Grassroots Grants program supports individuals, volunteers, community groups and other organisations working on a not-for-profit basis, with local landscape management projects. Grants are awarded annually. Reporting on support provided by Board staff to grant applicants, as well as monitoring of grants awarded and acquitted is included in the **Grassroots Grants program** sections in the district quarterly reports.*

Program highlights this period

- Nothing to report. The grassroots grants for the 2020-21 period have all been awarded to community and are all at various stages of delivery. Progress on these individual projects will be reported at the district level.

Local government engagement for this period

- Nothing to report.

Communications and community engagement for this period

- Nothing to report.

Upcoming priorities for the next period

- The next round of grass roots grants is likely to be called in April 2021.

Leadership and accountability

Sub-program	Status
Development of the Landscape Plan, Business Plan and other supporting documents	
Monitoring, evaluation and reporting on Landscape Plan priorities and contractual obligations (including Biodiversity Monitoring Program)	
Referrals (including Stormwater management) received and responded to	
EP Landscape Board and Committees supported, budget approved, annual report prepared and Board minutes available to public	

Development of the Landscape Plan, Business Plan and other supporting documents

The EP Landscape Board formally adopted the existing Regional NRM Plan, as the interim Landscape Plan, until the new Landscape Plan is developed for the region in May 2021. This plan, [The Eyre Peninsula Regional Landscape Plan 2017-2027](#), including components such as the regional descriptions and policy framework and is available for download on the EP Landscape Board [website](#) in separate components.

The strategic component of the Plan includes three goals, which are underpinned by six strategic priorities and provides a regional snapshot. The region has been divided into five sub-regional planning areas, and sub-regional descriptions have been developed as separate components to describe the landscapes, as well as the lifestyles and livelihood that influence how the landscape is managed in each of the areas. There is also a policy document that provides the policy framework for how land, pest plant and animals and water affecting activities are to be managed in the region.

The final component of the regional Landscape Plan is the Business Plan. The first Eyre Peninsula Landscape Board Business Plan was approved by the incoming Eyre Peninsula Landscape Board on 15 May 2020, and needs to read as an addendum the existing Business Plan for 2019-22, the latest version of which was approved on 27 March 2019 and is available on the [website](#).

Program highlights this period

- The Board has approved the approach that will be taken to develop the new Landscape Plan (the Plan), and work has commenced on the development of draft documents, which include:
 - **The Strategic Plan for 2021/26** - a high-level document outlining the vision, priorities and focus areas for the next five years.
 - **The Business Plan for 2021/22** – an annual plan that provides a snapshot of the Board’s proposed activities for the next 12 months, as well as income, expenditure and details of the landscape levy.
Note: The landscape levy will increase by 1% next year in line with CPI.
 - **The Sub-Regional Descriptions** – covering five sub-regions, these documents provide important information about how each system functions, the current state of the resources and community values.
 - **Policy documents** - including details of the Board’s water affecting activities, land management and pest plant and animal policies and procedures.

Local government engagement for this period

- Letters were sent to all 11 councils in the region in November, requesting updated information on the number and type of rateable properties in their council areas, and the council preference for cost recovery.

Communications and community engagement for this period

- Nothing to report.

Upcoming priorities for the next period

- All of the Plan documents detailed above will be available for community consultation in March 2021.

Monitoring, evaluation and reporting on Landscape Plan priorities and contractual obligations (including Biodiversity Monitoring Program)

A Monitoring, Evaluation, Reporting and Improvement (MERI) plan was approved on 17 April 2019 to enable the board to measure how effective it has been in achieving the goals in the strategic plan. In adopting the existing Regional NRM Plan as the interim Landscape Plan, the Board also adopted this existing MERI Plan as the interim MERI Plan. The MERI Plan guides monitoring, evaluation and reporting activities for the Board and the regional community.

As part of the MERI Plan, the Board established the Biodiversity Monitoring Program, in 2015-2016. This Biodiversity Monitoring Program will result in 355 sites across the region being monitored (using the Bushland Condition Monitoring methodology) on a ten year rotational basis. To supplement this important monitoring a Citizen Scientist network has been established to undertake annual bird surveys at some of these sites.

Program highlights this period

- Bushland Condition Monitoring was completed at forty sites across Eyre Peninsula by staff as part of the Biodiversity Monitoring Program in the last quarter. In this quarter data sheets have been finalised and any unknown plants were sent to the State Herbarium for identification.
- The Citizen Scientist network continue to undertake bird surveys and enter data into the EP Birds portal.

Local government engagement for this period

- Nothing to report.

Communications and community engagement for this period

- Staff have supported members of the Citizen Scientist network to undertake bird surveys etc. and enter data into the various portals (including the new Iconic bird sighting portal).

Upcoming priorities for the next period

- Staff will finalise the data collected at the Bushland Condition Monitoring ready for it to be entered into the state-wide database.
- Staff will continue to support the Citizen Scientist network and get the information they collect publically available on the Biological Database of SA.



Photo 18: Photo shows the positive change in condition between 2010 and 2020 as a result of the land manager excluding stock from this area near Elliston

Referrals (including stormwater management)

The Eyre Peninsula Landscape Board has formal referral responsibilities (such as commenting on development applications or stormwater management plans) and informal responsibilities (such as providing feedback on associated legislative changes, significant discussion papers or plans). These matters need to be responded to in a timely manner and often require the consolidation of feedback from across the organisation.

Program highlights this period

There were a total of eight referrals commented on in this period, which included:

- Two referrals from PIRSA around proposed changes to oyster leases;
- Draft Pastoral Lands Bill 2020;
- The Whyalla City Council Broadbent Terrace – Kirwan Street Drainage Study;
- The Australian Government's new Threatened Species Strategy;
- The draft list of recovery actions for the new Malleefowl Recovery Plan;
- The draft standard condition directed by prescribed bodies to apply to development approvals; and
- a development application relating to proposed tourist accommodation near Talia Caves.

Local government engagement for this period

- Board staff liaised with the Whyalla City Council with regard to a drainage study.

Communications and community engagement for this period

- Nothing to report.

Upcoming priorities for the next period

- Board staff will continue to provide feedback in a timely manner relating to the Board's formal and informal referral responsibilities.

Support to EP Landscape Board and committees, budget, annual report and Board minutes

Program highlights this period

- The inaugural Risk, Audit and Finance Committee meeting was held on 23 November 2020.
- Board meetings were held on 27 October 2020 in Streaky Bay and 16 December 2020 in Port Lincoln.
- The Internal Audit Control Plan was endorsed by the Risk, Audit and Finance Committee.
- The Policy and Procedure Schedule was reviewed.
- Corporate Services Review is underway, and transition of finance and business support staff anticipated in April, 2021.

- The Work Health and Safety Committee conducted two meetings (7 October and 9 December 2020) via MS Teams. The committee is progressing work on reviewing Plant Risk Assessments, Safe Operating Procedures and Work Health and Safety Policies.

Local government engagement for this period

- Nothing to report.

Communications and community engagement for this period

- Nothing to report.

Upcoming priorities for the next period

- The mid-year Budget Review 2020-21 will be undertaken.
- The preparation of the 2021-22 Annual Business Plan and Budget will commence.
- The Risk, Audit and Finance Committee meeting will be held on 15 February 2021.
- The Board meeting will be held on 23 February 2021 in Ceduna.

Published by the Eyre Peninsula Landscape Board.
08 February 2021

T: +61 (8) 8688 3111
F: +61 (8) 8688 3110
E: EPLBAdmin@sa.gov.au

Report prepared by:
Eyre Peninsula Landscape Board

www.landscape.sa.gov.au



With the exception of the Piping Shrike emblem, other material or devices protected by Aboriginal rights or a trademark, and subject to review by the Government of South Australia at all times, the content of this document is licensed under the Creative Commons Attribution 4.0 Licence. All other rights are reserved.