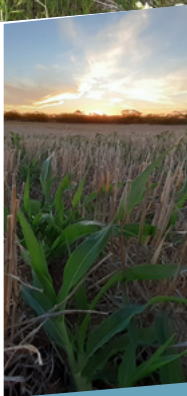


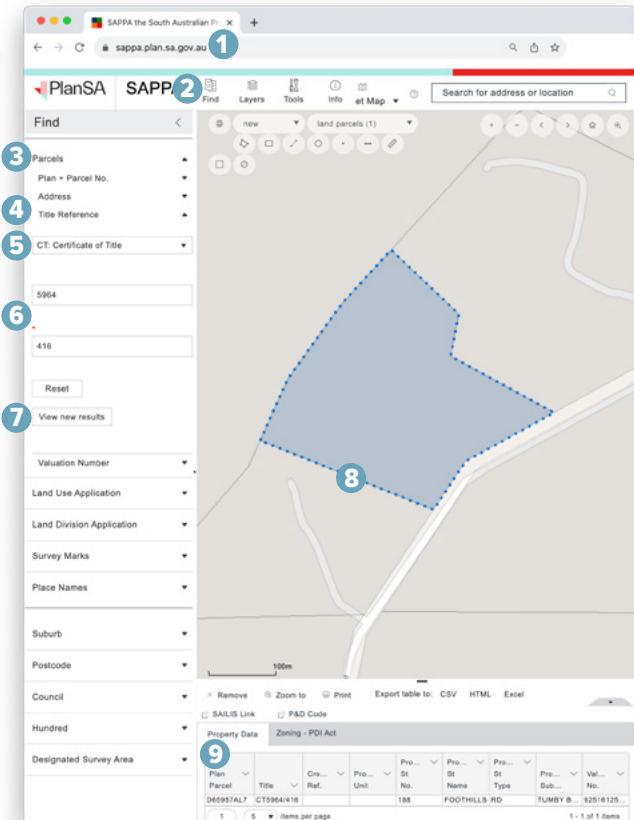
Eyre Peninsula Landscape Board

# Understanding the landscape levy



## Find your levy address

Follow these steps to search for your property



1 Go to the Planning SA website: [sappa.plan.sa.gov.au](https://sappa.plan.sa.gov.au)

2 Select 'Find'

3 Select 'Parcels'

4 Then select 'Title Reference'

5 Drop down the title prefix and select either CT, CL or CR as listed on your invoice

6 Type the title value and folio numbers – these are the numbers after your description e.g. CT: 5900/410 with the 4 digit number being the title value and the 3 digit number being the folio

7 Select 'View new results'

8 This will show the property location on a map, and:

9 The address details for the title reference

## Understanding your landscape levy

The landscape levy (previously known as the NRM levy), is paid by all ratepayers across South Australia – recognising that all landowners are responsible for sustaining and managing our state's landscapes for the benefit of the community.

## Why do we have a levy?

The levies are a primary source of funding for the management of the region's natural resources. Funds raised through the levies ensure that works are undertaken to achieve the region's vision of "Eyre Peninsula landscapes supporting biodiversity, community and business in a changing climate".

The levies also provide the Board with the ability to leverage additional government funds, which greatly increases the amount of work that can be accomplished in our region.

## What is the levy used for?

The levy is raised by regional landscape boards to fund programs that support the region, with an emphasis on water, sustainable agriculture, pest plants and animals, and biodiversity. The levies fund projects and programs to enable landholders, industry and the community to be directly responsible for sustainably managing the region's landscapes.



Watch our short video to see how we work on local priorities with the community.



Our landscape officers work with local groups who receive funding in our annual Grassroots Grants program such as Tumby Bay Area School. The school's grant has seen them work with local Landscape Officer on restoring populations of the threatened Whibley wattle which is endemic to the area.

## What landscape levies are there?

In Eyre Peninsula, there are two types of landscape levies – one for rateable properties within council areas, and a separate rate for properties that are outside of council areas.

The inside council area levy, collected by Councils on behalf of the Board, is a fixed charge that depends on the purpose for which the land is used. The categories for purpose of use are primary production, commercial, industrial, residential, vacant land and other. The Board has a base rate which is applied to residential properties, which is then multiplied by 1.5 for commercial and industrial properties and by 2 for primary producers.

For rateable properties outside of council areas – including some properties on the Far West Coast, as well as some offshore islands – the Board applies a base rate.

The Board reviews its business plan annually and decides on the quantum required for the next year, which to date has been kept to a Consumer Price Index increase only.

## How can I change my land use category?

Your land use category is assigned by the Office of the Valuer-General. Please contact your local council for help with applying to change the land use category assigned to your property.

## What is single farm enterprise?

If you're a primary producer with more than one rateable property within a council area, you can apply to that council to have your properties treated as a single farm enterprise. This means your enterprise will be charged the landscape land levy once annually.

If you own land in more than one council area, the land levy is payable in each council area.



## Your landscape region

The Eyre Peninsula landscape region takes in approximately 8 percent of South Australia, covering an area of 80,000 km<sup>2</sup>. It extends from Whyalla in the east, along the Gawler Ranges in the north, to the edge of the Nullarbor Plain in the west. The region includes more than 3,000 km of coastline spanning from the upper Spencer Gulf to the Great Australian Bight, including 182 offshore islands.

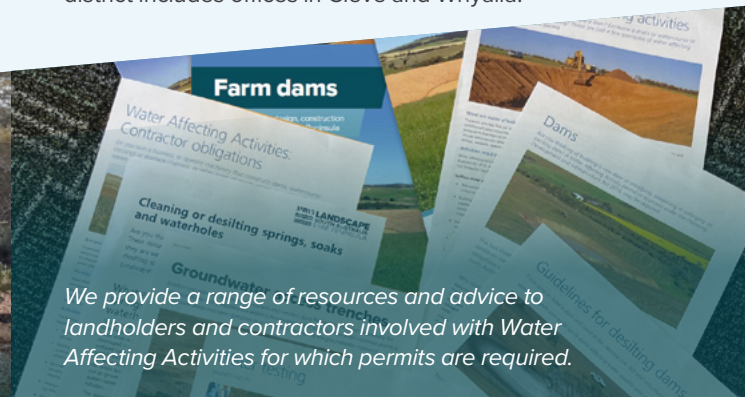
## Your landscape board

We have 8 offices spread across the region. The landscape levy supports landscape officers across the region to work directly with landowners to ensure our land is managed sustainably.

We operate with three district teams. Our western district includes our offices in Ceduna, Streaky Bay, Elliston and Wudinna; our southern district includes offices in Port Lincoln and Tumbly Bay; and our eastern district includes offices in Cleve and Whyalla.



*A landscape officer undertaking pest plant control.*



*We provide a range of resources and advice to landholders and contractors involved with Water Affecting Activities for which permits are required.*



## Still have questions?

See our landscape levy web page.



## Connect with us

 08 8688 3200

 EPLBAdmin@sa.gov.au

 [www.landscape.sa.gov.au/ep](http://www.landscape.sa.gov.au/ep)

## Main office

86 Tasman Tce  
Port Lincoln, SA 5606

## Eyre Peninsula Landscape Board

 [facebook.com/EPLandscapeSA](https://facebook.com/EPLandscapeSA)

 [youtube.com/@eplandscapeboard](https://youtube.com/@eplandscapeboard)

 [twitter.com/eplandscapeesa](https://twitter.com/eplandscapeesa)



*Photo: On Wedge Island, one of our Grassroots Grants has funded a restoration project that focused on managing weeds that are likely to impact the island's unique biodiversity as well as mapping the footprint of one of SA's largest colony of White-faced Storm Petrels.*