

Business Plan Achievement Report

1st Quarter 2021-2022

1 June to 30 September 2021

Southern District






About

The Eyre Peninsula Landscape Board's [Business Plan for 2021-22](#) sets out the programs, and component sub-programs or work activities for 2021-2022, which are funded and delivered by the Board to achieve the goals and vision of the [2021-2026 Eyre Peninsula Regional Landscape Plan](#).

This *Business Plan Achievement Report* provides an update on delivery of all our Board-funded programs in the Southern District during the last quarter. It includes reporting on the following for each sub-program:

- program highlights;
- local government engagement;
- communications and community engagement undertaken; and
- upcoming priorities for the next quarter.

Each sub-program is assigned a status, based on its current progress.

	On track to deliver key programs.		On track to deliver most programs. May be some delays.		Unlikely to deliver some program elements
---	-----------------------------------	---	--	---	---

For projects in the Port Lincoln City Council and District Councils of Tumby Bay and Lower Eyre Peninsula areas, further details of our work and programs can be found on the [Eyre Peninsula Landscape Board website](#) or by contacting **Ben Smith** (*Team Leader, Landscape Operations - Southern District*) on 08 8688 3243.

Note: For updates about delivery, in the Southern District, of Regional Projects such as the [Regenerative Agriculture Project \(RAP\)](#) and the [Saltmarsh Threat Abatement and Recovery \(STAR\) Project](#) refer to the *Business Plan Achievement Report: Whole of Region*.

Contents

Water	1
Managing Water Affecting Activities (WAA)	1
Sustainable agriculture	1
Delivering district level sustainable agriculture services.....	1
Pest plants and animals, and impact-causing native species	2
Biodiversity	6
Protecting and restoring coastal habitats	6
<i>Birdlife Australia's Federally-funded National Landcare Program (NLP) project Protect the Hooded Plover, on the southern Eyre Peninsula</i>	6
Maintain and enhance biodiversity in prioritised ecosystems.....	8
Community	10

Water

Focus areas and priority programs	Status
<i>Managing Water Affecting Activities (WAAs)</i>	
Managing Water Affecting Activities (WAAs) , including providing support for WAA enquiries, processing WAA permit applications and ensuring compliance with WAA policies and permits	

Managing Water Affecting Activities (WAA)

Water Affecting Activities (WAA) are activities and works that can impact on the health and condition of water resources, water dependent ecosystems and other water users. Under the Landscape South Australia Act 2019, an approved permit is required to undertake a Water Affecting Activity.

*Information for those planning to undertake a Water Affecting Activity is available in the factsheet [Permits - Water Affecting Activities](#). Our Water Resources Assessment Officer and other staff are always available to advise and help with WAA enquires. They also administer and process WAA permit applications and ensure compliance with WAA policies and permits. For updates on WAA related work across the region please refer to the **Business Plan Achievement Report: Whole of Region**.*

Program highlights this period

- Two ongoing WAA compliance issues were resolved through voluntary landholder compliance.

Local government engagement for this period

- Staff have been liaising with the District Council of Lower Eyre Peninsula (DCLEP) regarding ongoing water management issues along Richardson Road.

Sustainable agriculture

Focus areas and priority programs	Status
<i>Reducing the risk of land degradation to protect the region's valuable soils</i>	
Delivering district level sustainable agriculture services , including: Monitoring and managing land management compliance	
Providing support to build awareness of the importance of erosion protection and improvement of land management practices	

*For updates on our [Regenerative Agriculture Project \(RAP\)](#) and Regional Agriculture Landcare Facilitator (RALF) services, please refer to the **Business Plan Achievement Report: Whole of Region**. More information about our sustainable agriculture program, as well as useful information and resources for land managers can be found [here](#).*

Delivering district level sustainable agriculture services

Program highlights this period

- Monitoring of properties identified as having significant wind erosion issues has been ongoing.
- Significant July rainfall has resulted in good levels of cover on most impacted paddocks.



Photo 1: Ongoing monitoring of soil compliance issues across lower Eyre Peninsula

Pest plants and animals, and impact-causing native species

Focus areas and priority programs	Status
<i>Supporting landowners to control prioritised pest plants and animals</i>	
Implementing regional pest management plans for priority pest plants and animals	
Supporting landowners with their pest control responsibilities, including weed identification, best practice control advice and property planning assistance	
Delivering targeted pest animal baiting programs and weed control campaigns, monitoring, permitting and compliance works	
<i>Collaborating to reduce threats from impact-causing native species</i>	
Assisting landowners to connect with relevant authorities and providing information about impact-causing native species and control options	
Cataloguing current and emerging impact-causing native species, their impacts and extent	
Collaborating to reduce threats from impact-causing native species	

For updates about pest plant and animal, and impact-causing native species control activities implemented in the Southern District as part of the [Saltmarsh Threat Abatement and Recovery \(STAR\) Project](#) refer to the **Business Plan Achievement Report: Whole of Region**. Updates on development of our regional pest and impact-causing natives management plans can be found in the same report.

Program highlights this period

Pest plants

- **Gorse**

- A *Local Action Plan* for the management of Gorse in the Southern District has been developed.
- Following this plan, we have completed our annual Gorse management program. Fifteen compliance site visits were undertaken on private land at Green Patch, Whites Flat and Koppio. Four Action Orders were issued to landholders who had failed to control the weed on their property. This was the first time Action Orders have been issued in South Australia for the control of a pest plant species, and these achieved the desired result, with all landholders completing the required control.

- **Bridal Veil**

- Our annual Bridal Veil management program has commenced. Landholders with known infestations of Bridal Veil have been contacted and the presence of Bridal Veil on properties verified through site visits. It is the landholder's responsibility to control this declared species, and staff will be following up with site visits to confirm control has been undertaken.
- Roadside control of Bridal Veil has been completed at known sites near Whites Flat, Green Patch and Lake Hamilton.

- **Boneseed**

- Our annual Boneseed management program has commenced. Landholders with known infestations of Boneseed have been contacted and the presence of Boneseed on properties verified through site visits. It is the landholder's responsibility to control this declared species, and staff will be following up with site visits to confirm control has been undertaken.



Photo 2: Landholder spraying gorse at Green Patch



Photo 3: Sprayed and dead gorse on private property at Whites Flat

- **Olives**

- Olive orchard inspections commenced, with staff visiting registered Olive orchards to confirm that all Olives have been picked. This is critical, as Olives that are not picked have the potential to become a seed source for germination on surrounding properties.
- Compliance letters were sent to two landholders on Flinders Highway regarding large Olives growing through fence lines that are a large seed source for the area. Work has commenced on the control of these plants, with one landholder engaging a contractor to remove them.



Photo 4: Gorse sprayed on private property at Whites Flat (marker dye added to spray mix)



Photo 5: Aleppo Pines chopped down at a property along Lincoln Highway

- **Aleppo Pines**

- There has been follow-up on a long running compliance issue at an Aleppo Pine site on the Lincoln Highway where the landholder had not met their obligations to remove Pines. After again explaining their responsibilities under the Act, the desired the Pines were removed a few days later. The property has since sold.



Photo 6: EP landscape officers assisting with the Cape Tulip weed spraying blitz on Kangaroo Island

- **Assisting other regions**

- Two of our Port Lincoln-based Landscape Officers travelled over to Kangaroo Island recently to help with a spraying blitz of Cape Tulip weed. The weed has popped up in abundance since the 2019/20 bushfires and is a serious threat to the KI livestock industry as the weed is toxic to grazing animals.

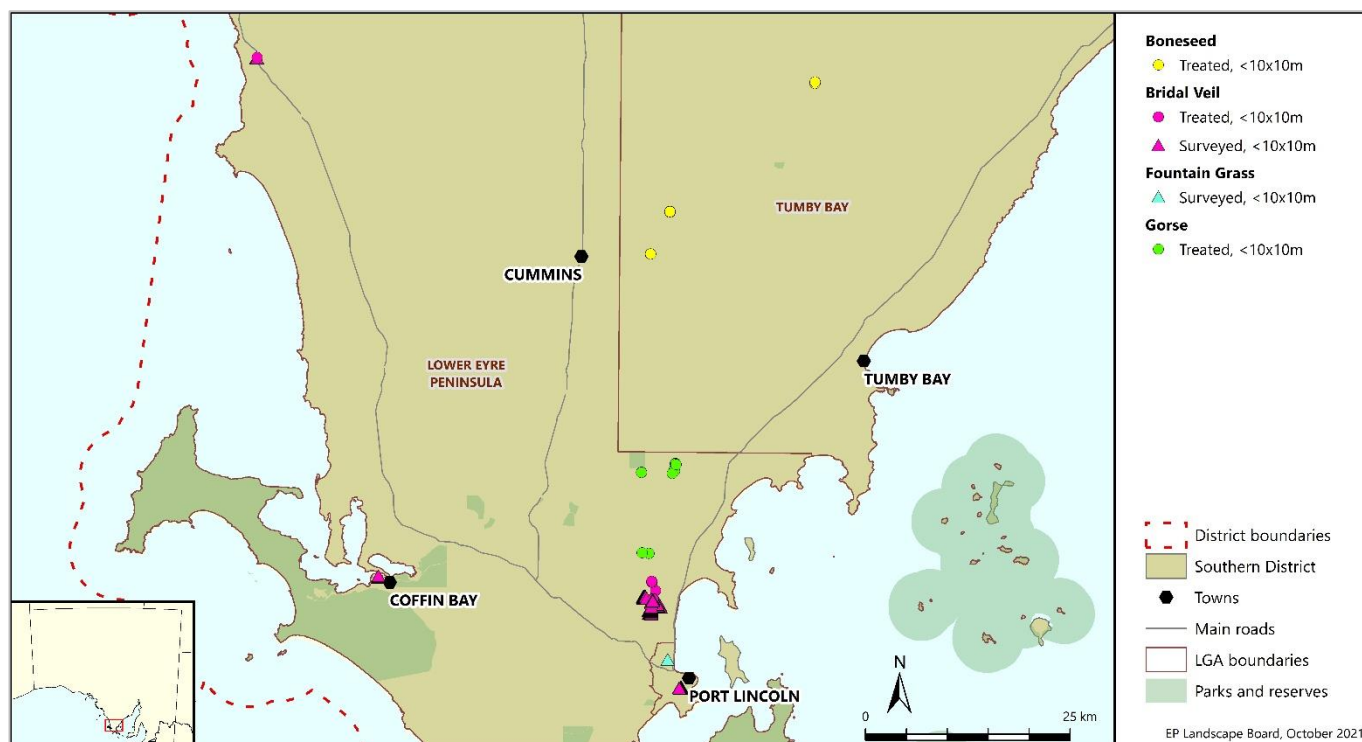


Figure 1: Priority pest plant control for the period 1 June to 30 September 2021

Pest animals

• Foxes

- Board staff held a 1080 meat bait manufacturing day, producing approximately 4,000 baits.
- We continue to supply 1080 meat baits and FOXOFF® baits to landholders across lower Eyre Peninsula.
- 1080 meat fox baits are available free of charge to Landholders at the Port Lincoln and Tumby Bay offices by appointment only. FOXOFF® is also available for purchase.
- As part of the Saltmarsh Threat Abatement and Recovery Project (see *Business Plan Achievement Report: Whole of Region*), and the Protect the Hooded Plover project (see [Biodiversity](#) section), a four-week fox baiting program was undertaken on private land adjoining the coast where a number of Hooded Plover nesting territories are located.

Local government engagement for this period

- Discussions have been held with Port Lincoln City Council around Bridal Veil control in the city's parks and reserves.

Communications and community engagement for this period

- Landholders have been sent initial contact letters reminding them of their obligations under the Act to control declared weeds, specifically Bridal Veil, Gorse and Boneseed, on their properties. Follow up phone calls and initial site visits have begun.

Upcoming priorities for the next period

- Continue discussions with landholders about Bridal Veil and Boneseed control.
- Continue distribution of 1080 meat and FOXOFF® baits to landholders.

- Commence the annual Fountain Grass management program.
- Provide support to landholders who are wanting to undertake rabbit control.

Biodiversity

Focus areas and priority programs	Status
Protecting and restoring prioritised coastal habitats	
Supporting community to undertake coastal management works in line with the Coastal Action Plan	
Birdlife Australia's Federally-funded National Landcare Program (NLP) project <i>Protect the Hooded Plover</i> , on the southern Eyre Peninsula	
Maintain and enhance biodiversity in prioritised ecosystems	
Supporting community and landholders to improve the health and condition of threatened ecological communities, native vegetation and threatened species	
Implementation of the biodiversity monitoring program	
Collaboration with partners to source funding for landscape-scale projects in priority ecosystems. Specific projects underway include:	
Enhancing Remnant Vegetation (ERV) Pilot	

For updates about delivery of our landscape-scale and region-wide biodiversity projects and programs, including activities in the Southern District, refer to the **Business Plan Achievement Report: Whole of Region**. This report includes information on:

- the [Saltmarsh Threat Abatement and Recovery \(STAR\) Project](#);
 - Blue Carbon
 - the Enhancing Remnant Vegetation (ERV) pilot;
 - Eyes on Eyre;
 - the Biodiversity Monitoring Program;
- and others.

Protecting and restoring coastal habitats

Birdlife Australia's Federally-funded National Landcare Program (NLP) project Protect the Hooded Plover, on the southern Eyre Peninsula

In addition to the Hooded Plover monitoring and conservation work we do under our STAR project, the Board is also contracted by BirdLife Australia to deliver Hooded Plover monitoring and conservation work under their federal-funded NLP [Protect the Hooded Plover](#) project. Under this project staff and volunteers monitor eight priority Hooded Plover nesting sites, plan and implement intervention actions at these sites when needed to protect nesting birds and chicks, and help coordinate and deliver the National Hooded Plover Biennial Count for southern Eyre Peninsula.

Program highlights this period

- Fortnightly monitoring at key Hooded Plover nesting sites has started with the commencement of the 2021-2022 nesting season.
- A high presence of fox prints has been found on nesting beaches. We have therefore undertaken early intervention works across several nesting territories to help reduce the threat foxes pose to nesting Hooded Plovers, and hence hopefully improve nesting success. The intervention works



Photo 7: A fox bait station set up as part of the four-week fox baiting program. The small hole shows where a fox bait has been taken



Photo 8: Hooded Plover Nest during egg laying stage, Cape Hardy. Photo taken by **trained** Landscape Officer

comprised a four-week fox baiting program on private land adjoining the coast where the nesting territories are located.

- At a nesting territory near Port Neill, a BirdLife Australia volunteer recorded the first two hatchlings for the Eyre Peninsula for this breeding season.

Communications and community engagement for this period

- The Southern Eyre District has many Hooded Plover nesting territories that are monitored by BirdLife Australia volunteers. We continue to provide support, advice and visits to give these volunteers the confidence and support they need to undertake this important work. Providing this support for volunteers has been agreed as a focus area for this project with BirdLife Australia, as this will help develop local skills to provide ongoing monitoring and conservation of this endangered species.

Upcoming priorities for the next period

- We use camera traps (approved by BirdLife Australia) to monitor a number of our nesting territories. We are commencing a program for volunteers to assist with processing the large amount of imagery generated by this monitoring. A training workshop on how to review and document remote camera footage from Hooded Plover nesting sites will therefore be held for volunteers.
- A draft *Hooded Plover Response Plan* will be prepared for the District Council of Tumby Bay area in consultation with Council and volunteers.



Photo 9:
A Hooded Plover nest on
the upper beach, near
Tumby Bay, narrowly
missed by high tides, dogs
and people who walk along
the beach.
Photo taken by **trained**
Landscape Office

Maintain and enhance biodiversity in prioritised ecosystems

Program highlights this period

- ***Acacia whibleyana***

Monthly monitoring of the *Acacia whibleyana* soil disturbance project site recorded a massive 251 live seedlings in September. With a drier spring approaching, the outlook for survival of these may, however, not be good. The soil disturbance project, being implemented by University of Adelaide, aims at determining the impact of soil disturbance on Whibley Wattle seedling germination and recruitment.



Photo 10:
Good germination of
Whibley Wattle seedlings
this winter

Implementation of the Biodiversity Monitoring Program - Bushland Condition Monitoring (BCM)

- As part of our long term [Biodiversity Monitoring Program](#), vegetation surveys were completed at five Bushland Condition Monitoring (BCM) sites in the Southern District, with sites located in the Eyre Hills between Cummins and Lipson, near Wanilla, and on the coast near Moonlight Bay, .
- Each site is monitored once every 10 years using health indicators like species diversity, weed abundance, grazing pressure and regeneration, to provide a snapshot of the overall health of the vegetation community at the site, as well as identify distinct changes and impacts of activities such as herbivore grazing.
- Sites have either been selected to provide data from all representative Eyre Peninsula vegetation communities or are “performance” sites, which are located in areas where on-ground works (e.g. exclusion fencing, pest plant control) have previously been undertaken to improve bushland condition. These “performance” sites are surveyed so that the positive impact of the on-ground works can be tracked.
- Great diversity was found at two of the five Southern District BCM sites, where over 65 plant species were recorded in the 30 m x 30 m survey quadrats.



Photo 11: Annual vegetation survey being undertaken at a “performance” Bushland Condition Monitoring site on southern EP

Enhancing Remnant Vegetation (ERV) Pilot

- Applications were open from late September until 27th October for landholders who wanted to apply to be part of the [Australian Government's Enhancing Remnant Vegetation Pilot](#). Under the pilot, farmers can receive payments to manage and enhance remnant native vegetation on-farm, through activities such as installing fencing to exclude grazing, carrying out weeding, pest control and replanting. With the Eyre Peninsula being one of six trial regions from across Australia for this project, our landscape officers have helped to [spread awareness](#) about the pilot and have supported landholders with applications.

Communications and community engagement for this period

- There have been a number of social media posts putting a spotlight on our threatened Whibley Wattle, *Acacia whibleyana*:
 - 19th August, science spotlight about the Whibley Wattle seedling trial for #scienceweek themed posts on [Facebook](#) and [Twitter](#).
 - 1st September, National Wattle Day promotion of Whibley Wattle on [Twitter](#) and [Facebook](#).

Upcoming priorities for the next period

- Bushland Condition Monitoring data will be compiled and reports for landholders developed.
- Landholders will be provided with support to lodge ERV pilot applications.
- Site visits and verifications will be conducted for potential ERV project sites.
- The annual survey of the Malleefowl grid will be undertaken at Hincks Conservation Park for the National Malleefowl Recovery Team.

Community

Focus areas and priority programs	Status
<i>Community at the centre and actively engaged in landscape management</i>	
Supporting Aboriginal and community groups, Local Government, farming groups and schools to progress natural resource activities through the provision of the Grassroots Grants program	

*This section provides information about the delivery and acquittal of Grassroots Grants in the Southern District, and support provided by Board staff to grant applicants. For updates about the [Grassroots Grants](#) application process, successful applicants the award of Grants, and overall management of the Grassroots Grants program, refer to the **Grassroots Grants program** section in the **Business Plan Achievement Report: Whole of Region**.*

Program highlights this period

'From Little Things, Big Things Grow' – St Joseph's School, Port Lincoln

- The St Joseph's School 'From Little Things, Big Things Grow' initiative which was launched in November 2020 and was supported by one of our Grassroots Grants wrapped up. Under this project St Joseph's students have been helping revegetate a North Shields property that was severely burnt during the 2005 bushfires. The students have been responsible for all parts of the tree growing process. They collected seeds on the property in November, dried them out, propagated them at the school and planted the seedlings near the creek bed. Through this they have learnt valuable skills and

gained a respect and understanding about native vegetation. The project was celebrated through an [online ABC article](#) and short video.

2021-2022 Grassroots Grants

- Six projects in the Southern District have been awarded funding through the Board's 2021-2022 Grassroots Grants program. These include:
 - upgrade to nursery irrigation systems at Lake Wangary Primary School;
 - marine microplastic monitoring training;
 - women in agriculture field trips;
 - pest plant control in Coffin Bay;
 - water quality monitoring and pest plant control in Big Swamp; and
 - pest plant control and revegetation activities at the Port Lincoln Riding for the Disabled Centre.

Local government engagement for this period

Project name

- The '[Iconic Species of Lipson Cove](#)' sign created by student Keira Berryman, was erected. This was funded through our 2020-2021 Grassroots Grants program, and was supported by the District Council of Tumby Bay.

Upcoming priorities for the next period

- Board staff will continue to work with the 2021-2022 grant recipients on the delivery of their projects.



Photo 12: Berryman family with newly erected sign highlighting iconic species of Lipson Cove

Published by the Eyre Peninsula Landscape Board.
12 November 2021

T: Port Lincoln 08 8688 3200
T: Tumby Bay 08 8688 2610

E: EPLBAdmin@sa.gov.au

Report prepared by:
Eyre Peninsula Landscape Board

www.landscape.sa.gov.au/ep/home



With the exception of the Piping Shrike emblem, other material or devices protected by Aboriginal rights or a trademark, and subject to review by the Government of South Australia at all times, the content of this document is licensed under the Creative Commons Attribution 4.0 Licence. All other rights are reserved.