

# Business Plan Achievement Report

1<sup>st</sup> Quarter 2022-2023

1 July to 30 September 2022

## Whole of Region





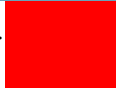
## About

The Eyre Peninsula Landscape Board's [Business Plan for 2022-23](#) sets out the focus areas and priority programs for 2021-2022, which are funded and delivered by the Board to achieve the goals and vision of the [2021-2026 Eyre Peninsula Regional Landscape Plan](#).

This *Business Plan Achievement Report* gives an update on broader program management and planning across the Eyre Peninsula region in regards to our core programs; as well as providing information about implementing the Water Allocation Plan, managing Water Affecting Activities and the delivery of our regional Federally-funded projects. It also includes updates on our planning processes and general business support functions. For each sub-program the report covers:

- Program highlights;
- Local government engagement;
- Communications and community engagement undertaken; and
- Upcoming priorities for the next quarter.

Each sub-program is assigned a status, based on its current progress.

	On track to deliver key programs.		On track to deliver most programs. May be some delays.		Unlikely to some program elements.
---	-----------------------------------	---	--	---	------------------------------------

Further details of each of these programs can be found on the [Eyre Peninsula Landscape Board website](#) or by contacting **Susan Stovell** (*Manager, Planning and Business Support*) on 08 8688 3201.

# Contents

<b>Water</b> .....	<b>1</b>
Implementation of the Water Allocation Plan (WAP).....	1
Groundwater Dependent Ecosystem (GDE) monitoring.....	2
Managing Water Affecting Activities (WAA).....	2
<b>Sustainable agriculture</b> .....	<b>4</b>
Regional Agriculture Landcare Facilitator services .....	4
Regenerative Agriculture Program .....	6
<b>Pest plants and animals, and impact-causing native species</b> .....	<b>9</b>
Pest plants and animals.....	9
<b>Biodiversity</b> .....	<b>11</b>
Saltmarsh Threat Abatement and Recovery (STAR) Project.....	11
Eyes on Eye.....	18
Blue Carbon.....	20
Cummins Wanilla Streamcare Group infrastructure upgrade project.....	21
Biodiversity Monitoring Program .....	21
Collaboration on landscape-scale projects.....	22
<i>Carbon + Biodiversity Pilot</i> .....	22
<i>Enhancing Remnant Vegetation (ERV) Pilot</i> .....	23
<i>Biodiversity Credit Exchange (BCE) Program</i> .....	24
<b>Community</b> .....	<b>25</b>
Citizen Science Program.....	25
Grassroots Grants Program .....	26
<i>2021-2022 Grassroots Grants – Regional Projects</i> .....	27
Leadership and governance .....	28
<i>Board meeting highlights</i> .....	28
<i>Referrals (including stormwater management)</i> .....	29

# Water

Focus areas and priority programs	Status
<i>Effective water allocation planning in prescribed water areas</i>	
<b>Implementation of the Water Allocation Plan (WAP)</b> , including mid-term (5 year) review	
<b>Groundwater Dependent Ecosystem (GDE) monitoring</b>	
<i>Managing Water Affecting Activities (WAAs)</i>	
<b>Managing Water Affecting Activities (WAAs)</b> , including providing support for WAA enquiries, processing WAA permit applications and ensuring compliance with WAA policies and permits	

## Implementation of the Water Allocation Plan (WAP)

The Water Allocation Plan (WAP) for the Southern Basins and the Musgrave Prescribed Wells Areas, Eyre Peninsula, was endorsed by the State Government on 28 June 2016. The WAP guides the management the extraction of groundwater from wells within two Prescribed Wells Areas (PWAs). The Southern Basins PWA is located between Coffin Bay and Port Lincoln on southern Eyre Peninsula, and the Musgrave PWA is located between Lock and Elliston on western Eyre Peninsula.

If you would like more information on the WAP, you can download a copy of the Water Allocation Plan for the Southern Basins and the Musgrave Prescribed Wells Areas by clicking [here](#).

## Program highlights this period

- A new WAP Implementation Officer has been appointed. This role has been filled by Dave Cunningham (Senior Water Resources Officer), who will be responsible for managing the delivery of the WAP Implementation Project. Seb Drewer (Manager Landscape Operations) has been assigned the role of WAP Implementation Manager.
- Planning has been completed for the next 'EP Landscape Board WAP Implementation Team' meeting. These meetings will be pivotal to providing guidance for the delivery of the new WAP Implementation Project, which has been put in place to ensure delivery of the WAP, as well as implementation of the recommendations of the *WAP Mid-Term Evaluation Report*.

## Upcoming priorities for the next period

- We will continue progress towards the delivery of the WAP Implementation Project and implementation of the recommendations of the *WAP Mid-Term Evaluation Report*.
- The Department for Environment and Water's *2020-21 Water Resources Assessment Reports* and *Groundwater Status Overview* factsheets for the Musgrave and Southern basins Prescribed Wells Areas will be made available on the [WaterConnect website](#).
- The annual water allocations will be announced by the Department for Environment and Water (DEW).
- The *Summary WAP Mid-Term Evaluation Report* will be made available on the Board's website.

## Groundwater Dependent Ecosystem (GDE) monitoring

*One of the objectives of the Water Allocation Plan (WAP) for the Southern Basins and Musgrave Prescribed Wells Areas (2016) is to minimise the impact of licenced taking of groundwater on ecosystems that depend on the prescribed groundwater resources. The WAP aims to maintain these ecosystems, collectively known as Groundwater Dependent Ecosystems (GDEs), at a low level of risk, and in the condition, and at the locations and extents they occurred at in 2016. Eyre Peninsula Landscape Board has therefore developed a program to establish a baseline and monitor changes in flora condition, groundwater level and salinity, at a group of GDEs (Red Gums and wetlands) within the Southern Basins and Musgrave Prescribed Wells Areas. More information about GDE monitoring, including report cards can be obtained [here](#).*

### Program highlights this period

- We continue to work with Flinders University to confirm definitively whether the Red Gums are using local groundwater. This will be done by looking at stable chemical isotopes that occur in the local groundwater, and which are a "signature" for a groundwater source, and comparing these to the isotopes occurring in tree sap. The main field monitoring will occur in early 2023, and planning for this work is underway.

### Upcoming priorities for the next period

- We will continue to work with Flinders University to plan the field work for the isotope testing to determine the sources of water used by Red Gums at selected Red Gum monitoring sites.
- Planning for the annual spring monitoring of Red Gum and wetland GDE sites is underway. This monitoring will be undertaken in October and November.
- We are still developing the 2021 report cards for the wetland GDE sites, and will combine these with the 2022 reporting.

## Managing Water Affecting Activities (WAA)

*Water Affecting Activities (WAA) are activities and works that can impact on the health and condition of water resources, water dependent ecosystems and other water users. Under the Landscape South Australia Act 2019, an approved permit is required to undertake a Water Affecting Activity.*

*Information for those planning to undertake a Water Affecting Activity is available in the factsheet [Permits - Water Affecting Activities](#). Our Water Resources Assessment Officer and other staff are always available to advise and help with WAA enquires. They also administer and process WAA permit applications and ensure compliance with WAA policies and permits.*

### Program highlights this period

- Across the region the following work related to Water Affecting Activities (WAA) has been undertaken by Board staff:
  - Three new WAA permit applications were received. The permit applications included those for drainage to help manage waterlogging and salinity issues and a watercourse vehicle crossing construction.
  - Assessment of one application was completed and approval was given to construct a water crossing in a watercourse.
  - A site visits was also undertaken with a landholder to assist him with a proposed WAA application.

- Two active compliance issues are being addressed. Both of these involve the dumping/placement of listed waste materials into a watercourse. One is located within the Kellidie Bay Catchment and one within the Boston Bay Catchment.
  - Fifteen water salinity/pH tests were completed for landholders.
  - Forty WAA enquiries were received and addressed.
- **Eyre Peninsula ElectraNet Power Transmission Line Project**
    - A meeting was held with the ElectraNet environmental officer to discuss plans to review works completed under several WAA Permits. This project is to be completed in January 2023 and a plan has been established to ensure that all WAA related works and requirements have been adequately completed. The WAA related works, which are mainly for access tracks used in the construction of the transmission line, will be reviewed as they are completed and handed over to ElectraNet by sub-contractors.
    - Following the completion of the project and commissioning of the new transmission line, the old existing transmission line and infrastructure will be decommissioned and removed. Meetings will be held with ElectraNet to discuss this demolition project and any impacts to watercourses and WAA permit requirements.

### Local government engagement for this period

- **District Council of Lower Eyre Peninsula (DCLEP)**

We have been engaging with the DCLEP about works that are going to occur to clean out sediment from the Peelina Creek at and adjacent to the Bratten Way crossing.

### Communications and community engagement for this period

- We have engaged with EP Vegetation Control, a new contracting business operating in the area of clearing vegetation. A meeting was held with them to discuss WAA requirements and clearing vegetation in watercourses.
- Our water testing service which is available to landholders to check salinity and pH of their water sources was promoted on [Facebook](#) and [Twitter](#).

### Upcoming priorities for the next period

- Plans are underway for the statewide *mywater* system to go live. Once the system is available, all WAA permit applications will have to be submitted online through *mywater*. We will then promote the use of the system, focusing on how the changes will impact landholders applying for WAA permits. Information about the system will be added to our website and communicated on social media.
- We will continue to provide all services related to managing WAAs, including
  - assisting with WAA enquiries, undertaking site visits where required and providing responses,
  - processing WAA permit applications,
  - investigating and addressing WAA compliance cases,
  - inspecting WAA works,
  - providing water testing (pH and salinity) at our regional offices for landholders, and
  - working with local government and other organisations on any WAA / field based water resource issues.

# Sustainable agriculture

Focus areas and priority programs	Status
<i>Facilitating regenerative land management to improve soil health and vitality</i>	
<b>Regional Agriculture Landcare Facilitator (RALF) services</b>	
<b>Regenerative Agriculture Program (RAP)</b>	
<b>Severe weather response – Significant rain events January 2022</b>	

## Regional Agriculture Landcare Facilitator services

The Australian Government, through the National Landcare Program (NLP), have funded the [Regional Agriculture Landcare Facilitator \(RALF\)](#) with core funding for five years to June 2023. The delivery of the RALF services is contracted to Agricultural Innovation and Research Eyre Peninsula (AIR EP).

### Program highlights this period

- Representatives from the Department of Agriculture, Fisheries and Forestry (previously the Department of Agriculture, Water and the Environment) came to the Eyre Peninsula to visit our agricultural program. This visit gave the EP Landscape Board and AIR EP the opportunity to showcase the Sustainable Agriculture Program, and visit the landowners who are being assisted by the program with trialling different practices in their farming systems. We also had the opportunity to discuss the emerging issues in agriculture on the Eyre Peninsula. We visited a number of farmers from lower EP right through to Kimba and Cowell, and were able to showcase our work around Mallee seeps, mixed cover cropping and the practices farmers are undertaking to improve their soil health.
- The RALF has been providing ongoing support for the NLP2 funded [Resilient EP](#) project, and assisted with delivery of an [innovation tour](#) of the Eyre Peninsula. The four-day tour of the region brought a small group of expert researchers from outside of the Eyre Peninsula together with local farmers. Visiting the focus sites of the Resilient EP project, the experts could see first-hand the challenges and opportunities across the region, discuss with the landowners the issues they are facing and help forge a path forward.
- The RALF also supported the delivery of two Grains Research and Development (GRDC) Sandy Soils Masterclasses at Murlong and Buckleboo on the 30<sup>th</sup> and 31<sup>st</sup> of August respectively. The events were very well received. They brought together a number of sandy soils trials and projects that have been implemented on the Eyre Peninsula over the last five years. It gave the researchers the opportunity to connect and speak with farmers around the practices they are already undertaking in the soil amelioration space.



**Photo 1:** Marg Evans speaking to growers about the [South Australian Grain Industry Trust \(SAGIT\)](#) crown rot trial at the Franklin Harbour Ag Bureau Sticky Beak day on 25 August.



**Photo 2:**

*Far West farmers hearing from Stuart Sheriff (Tregrove Consulting) and Seth Cooper about growing canola at Nundroo*

- An important part of the RALF's work is to assist the Eyre Peninsula Agricultural Bureau and farmer groups with coordinating their annual sticky beak days and crop walks. This year the RALF provided support for and attended ten days, connecting with over 500 farmers. These sticky beak days are a crucial part of extension on the Eyre Peninsula as it gives farmers the opportunity to see trials that might be happening in their area and connect with the researchers in an informal environment.
- The RALF also provided support to AIR EP for the annual Lower EP Crop walk. With 50 farmers in attendance, a range of topics were covered during the day, including canola profitability, disease management in wet seasons, pulse varieties and management, and pastures.
- The RALF has also continued to work on AIR EP's [Foundation for Rural and Regional Renewal](#) (FRRR) funded "[Young Farmer Network Mapping Project](#)". This project has given the RALF the opportunity to work with a range of young farmers from across the Eyre Peninsula, identifying how they access industry information, and how they would like to access the information. A series of workshops led to the concept of a podcast where young farmers are given the opportunity interview an experienced farmer or industry person, giving the ability to transfer information between generations.

### Upcoming priorities for the next period

During the next quarter the RALF will be focussing on:

- recording activities from the busy 2022 spring extension season and also preparing for the busy autumn extension season in 2023;
- promotion of the [EP Ag Chats](#) podcast series during harvest; and
- assisting with organisation of a summer crop webinar for the Sustainable Agriculture project.



## Regenerative Agriculture Program

The [Regenerative Agriculture Program \(RAP\)](#) on Eyre Peninsula, funded through the Australian Government's National Landcare Program, is a five-year (2018-2023) program that is now in its fourth year of delivery. The project aims to increase awareness, knowledge and the adoption of land management practices to restore soil pH levels, increase soil organic carbon levels and reduce the risk of nutrient loss from wind and water erosion by increasing soil cover. Through engaging farming systems groups and individual farmers to develop paddock based demonstration sites, it supports them to implement best practice management and practice change; and showcase the results to the broader farming community. There are currently eighteen demonstration sites established across the Eyre Peninsula.

Mallee seeps are an increasing issue in eastern Eyre Peninsula. This project also aims to increase the understanding of the extent and impact of these seeps in the environment. Farmers and farming communities are supported through web-based mapping programs, forums, workshops and one-on-one support.

Project delivery is contracted to Agricultural Innovation and Research Eyre Peninsula (AIR EP), Rural Solutions SA, and other service providers as required.

### Program highlights this period

- As discussed in the previous section, the EP Landscape Board and AIR EP hosted representatives from the Department of Agriculture, Fisheries and Forestry (DAFF previously the Department of Agriculture, Water and the Environment) on a tour of EP Regenerative Agriculture Program project sites in late July. This is the department that funds the core projects in the Sustainable Agriculture program across Eyre Peninsula.

During the visit the two DAFF representatives were briefed about some of the characteristics of both the agriculture and natural capital of the region, how it is administered, and some of the successes of the Regenerative Agriculture Program. They were also taken on a short tour of some of southern and eastern EP, visiting farmers and crops, and seeing different land issues like recent flooding damage, and developing Mallee seeps. They also looked at multi-species crops, and the effects of ripping and organic amendment additions. They commented they were very impressed with the bit of the region they saw.

- Monitoring reports were received from five grant recipients (four multi-species crop grants and one soil carbon grant) who have newly established demonstration sites. All sites have been successfully established and baseline monitoring has been completed at the sites.

### Mixed species crops and pastures for soil management program

- One multi-species summer planting grant was allocated this quarter. This grant is for a site located in the Eastern Cleve Hills. The aim of this demonstration site is to trial the use of multi-species planting for management of a Mallee seep.
- There are four remaining grants of up to \$6,000 for spring-summer plant species establishment. For more information about these grant opportunities refer to the [Soil cover demonstration grants](#) section on our website [here](#). There is lots of interest in these small grants, and we are starting to receive expressions of interest and applications for them.

### Soil carbon demonstration sites

- Trials are still underway at 13 soil carbon demonstration sites. Monitoring at the sites is ongoing and reporting will be completed as the trials are completed.



**Photo 3:**  
 Brian Hughes, SARDI,  
 presenting at the Salinity  
 Mitigation workshop at  
 Ungarra on  
 21 September 2022

### **Mallee seeps project and general soil salinity management**

- A Salinity Mitigation workshop was held on 21 September at Ungarra. Eleven growers attended the workshop, which had presentations by Brett Masters and Brian Hughes (South Australian Research and Development Institute –SARDI), and Chris McDonough (Insight Extension for Agriculture).

The workshop was held in response to landholders' requests for additional workshops on this subject, and also as a response to more enquiries for one-on-one visits to provide advice on salinity issues. While there was lots of experience with salinity in the region about 30 years ago, the current generation of farmers have not had much first-hand experience in working with salinity, rising groundwater, and waterlogging. This, combined with an above average rainfall season, has been driving enquiries.

We therefore tried to address landholder concerns around salinity with the workshop. We covered sources and effects of salt in cropping soils and landscapes, and presented examples of Mallee seeps and how the management of these can inform other salinity management. There were also discussions about waterlogging and the effectiveness of drainage.

Providing support, education and extension around soil salinity is an area where there is scope for more work, and this should be considered when planning future projects or programmes of work.

### **Restoring soil pH project**

- We have been continuing discussions and preparation with different presenters about material that might be appropriate for the planned EP Acidity Forum in the first quarter of 2023. Although we are still in the planning stage for the forum, the intent is to reconnect with landholders who attended earlier forums, and present results from the project in the broader context of soil pH management. We are also aiming to bring together researchers in the field to present on their current work, and discuss the next challenges with soil acidity.
- There were spontaneous discussions with farmers at the Roberts-Verran Sticky Beak Day about the observed emerging impact of soil acidity in the Wharminda area. This demonstrates the continuing emergence of newer areas of concern regarding soil acidity.

## Communications and community engagement for this period

### Case studies

- An important part of the RAP is sharing the learnings from demonstration sites and other program activities with the broader community. We do this through the write up, and publication on [our website](#), of case studies. Two new case studies were published this quarter, and were promoted on social media. These were:
  - a [case study](#) showcasing the use of multi-species pastures on a farm in the Tumby Bay hills, which yielded high value grazing on what would otherwise be marginal farming land because of its sloping rocky character ([Twitter](#) and [Facebook](#)); and
  - a [case study](#) about the success treatment of sub-surface acidity on a lower Eyre Peninsula farmer through the use of a combination of liming and tillage ([Twitter](#) and [Facebook](#)).
- An interview was also conducted for a new case study, which presents the results of a demonstration site where deep ripping and multi-species pasture is being used in combination. The case study will be written up and published on our website [here](#), sharing the learnings from the demonstration site with the broader community.

### Other communications and community engagement

- The Salinity Mitigation workshop was promoted on social media [Twitter](#) and [Facebook](#) and in [AIREP's](#) weekly newsletter.
- The [Farmers Connect EP, edition 17](#) was published and distributed in August 2022. We included articles on the sandy soils master classes (see previous RALF section for more information about these), salinity, regional conditions, and continued to promote the multi-species cover crop grants that are available.
- Naomi Scholz, AIR EP RAP Project Manager, and Josh Telfer, AIR EP Sustainable Agriculture Officer, attended the Soil CRC Conference in Adelaide on 23<sup>rd</sup> to 25<sup>th</sup> August. They gave a short presentation about the region, and it gave them the opportunity to connect, hear and share with other farming system groups and other farming organisations and researchers who work on similar cover and sustainable agriculture issues from across Australia.

### Upcoming priorities for the next period

- We will continue to promote and allocate the remaining multi-species grants.
- A webinar on planting summer species will be developed, looking at how farmers can take advantage of high soil water levels in the region.
- The case study on the use of deep-ripping with multi-species pasture will be completed, and we will begin developing more case studies, possibly including some about Mallee seep management, for publication.
- A statewide (Landscape SA) media story about regenerative agriculture is planned for release in November with examples from the EP about our mixed species grants.

# Pest plants and animals, and impact-causing native species

Focus areas and priority programs	Status
<i>Supporting landowners to control prioritised <b>pest plants and animals</b></i>	
Development and review of regional pest management plans for priority pest plants and animals	On Track
Delivering high-level, regional and state-wide pest management activities and programs	On Track
<i>Collaborating to reduce threats from <b>impact-causing native species</b></i>	
Cataloguing current and emerging impact-causing native species, their impacts and extent in the region	On Track
Collaborating with other regions and agencies to develop policy frameworks, strategies or programs, with the aim of reducing threats from impact-causing native species	On Track

## Pest plants and animals

The Eyre Peninsula Landscape Board works closely with land managers to find ways of reducing the number of pests, help restore native biodiversity and reduce losses in the agricultural industry. As part of the pest management program, the Board has developed twenty-one pest management plans for the management of priority pest plants and animals across the region. Here we report on region-wide and high level activities contributing to the achievement of the objectives of the pest management plans including, but not limited to:

- Higher level progress towards pest management plan implementation and review.
- Delivery of regional and state-wide control programs.
- New incursions or potential threats to the region at a high level.
- New trials or research, and information from external organisations such as PIRSA.
- Attendance at state-wide pest animal and plant network meetings, as well as South Australian Wild Dog Advisory Group (SAWDAG) meetings.

Implementation of actions identified in the current twenty one pest management plans is ongoing. Please refer to the **Pest plants and animals sections, and impact-causing natives** in the three **district Business Plan Achievement Reports** for key progress, operational activities and achievements in each district. More information about pest plants and animals on the Eyre Peninsula, and links to the EP landscape board pest management plans can be found [here](#).

## Program highlights this period

- For the management of priority pest plants, District Action Plans are developed annually to guide the delivery of works that will support achieving the aims of our Regional Pest Plant Management Plans (available [here](#) on our website). Staff undertook the “evaluation of success” for some of the 2021 District Annual Action Plans for pest and weed management. This has helped staff define what was done well and what needs improvement. In general the Action Plans have been successfully delivered, with lessons learnt with regard to inspecting for voluntary compliance of landholders to manage pest plants on their properties.
- In conjunction with conducting these evaluations, we are also working to establish ways to better evaluate the impact of our work. We are currently in the process of adopting a new set of tools (app based) to improve our capture of data related to pest plant management, including survey effort or extent, pest plant presence / absence, and treatment works.
- Some Landscape Board staff attended the 22<sup>nd</sup> Australasian Weeds Conference. This conference is an important forum for weed managers to get together and learn about the latest in weed trends, threats, and scientific and technological advances.

## Communications and community engagement for this period

### SA Kangaroo Partnership Program – Grants program

- The [South Australian Kangaroo Partnership Project](#), run by the SA Arid Lands (SAAL) Landscape Board, and funded through [SA Landscape Priorities Fund](#), is a multi region, multi partner project being run over two years that is aimed at addressing the significant threat posed by over-abundant kangaroos to the condition and resilience of rangelands ecosystems and the enterprises they support. The project brings together key stakeholders to explore and trial shared solutions to the problem of over-abundant kangaroos, and EP Landscape is one of the partners in the project.

During Augusts and early September the project's \$90,000 grants program was open for applications. Grants of up to \$15,000 per project, were available for projects relating, but not limited to, trials and demonstrations, research and development, education and awareness raising, and innovative ideas associated with improving outcomes in kangaroo management. These grants were also available to applicants from the Eyre Peninsula, and were promoted on social media ([Facebook](#), and [Twitter](#)) and through a [media release](#).

### Upcoming priorities for the next period

- We will continue to progress writing annual action plans tailored for each district and evaluating success of additional 2021 annual action plans. Plans for these priority species; Wild Dogs, Buffel Grass, Feral Deer and Feral Goats will be reviewed and updated.
- We will be evaluating the efficacy of the new data collection tools, and using the additional data collected to start developing report cards on the delivery of our pest plant management plans.
- Buffel grass surveillance will commence in the next period. Buffel grass distribution has been expanding widely in other parts of the state following favourable growing conditions. Landscape staff will be expanding search efforts to detect any new incursions.

# Biodiversity

Focus areas and priority programs	Status
<i>Protecting and restoring prioritised coastal habitats</i>	
Delivering the National Landcare Program's <b>Saltmarsh Threat Abatement and Recovery (STAR) Project</b>	On Track
Supporting partners to progress <b>Eyes on Eyre</b> activities, protecting priority coastal habitats and encouraging sustainable use	On Track
Partnering with other agencies to advance <b>blue carbon</b> initiatives particularly focused on temperate saltmarsh restoration	On Track
<i>Maintain and enhance biodiversity in prioritised ecosystems</i>	
Support the implementation of the <b>Cummins Vanilla Streamcare Group Drainage Management Plan and associated PIRSA Regional Growth Fund infrastructure upgrade project</b>	On Track
Continued implementation, review and improvement of the <b>biodiversity monitoring program</b>	On Track
<b>Collaboration</b> with partners to source funding for <b>landscape-scale projects</b> in priority ecosystems. Specific projects underway include:	On Track
<b>Carbon + Biodiversity Pilot</b>	On Track
<b>Enhancing Remnant Vegetation (ERV) Pilot</b>	On Track
<b>Biodiversity Credit Exchange (BCE) Program</b>	On Track

## Saltmarsh Threat Abatement and Recovery (STAR) Project

The [Saltmarsh Threat Abatement and Recovery \(STAR\) Project](#) is being delivered thanks to funding from the Australian Government's National Landcare Program (NLP). The project focuses on temperate saltmarshes, part of a nationally Threatened Ecological Community, and the Hooded Plover, one of Australia's top 20 threatened fauna species. The project will be delivered until 2023. Priority works include access management, threat abatement, revegetation, weed management, improving hydrological flows, and removing marine debris. More information about the project can be found [here](#).

## Program highlights this period

### Region

#### Beach nesting birds

#### Hooded Plover nesting territory monitoring

- Fortnightly monitoring of Hooded Plover nesting territories for the 2022-2023 breeding season commenced across the region. This monitoring is undertaken annually from July to April to obtain data on the breeding success of this threatened species, and is part of the BirdLife Australia monitoring program. Data collected assists to determine hatching rate, fledgling success rate and threats to breeding success. This in turn informs the planning of intervention work, such as pest animal management or managing beach access, that is undertaken to improve the survival rate of eggs and hatchlings.
- In the **Eastern District**, monitoring of nesting territories has been undertaken at Port Gibbon and at Redbanks. Hooded Plovers have appeared at both sites, but monitoring has not detected any nesting activity at this stage.
- In the **Western District**, we are monitoring six Hooded Plover nesting territories, at locations ranging from Sheringa in the south to Cactus Long Beach in the north. Through our fortnightly monitoring,

we have already recorded three nests and one fledgling across the six sites this season. The first Hooded Plover chick for the new nesting season was spotted on a western EP beach ([Facebook](#) and [Twitter](#)).

- Six nesting territories are also being monitored in the **Southern District**. At one of the nesting territories, Point Boston, nests with eggs have been recorded.

### Migratory Shorebirds

- Migratory shorebirds are the world's most endangered group of bird species. Commonly referred to as waders, they are most often seen wading around wetlands, mudflats and intertidal areas to feed. Eyre Peninsula is fortunate to have a number of coastal areas recognised nationally as key shorebird areas. In Australia, there are more than 50 species of shorebirds and most of them are migratory.

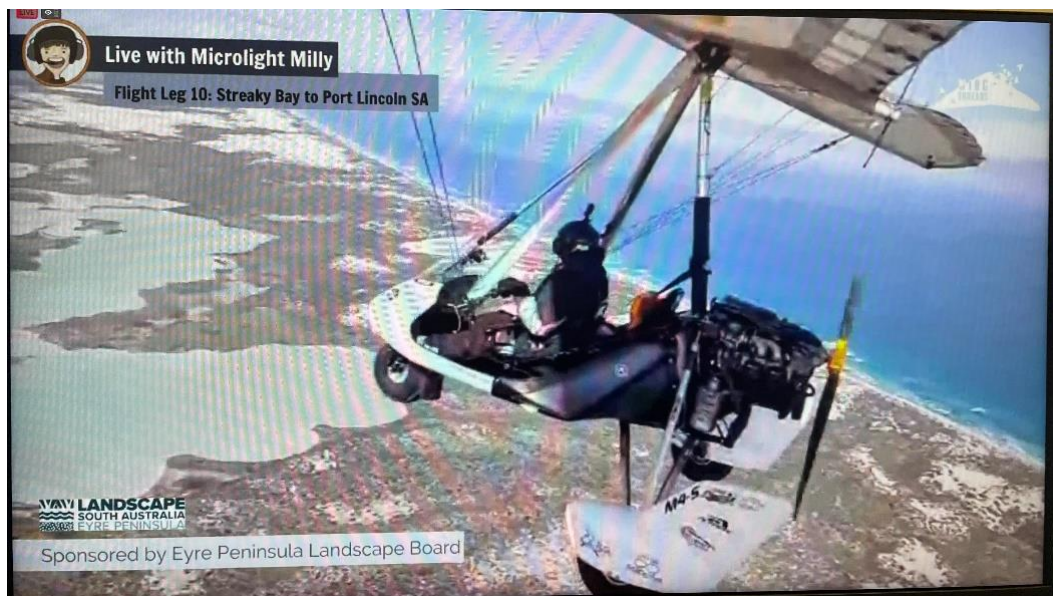
**Photo 4:** Flier advertising Milly's community talk in Port Lincoln

Milly Formby is currently undertaking a [flight around Australia](#) in her microlight plane to raise awareness amongst coastal communities and schools about migratory shorebirds, the journeys they travel, and the threats they are facing world-wide. She is circumnavigating Australia, her journey along Australia's coast of approximately 20,000 km almost mirroring the 25,000 km return trip migratory shorebirds travel each year to their northern hemisphere breeding grounds. Milly is a qualified zoologist, illustrator and co-author of the children's book 'A shorebird flying adventure', and on her journey she takes a free incursion to interested schools, sharing this book with students she visits.

When EP Landscape Board staff discovered Milly was due to fly past the Eyre Peninsula, they shared with local schools information about the opportunity of Milly running incursions at their schools. Five schools on Eyre Peninsula jumped at



**Photo 5:** Port Lincoln **Wingthreads** workshop delivered by Milly



**Photo 6:**  
Wingthreads YouTube Live Stream snapshot of Landscape Board sponsored Streaky Bay to Port Lincoln flight leg

the opportunity for Milly to visit, including Streaky Bay Area School (year 3-6 students) on western Eyre Peninsula, Lake Wangary Primary, Poonindie Primary and Tumbly Bay Area School on southern Eyre Peninsula and Cowell Area School on eastern Eyre Peninsula.

The EP Landscape Board also provided funding to assist Milly complete her Streaky Bay to Port Lincoln 'Wingthreads' leg of her microlight journey. Milly was also contacted directly to see if she was willing and able to deliver a community talk in Port Lincoln and she was more than happy to work this into her schedule. The EP Landscape Board collaborated with the Southern Eyre Bird Club to advertise and deliver this event. A two-hour evening presentation was delivered to a group of 39 attendees, including Southern Eyre Birds members, Lower Eyre Coastcare members, Southern Eyre Friends of Parks members, aviation enthusiasts and other interested community members. Milly also met with local bird volunteers and Landscape Board staff in Streaky Bay.

### **Saltmarshes**

- A *Report on Blue Carbon Storage in Western Eyre Peninsula Coastal Wetlands* was completed. The report, completed with support from the STAR project, the University of Adelaide, the South Australian Coast Protection Board and the Department for Environment and Water's Coast and marine branch, presents the result of a study undertaken to measure sediment carbon stocks at four saltmarsh and mangrove sites on the Western EP. The results are also compared to findings for a similar study undertaken measuring carbon stocks on the Eastern and Southern EP, as well as carbon stocks elsewhere in South Australia. The data from this study will support our work in planning blue carbon projects, and also provides data for the state's blue carbon inventory. The report will be available on our website soon.

### **Eastern District**

#### **Beach nesting birds**

- A winter National Shorebird count was undertaken at the Whyalla Saltpans. We almost missed doing our annual winter count this year, due to poor weather and other obstacles, but with the help of volunteers were able to undertake the survey. A huge thank you to our enthusiastic volunteers, Jim and Lorraine Walford, for conducting the count on 5<sup>th</sup> September. Their support has enabled us to ensure the data set is continuous. A few species of note that were counted were: one Ruddy



Turnstone (*Arenaria interpres*), two Bar-tailed Godwits (*Limosa lapponica*), and a good number of Red-necked Stints (*Calidris ruficollis*) and Sharp-tailed Sandpipers (*Calidris acuminata*).

### **Saltmarshes**

- All approvals, materials and contractors are in place, ready to carry out access management and revegetation works in the saltmarshes at Whyalla. We just need it to stop raining so we can get into the saltmarsh to carry out the works! Vegetation barriers, way finding signage and track ripping will all be carried out as soon as possible when the conditions allow for safe access to the work sites, while also avoiding damage to this fragile environment.



**Photo 7:** Vegetation barriers are to be installed to restrict vehicle access into sensitive intertidal zones in the saltmarsh at Murrup pi Beach near Whyalla.

### **Western District**

#### **Beach nesting birds**

- Work to manage feral predators in the Venus Bay Conservation Park has been ongoing. This work is being done in an effort to protect the Hooded Plover nesting territory located in the park from predators. This quarter we have been conducting feral predator monitoring using remote sensing cameras, and have detected both fox and cat incursions within Venus Bay Conservation Park.

A fox and cat culling program was therefore implemented in September, successfully removing a fox and a number of feral cats. This will help protect native species within the park, as well as the Hooded Plover nesting territory.

- Fox baiting and monitoring using remote sensing cameras has also been undertaken near the Dumpers Beach Hooded Plover nesting territory, to help protect this site from feral predators.

## Southern District

### *Beach nesting birds*

- An intervention activity to help improve Hooded Plover breeding outcomes was undertaken at Point Boston, with 14 students and two staff from Kedron State School in Brisbane participating. The group were spending some time around the Eyre Peninsula with *Untamed Escapes*, and were keen to be involved in and complete some local conservation work.

Marine debris has been identified as a key threat to nesting Hooded Plovers at Point Boston, so this provided a perfect opportunity to address this issue. Approximately two kilometres of coastline were cleared of debris. The debris will be sorted in the future and data submitted via [Tangaroa Blue](#).

A three-egg Hooded Plover nest was located and confirmed by a landscape officer prior to the group's arrival at the beach. The nesting area was therefore roped off to ensure the nest would not be affected by the clean-up activity. Students were also taken for a close up look of the nest, which helped to reinforce just how small and vulnerable the Hooded Plover eggs are.

### *Saltmarshes*

- A site visit was undertaken with District Council of Tumby Bay staff to identify and discuss access management options for the large coastal saltmarsh at Tumby Bay (First and Second Creek areas), which is being negatively impacted by unrestricted motorbike and vehicle access, and illegal dumping of household and garden waste. A discussion document highlighting the environmental impacts and management strategies was presented to Council and approval has been given by Council for us to investigate management options.



**Photo &** Students from Kedron State School, travelling with *Untamed Escapes*, assisted with removing marine debris from a Hooded Plover nesting territory as part of priority intervention work to help improve Hooded Plover breeding outcomes at the site

- Planning to develop a project to fence and protect an important threatened coastal saltmarsh area and recognised important migratory and resident shorebird area near Little Douglas is underway with landholders. The area is under threat from illegal off-road vehicle access, unauthorised camping and native timber clearing.

## Local government engagement for this period

### Eastern District

- A landscape officer has been working closely with Whyalla City Council to design and install way-finding signage to the Murrippi Beach and Eight Mile areas at Whyalla. These works should complement the access management works by giving one clear path for people to follow to get to these sights without damaging the saltmarsh.

### Western District

- Landscape officers have engaged with the District Council of Streaky Bay regarding Gazania and Boxthorn control in buffer areas around the Blancheport Samphire area. The collaboration aims to raise community awareness regarding the impacts of the declared species if left uncontrolled, and to also work together on hot spot areas surrounding the samphire.

### Southern District

- A 2022-2023 works approval form was completed for the District Council of Tumby Bay (DCTB) to gain permission for trained BirdLife volunteers and landscape officers to implement nest site intervention on Council managed beaches in line with the recently approved DCTB Hooded Plover Intervention Plan.
- A site visit was undertaken and discussions held with the District Council of Tumby Bay to highlight the environmental issues at the First and Second Creek saltmarsh areas. Planning is now underway to investigate on-ground works to protect this threatened coastal saltmarsh area.

## Communications and community engagement for this period

### Region

- We promoted the importance of marine debris awareness, sharing information about how marine debris impacts nesting Hooded Plovers ([Facebook](#) and [Twitter](#)).

### Western District

- We collaborated with NPWSSA to develop and install new shorebird and samphire signage at Three Springs in Lake Newland Conservation Park. The signage will educate visitors about the importance of the wetland and temperate saltmarsh habitat for shorebirds and water birds ([Twitter](#)).



**Photo 9:**

*New shorebird and samphire signage at Three springs in Lake Newland Conservation Park*



**Photo 10:**  
Workshop at Venus Bay Conservation Park with Stage 1 students from Streaky Bay Area School, demonstrating feral predator control using the Felixer Grooming Trap

- Two landscape officers hosted a workshop with the Streaky Bay Area School Stage 1 students at Venus Bay Conservation Park. The workshop covered collaborative management techniques, feral predator control, biodiversity and threatened species management. The workshop also discussed shorebird monitoring conducted under the STAR project and intervention work for the Hooded Plover.

### Southern District

- Working with National Parks and Wildlife Services SA (NPWSSA) rangers, new Hooded Plover signs have been added to trail markers for walking trails in Lincoln National Park. Hooded Plovers nest on a number of the National Park beaches, and this new signage will inform visitors when they are near a known Hooded Plover breeding territory. This should help visitors protect these threatened birds by recognising where they may be located so they can give them some space (promoted on [Facebook](#) and [Twitter](#)).
- The 'Wingthreads' community talk was advertised via both the [Landscape Boards](#) and [Southern Eyre Bird Clubs](#) social media pages.
- A media release highlighting the success of the 2021\_22 Hooded Plover breeding season was picked up by a number of media outlets including the ABC radio for a news items and for an [online article](#); and by Spencer Gulf Nightly news ([11 min mark](#)). 5cc and Magic FM produced an [online story](#) and the EP Advocate an [online edition story](#) and the story was printed in their Sept 22 newspaper edition.



**Photo 11:**  
New Hooded Plover trail signage in Lincoln National Park

## Upcoming priorities for the next period

### Eastern District

- Installation of vegetation barriers in the saltmarshes at Whyalla.

### Western District

- African Boxthorn and Gazania control in priority saltmarsh sites.
- We will be monitoring the Environment Protection and Biodiversity Conservation (EPBC) Act listed temperate saltmarsh Bushland Condition Monitoring sites. This monitoring is being undertaken to assess the health, condition of the ecosystem along with any threats, and will be compared against monitoring conducted under the same program three years ago.

### Southern District

- Coordination of the National Hooded Plover Biennial Count for the Eyre Peninsula Eastern and Southern Districts in November.
- Prioritising interventions that are to be implemented at Hooded Plover breeding territories and nesting sites based on the results of early nesting attempts, and losses recorded. These interventions will be designed to address key problems that are negatively impacting breeding success this season.

## Eyes on Eyre

The [‘Eyes on Eyre’](#) concept was formulated in 2016 with a collective involving three organisations: the Eyre Peninsula Local Government Association, Eyre Peninsula Landscape Board and Regional Development Australia Whyalla and Eyre Peninsula (RDAEP), coming together to form a working group to face the challenge of improving outcomes for the environment and visitors. The Department for Environment and Water have joined this collective as well. The aim of Eyes on Eyre is to enable more people to enjoy and appreciate the spectacular coastline and avoid impacts on the natural environment. This is being done by implementing a cohesive, region wide strategy for the sustainable management of visitor access. Eyes on Eyre will be delivered in a staged approach on an ongoing basis to see incremental positive change over time. Funding for the project has been secured from multiple sources. Most recently \$500,000 was acquired from the Department for Environment and Water (DEW) [“Parks 2025”](#) initiative and \$710,000 has been secured from the [Landscapes SA Landscape Priority Fund](#).



**Photo 12:**

Completed works at Point Gibbon (District Council of Franklin Harbour) to improve the visitor experience and protect the environment

## Program highlights this period

- Staff have continued to work with the Eyes on Eyre Working Group and coastal councils to help them deliver camping node infrastructure upgrades and the online booking system using the \$500,000 acquired from the Department for Environment and Water (DEW) "Parks 2025" initiative. Agreements have been signed with the District Councils of Elliston, Franklin Harbour and Lower Eyre Peninsula for works at Walker's Rock, Point Gibbon and Fishery Bay respectively. Works include sheeting of campsites, fencing to exclude vehicles from sensitive areas and revegetation activities.



**Photo 13:** An example of new signage placed at Point Gibbon Campground

- Following in the District Council of Elliston's footsteps, and with the support of Eyes on Eyre member organisations, the District Council of Franklin Harbour has successfully opened their first campground (Point Gibbon) to [BookEasy online booking](#).

Also with assistance from Eyes on Eyre member organisations, the District Council of Lower Eyre Peninsula will move all of their coastal campgrounds to the BookEasy online booking system in October. The uptake on the BookEasy online booking system is a huge milestone and other councils, including City of Whyalla, District Council of Cleve and District Council of Streaky Bay, plan to sign up as well in the near future. This will lead to improved environmental management and visitor experience at the regional scale.

- Staff continued the delivery of the Landscapes SA's *Landscape Priorities Fund* project titled "Eyes on Eyre – restoring the health of Eyre Peninsula's coastal environment". The \$710,000 project will be delivered over three years. The project will mainly focus on campground improvement works to create a minimum and consistent standard across the region, while addressing environmental issues. Works are expected to include elements such as track rationalisation, revegetation, targeted control of pests and weeds, and installation of regionally consistent signage. Grant agreements are now in place with the City of Whyalla, the District Council of Cleve, the District Council of Lower Eyre Peninsula, and the District Council of Streaky Bay for activities to occur over the next three years. There will likely be a second funding call in late 2022 to allocate the remaining funding.

## Local government engagement for this period

- There is ongoing engagement with all local councils on Eyre Peninsula about this project.

## Communications and community engagement for this period

- A social media post in August supporting the District Council of Franklin Harbour upgrades to the point Gibbon campground.
- Staff have been working with the [Lower Eyre Coastcare Association](#) in relation to some of the works in District Council of Lower Eyre Peninsula area.
- Eyes on Eyre was showcased at the SA Coastal Councils Alliance 2022 Coastal Forum in late September.

- A presentation about Eyes on Eyre was provided to the Minister for Tourism in late September.

### Upcoming priorities for the next period

- Staff will continue to deliver the Landscapes SA Priorities Fund project and assist with delivery of the funding acquired from DEW which is being managed by RDAEP.

## Blue Carbon

*The EP Landscape Board is working to support the implementation of the [Blue Carbon Strategy for South Australia \(2020-25\)](#), partnering with other agencies to advance blue carbon initiatives, particularly focusing on temperate saltmarsh restoration.*

### Franklin Harbour Blue Carbon Scoping Project

*We are collaborating with the District Council of Franklin Harbour, Department of Infrastructure and Transport, DEW and the Coastal Protection Board on a blue carbon scoping project at Franklin Harbour. The Eyre Peninsula Landscape Board and Coastal Protection Board have committed funding to commission a feasibility study for the project.*

*Stage one of the project comprises baseline scoping to look at the possible upgrade of the culvert passing under Lincoln Highway at Franklin Harbour to improve tidal connection to the wetlands located landward of the highway. This would result in improvement in condition of the wetland and also increase in the extent of mangroves, with the resultant increase in the amount of blue carbon captured in the mangroves and wetland. The feasibility study will entail detailed survey and hydraulic modelling of the area to get a better understanding of the extent to which the mangroves and wetland would increase with improved hydraulic connectivity to the ocean.*

### Program highlights this period

- The project plan for the Franklin Harbour Blue Carbon Scoping Project has been finalised.

### Local government engagement for this period

- Discussions have been held with the District Council of Franklin Harbour staff on progress of the Blue Carbon Scoping Project

### Upcoming priorities for the next period

- Surface water modelling for the Franklin Harbour Blue Carbon Scoping Project will commence.
- Procurement of vegetation surveys to inform the project will also commence.
- A bathometric survey of channels at Franklin Harbour will be completed.

### Other program highlights

- Board staff attended the South Australian across-agency Blue Carbon Coordination Group meeting. This meeting is an important forum for us to collaborate with other agencies who are active in the Blue Carbon space across the state, and share knowledge and expertise in this emerging field.
- As discussed in the Saltmarsh Threat Abatement and Recovery Project section, a *Report on Blue Carbon Storage in Western Eyre Peninsula Coastal Wetlands* was completed. The report presents the result of a study undertaken to measure sediment carbon stocks at four saltmarsh and mangrove sites on the Western EP, and together with results from a similar study completed in 2021 for sites on the Eastern EP, will support our work in planning blue carbon projects, and also provides data for the state's blue carbon inventory. The report will be available on our website soon.

### Other upcoming priorities for the next period

- We will provide a high level summary of Blue Carbon projects on the Eyre Peninsula for inclusion in a presentation by the State Minister at COP27 and also for a briefing to the Minister.

## Cummins Wanilla Streamcare Group infrastructure upgrade project

*The Cummins Wanilla Basin contains a vast network of surface water and groundwater drainage channel systems that have been developed over many decades to support agricultural production and address issues such as dryland salinity, waterlogging, erosion and sedimentation. Up to 85,000 hectares of Eyre Peninsula farming land in the basin is increasingly being affected by poor drainage. To address these and other issues in the catchment, the Cummins Wanilla Basin Streamcare Group commissioned the development of a [basin management plan](#). They have also secured \$250,000 in funding from the State Government's [Regional Growth Fund](#) to support the implementation of the plan, through the maintenance and development of priority drainage infrastructure required to maintain the function of the catchment, improve hydrology for the purpose of supporting agricultural production and address issues such as dryland salinity, waterlogging, erosion and sedimentation.*

*This funding is being made available to landholders in the affected area through a grants program administered by the EP Landscape Board on behalf of the volunteer Streamcare Group. Landholders, land managers and councils within the basin are eligible to apply for grants of between \$2,000 and \$30,000 to complete work that upgrades and maintains existing drainage infrastructure. Grant recipients need to commit at least a 50% matching contribution which can include in-kind contribution through their labour and use of machinery costs.*

### Program highlights this period

- We have continued to promote the drainage infrastructure grants available under this project ([Twitter](#) plus a series of radio ads on 5cc from Sept 12-19), but there has been continued low uptake. In an effort to promote the project and increase grant uptake, print media advertising has been developed and is booked to go on local radio and in newspapers in October 2022.

### Upcoming priorities for the next period

- We will continue to work to increase uptake of the funding program by the community. This will include:
  - responding to enquiries about the project,
  - assisting the community in project planning and with their grant funding applications, and
  - assessing grant applications.
- We will also continue to grant projects which are already underway, working proactively with grantees on delivery of their approved projects.

## Biodiversity Monitoring Program

*As part of our Monitoring, Evaluation, Reporting and Improvement (MERI) plan, the Board established the Biodiversity Monitoring Program in 2015-2016. Under this program 300 sites across the region are being monitored on a ten year rotational basis, using the [Bushland Condition Monitoring methodology](#). The method enables us to get an understanding of what change is occurring in different vegetation types, and determining threats to habitats and native animals.*

### Program highlights this period

- Spring 2022 Bushland Condition Monitoring began in September, and our annual Bushland Condition Monitoring across the Eyre Peninsula is underway. Whilst out and about our landscape officers have been seeing positive recruitment of native understorey species, native grassland regeneration and good structural diversity of ground cover including moss, lichen and microphytic crust due to good winter rainfall. Of course, rain also means weeds are thriving on these sites, like so many areas across the EP.





**Photo 14:** A Bushland Condition Monitoring site near Walkers Rock.

## Communications and community engagement for this period

- Social media post in late September talking about the Bushland Condition Monitoring Program ([Facebook](#) and [Twitter](#)).

## Upcoming priorities for the next period

- Spring 2022 Bushland Condition Monitoring will continue into November. Datasheets will be sent to the Nature conservation Society of SA for data entry into the statewide database.

## Collaboration on landscape-scale projects

*The EP Landscape Board collaborates with multiple organisations, from federal through to local level, to source funding to deliver landscape scale projects which contribute to the conservation and enhancement of prioritised ecosystems.*

### **Carbon + Biodiversity Pilot**

*The Eyre Peninsula Landscape Board region is one of six pilot regions across Australia for the program which is part of the [Agriculture Stewardship Package](#) being delivered by the Australian Government. As part of this package, [this "C+B" pilot](#) has been established to develop arrangements and provide mechanisms to support and reward farmers for increasing biodiversity and storing carbon through undertaking revegetation. The Board has been assisting with delivery of this pilot and are now providing support to successful applicants who are commencing implementation of their C+B projects.*



**Photo 15:**

Australian Government representatives visit Ray and Sam North who were currently undertaking their planting for their C+B project.

### Program highlights this period

- Four of the successful applicants from the Eyre Peninsula have taken up offers from the Australian Government and have commenced implementing (undertaking revegetation) their C+B projects. Three of these applicants were supported by EP Landscape Board through the application process and are receiving continued support. These projects will bring investment into the region through Australian Government funding to landholders for project establishment, and carbon credit income.

### Upcoming priorities for the next period

- We will continue to support the three applicants we supported through the application process, to now successfully deliver their projects.

### Enhancing Remnant Vegetation (ERV) Pilot

*This is the [second pilot](#) which is also part of the [Agriculture Stewardship Package](#) being delivered by the Australian Government. It aims to improve existing native vegetation on farms and is trialling mechanisms to pay participating farmers to manage and enhance significant remnant native vegetation on-farm, through activities such as installing fencing to exclude grazing, carrying out weed control, pest control and replanting. EP Landscape Board is supporting the delivery of this project. Following completion of the application stage, Board staff will be providing support to landholders for initial project delivery.*

### Program highlights this period

- Seventeen applicants from the Eyre Peninsula have been successful, and are commencing implementing their ERV projects. Most of these applicants were supported by EP Landscape Board through the application process. This pilot will bring about \$2.2 million to the region through Australian Government funding to landholders for delivery of these projects, should all landholders accept the offers from Federal Government.
- Australian Government representatives visited EP to meet with land managers involved in the ERV and C+B projects in September. Board staff coordinated this visit which both the land managers and Australian Government representatives found very informative.

## Communications and community engagement for this period

- Ongoing communications with all the applicants.

## Upcoming priorities for the next period

- Continue to support the applicants to successfully deliver their projects.

## Biodiversity Credit Exchange (BCE) Program

*This program is being delivered by the Department for Environment and Water (DEW) and the Eyre Peninsula Landscape Board on behalf of the Native Vegetation Council (NVC). This program gives eligible land managers access to funding to manage and protect areas of native vegetation on their land to generate biodiversity credits. For more information about the program refer to our website [here](#).*

## Program highlights this period

- Board staff continued to deliver this project throughout this quarter. Applicants registered their interest between 1 - 27 of July 2022. In August and September staff visited the ten applicants to assess eligibility and then after getting approval from the Native Vegetation Council undertook vegetation assessments on eight applicant's properties.

## Communications and community engagement for this period

- Social media posts in July talking about the BCE opportunity ([Facebook](#) and [Twitter](#)).

## Upcoming priorities for the next period

- In the next quarter information collected from site assessments will be written up into a report for the Native Vegetation Council and the eight applicants will be asked to provide bids for the amount of money they require to undertake the works identified to improve the remnant vegetation that was assessed.



**Photo 16:**  
*Site assessment being undertaken near Cleve*

# Community

Focus areas and priority programs	Status
<i>Community at the centre and actively engaged in landscape management</i>	
Review and improvement of the <b>citizen science program</b> ; providing meaningful opportunities for volunteers and groups to get involved and value the natural environment	
Supporting Aboriginal and community groups, Local Government, farming groups and schools to progress natural resource activities through the provision of the <b>Grassroots Grants program</b>	
<i>Effective decision-making and Local Government engagement</i>	
Effective <b>leadership and governance</b> of the Board and its business, to meet legislative requirements, including:	
<b>Board meeting highlights</b>	
<b>Referrals</b> (including Stormwater management) received and responded to	

## Program highlights this period

- The EP Landscape Board sponsored two Eyre Peninsula farmers, Judy from Butler and Ellen from Buckleboo, to attend the [WoTL Thriving Women 2022 Conference](#). [WoTL](#) (Women Together Learning) is an SA organisation that focuses on growing and inspiring women in agribusiness. Judy and Ellen spent the two days of the conference soaking up information from inspiring speakers which they can take back to their farms to help them have a sustainable future in agriculture.

## Citizen Science Program

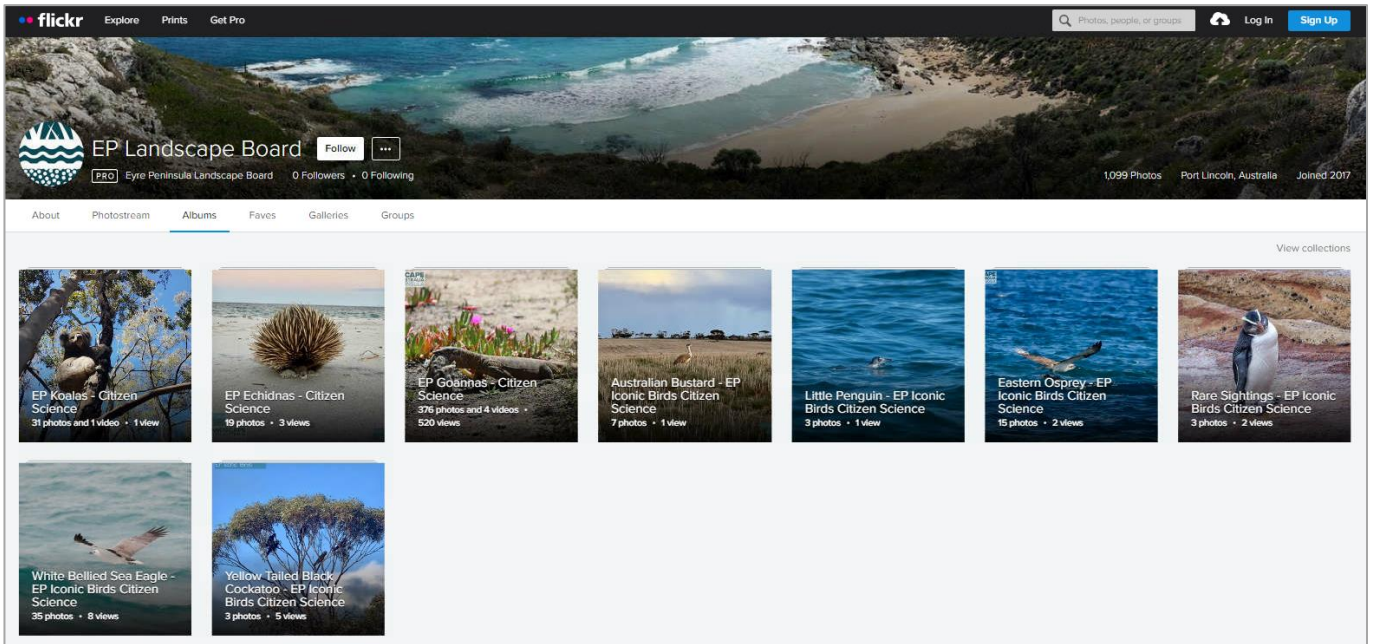
*The Eyre Peninsula Landscape Board supports [citizen science](#) as an innovative and exciting way of engaging the community, while increasing our knowledge of Eyre Peninsula's natural environments. We support a number of projects that community members can get involved in.*

## Program highlights this period

- We run a number of citizen projects where community members can report opportunistic sightings of specific species via specific web-portals. A project to enter all the data received through these projects into the [Biological Database of South Australia](#) was completed this quarter. This data is now available to the public via [Nature Maps](#) and metadata can be found [here](#). A total of 1,562 new data records, were added to the database, including records of Goannas, Malleefowl, Echidnas, Koalas, and what we call our "Iconic Birds" - Eastern Osprey, White-Bellied Sea Eagle, Little Penguin, Bush Stone-Curlew, - Yellow-Tailed Black Cockatoo, and Australian Bustard.

We have also updated all the online albums of photographs submitted by citizen scientists, and these can be viewed [here](#).

We would like to thank all the citizen scientists who have generously contributed data, photographs and time to these projects. Please keep reporting your sightings.



**Photo 17:** EP Citizen Science photo albums

## Local government engagement for this period

- Our citizen science projects have been promoted on social media ([Twitter](#) and [Facebook](#)).
- It was King Tide time again in July and the community were asked to report sightings of tides on [Facebook](#) and [Twitter](#). Unfortunately no sightings were reported.

## Upcoming priorities for the next period

- A project to enter all our EP Bird Survey data collected by citizen scientists will be implemented.

## Grassroots Grants Program

The Grassroots Grants program supports individuals, volunteers, community groups and other organisations working on a not-for-profit basis, with local landscape management projects. Grants are awarded annually. Reporting on support provided by Board staff to grant applicants, as well as monitoring of grants awarded and acquitted is included in the **Grassroots Grants program** sections in the district [Quarterly Business Plan Achievement Reports](#).

## Program highlights this period

### 2021-2022 Grassroots Grants

- One more of the 2021-2022 Grassroots Grants projects was successfully completed, the Whyalla City Council's *Point Lowly and Santos Escape Road - Irrigation and vegetation protection project*. There is one project that must still be completed (*Restoring Eyre Peninsula (EP) Blue Gum woodlands and managing saline soils*), and grantees are just waiting on the right weather conditions so this project can be completed too. For details of these projects please visit our Eastern District [Business Plan Achievement Reports](#) for this quarter.

### 2022-2023 Grassroots Grants and Storm Recovery Grants

- Work on the 2022-2023 Grassroots Grants projects (Table 1) commenced this quarter, and are all at various stages of delivery. For progress on individual projects refer to our 2022-2023 First Quarter [Business Plan Achievement Reports](#) for the Eastern, Southern and Western districts.

Table 1: EP Landscape Board Grassroots Grants - 2022-23 successful applicants

	Project Title	Organisation	Amount Funded
1	Raising weed awareness at Ungarra	Ungarra & Districts Hall & Progress Association	\$5,000
2	Big Swamp Wetlands Citizen Science Project	Big Swamp Community Centre Incorporated for the Big Swamp Conservation Group	\$5,000
3	Creating a Butterfly Garden and Trail at Navigator College	Navigator College	\$5,000
4	Protecting coastal sand dunes at Carrow Wells	Port Neill Progress Association	\$15,000
5	Lower Eyre Peninsula Home School Landcare Workshops	Lower Eyre Peninsula Home Schoolers Group Sponsored by the Lower Eastern Eyre Peninsula Landcare Management Committee Inc.	\$4,920
6	<i>Acacia whibleyana</i> re-population	Tumby Bay Area School	\$3,698
7	Restoration of Wedge Island – Stage 1: The thin edge of the Wedge.	Wedge Island Management Association Inc.	\$15,000
8	Vegetation protection and rehabilitation, Greenly Beach	Lower Eyre Coastcare	\$15,000
9	Weed control and vegetation protection and rehabilitation, Coffin Bay Foreshore	Lower Eyre Coastcare	\$8,500
10	Pildappa Rock Recreation Reserve Revegetation Project	Wudinna District Council	\$15,000
11	Protecting Our Soils Through Improved Grazing Management – Part 2	WoTL (Women Together Learning) Ltd	\$10,100
			<b>\$101,485</b>

## 2021-2022 Grassroots Grants – Regional Projects

### Entering the significant environmental benefit offsets market - A case study

There are numerous unrealised opportunities for Eyre Peninsula land managers to enter the Significant Environmental Benefit (SEB) Offset market and gain improved natural resource management outcomes and diversified income streams. Through this project, the Nature Foundation will develop and publicise a case study explaining the practical details of establishing a SEB offset site including financial implications which have, to date, proven to be a significant barrier to entry into this market. This information will provide impetus for Eyre Peninsula land managers to investigate these opportunities on their land.

### Program highlights this period

- The landholder involved in the case study is continuing negotiations to sell his SEB offset. The case study has been completed and is located on our website [here](#). A short article has been written to hopefully go into the next EP Farming Systems publication.

### Communications and community engagement for this period

- Continued discussions with the case study landholder and the Nature Foundation.

### Upcoming priorities for the next period

- The project is complete.

## Leadership and governance

### *Board meeting highlights*

#### Program highlights this period

The Board held one meeting during this period, which was on 16 August, in Whyalla. Highlights from that meeting included:

- Primary Industries and Regions SA (PIRSA) gave a presentation related to the SA Feral Deer Eradication Program, which is currently being scoped across multiple Landscape regions of South Australia. The Board has some satellite populations of deer located throughout the region and if the program is successful, it may be worthwhile for the Board to consider involvement in the program in the future.
- There was also a presentation about the proposed Andromeda Metals, Kaolin mine which will be located near Poochera.
- A draft Business Continuity Plan was presented to the Board for their endorsement. This plan provides a framework of how the Board will be able to maintain critical operational functions when business is interrupted (e.g. through things such as major power outages, communications outages, through to natural disasters etc.).
- The Board uses levy funds to leverage external funding where possible, and at this meeting the Board was provided with information in relation to two projects applications that they are submitting to the next round of the statewide [Landscape Priorities Fund](#) program. One project is based around coastal on-ground works undertaken around the region, and the other is about linking the recovery of a threatened ecological community to a carbon farming opportunity. Results of these applications will be known later in the year.

#### Local government engagement for this period

- Members of the Whyalla Council attended the meeting at lunchtime and the Eastern District Team Leader presented an overview of all of the work being undertaken in the region.

#### Communications and community engagement for this period

- Nominations for all the SA Landscape Boards opened on 22 August, and closed on 30 September. This was promoted statewide and locally through social media ([Facebook](#), [Twitter](#)) and news stories (5cc and MagicFM [online news](#)). Aboriginal people were encouraged to apply ([Twitter](#)).

#### Upcoming priorities for the next period

- The next Board meeting is scheduled to be held in Coffin Bay on 18 October 2022.

## **Referrals (including stormwater management)**

*The Eyre Peninsula Landscape Board has formal referral responsibilities (such as commenting on development applications or stormwater management plans) and informal responsibilities (such as providing feedback on associated legislative changes, significant discussion papers or plans). These matters need to be responded to in a timely manner and often require the consolidation of feedback from across the organisation.*

## **Program highlights this period**

There were a total of seven referrals commented on in this period, which included:

- Siviour Graphite Mine Program for Environment Protection and Rehabilitation (PEPR);
- The SA Government Stormwater Expert Panel;
- Draft Great White Kaolin Mine PEPR
- Draft management plan for parks in the south eastern Eyre Peninsula region;
- Aquaculture application for a new land-based licence in Green Patch;
- Natural Resources Committee inquiry into biochar; and
- Draft City of Whyalla Animal Management Plan 2022-2027.

## **Upcoming priorities for the next period**

- Board staff will continue to provide feedback in a timely manner relating to the Board's formal and informal referral responsibilities



Published by the Eyre Peninsula Landscape Board.  
15 November 2022

**T: Port Lincoln** 08 8688 3200

Landscape staff based in Port Lincoln providing support for our operations across the Eyre Peninsula

**General Manager Eyre Peninsula:** Jonathan Clark

**Manager Planning and Business Support:** Susan Stovell

**Senior Finance Officer:** Lynn Smith

**Administration and Finance Officer:** Dilip Baptist

**Governance and Administration Officer:** Jasmin White

**Planning and Assessment Officer:** Andrew Freeman

**Communication and Engagement Officer:** Katrina Phelps

**Monitoring, Evaluation and Reporting Officer:** Michelle Clanahan

**Landscape Operations Manager:** Seb Drewer

**Senior Water Resources Assessment Officer:** Dave Cunningham

For details of our **Operations Staff** in our Port Lincoln and other offices, please refer to our [Business Plan Achievement Reports](#) for the Southern, Eastern and Western Districts.

**T: Tumby Bay** 08 8688 2610

**T: Whyalla** 0427 188 546 or 0488 000 481

**T: Cleve** 0428 282 077

**T: Streaky Bay** 08 8626 1108

**T: Elliston** 08 8687 9330

**T: Wudinna** 08 8680 2653

**T: Ceduna** 0428 252 442 or 0409 849 820

**E:** [EPLBAdmin@sa.gov.au](mailto:EPLBAdmin@sa.gov.au)  
[www.landscape.sa.gov.au/ep/home](http://www.landscape.sa.gov.au/ep/home)

Report prepared by:

**Eyre Peninsula Landscape Board**

with input from **Agricultural Innovation and Research Eyre Peninsula** (AIR EP) who deliver the Regenerative Agriculture Program and Regional Agricultural Landcare Facilitator services on behalf of the Eyre Peninsula Landscape Board.

**AIR EP**

**T:** 0428 540 670

*Executive Officer:* Naomi Scholz

*Regional Agricultural Landcare Facilitator:* Amy Wright

**E:** [eo@airep.com.au](mailto:eo@airep.com.au)



With the exception of the Piping Shrike emblem, other material or devices protected by Aboriginal rights or a trademark, and subject to review by the Government of South Australia at all times, the content of this document is licensed under the Creative Commons Attribution 4.0 Licence. All other rights are reserved.