



CARING FOR COUNTRY

- 02 Safe Work training in the AW
- 04 Restoring Koonalda's buildings
- 06 WA Bellfrog on the move
- 10 Working together on Country
- 12 Fighting Buffel on the Rail line
- 18 AW's Water Plan Approved
- 19 Community Conservation day a great success





What's happening

AW weather stations

Check out data from the weather stations in the AW region on...
<http://aws.awnrm.sa.gov.au/>

Spinifex Country exhibition

5 October - 8 December 2013

At two sites: Flinders University City Gallery and the South Australian Museum's Australian Aboriginal Cultures Gallery

Next AW NRM Board meeting:

11th- 12th Dec

Venue: Tiffins on the Park, Parkside

Anniversary of the first Aboriginal Governor of SA, Sir Douglas Nicholls

01 December, 2013

Carols by Candlelight Alice Springs

08 Dec 2013 at 6:00 PM
Contact: Amanda Agnew,
amanda.agnew@aus.salvationarmy.org

From the Regional Manager



Welcome to the quarterly publication of the Alinytjara Wilurara Natural Resources Management Board. Through this busy period we have made significant progress on achieving many of our long term objectives not the least of which is having the Water Plan for the Alinytjara Wilurara (AW) region officially approved as part of the 2013-2014 AW NRM Board Business Plan.

Over the next month our Manager, Sustainability, Planning and Reporting, Neil Collins together with Water Consultant Paul Dalby, who were instrumental in developing the Plan, will be travelling throughout the AW region to explain how the Water Plan works and the benefits it represents to the communities (please see article on page 18) and to talk to communities about ideas on feral animal control.

Nine rockhole recovery projects have now successfully been implemented across the AW region. With three key *Dreamweaver* project bases and a strong interest continued by Anangu women for ongoing projects, work will continue to be undertaken and provide the ongoing opportunity for women to pass on cultural knowledge as well as care for country.

Supporting the management of Buffel Grass in South Australia, AW's Manager, Landscapes, Conservation and Public Lands, Justine Graham has recently taken up the position of Chair of the State Buffel Grass Taskforce. In addition the AW NRM Board's most recent recruit Gary Lewis, is also an active member of the Taskforce.

Along with many other State departments we have recently undergone some changes designed to more efficiently and effectively deliver natural resource management outcomes. As part of this some staff restructures have been put into place. We will also be changing the current location of our Adelaide office in early November to DEWNR's Keswick building.

Together we look forward to creatively and enthusiastically working to achieving the goals we have set for the months ahead and into the future.

Matt Ward

Regional Manager, Natural Resources Alinytjara Wilurara

Where we are and what we do

The Alinytjara Wilurara Natural Resources Management Region covers the northwest quarter of South Australia. In Pitjantjatjara, *alinytjara* means 'north' and *wilurara* means 'west'. The Region spans more than a quarter of a million square kilometres and has a population of approximately 2000 people, many of whom identify with the Pitjantjatjara, Yankunytjatjara, Ngaanyatjarra, Kokatha, Mirning or Wirangu peoples.

Natural Resources Management (NRM) is an approach to protecting land for the mutual benefit of people and the environment.

The AW NRM Board is the only all aboriginal NRM Board in Australia.



Water Plan protects community water

(page 12)

02 Working Safe in the AW region

Training in Oak Valley and Yalata

03 Protection for Nullarbor Plain

Nullarbor Plain receives SA's highest conservation protection

03 Collaborating to restore buildings

Restoring buildings at Koonalda Homestead



05 Spinifex Country Exhibition

Historic photographs and contemporary works of art

06 Focus on a Frog

WA's Spotted-thighed Bellfrog on the move



09 Dreamweaver

10 Working together on Country

Tjintirrkara Rockhole



12 Buffel on the Line

EP and AW join forces to fight Buffel Grass Trans-Australia Rail line

13 Who lives in the GV Desert

Friends of the Great Victoria Desert share their knowledge

14 Benefits of camel management



Nullarbor National Park and Yalata Indigenous Lands

16 Warru recovery annual report

Warru Recovery Team

17 Beware Feral Felines...

New feral cat management progress

18 Changes to Water Plan Approved

Water Permits in the AW will help save community water

19 Googs Lake: even more beautiful

Responding to local community



19 A Whale of a Day

Community gets together for fun day

20 Yellabinna Reserve Management

New management plan for Australia's largest intact mallee woodland

21 Welcome new Board Members



21 Tips for remote drivers

Caring for your vehicle's battery

From the Presiding Member



Welcome to our Spring edition of *Caring for Country*, 2013.

In the last few months the Board has focussed

on consulting and developing closer relationships and working partnerships with community leaders across the AW region.

We are also delighted that the Water Plan has now been officially embedded into our NRM Business Plan. The Board was congratulated by developers for their significant contribution to the Water Policy and Plan, and pointed out the uniqueness of this achievement in that it was driven by Aboriginal people taking into consideration their on-ground as well as cultural issues.

The Board has also been involved in supporting best ways to have Anangu working in direct, tertiary and secondary employment with NR AW. Working closely with the NR AW's Community Engagement Manager we will continue to build capacity within communities and utilise the skills of local people.

Discussions related to the new APY Partnership Agreement have also been undertaken with the Board requesting they be involved in the process to ensure NRM values are duly considered and to ensure Anangu leadership can be more effective in their negotiations with government.

Parry Agius
Presiding Member
Alinytjara Wilurara Natural Resources Management Board



There's no Shame in Working Safe

Facilitated by Chris Rafanelli (TAFE SA) and Bruce Macpherson (Natural Resources Alinytjara Wilurara)

Written by Bruce Macpherson, Manager Community Engagement NR AW

Workplace Safety Course attendees look over the Yalata Shed

Since early 2012, Natural Resources Alinytjara Wilurara (NR AW) has been working with both Yalata and Oak Valley communities to achieve land management outcomes. While the use of contracts for service delivery has proven successful in achieving both natural resource management and aboriginal employment outcomes, concerns have been raised about the safe working practices of the crews in both communities.

AW approached the CEO of Yalata, Greg Franks, who was highly supportive of a cooperative approach to the issue of Work Safety. Subsequently NR AW talked with the communities concerned and was fully supported to move forward with delivery of work safety training.

Through discussions with TAFE SA in Port Pirie it became apparent that while there were standard Workplace Safety courses available, there were none specifically tailored to the complex realities of indigenous work crews in communities. In consultation with Yalata Council, and TAFE SA we set about designing one.

The course was offered to each Supervisor in Oak Valley and Yalata, with one or two of their 'leading hand' workers. Over 25 people attended for various periods of time.

Chris Rafanelli from TAFE SA and Bruce Macpherson (NR AW) facilitated delivery of the training.

Workplace Safety was discussed in the context of the range of work crews active in Yalata and the complexity of the work environment, culturally, environmentally, linguistically and educationally.

The course aimed at:

- Increasing understanding of the new Work Health and Safety Act (2012) and its implications
- Providing a starting point to develop a structured approach to improving Workplace Safety in Yalata and Oak Valley
- Assisting workers in Yalata to describe the issues they see in developing a safer work environment in Yalata and Oak Valley communities
- Making recommendations to Yalata Community Inc. on ways to progress WorkPlace Safety.

Delivering the Course

The course was run over one and a

half days on 9 -10 April 2013. Sessions were kept short and involved regular work group discussions, to ensure that participants were able to relate content back to their work place. PowerPoint presentations were used for specific modules, such as the summary of the new Work Health and Safety Act 2012. Apart from this, delivery was interactive.

On the final day, Aboriginal staff had the opportunity to discuss issues of concern to them, facilitated by NR AW's Project Officer Nathan Williams, an Aboriginal man with family connections to many of the Yalata participants.

Participants

Attendees included three people from Oak Valley Community Land Management Team and Yalata had representatives from the Landscaping Crew, Land Management Crew, CDEP, Youth Mentoring Program, Night

Bruce Macpherson delivers training on Safe Work practices



Patrol, Municipal Services and Yalata Community Service Hub.

Discussions that took place covered many important issues including that:

- Aboriginal workers need to be at the forefront of developing, implementing and monitoring Safe Work Policies and Procedures to ensure sustainability.
- A suitable contractor (Safework SA accredited) should be employed to undertake formal, objective workplace safety audits and recommend infrastructure and behavioural changes.
- The position descriptions for all Supervisory roles need to include a commitment to the implementation and management of Work Safety Policies and Procedures, against which performance will be measured.
- There is a need for standardized Work Safety Policies and Processes across all Yalata Work Crews.
- All workers within the community should be required to undertake a Workplace Safety Course (with Pitjantjatjara interpretation) and to gain a White Card as a minimum qualification. Ideally a refresher course should be run annually.
- There needs to be a clear and unambiguous system developed for identifying, reporting and addressing lapses or breaches in Work Safety across the various enterprise arms. This should be a no blame process.
- There needs to be clearer lines drawn between work culture and traditional cultural activities. For example, the use of firearms during work hours.
- The remote nature of Yalata Community means that any workplace safety incident could be critical in terms of gaining appropriate medical support. This has several implications.

Health services need to be involved in



Con Millar (Oak Valley Land Management), Bruce Macpherson, Barry Hunter (Yalata Plant Nursery), Chris Rafanelli (TAFE SA)



NR AW's Coast and Marine Officer, Yasmin Wolf takes a quick breather from training

discussions on medical responses to workplace incidents.

All staff need training in emergency medical support.

The use of Spot Trackers, Satellite phones and scheduled check-ins must be incorporated into daily work schedules.

Summary:

Workplace Safety is all about Cultural Change. This Course has raised the issue of Workplace Safety with Supervisors and workers, but does not pretend to have resolved them. AW is committed to support the further development of Workplace Safety in Yalata as much as possible. We thank the Yalata staff who attended the course for their insights, enthusiasm and willingness to share them.

Highest level of protection for Nullarbor Plain

The iconic Nullarbor Plain has received South Australia's highest level of conservation protection.

The State Government has proclaimed the region a Wilderness Protection Area, doubling to 1.8 million hectares the amount of land now protected under the Wilderness Protection Act.

Sustainability, Environment and Conservation Minister Ian Hunter MLC says the new Nullarbor Wilderness Protection Area has been created using 900,000 ha of land from the former Nullarbor National Park, and a portion of the Nullarbor Regional Reserve.

"It's an iconic South Australian landscape, with open, flat plains and spectacular cliffs. It's also one of the largest semi-arid karst environments in the world (landscapes that are formed by the dissolution of soluble rocks such as limestone, and feature caves and sinkholes).

"About 390 species of plants and 160 species of animals live in this region, and will benefit from the increased protection - including rare species such as the slender-billed thornbill, the Australian bustard and the Nullarbor daisy."

The proclamation of the Nullarbor Wilderness Protection Area is consistent with the objective of conserving the full range of South Australian ecosystems in Conserving Nature 2012-2020: A strategy for establishing a system of protected areas in South Australia.



Caring for Public Lands and Heritage

Taking a collaborative approach

From left to right: Michael Burgoyne (cabinet maker, supervisor) James Peel, Trevor Peel, Ethan Ware (all from Yalata), Stevie Harrison (Yalata- builder, supervisor), Anthony Kennedy (Pt Lincoln) Andrew Cox (Yalata), Stevie Harrison jr (Yalata)

The buildings at Koonalda Homestead, just north of the old Eyre Highway, were built from excess sleepers brought to the region to be used in the construction of the Trans Continental railway.

Koonalda Station was South Australia's most western pastoral property for 50 years. In 1989, it became part of Nullarbor National Park and is now part of the National Estate Heritage Trust.

Earlier this year, the shearer's hut had two good water tanks and a new roof installed. The interior however was rundown and in need of restoration.

In September the building crew from the nearby community of Yalata and a team of Natural Resources Eyre Peninsula staff from Port Lincoln travelled to the Nullarbor with Ceduna

Snr Ranger Robbie Sleep to spend a week working on restoration of the Koonalda Hut.

Facing gale force winds and sideways rain the team's spirits couldn't be dampened, and they barrelled through the work on hand. So much so that they sent for extra materials to be brought up as they exceeded their expectations of how much work could be achieved.

Amongst other tasks they managed to remove and replace the damaged walls, ceilings, gutters, battens and skirtings in the sleeper hut and homestead; install structural strengthening timbers to sections of the ceilings; paint; repair the wood oven and clean up the rubbish that had accumulated around the hut in accordance with the heritage values of the area.

Michael Burgoyne of the Yalata building crew showed his talents as a cabinet maker adding a new wooden bench and table to the hut.

The team from Yalata and Natural Resources staff worked tirelessly together, with mutually respected levels of commitment and team spirit. The cooperative and highly positive experience by all involved has formed a strong basis for ongoing future partnership work.

During the week the team also completed some maintenance work on the Nullarbor cliff-top lookouts and around the Koonalda cave. They repaired some vandalised and damaged look-outs, re-defined the walking tracks, installed safety and interpretive signage and also installed a risk cage

Robbie Sleep and Anthony Kennedy help with unpacking materials delivered to the Shearer's quarters



Michael Burgoyne sizing up panels





Jeff Winkler (Yalata) Ethan Ware, Stevie Harrison jr and Anthony Kennedy preparing signage.

to Robert’s Well near the Nullarbor roadhouse.

Natural Resources Alinytjara Wilurara has such a small number of local staff to maintain the public assets on the Nullarbor (SA’s largest single block

of public land), so the additional local help from Yalata, as well as the support of staff from Port Lincoln is invaluable. Contracting maintenance work to Yalata community continues the cooperative relationship between Yalata’s enterprise arms and DEWNR which has been working well for the past 18 months.

Natural Resources AW’s Regional Manager Matt Ward said “I’m really impressed, not only by the work done on the buildings but by the way everyone worked together with such enthusiasm and as such laid the foundations for more such work to be undertaken.

The renovated quarters will be used as a remote work base significantly reducing travel time for work crews undertaking land management in the region.



Koonalda Shearer’s quarters before the clean up

Stevie Harrison – supervisor, taking a breather, note the walls made of railway sleepers



Michael Burgoyne measuring up the inside walls



Spinifex Country

EXHIBITION

5 October - 8 December 2013

Curator Heidi Pitman, with FUAM Director, Fiona Salmon

Thriving in poor soils, spinifex (*Triodia* sp.) is a tough, spiky, hummock grass that covers more than twenty percent of the Australian continent. While providing habitat for reptiles, birds and small mammals, it defines much of the country’s arid landscape. Traditionally spinifex has been an important resource for Aboriginal people – foremost as a source of resin and as a building material for windbreaks and shelters. It also has medicinal and combustive uses and many other innovative applications.

A collaborative project between Flinders University and the South Australian Museum, the exhibition draws on ethnographic material culture, historic photographs and contemporary works of art to explore the enduring significance of spinifex to Aboriginal Australia.

Spinifex Country is presented across two sites: Flinders University City Gallery and the South Australian Museum’s Australian Aboriginal Cultures Gallery (Temporary Space).

Photograph: Women from Ernabella, South Australia, collecting spinifex for shelter, wiltja, construction 1939–1940

Ward Collection Blue Album 019c
Courtesy of Strehlow Research Centre and Ara Irititja Archive (p57464)



Nullarbor crossings and bio-diversity risk:

Focus on the Spotted-thighed Bellfrog

Written by Harald Ehmann, photography by Harald Ehmann

The arid Nullarbor Plain is not a frog-friendly place. Only three or four burrow-inhabiting species (see pictures) are presently found in well-vegetated and sandy or granite habitats at the Plain's edges, and that is the way it is likely to stay. The concern for Natural Resources Management on the eastern side of the Nullarbor is how one species of frog may be establishing un-naturally in South Australia and potentially beyond. Human actions are providing the Spotted-thighed Bellfrog (*Litoria cycloryncha*) with huge leap-frogs from its homelands in south-western Western Australia, and this may have



Litoria cycloryncha (60mm in length). This resting Spotted-thighed Bellfrog is typically coloured and warty. Note the typical golden-brown colour of the upper eye. The tucked-in hands, arms and legs help to reduce water loss from the frog's moist skin. *Photographed in WA*

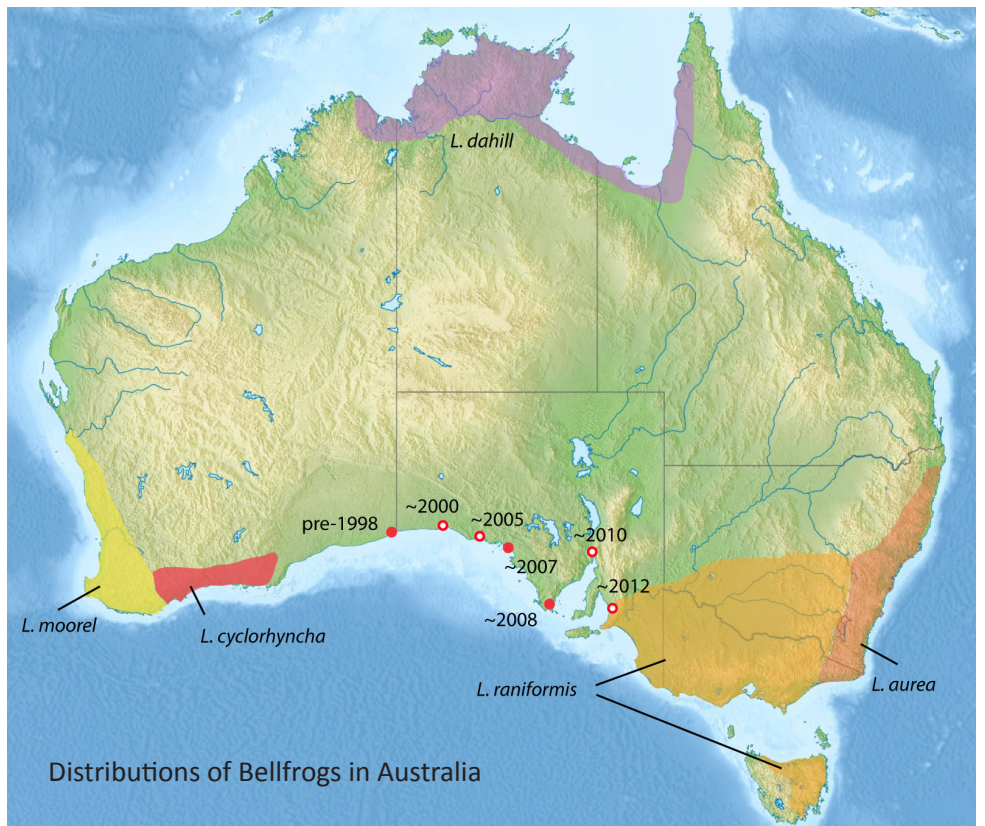


Litoria cycloryncha This about-to-hop Spotted-thighed Bellfrog is relatively plain and somber in colour and has a more warty skin than others. This image is close to what a chance torchlight encounter with one of these frogs might look like for most people in limestone situations.



Litoria cycloryncha in water: distance between outer edges of frog's eyes is 20mm.

This floating Spotted-thighed Bellfrog is typically coloured and only has its upper head out of the still pond water. Any animal of swallow-able size (up to 20 mm across and including another smaller frog or possibly even a tadpole) is jumped on and seized in the mouth if it ventures within range. *Photographed in WA.*



Distributions of Bellfrogs in Australia



Litoria cycloryncha venter

(frog length is 60mm)

This young adult Spotted-thighed Bellfrog is belly-up on an adult human hand and has typical underside colouring, including the characteristic spotted thighs. The human hand is not sufficiently wet: moistened and preferably cool hands are essential for frog wellbeing. Also essential is strong and steadfast discipline to keep the hands and fingers well away from the face, especially eyes, mouth and nose to prevent any exposure to irritating and potentially toxic frog skin secretions. These are released during the stresses of capture and handling. *Photographed at Coragina Rock WA.*

unintended and serious impacts for ecosystems, wildlife and humans further east.

The present distributions of the Spotted-thighed Bellfrog and other Bellfrogs are shown on the map, with the dots showing where the Spotted-thighed Bellfrog has been seen or found breeding beyond its natural range. The Spotted-thighed Bellfrog is similar in size and ecology to the Bellfrogs of South Australia and eastern Australia (*Litoria aurea*, and *L. raniformis*). The difficulty is that both these more eastern Bellfrog species are seriously threatened in their natural ranges, and the Spotted-thighed Bellfrog is a very successful coloniser that might out-compete its less-fortunate near relatives into extinction if it were to establish successfully in southern and eastern Australia. It is an unknown that could bite hard for Natural Resources Management.

The map shows the distribution of the Bellfrogs in Australia and particularly of the Spotted-thighed Bellfrog in WA, with un-natural occurrences at Eucla (pre-1998 in a pond built in the 1970's: many sightings), Nullarbor Roadhouse (~2000: single year sighting), Ceduna area (~2005: several individual sightings since), Streaky Bay area (~2007: many individual sightings

Limnodynastes dorsalis

(frog length is 60mm)

The Western Pobblebonk (*Limnodynastes dorsalis*) occurs in south western WA to the western edge of the Nullarbor Plain. It burrows backwards and downwards into loose leaf litter and soil in the deep shade of low bushes and trees where it can remain dormant throughout dry times. *Photographed 35 km East of Munglinup WA.*



since), Port Lincoln area (~2008: several individual sightings since), Port Augusta (~2010: single frog caught in a carpark), Adelaide Airport (2012: a single stow-away perhaps, caught at terminal). The white dots mean occurrences and red mean sites where breeding has or does occur. The dates indicate the earliest known or reported occurrence.

The Bellfrogs breed in still waters with swampy conditions (often created by recent disturbance), with the typical frog life stages involving eggs, free-living tadpoles and metamorphs that become juvenile frogs. The Spotted-thighed Bellfrog has many of the behavioural and ecological characteristics of some or all of its near relatives: a tolerance for strong sunlight (they all bask); it lives in aquatic situations near the ground that can be mildly polluted (and all of them can climb into trees); it eats other smaller frogs possibly including its own species; it can build up to very high densities in swampy situations; it has a tolerance of slightly to strongly saline waters in the tadpole and the adult stages; and has a capacity to move of its own accord, definitely for 3 to 5 km and probably for over 40 km. The eastern Bellfrogs have survived in captivity for over 10 years and it is therefore likely that individual Spotted-thighed Bellfrogs may live for several

Pseudophryne occidentalis

(bottom frog's length is 25mm)

Western Granite Frogs (*Pseudophryne occidentalis*) occur in south western WA to the western edge of the Nullarbor Plain where they live in close proximity to the widely-spaced granite outcrops. The fringing areas are well hydrated by rain runoff and they inhabit burrows that extend backwards and downwards into deeper granite soils that also support substantial shrubby shading growth. This pair is in breeding condition, with the larger female behind and the more brightly coloured male in front. They are typically very well camouflaged. *Photographed at Forrest Soak, Nanambinia Station WA.*

years in the wild, that is, they are relatively long-lived for a frog.

The Spotted-thighed Bellfrog (like all its relatives) is large and colourful, and therefore attractive to some people for translocating to garden ponds. And it is easily caught by interested and eager persons, including children. Because of its large size and tolerance for temperatures in the low 40's C it can also travel as a stow-away in transported items with accessible refuges. It is well-suited for making un-natural human-assisted migration possible, and it may already be established in at least three habitat "stepping stones" beyond its natural range. The potential spread of the Spotted-thighed Bellfrog already spans the NRM Regions of Alinytjara Wilurara, Eyre Peninsula and the SA Arid Lands, and the assessment and management of the risk potential may need a joint approach. The map graphically shows how close the species could be to getting into the Northern and Yorke and Murray Darling Basin Regions and beyond.

Its skin secretions are known to cause strong toxic reactions in humans, so un-informed handling of this frog can be hazardous, especially for children.

For now the main concerns and the management options are preparatory,



Neobatrachus sp (right side frog's length is 35mm.)

About three species of burrowing frogs of the genus *Neobatrachus* occur around and onto the outer edges of the Nullarbor Plain. They burrow backwards and downwards into deep sandy soil in low lying areas usually within hopping distance of the temporary pools they breed in. This mating pair (male on right) was one of dozens that spawned on the one night following heavy flooding rains during the previous day. Note the male's black hard digging tubercles on the back edge of each foot. In its back-filled shaft (up to 1.2 m deep) the frog can remain dormant for several years within a moisture-retaining cocoon made up of several moltings of skin. *Neobatrachus* frogs are the only frogs that occur naturally on the Nullarbor Plain, but they are known from only a few sites on the Plain where there are deeper soils. *Photographed 12km North of Whyalla SA.*

and include:

How quickly and how successfully is the species spreading? Monitoring at and near key sites across the South Australia by informed communities (assisted by expert advice) can be developed.

To what extent is human agency involved and how can this be reduced or avoided? Informing persons most likely to encounter and unintentionally translocate frogs, as well as more general public awareness information would help reduce the risks.

Are there ecological risks and possible negative consequences and what might they be? A better understanding of the potential competition with existing local species (including the eastern Bellfrogs), and predation on local smaller species including several that are already threatened is needed, as well as potential wider impacts on aquatic ecosystems.

Could there be any ecosystem benefits and what might those be? To answer this needs some careful study and consideration backed by good science.



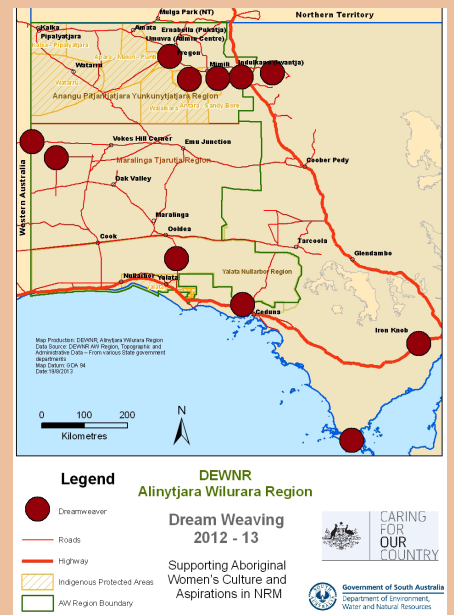
Litoria cycloryncha

These seven Spotted-thighed Bellfrogs are waiting for insects to be attracted within capture range to the very pale rock at the water's edge. Such densities are common in many of the places they occur. *Photographed in WA.*

To do nothing defies good sense; doing what is feasible to stop the spread of this species makes better sense. Perhaps the initial step could be for the involved and potentially affected NRM Regions to participate in a guidance process based on the above concerns and options with a view to if necessary developing and implementing a control strategy to prevent the un-natural spread of this species.



Senior girls from Indulkana school cleaning dirt and debris from around the rockhole.



Barngarla women and children covering four generations came together to talk about the land



Dreamweaver:

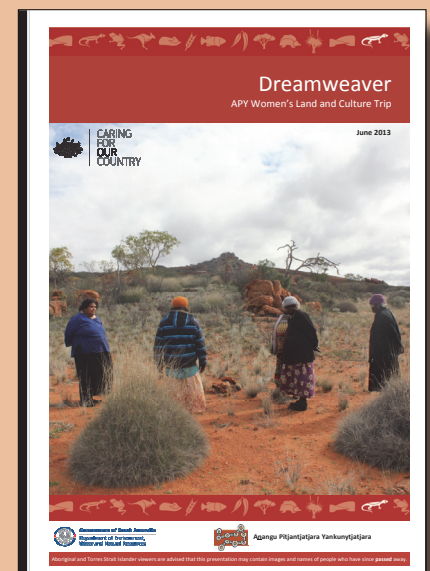
Supporting Women's Participation in Natural Resource Management

Dreamweaver: Supporting Women's Participation in Natural Resource Management Project was developed from the ideas shared in a *Women in NRM* Conference held in Port Augusta in 2010. The project was aimed at acknowledging, supporting and implementing activities that support best practice land management outcomes using the knowledge and experience of Anangu women, particularly Elders, in maintaining high levels of biodiversity on country.

This project has given women the opportunity to work independently, in a field commonly dominated by men in Anangu communities. According to the latest available Working on Country Annual Report (2009/10), only one in eight rangers employed in that year (13%) were women.

The women who worked on the Dreamweaver projects were in the main, chosen by Senior Anangu Traditional Owners who determined which women were most appropriate to work on the various rockhole sites.

This project covers sites across the Department of Environment, Water and Natural Resources' (DEWNR) Alinytjara Wilurara (AW), SA Arid Lands (SAAL) and Eyre Peninsula (EP). The work focuses on assessment and management of 16 women's cultural water sites across all three regions – 12 of the 16 sites are located within the Natural Resources AW region.



APY Women's lands and culture trip Report

APY Women's lands and culture trip



Dreamweaver Report

Project Evaluation and Future planning



Aboriginal and Torres Strait Islander viewers are advised that this presentation may contain images and names of people who have since passed away.

Winning Outcomes

The combined projects have produced the following outcomes:

- The project has been successful in attracting a further 4 years funding to build on the projects commenced in the APY Lands.
- The development of substantial and strong networks of Aboriginal women working on land management projects on country.
- The strengthening of links between women in community and Regional Women's organization, such as SA Office for Women and Nyangatjatjara Pitjantjatjara Yankunytjara Womens Council.
- 16 Rockholes across the state visited and protected, many of which are in the most remote parts of SA.
- Over 100 Aboriginal women working on country.
- Significant paid employment for Aboriginal women across the project sites.
- Passing on of cross-generational cultural knowledge.



Working together on Country

Women and youth from Yalata, Oak Valley and Tjuntjuntjara

Tjintirrkara Rockhole

Tjintirrkara rockhole is situated in Western Australia, close to the Mamungari Conservation Park. The rockhole is seasonally filled with rain and is an important water source for animals in the area. It is also an important women's place of Tjurkurpa (Dreaming stories).

The Dreamweaver Tjintirrkara Rockhole trip was developed from discussions held during the Mamungari Women's Gathering 'Minyma Tjuta Tjunguringanyi' back in September 2012, in which a convoy of 51 women travelled for thousands of kilometres to important women's sites in Mamungari Conservation Park. During the course of this trip, the women visited Tjintirrkara rockhole and decided that a further women's trip would be carried out where women from Yalata, Oak Valley and Tjuntjuntjara could come together and work in partnership to clean the rockhole, pass on the stories of the site, and create a future work plan for the area.

Mima Smart, Yalata Council Chairperson and AW Board Member



Elaine Cox and Rita Bryant showing Alise Koko how to cook Maku (witchetty grubs)

said "We went to check on the health of an important rockhole – Tjintirrkara. The rockhole needed cleaning out and we noticed a lot of camel and rabbit activity around. We would like to keep camels away from this rockhole. There are other important women's sites where camel control is needed, and if we had a female helicopter pilot, we could show them from the air. We made a plan for youth and elders of Yalata, Oak Valley and Tjuntjuntjara to meet here in autumn next year and clean out the rockhole together. This could be the first land management

project for women to work together from Pila Nguru and Maralinga Tjarutja lands."

Tjintirrkara was also considered a good site to introduce young women to land management practices through cleaning the site and monitoring the flora and fauna in the area. "We talked about camels, the danger they were on the road and the damage they do to rockholes. We talked about women's sacred sites that need to be looked after around Mamungari and the need for a women's ranger program so that women from Yalata, Oak Valley and Tjuntjuntjara could be working on their country together" said Ms Smart.

In late June 2013, 38 women from Yalata, Oak Valley and Tjuntjuntjara communities came together again to make the 5 day journey out to the rockhole, to meet, pass on stories and care for the country at this important site.

The trip was planned, organised and led by the Tjuntjuntjara women. They did pre-trip site visits and assessments, ordered and transported all the food,



Alise Koko snacking on a freshly cooked witchetty grub



Janice Stevens and Wanda Hansen from Tjuntjuntjara Community



Pam Diment from the Ceduna Arts & Culture Centre gave added support to the Anangu ladies

carried all the arts and camping gear and set up the camp for all the women. For a location as remote as Tjintirrara, this is no small feat! They also decided on the objectives for the trip, they were to:

- provide an opportunity for the older women to pass on knowledge and stories to younger women
- assess the health of the sacred sites and plan for future management
- strengthen the role of women in land management programs
- provide employment and training opportunities for women in land management.

Although the women had planned to remove the dirt and debris from the rockhole, the recent heavy rains had filled the rockhole to overflowing, making cleaning both undesirable (we wanted to leave the water for the animals) and impractical. The younger women conducted a site assessment which showed that feral animal tracks and scats were present, primarily rabbits and camels. Signs of lizards, birds and snakes, were also present, showing that Tjintirrara is an important water source for the native animals and as such needs to be protected from large feral herbivores that both drink and foul the water.

In the future, the Dreamweaver women would like to continue to share knowledge with their daughters and granddaughters about the area. They want to pass on stories and cultural practices so that their descendants can continue to pass them onto their own daughters and granddaughters.

Eventually being able to clean out



Bones litter the water hole before being cleaned

the rockhole and restore it, is a goal shared by all women from as far away as Yalata and Oak Valley to those closer in Tjuntjuntjara. This will be a large undertaking which will require a high level of planning, with work carried out over several trips. The women have expressed the desire to have a fence or cover erected around/over the rockhole to protect it from large feral herbivores such as camels and donkeys, but still allow smaller native animals to access the water.

The work being carried out through

Dreamweaver is ecologically and culturally important. Rockholes in the area are important sources of water for native animals, but are often fouled through use by feral animals and encroachment by invasive weeds. Dreamweaver supports women to maintain their sacred cultural sites, connect with country, gain employment, training and expertise in land management and transfer knowledge between generations of Anangu women.

Anangu women from the Tjuntjuntjara Community have been essential in leading and implementing the project from problem identification, to planning and on-ground implementation. This was coordinated via Dreamweaver through Natural Resources AW to Pila Nguru (governing body of Tjuntjuntjara and surrounding Spinifex lands) to lead and implement the work. Thank you also for the support from Yalata Inc. and Pam Diment for assisting the Yalata and Oak Valley women to reach the remote site.

From left to right: Caroline Peters, Elaine Cox, Rita Bryant, Cindy Watson (back row) Theresa Peters, Joseph Peters, Geraldine York, Maxine Koko (back row), Nicole Koko, Janie Cox (back row) Kamisha Cox, Alise Koko. Absent: Marcia Alsop





Buffel on the line

Natural Resources EP and AW join forces to fight Buffel Grass on the Trans-Australian railway line

Buffel Grass is considered to be one of the greatest risks to biodiversity in the AW region. If left uncontrolled, this invasive grass could also be a major threat to the native flora and fauna of the EP region. Staff from both regions are working together to keep this threat at bay, and this is especially evident from work coming out of the Ceduna Natural Resource Centre.

In August this year EP Senior Ranger Robbie Sleep, EP Authorized Officer Andrew Sleep and two local contractors lent a (gloved) hand to AW Project Officers Paul Gregory and Nathan Williams to fight the Buffel Grass infestation along the trans-Australian railway line.

As it passes through the AW region, the railway line cuts through the remote and largely untouched landscapes of the Yellabinna Regional Reserve and Maralinga Tjarutja Lands. The railway line passes through diverse and unique habitats, including Beaked Red Mallee and Yorrel woodlands, Mulga shrublands and sprawling red sand dunes of Spinifex Grasses that hide Sandhill Dunnarts and Malleefowl mounds.

The Buffel grass infestation along the railway line is thought to be carried by the train from the east, and gradually lessens its hold towards the west.

Thankfully, due to years of monitoring and control, the infestation has remained relatively contained to the line. However, during the last few wet winters, the grass has taken up the opportunity cast its seed further afield and is sprouting up off the railway line, attempting to establish in the corridors between the line and access road, as

Buffel Grass at sunset on the Trans- Australian railway line (photo courtesy of Ollanta Lipcer)



Photograph above: Spraying Buffel Grass along the Trans-Australian railway line (photo courtesy of Ollanta Lipcer)

well as some small patches along the road.

An earlier reconnaissance trip revealed that the plant was in flower and action needed to be taken immediately in order to control the existing plants and their future spread. AW and EP quickly assembled a local team and gathered the immense amount of resources needed to spray weeds in such a remote location, including 2 quad bikes, 4 vehicles and hundreds of litres of water. Together they travelled over 300kms to reach the train line, then worked from Malbooma siding (east) to Ooldea (west) covering 230kms of railway line, spraying slowly along the line.

The trip lasted 6 days and required an impressive effort in last minute planning, logistics, and a fair chunk of teamwork. Only a follow up trip will reveal how effective the spraying was to control the spread of Buffel Grass; however the immediate success of this cross-regional effort was to further galvanize the strong cross-regional working relationships through the AW/ EP Ceduna Natural Resources Centre.



Who lives in the Great Victoria Desert?

Alinytjara Wilurara/Eyre Peninsula Natural Resources Centre



The Great Victoria Desert (GVD), encompasses some 42 million hectares of outback South Australia and Western Australia and is home to some of Australia's most unique and interesting wildlife.

Maralinga Tjarutja Lands, some of the Woomera Prohibited Area and Mamungari, Tallaringa, Yumberra, Yellabinna and Pureba Parks are included in the South Australian section of this vast remote Desert.

The Friends of the Great Victoria Desert (FoGVD) are a group of highly knowledgeable volunteers who are committed to the environmental interests of this remote desert region. Members of the group have been surveying the plants and animals of the GVD since their formation in 1994 and have a detailed understanding of the challenges faced in maintaining its natural biodiversity; in 2006 publishing the regional field guide *Shrubs and Trees of the Great Victoria Desert*.

Friends of the Great Victoria Desert experts Elizabeth Lloyd talked about birds, Jan Forrest presented on invertebrates and Ralph Ohlmeyer discussed the nesting patterns and behaviours of the region's Malleefowl.



Malleefowl searching for nesting materials

On Friday, 13 September key members of the Group hosted an open invitation evening at the Alinytjara Wilurara's/ Eyre Peninsula's Natural Resource Centre in Ceduna to talk about the region and make a number of presentations. Elizabeth Lloyd talked about birds with particular focus on sightings made during her most recent trip. Jan Forrest, who was the Senior Collection Manager in Terrestrial Invertebrates at the SA Museum when she retired, spoke about the Desert's invertebrates including various techniques for collecting specimens.

Ralph Ohlmeyer discussed the nesting patterns and behaviours of the region's Malleefowl.

The evening was a great success with over 40 people attending including many local enthusiasts and farmers, who went on to take members of the FoGVD on tours of the region the following day.

The information evening came about through the interest shown by Ceduna locals who were keen to hear more about the various creatures and natural wonders of the remote regions surrounding their community.

The Ceduna NRC regularly hosts community events that provide opportunities for local people to inform and be part of the direction of Natural Resource Management work. The support of volunteers is critical to work being undertaken in the region's local community, bringing them in to the projects and work happening in

FoGVD being shown animal tracks by Lyndon Pepper





Benefits of feral camel management in the Nullarbor region:

Nullarbor National Park and Yalata Indigenous Lands

At the head of the Great Australian Bight, the Yalata Aboriginal Reserve, Nullarbor National Park and Nullarbor Regional Reserve combine to provide the largest expanse of remnant mallee vegetation in South Australia, with a total combined area of over 3 million hectares. The area extends from the Western Australia border to Fowlers Bay on the Eyre Peninsula of South Australia.

The area has developed a unique environment as the semi-arid landscape of the Nullarbor drops off 80 metre high cliffs to the Southern Ocean. The specialised habitat this creates supports a diverse mixture of native animals and plants, including an important seed bank.

Aboriginal communities used the area extensively in the past and culturally-significant sites can be

found throughout the entire area. Communities remain on the Yalata Aboriginal Reserve and the Maralinga Tjarutja Lands.

Impacts of feral camels

The Alinytjara Wilurara Natural Resources Management (AW NRM) Board has been monitoring the environment in this area together with other stakeholders, including the South Australian Department for Environment, Water and Natural Resources and the Yalata community. The monitoring undertaken indicated that large herds of feral camels were having a significant impact on this special environment, damaging vegetation and waterholes.

On the Nullarbor Plains and Yalata Aboriginal Reserve, feral camels have caused significant environmental damage as they congregate in mobs

of up to 150 animals. They foul and destroy waterholes, damage native vegetation by trampling and grazing, cause erosion in fragile coastal dune areas and destroy culturally significant sites. Areas of native vegetation regenerating from fires were significantly impacted by feral camels attracted to a flush of growth after rain in the area.

Satellite tracking of feral camels has shown that they are highly mobile and move vast distances in response to seasonal conditions. This movement causes additional problems in the Nullarbor region as the animals move across the Eyre Highway, creating dangerous situations for motorists. This is the main highway between South Australia and Western Australia and acts as a transport corridor as well as a tourist route. On the section of road between the Western Australian

Feral camel wearing a satellite tracking collar

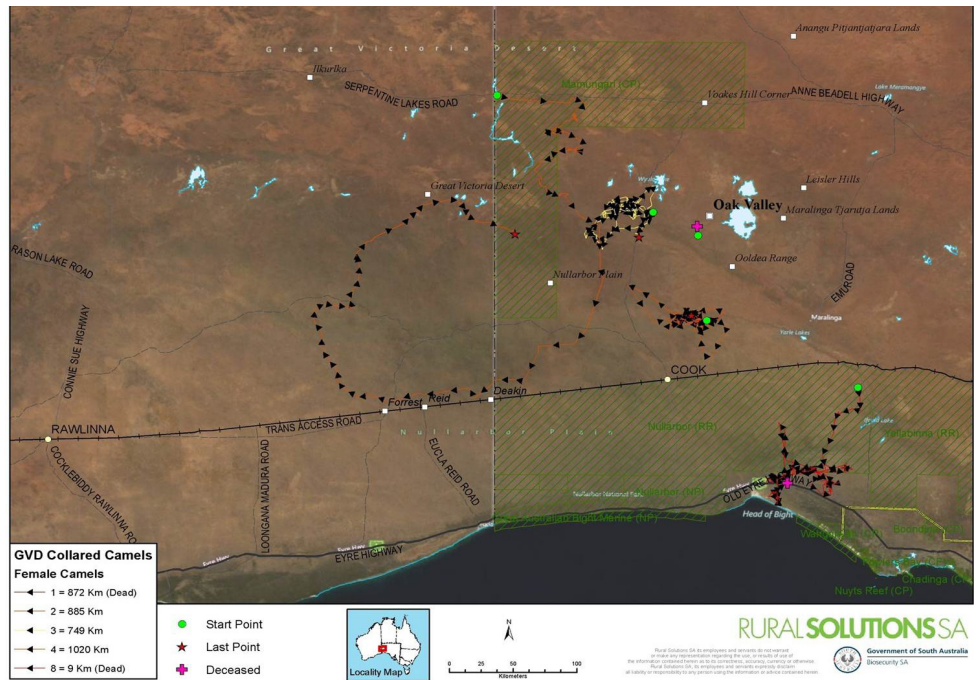


Traditional Owner Bruce Hogan assisting with aerial tracking



Border and Nundroo, there were two recent collisions with feral camels and a number of reports of near misses.

As the number of feral camels in the area increased and moved further in search of food and water, reports of feral camels breaching the Dog Fence and entering pastoral properties were received. The Dog Fence is a pest exclusion fence that was built to protect the sheep flocks in areas of South Australia from wild dogs. As a result of the damage to the Dog Fence, increased numbers of wild dogs were believed to have been entering pastoral properties in the area, threatening sheep flocks.



Map showing tracking data for collared camels in the Great Victoria Desert

Management options

With the number of feral camels in the Nullarbor region having a significant impact on the environment, the protection of culturally-significant sites, pastoralist livelihoods and the safety of motorists, the South Australian partners of the Australian Feral Camel Management Project (AFCMP) agreed that the numbers of feral camels in the region needed to be quickly reduced.

While mustering feral camels for commercial use is a viable option in some areas of the state, in this case the need to act quickly, difficult accessibility, as well as the poor condition of many of the animals determined that aerial culling was the best and most humane method of control.

Partnerships

The aerial cull was organised by Biosecurity SA in consultation with AFCMP personnel. The cull was coordinated with key stakeholders including pastoralists, Yalata Community Land Management Team, SA Police, SA Department for Planning, Transport and Infrastructure, SA Dog Fence Board, Department of Environment, Water and Natural

Resources, Alinytjara Wilurara NRM Board and SA Arid Lands NRM Board.

Aerial culling was carried out by accredited marksmen in accordance with agreed State and National operating procedures. The use of helicopters with experienced mustering pilots ensures that marksmen are within appropriate range of the target and at the best angle. Animals can also be herded short distances if required.

A risk management plan was developed to ensure the public could continue to use the Eyre Highway, with a 500 metre buffer surrounding any road or track and public access areas.

Animals were only culled where it was safe to do so. As a result of the project 1170 feral camels were removed.

Milton Kugena (left) and Nathan Ginger know this area of the Nullarbor well and assisted in the smooth running of the program





Warru Recovery Team Annual Report released

A team effort to conserve endangered wallabies

Mann Ranges survey May 2013 Martin Campbell



Warru Ranger Jacob McKenzie releasing an adult warru during July 2013 trapping (photo: Daniel Clarke, APY LM)

One of South Australia's most endangered mammals, the black-footed rock-wallaby, is being protected under a successful partnership between governments, researchers, and Traditional Owners.

Sustainability, Environment and conservation Minister Ian Hunter MLC says the effectiveness and achievements of the Warru Recovery Team to boost South Australia's populations of black-footed rock-wallaby is inspirational.

"The black-footed rock wallaby – or Warru as it's known by the Traditional Owners of the Anangu Pitjantjatjara Yankunytjatjara (APY) Lands – has a rich history in the region," he says.

"The Warru Recovery Team was launched in 2007, and is a partnership between the APY people, the Department of Environment, Water and Natural Resources (DEWNR), the Alinytjara Wilurara NRM Board, the Australian Government, and Zoos SA.

"Researchers from the University of Adelaide and Ecological Horizons Pty Ltd have also been involved in the program.

"The team's activities have included predator control, surveys to find

colonies, an ongoing trapping program, and maintaining ongoing captive breeding populations.

Anangu Senior Dora Haggie is among those celebrating the team's work, saying that when she was young the species was in abundance.

"We don't want to eat them anymore because we looking after ... we're working for rock-wallaby, looking after. Some fox might come and eat him, that's why we're looking after," she says.

DEWNR Senior Ecologist Peter Copley says the recently-released Warru Recovery Team Annual Report is an excellent example of how the progress of a wide range of activities related to the conservation and recovery of a threatened species can be reported.

"While the report is written primarily for the recovery team partners and the various funding agencies, it is also a significant example of how a multi-stakeholder recovery project runs,

and is accountable for its activities in implementing a complex recovery plan," he said.

"The annual report also contains important information about the environmental conditions and responses of Warru during the year 2012. For example, using satellite imagery, it documents the extent of the large fires that burnt around and through Warru habitat during the year."

In 2012, the Warru Recovery Team continued to manage the captive and wild population with trappings in 2013 revealing a high proportion of breeding females and a number of previously unrecorded individuals.

Mann Ranges survey May 2013 Eric Abbott



Mann Ranges survey May 2013 Warru rangers APY, CLC and commercial helicopter staff





Feral cats tend to be shy and elusive. They seldom walk along roads like dingoes and foxes do and are generally only seen briefly when their bright eyes reflect in a spotlight. Until now it has been very difficult to work out how many cats are around and then how to control them. However, new technology has enabled us to monitor the number of cats out in the desert/bush/AW region and may eventually allow us to reduce their threat.

Rangers from Oak Valley, assisted by John Read and Nathan Williams (NR AW Project Officer), set up 18 motion activated cameras around the area where the nationally endangered Sandhill Dunnart has been found at Immarna, south east of Ooldea. The rangers and scientists were trying to work out which lures were most successful for attracting cats. We tried using recordings of cat calls, flashing lights, valerian oil and the anal gland of cats (definitely the least favourite lure to put out). In six months cats were observed on these cameras 49 times, with at least 6, and probably many more different individual cats living in the 18 square kilometre survey area.



Beware Feral Felines...

you're being watched

Written by John Read

Foxes were rare at the start of the study but increased dramatically after June to be photographed regularly at most cameras. One of the more surprising animals photographed was a malleefowl and the rangers also captured many photographs of other birds, lizards, camels and dingoes.

Understanding where cats and foxes live and how best to attract them will help to control these feral predators that are thought to threaten many of our native birds, mammals and reptiles. The long-term aim of the study is to lure cats to a new device



Feral cats caught by motion sensor cameras set up in the west mallee region (2013).

Left: night image of cat with native bird kill

Right: Feral cat at watering hole

that sprays toxic paste onto their fur for them to lick off. This is thought to be a far more humane and target-specific technique to control cats than use of poison baits or trapping. Watch this space for updates on the cat trial and the development of the new 'grooming traps'

A curious dingo checking out the camera and sensor boxes (2013)



The perfect night predators, feral cats clearly fairing a lot better than the skinny dingo photographed above

Ocelot cat caught on camera by the motion sensors





Changes to AW's Water Plan

APPROVED

Written by Paul Dalby (NR AW Water Consultant)

The Minister for Sustainability, Environment and Conservation recently approved an amendment to the NRM Plan for the Alinytjara Wilurara (AW) region which will mean that for the first time in this region, permits for water affecting activities will be required.

Water in the region is scarce and precious. In consultation meetings with Aboriginal people across the AW, water resources were consistently identified as a high priority. There was a strong interest by Aboriginal people in seeing water used wisely and carefully for the benefit of Aboriginal people in the region. There were some concerns related to the ongoing sustainability of water supplies for human consumption, the potential impact of major development on water supplies and a desire to maintain full control over surface water which in this region has high cultural and spiritual values.



Paul Dalby and AW NRM Board's Presiding member Parry Agius talking on radio about the plan.

The AW NRM Board developed a Water Policy in 2012 that reflected the aspirations and values of the regional Aboriginal community. The principles identified in this policy were important in helping to guide the drafting of the NRM Plan:

- Acknowledge: Water policy should take into account the strong connection and knowledge of Aboriginal people to water
- Informed consent: Aboriginal

people on the lands understand the implications of water policies and agree to them

- Participation: There is broad participation by Aboriginal people in making decisions about how water should be managed
- Culture: Water policy supports traditional and contemporary Aboriginal cultural values and needs

Over a period of nine months, the NRM Plan was drafted jointly by Natural Resources AW staff and the water policy and planning areas of the Department. Consultations were held with the Aboriginal Land Holding Authorities, DMITRE, SAAL NRM Board and SA Water to review the wording of the draft Plan. A final draft was endorsed by the AW NRM Board, which has representation from each of the Aboriginal Land Holding Authorities in the region, and is the only such Board in Australia that has 100% membership by Aboriginal people.

The key objectives of this Plan are that:

- water sources that support important cultural features and activities in the landscape are protected
- water supplies for townships and homelands are protected
- an equitable balance is achieved between environmental, social and economic needs for water
- the rate of the taking and use of the water is sustainable (or acceptable in the case of non-recharged aquifers)
- water quality is protected
- there is no loss of rights for existing users
- water is shared fairly between users.

Regional staff are now engaged in a

process of communicating the Plan to all the communities and stakeholders in the AW NRM Region. They are working with staff from across DEWNR, DMITRE, SA Water, EPA and SAAL NRM region to create and implement the permit approvals and processing. The Board have directed staff to use existing processes wherever possible in the implementation of the Plan. For example, approval processes used by DMITRE for water affecting activities relating to mining and petroleum exploration have been endorsed by the Board, and a separate approval process by the Board will not be required. The Board would prefer to make use of existing processes for issuing permits, and regional staff are negotiating with the SAAL NRM region to determine if it would be appropriate to make use of their processes for issuing permits. The Board will also work with Aboriginal Land Holding Authorities to try and ensure that cultural approval for any works need only be sought once.

The Board believe that this is the first regional water plan in Australia that has been driven by and endorsed by Aboriginal people. The NRM Act underpins this new law that ensures that water will be used wisely in this region, and gives Aboriginal people a strong voice in how water is used.

Nullarbor underground lake: Koonalda Cave



Googs Lake Restoration

Even more Beautiful

On 9 Sept 2013 AW's Paul Gregory along with 5 of the Port Lincoln works crew completed Round 3 in the Googs Lake Restoration Project on an eight day run at Googs Lake.

A total of 240 posts were put in the ground; completing the definition of the three main designated camp areas and the lookout, as well as the closing off of revegetation areas along the lake. Campground names include Callitris, Casuarina and Triodia.

The team also installed a picnic table, which was a request put forward by the community, who also voted on the style, colour and position of the table.

Project and directional signs were installed along the roads and in camping areas to inform visitors of the project's aim, as well as new and updated track information signs which were installed at the entrances to the park. As fire season is fast approaching us, Fire signs were also installed reminding visitors gas fires are only to be used through the period 1 Nov – 15 April. Other safety signage was installed such as notifying remote travellers which UHF channel to be on whilst driving in the region.

In early October, we will be heading out to Googs Lake with volunteers from the local community to review the restoration project and look at what steps we take next to ensure the area is promoted and protected into the future. We will also be setting up photo points so that we can track the success of the revegetation and regeneration, and keep the community informed of the results of their hard work and collaboration.



A "Whale of a Day"

Written by Yasmin Wolf with photography by Paul Gregory

On the 1st of October 2013, staff from Natural Resources Alinytjara Wilurara and Eyre Peninsula, and the Yalata Community held a "Whale of a Day" at the Head of Bight Whale Centre. The day was centred around raising awareness and stewardship for southern right whales that migrate to Head of Bight annually to breed.

Typical October weather leading up to the event nearly resulted in the event being cancelled, as 80 kilometre winds lashed the coast and cliffs. With severe weather warnings for strong winds prompted staff to prepare contingency plans. However, upon arrival at Head of Bight, the clouds parted and wind died down rewarding those who attended with a warm, balmy fun filled day.

Forty adults and children from communities across the West Coast came together at Head of Bight for a BBQ lunch supplied by Natural Resources AW, before activities commenced. Adults were treated to an art demonstration and workshop by Ananguku Arts, (a South Australian aboriginal owned and governed peak body for the arts). David Miller (Chairperson, Ananguku Arts), Tony Collins (Program Manager, Ananguku Arts) and Iain Morton (Statewide Programs Manager, Ananguku Arts) as well as Wayne Eager, an artist from the Anangu Pitjantjatjara Yankunytjatjara Lands, gave adults the opportunity to create paintings (that may be sold at the Oysterfest festival coming up that weekend). The workshop was very well received, especially by the ladies of Yalata, with some beautiful artwork created on the day.

While the adults were busy painting, the children were treated to a range of

activities focused on increasing their knowledge of southern right whales and how human activities impact on the iconic species. The children were shown identification methods used by scientists in the field. Activities included "whale snap" - matching two identical pictures of whales using their callosities (roughened patches of skin on the whales head), "pin the tail on the whale" - finding pieces of a whale and dingo and attaching the different parts to make 1 complete land based and 1 marine based species as well as an activity that required them to measure a whale.



Children playing whale snap

Individual prizes (freddo frogs), were given to the children as well as the main prize sponsored by Natural Resources Alinytjara Wilurara - a recycling 'slam dunk' cage for cans and bottles. The recycling cage reinforces to the children the benefits of recycling - all money raised from recycling will be put towards a new pool table for the Yalata Youth Hub.

It was great to have such a large attendance considering the weather predicted. With this inaugural event proving to and due to the project being so successful, it is hoped that this community day focussing on raising awareness and stewardship for southern right whales can be built into an annual information and activity day in the future.

Yellabinna plan balances conservation, culture, and mining

Photographs courtesy of Paul Gregory (NR AW Project Officer)

A new management plan will help guide the future of the largest intact area of mallee woodland in Australia.

The Yellabinna Reserves Management Plan covers more than three million hectares of land north of Ceduna, and takes in the Yellabinna Wilderness Protection Area, Yellabinna Regional Reserve, Pureba Conservation Park, Yumbarra Conservation Park, and Boondina Conservation Park.

The Department of Environment, Water and Natural Resources' Deputy Chief Executive Tim Goodes said, "the plan set landscape-scale objectives and strategies to care for the area, balancing biodiversity and cultural conservation with other uses such as mining and ecotourism".

"These reserves are extremely important to local Aboriginal communities, as they protect numerous significant cultural sites," Mr Goodes said.

"They also protect an internationally-significant wilderness and are vital to the conservation of biodiversity in the area, which is home to one of the world's most diverse groups of arid-land reptiles.

"The reserves feature seven distinct habitats, each with its own special native flora and fauna. Some of the species are endangered, including the sandhill dunnart and marsupial mole, vulnerable birds such as the malleefowl, and significant plants such as the Ooldea guinea-flower and club spear grass.

"It is a beautiful, unique country featuring rock pools, open woodland, red soil, and wide skies that make it popular with travellers."

The Yellabinna region also contains mineral resources that are important to the state's economic development.

Mining and mineral exploration is not allowed in the Yellabinna Wilderness Protection Area, but may be permitted elsewhere in these reserves subject to strict conditions to ensure the protection of natural and cultural values.

The Iluka Jacinth-Ambrosia Resources mineral sands mine is a significant operation in Yellabinna Regional Reserve.

Iluka Resources works in partnership with government to ensure these operations complement the objectives for the park.

Some of the features of the management plan include protecting



and promoting Aboriginal cultural values, identifying and protecting significant sites, controlling pest animals and plants to promote biodiversity, enabling appropriate and sustainable mining and mineral exploration, and encouraging sustainable wilderness tourism.



A Big Welcome to our new AW NRM Board Members

The fabulous work already being undertaken by our Board is in the process of gaining even wider representation from the communities of the AW with the recent addition of Michael (Mick) Haynes and Gary Lewis.

Mick Haynes

Mr Haynes is a descendant of Kokatha and Mirning tribes and lives in Ceduna. He has a solid history of governance roles including Acting Deputy State Manager and Ceduna

Regional Manager of the Aboriginal and Torres Strait Islander Commission between 1986 and 1997. Mr Haynes is currently the CEO of Ceduna Aboriginal Corporation where he reports to an all Aboriginal Board.

Gary Lewis

Mr Lewis lives in the Anangu Pitjantjatjara Yankunytjatjara (APY) Lands. He has a certificate in Conservation and Land Management and a Diploma in Community Administration. He also has strong skills in soil conservation, land management and biodiversity management. Mr Lewis has previous board experience which includes Chair of the Pukatja Community Council, Board Member of Regional Anangu Services and Executive Member of APY Executive Council.



Back left: Parry Agius (Presiding member), Mick Haynes, Brian Queama, Sydney Chamberlain
Seated from left: Gary Lewis, Rose Lester, Mima Smart

Tips for Distance Drivers

The Alinytjara Wilurara (AW) region covers nearly a third of South Australia with long distances between locations where help may be at hand. To help keep the people of the region safe here are some tips that might prove useful.

Batteries

So, do you know how to start your 4x4 from the second battery? If you don't, make it a priority to find out.

What kills batteries?

Heat, cold, vibration, dirt and dust and being run flat, all contribute to killing or shortening the life of your vehicles battery. In the AW all of these factors come into play every day! This puts massive strain on the 4x4 batteries. Below are a few tips to ensure the best from your battery.

- Check everything is turned off and unplugged when you store the car.
- Keep the battery clean. Dust and dirt, mixes with acid splashed out on corrugated roads and lays on top of the battery. Not only does this corrode fittings under the bonnet but it also forms a conductive medium for electricity to flow between the battery terminals. This flow can be as high as 12 volts (the top voltage output of the battery) and can flatten a battery within a day or two. An occasional rinse with water is all that is required.
- Ensure battery is secure: As well as rattling round and damaging the interior components of the battery a loose battery under your hood can splash acid around and

even start a fire.

- Ensure the battery is regularly checked by a mechanic.
- CAUTION: Batteries contain acid and large amounts of electricity. Treat them as a potential bomb.
- Keep away from flames and sparks
 - Do not put metallic objects across the terminals
 - Don't heat them up
 - Only connect them to another battery or vehicle (jump starting) after checking your owner's manual.

Courtesy of David Oag and Peter Newman, Bush and Bitumen, DEWNR SAAL Region

Parry Agius
Presiding Member



AW NRM Board members

Serving the

PEOPLE, COUNTRY, WATER
of the Alinytjara Wilurara

Rose Lester
Board Member, APY



Mima Smart
Board Member, Yalata



Gary Lewis
Board Member, APY Lands



Sydney Chamberlain
Board Member, Far West



Brian Queama
Board Member, Maralinga Tjarutja



Mick Haynes
Board Member, West Coast



Janet Queama
Board Member, Oak Valley



Adelaide Office

Waite Campus, CSIRO Building
Gate 4 Waite Road
URRBRAE

GPO Box 1047, ADELAIDE 5001
Tel: 8303 9667

Natural Resources Centre

50B McKenzie Street
CEDUNA

PO Box 569, CEDUNA 5690
Tel: 8625 3706

