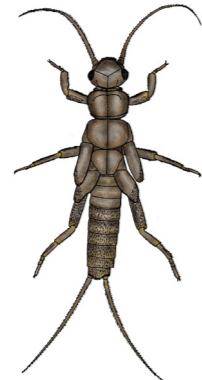


Aquatic Macroinvertebrate ID Key

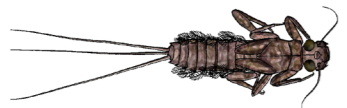
Legs, tails or feelers



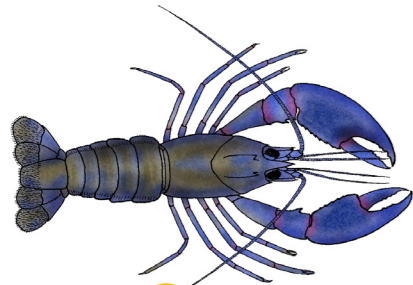
caddisfly larva (8)



stonefly larva (10)



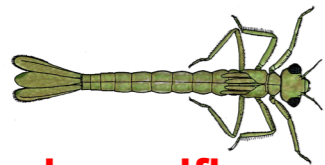
mayfly larva (9)



yabbie (4)



dragonfly larva (3)

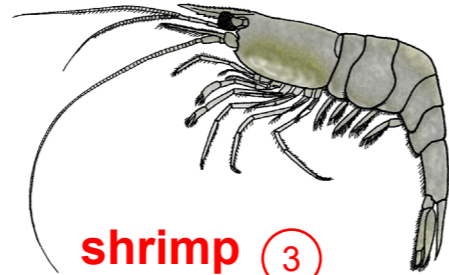


damselfly larva (3)

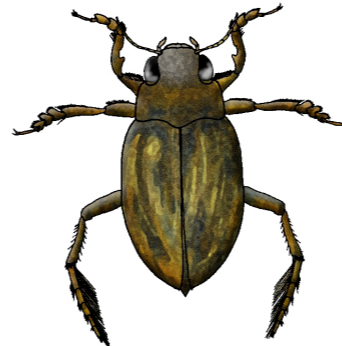
Pollution Sensitivity*:

- (NR) Not rated
- (10)–(8) Very sensitive
- (7)–(6) Sensitive
- (5)–(4) Tolerant
- (3)–(1) Very tolerant

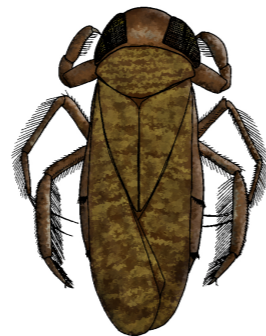
Swims fast



shrimp (3)



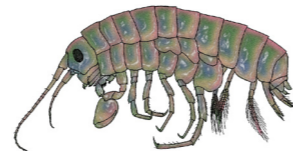
diving beetle (2)



water boatman (2)



back swimmer (1)



scud (3)

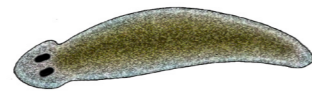
Slides



freshwater snail (1)



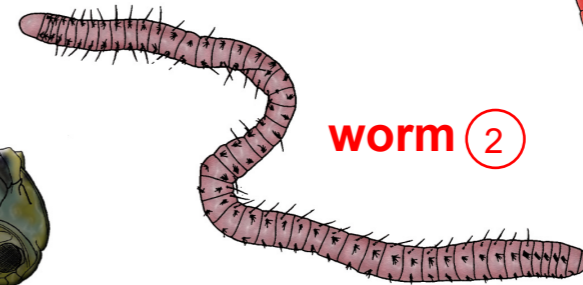
leech (1)



flatworm (2)



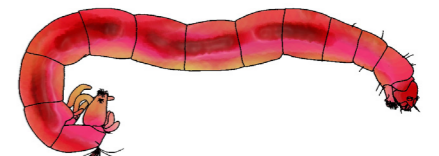
mosquito pupa (1)



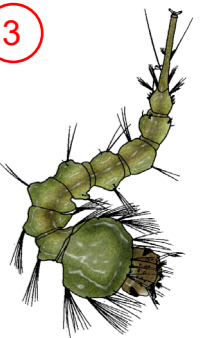
worm (2)



biting midge larva (4)

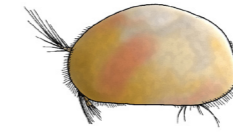


non-biting midge larva (3)

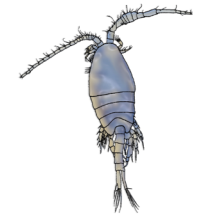


mosquito larva (1)

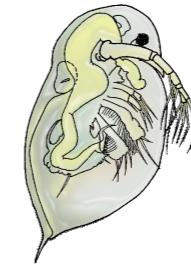
Tiny



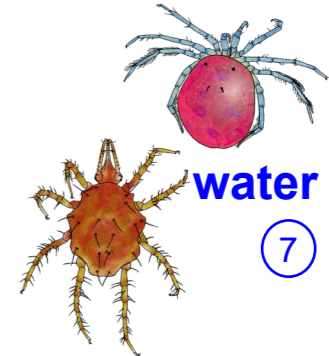
seed shrimp (NR)



copepod (NR)



water flea (NR)



water mites (7)

Wriggles

Sensitivity ratings from SIGNAL2 system in "New sensitivity grades for Australian river macroinvertebrates." Bruce C. Chessman. Marine and Freshwater Research, 2003, 54, 95-103.