

GREEN A^{LEAF}ELAIDE

**Annual Business Plan
2023-24**



Foreword



A message from the Green Adelaide Presiding Member – Professor Chris Daniels

The Green Adelaide Board (the Board) continues to work towards our vision for Adelaide to be a *'cooler, greener, wilder and climate resilient city that celebrates our unique culture'*.

Throughout 2022-23, the Board, supported by staff from the Green Adelaide Branch of the Department for Environment and Water, and our partners across government, NGO and the private sectors, worked hard to deliver a wide range of programs and projects consistent with our Regional Landscape Plan 2021-2026 (RLP).

This 2023-24 Annual Business Plan sets out the Board's proposed expenditure across our range of programs and projects, that align with the goals, focus areas, and desired outcomes for each of our legislated seven key priorities.

A handwritten signature in black ink that reads "C Daniels".

Professor Chris Daniels
BSc (Hons), PhD, DSc, FAICD
Presiding Member

Our work across our priorities remains multi-faceted, and by involving our many community partners we will deliver landmark outcomes of which we are proud. The Board takes on various roles to deliver these programs and projects, including funder, coordinator, facilitator, influencer, capacity builder and community inspirer.

By properly addressing our priorities, and by building on our successes from previous years, we will continue to develop the future liveability of our city. All our actions will sustain and protect Adelaide's natural environment, respond to a drying and warming climate, and contribute to community sustainability, health and wellbeing.

The Board looks forward to implementing our 2023-24 Annual Business Plan and working with our partners on actions that support the environmental, social and economic fabric of our community and move us towards a *'cooler, greener, wilder and climate resilient city that celebrates our unique culture'*.



Recognition of Kurna Miyurna and Yarta

We acknowledge and respect the Native Title holders and traditional owners of the Green Adelaide region - the Kurna Miyurna (Kurna people) - and pay homage to their ancestors who maintained the natural processes of the land we are on and whose spirits still dwell on Yarta (Country).

Mutual respect and trust enables us to walk and work side by side to restore Yarta.

Looking to the future

We commit to strengthening the relationship with the Kurna Miyurna through environmental partnerships such as Warpulai Kumangka (meaning 'working together'). This is an advisory group established under the Native Title Prescribed Body, the Kurna Yerta Aboriginal Corporation.

The Kurna Miyurna's ongoing collaboration with Green Adelaide strengthens the future orientated visions of the respective bodies. Warpulai Kumangka will implement an innovative, world-leading model for cultural engagement in the environmental sector. Focusing on a mutually beneficial learning experience for all stakeholders, the timeless knowledge of the Kurna Miyurna will help to action sustainable growth of biodiversity in the Green Adelaide region.

Green Adelaide will work with Warpulai Kumangka to build capacity and raise awareness around Aboriginal cultural knowledge, values and lore. This will lead to traditional practices being embedded in Green Adelaide led projects and programs.

Iconic programs

Green Adelaide's work across our four iconic programs is interconnected and supports delivery of our overall vision. We will continue to work with our many partners on key initiatives across these iconic programs.



Rewilding our urban landscapes

The Green Adelaide region is ready to become wilder. Whether that be along the rivers that connect the Mount Lofty Ranges to Gulf St Vincent, along the varied environments of our coastline, or the many other opportunities in between. We will lead rewilding efforts by transforming green spaces into thriving ecosystems suitable for threatened and iconic species and biodiverse places for people to enjoy and connect with nature.

- ● **Rewilding**
- ● **Field River Linear Park Restoration**
- ● **Breakout Creek Stage 3**
- ● **Coastal Action**
- ● **Grassroots Grants**
- ● **Stewardship of Endangered Species**



Greening our streets, open spaces and backyards

Our streets, open spaces and backyards are filled with opportunities to accelerate greening and grow our urban forest. This will help combat the urban heat island effect, increase habitat for native wildlife and connect people with nature right on their doorsteps.

We will bring together all stakeholders to drive an ambitious and coordinated approach to greening our city.

- ● **Urban Greening Strategy for Metropolitan Adelaide**
- ● **Cooler, Greener, Wilder Grants**
- ● **Regional Climate Partnerships**
- ● **Urban Heat and Tree Canopy Mapping**
- ● **Cooler, Greener, and Wilder Development**
- ● **Species and Planting Guidance**



Growing Adelaide as a National Park City

Adelaide was announced as a National Park City in December 2021, after Green Adelaide led a movement to gain this title in partnership with local government, NGOs and the Kaurna Miyurna.

For Adelaide National Park City to flourish, the whole community of greater Adelaide must continue to take action to connect with, and enhance, nature and each other as part of our everyday lives.

● ● ● **All Green Adelaide projects contribute towards the Adelaide National Park City movement**



Restoring Kaurna cultural practices

Restoring Kaurna cultural practices will bring truth telling to the forefront of environmental understanding and practices, ensuring Kaurna knowledge is central to creating a sustainable future.

Warpulai Kumangka will work in partnership with Green Adelaide and others to support and restore Kaurna ways of working with the land across Kaurna Yarta.

Sharing knowledge and implementing traditional land management practices will continue to be actions which Green Adelaide promotes and partners on.

● ● ● **Aboriginal Land Management**

● ● ● **Igniting Kaurna Cultural Understanding For All**

● ● ● **Warpulai Kumangka Partnership**

Our vision

Our vision is for a cooler, greener, wilder and climate-resilient Adelaide that celebrates our unique culture.

The below central artwork, Kardalta Tarntanya, represents Green Adelaide's vision through the interconnected nature of our seven priorities.

Green Adelaide will deliver practical outcomes across seven key priorities:



Green streets and flourishing parklands

GOAL: Increase the extent and quality of urban green cover



Coastal management

GOAL: Conserve and restore coastal and marine habitats and biodiversity



Water resources and wetlands

GOAL: Water resources deliver environmental, economic, social and cultural benefits



Controlling pest animals and plants

GOAL: Manage the effects of pests and impact-causing native species



Illustration by
Allan Sumner



Nature education

GOAL: Inspire communities to value, connect with, and care for nature



Biodiversity-sensitive and water-sensitive urban design

GOAL: Build industry and community capacity to design cooler, greener and biodiverse urban infrastructure



**This symbol represents
Green Adelaide**



Fauna, flora and ecosystem health in the urban environment

GOAL: Conserve, restore and expand habitats for native flora and fauna

The board and staff

Green Adelaide Board

The Green Adelaide Board (the Board) is one of the nine regional landscape boards established under the *Landscape South Australia Act 2019*. The Board was specifically created as a body tasked with transforming the landscapes of metropolitan Adelaide.

The Board oversees and strategically guides the delivery of initiatives for our urban community to confront the challenges facing metropolitan Adelaide, including the impacts of climate change, increasing urban density, and loss of biodiversity and connection with nature. It will pursue an innovative and more collaborative approach to creating a cooler, greener, wilder and climate resilient city that celebrates our unique culture.

The Board has established a Risk and Performance Committee to provide independent advice and assurance on risks, controls and financial performance and to support the Board to meet its statutory compliance requirements.

2023-24 Board focus

The Board's 2023-24 Annual Business Plan has been developed for the third year of implementation of the

Green Adelaide Regional Landscape Plan 2021-26, which was officially approved in June 2021.

The Board will also:

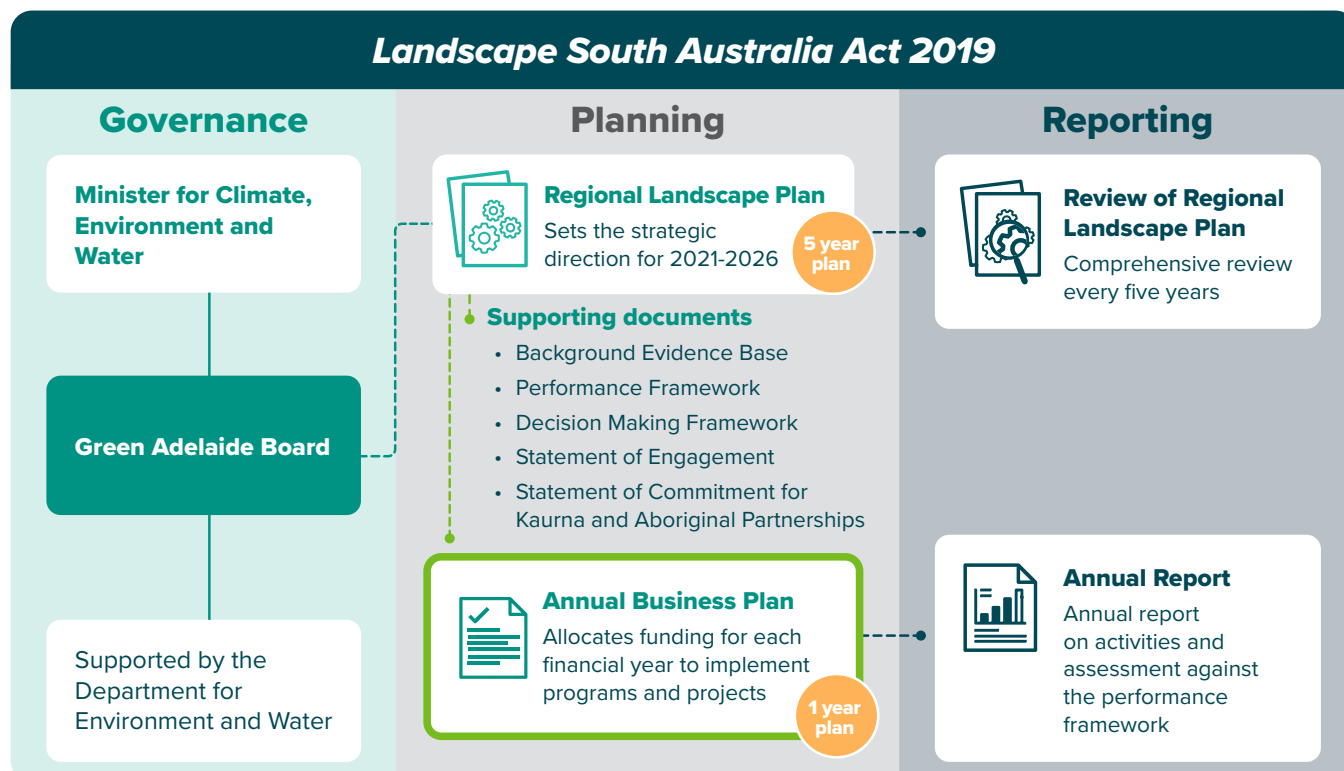
- prepare a statutory annual report and a community-facing report showing how the levy funds have been spent during the financial year, and
- conduct monitoring to understand its impact and the condition of landscapes and report through its 'Performance Framework'.

Staffing arrangements

The Board is supported by Department for Environment and Water (DEW) staff, who are provided through a service agreement.

In 2023-24, it is anticipated that the Board will be supported by 50.1 full-time equivalent (FTE) positions. The Board will also continue to receive a range of corporate services (including finance, human resources, and information technology) through DEW.

A range of partnerships, service agreements, and grants with other organisations will also support staff to deliver on this plan.



Program investment (expenditure)

The Green Adelaide Board adopted its Regional Landscape Plan 2021-2026 in June 2021. This 2023-24 Annual Business Plan represents the third year of implementation of that Plan.



The work of Green Adelaide will remain strategic and influential, driving innovative action across the urban landscape, with a strong focus on the seven key priorities defined within the *Landscape South Australia Act 2019*. During 2023-24, Green Adelaide will continue to invest in Ministerial directives, partnership arrangements and its iconic programs.

The following tables provide the proposed expenditure against each of the seven key legislated priorities.



Table 1: Priorities for investment (expenditure)

Project Expenses by Priority and Project		2023-24 Proposed Budget (\$'000)	2023-24 Total (\$'000)
Landscape Priorities Fund		4,878	4,878
Coastal Management	Total Operating	4,878	4,924
	Program Support		1,606
	Adelaide Beach Management ¹	3,096	
	Coastal Action	773	
	Blue Carbon Futures	320	
	Sharing our Shores with Coastal Wildlife	299	
	Our Blue Backyard	167	
	Conserving Ecological Communities – Marine Ecosystems	137	
	Coastal Ambassadors	134	





	Project Expenses by Priority and Project	2023-24 Proposed Budget (\$'000)	2023-24 Total (\$'000)
Water Resources and Wetlands 	Total Operating		3,954
	Program Support		2,258
	Patawalonga Lake System ¹	1,159	
	Water Planning Management ²	1,149	
	Water Management Assets Operations	684	
	Breakout Creek Stage 3 Redevelopment	238	
	Urban Watercourse Management Program	200	
	Surface Water Monitoring	159	
	Gawler River Icon Planning	150	
	Conserving Ecological Communities – Aquatic Ecosystems	137	
	Environmental Water Provision	54	
	Urban Water Education and Capacity-building Program	25	
Biodiversity-sensitive and Water-sensitive Urban Design 	Total Operating		1,480
	Program Support		614
	Cooler, Greener, Wilder Grants	1,100	
	Biodiversity-sensitive Urban Design Capacity Building	230	
	Water-sensitive Urban Design Capacity Building	150	



	Project Expenses by Priority and Project	2023-24 Proposed Budget (\$'000)	2023-24 Total (\$'000)
Green Streets and Flourishing Parklands 	Total Operating		872
	Program Support		828
	Regional Climate Partnerships	480	
	Greening our Streets and Backyards	200	
	Cooler, Greener, and Wilder Development	107	
	State Sports Park Master Planning Implementation	85	
	Urban Heat and Tree Canopy Mapping ³	0	
	Species and Planting Guidance ³	0	
Fauna, Flora and Ecosystem Health 	Total Operating		2,638
	Program Support		1,868
	Grassroots Grants	1,000	
	Rewilding	700	
	Conserving Ecological Communities	434	
	Threatened Species Management in the Urban Environment	181	
	Field River Linear Park Restoration	160	
	Terrestrial Threatened Ecological Communities	100	
	Woodland Bird Project	43	
	Stewardship of Endangered Species	20	



	Project Expenses by Priority and Project	2023-24 Proposed Budget (\$'000)	2023-24 Total (\$'000)
 Controlling Pest Plants and Animals	Total Operating		681
	Program Support		531
	Landscape Officer Partnership	275	
	Managing Impacts – Urban Animal and Plant Control Partnership	180	
	Managing Impacts – Native Impact Causing Species	84	
	Managing Impacts – New and Emerging Pests	60	
	Weed Officer Partnership	52	
	Managing Impacts – Reducing Total Grazing Pressure	31	
 Nature Education	Total Operating		3,377
	Program Support		2,014
	Education Staffing Partnerships	1,300	
	Community Environment Centres	885	
	National Park City	500	
	Nature-based Play Partnerships	271	
	Igniting Kaurua Cultural Understanding For All	210	
	Education and Capacity Building	161	
Volunteer and Community Group Support		50	
Total Operational Project Expenditure⁴			22,803
Total Program Support Expenditure⁵			9,719

Explanatory notes:

1. Ministerial directives made under Section 14(3) of the *Landscape South Australia Act 2019* have been put in place for management of the Patawalonga Lake System and Adelaide's beach and coastal management.
2. State Water Planning and Management contributions include the following functions: water licensing and assessment, water resource monitoring, state and condition reporting for water resources, compliance activities and water planning advice to support the management of water resources. These services are provided by the DEW, including departmental staff based regionally.
3. Project has no base operating budget and will be delivered with staff time and/or carryover budget approved by Treasury to the 2023-24 financial year.
4. Operational Project Expenditure excludes budget that has been approved by Treasury from the 2021-22 financial year to the 2023-24 financial year to support the delivery of projects aligned to the Board's priorities.
5. Program Support Expenditure includes salaries and wages as well as business and administration, communication and corporate services expenses that support the delivery of all of the Board's priorities.

Sources of funding (income)

Table 2: Sources of funding

Funding Source	2023-24 Income (\$'000)
Landscape and water levies¹	
Regional landscape levy	32,132
Water levy	240
Total Levy Income¹	32,372
Interest ²	150
TOTAL INCOME³	32,522

1 Landscape and water levy income to be raised in 2023-24 is based on 8.4% actual CPI rate (September 2022 quarter in Adelaide) increase on the 2022-23 income.

2 Interest income to be confirmed.

3 Income may also be derived through the year from external partners, including local government, for a range of priorities.

Landscape and water levies

To enable the Board to undertake its functions, the *Landscape South Australia Act 2019* provides for two types of levies to be raised:

- **Regional landscape levy:** A levy collected by constituent councils from rate payers.
- **Water levy:** A levy collected from water licence holders in the region.

Why have levies?

The landscape and water levies are a primary source of funding for the management of the region's landscapes, and are collected to manage the natural resources and landscapes which benefit everyone. The levies enable the Board to deliver important programs and projects, and also enable it to leverage significant, additional effort, greatly increasing the amount of work achieved across the region.

Landscape levy

The landscape levy is raised and collected by local councils. Councils will continue to pay quarterly contributions to the Board and gazette a levy rate to reimburse themselves for this amount.

In the Green Adelaide region, the share of the total landscape levy that each local council collects is based on the proportion of the total capital value of the region in that council area (see Table 3).

The total amount of income collected from the landscape levy in 2023-24 is based on an 8.4% actual CPI rate (September 2022 quarter in Adelaide) increase on the 2022-23 income.



Table 3: Council contributions to landscape levy, collection fees, and average levy contributions for 2023-24

Council area	Council contribution to regional landscape levy 2023-24 (\$)	Council collection fees ¹ based on standard rates (\$ GST exclusive)
Adelaide City Council	1,773,741	9,824
City of Burnside	1,994,643	8,901
Campbelltown City Council	1,391,211	10,000
City of Charles Sturt	3,430,094	20,221
Holdfast Bay City Council	1,443,423	8,744
Corporation of the City of Marion	2,261,866	15,672
City of Mitcham	2,051,623	11,203
City of Norwood, Payneham and St Peters	1,523,277	8,790
City of Onkaparinga	2,993,281	24,415
City of Playford	1,289,105	15,880
City of Port Adelaide Enfield	3,176,410	21,611
City of Prospect	683,069	5,771
City of Salisbury	2,289,374	20,524
City of Tea Tree Gully	1,995,524	15,372
Corporation of the City of Unley	1,666,190	8,325
Corporation of the City of Walkerville	375,101	4,009
City of West Torrens	1,794,519	11,813
TOTAL	32,132,452	221,075

1 Councils receive collection fees for collecting the landscape levy. Figures above are indicative of 2023-24 fees.



Water levy

Water levies are collected by the DEW on behalf of the Minister and paid to the landscape board. In 2023-24, the Board will raise water levies in accordance with the existing levy basis, on a rate per ML of water allocated.

The levy rates for 2023-24 (Table 4) are based on an 8.4% actual CPI rate (September 2022 quarter in Adelaide) increase on the 2022-23 rates.

The Board has approved the introduction of a water levy for the Central Adelaide PWA and Dry Creek PWA from 2023-24 onwards, bringing these areas into line with other prescribed water resources in the region.

Water sharing arrangements

For the prescribed water resources that are shared by Green Adelaide and neighbouring landscape management regions, the water levy is shared between the boards in proportion to the amount of water allocated in each region.

The Board will work with the Northern and Yorke, and Hills and Fleurieu landscape boards to ensure that water planning and programs are implemented collaboratively.

Table 4: Water levy rates, and proportion of water allocated in Green Adelaide for each prescribed water resource

Prescribed water resource	2023-24 levy rate	Proportion of water allocated within Green Adelaide
Central Adelaide PWA	\$7.05/ML of water allocated	87%
Dry Creek PWA	\$7.05/ML of water allocated	100%
McLaren Vale PWA	\$7.05/ML of water allocated	4%
Northern Adelaide Plains PWA	\$7.05/ML of water allocated	67%
Western Mount Lofty Ranges PWRA	\$7.05/ML of water allocated	4%

Note that the water levy rate that is to be applied in the McLaren Vale PWA and Western Mount Lofty Ranges PWRA is set by the Hills and Fleurieu Landscape Board through the scheme to apportion water levies in circumstances where a prescribed water resource spans multiple landscape management regions. The Green Adelaide Board has set the water levy rate that is to be applied to the Central Adelaide PWA, Dry Creek PWA, and the Northern Adelaide Plains PWA.



For further information:

Green Adelaide
81-95 Waymouth St
Adelaide SA 5000

(08) 7424 5760
dew.greenadelaide@sa.gov.au

greenadelaide.sa.gov.au

 @GreenAdelaide

 @GreenAdelaideSA

#GreenAdelaide



With the exception of the Piping Shrike emblem, and other material or devices protected by Aboriginal rights or a trademark, and subject to review by the Government of South Australia at all times, the content of this document is licensed under the Creative Commons Attribution 4.0 Licence. All other rights are reserved.

Disclaimer: The Green Adelaide Board and the Government of South Australia, their employees and their servants do not warrant or make any representation regarding the use or results of use of the information contained herein as to its correctness, accuracy, currency or otherwise. The Green Adelaide Board and the Government of South Australia, their employees and their servants expressly disclaim all liability or responsibility to any person using the information or advice contained herein.