

South Australian Heritage Council

HERITAGE NEWS – OCTOBER 2023



Image: Dr Kent's Paddock Housing Complex. Source: DEW files

Heritage News contains news from the South Australian Heritage Council meeting and other topical news relating to conserving and promoting South Australia's unique heritage.

The South Australian Heritage Council (Council) met on 19 October 2023.



**Government of
South Australia**

Contents

Confirmations in the South Australian Heritage Register	3
Tantanoola Cave Complex, Princes Highway, Tantanoola. On Boandik Country.....	3
Dr Kent's Paddock Housing Complex, 3-57 Capper Street & 28-48 Rundle Street, Kent Town. On Kurna Country.....	5
Intent to Designate on the South Australian Heritage Register	7
Lake Palankarinna Fossil Reserve. On Dieri Country.....	7
Better Heritage Information Reports	8
Torrens Building, 202-220 Victoria Square, Adelaide. On Kurna Country.....	8
Angas Mill, 27 Commercial Road, Strathalbyn, On Ngarrindjeri and Peramangk Country.....	9
Former Robe Courthouse and Police Complex, 8 Smillie Street, Robe. On Bunganditj Country.....	10
St Mary's Star of the Sea Catholic Church, 2 Hagen Street, Robe. On Bunganditj Country.....	11
Inneston Lake and Deep Lake Geological Sites Dhillba Guuranda-Innes National Park', Pondolowie Bay Road, near Stenhouse Bay. On Narrunga Country.....	12
Marion Lake Geological Site, Innes National Park, Stenhouse Bay. On Narrunga Country.....	13
Other Heritage News / Events	14
2022/023 Communications Report.....	14
Government House Picnics / Tours.....	14
Cummins House.....	14
Art Gallery of South Australia.....	15
Friends of Torrens Island.....	15
Lochend House.....	16
Tea Tree Gully Heritage Museum.....	17
Cape Jaffa Lighthouse	17
Managing Lead-based paint in Heritage places	17
Heritage by the numbers	18
The Criteria	19
Heritage Places Act 1993 – Section 16—Heritage Significance.....	19
More information	20

Confirmations in the South Australian Heritage Register

Tantanoola Cave Complex, Princes Highway, Tantanoola. On Boandik Country.

The Tantanoola Caves Complex is located along a dolomitic karst ridge featuring the only known pink dolomite caves in South Australia. The abundance and variety of types of decorations including drapery, helictites, flowstones and wedding cake formations found in Tourist Cave and Lake Cave are impressive in their density and complexity. The Tantanoola Cave Complex including Tourist Cave, Lake Cave, Up-and-Down Rocks and 16 smaller karst features have a high potential of yielding new scientific information about the natural history of South Australia and specifically the geological and speleological development of the South East. Knowledge of the dolomite presence will also contribute to a broader understanding about the processes, likely volcanic, required to convert limestone to dolomite, and the regional impact of volcanism.

At its 19 October 2023 meeting, the Council confirmed the provisional entry of Tantanoola Cave Complex in the South Australian Heritage Register under criterion c) of Section 16 of the *Heritage Places Act 1993* and also designated this place as a place of geological and speleological significance pursuant to section 14 (7)(a) of the *Heritage Places Act 1993*.



Image: The interior of Tantanoola Tourist Cave. Source: DEW files 7 February 2023



Image: The interior of Tantanoola Tourist Cave including the wedding cake formation
Source: Dew Files 7 February 2023



Image: The underground lake in Tantanoola Lake Cave, pink dolomite is distinguishable around the lake's circumference. Source: DEW files.

Dr Kent's Paddock Housing Complex, 3-57 Capper Street & 28-48 Rundle Street, Kent Town. On Karna Country.

At its 19 October 2023 meeting, the Council confirmed the provisional entry of Dr Kent's Paddock Housing Complex in the South Australian Heritage Register under criterion a) and g) of Section 16 of the *Heritage Places Act 1993*.

It was initially provisionally listed under criterion a) only. After Council considered the written and oral submissions, the Council found that it also met the threshold for listing under criterion g).

It was confirmed under criterion g) for its association with Newell Platten, architect.

There was significant public interest in the heritage determination for this place. The Council had received 38 written submissions during the public consultation period - a record number. On the day of its meeting, the Council heard seven oral representations and had an additional sixteen people observing the meeting from the public gallery. Council thanks all people that presented and those that attended.

Stage 1 of Dr Kent's Paddock Housing Complex demonstrates an important evolution in the history of social housing in South Australia. Built by the South Australian Housing Trust in 1978-1979 and designed by acclaimed South Australian architect Newell Platten while employed as Chief Design Architect, Dr Kent's Paddock Housing Complex demonstrates the South Australian Housing Trust's transition from provider of homes for workers to become the primary provider of social housing in South Australia. To meet the increasing needs for social housing during a time of social and economic change and inspired by broader urban renewal and densification of the urban environment, the South Australian Housing Trust became the industry leader in providing medium density cluster infill developments with Dr Kent's Paddock Housing Complex considered the best of this type.

Dr Kent's Paddock Housing Complex also has a special association with the work of Newell Platten. Noted for his residential designs, Platten designed Dr Kent's Paddock Housing Complex at the height of his career and it demonstrates the translation of his ideas for medium density infill design begun in the late 1960s. The complex embodies the design innovation in social housing Platten was attempting to achieve and it is one of the best examples of the new typology Platten led in the creation of for the South Australian Housing Trust in the 1970s and 1980s.

For more information about this place, the Heritage Summary of State Heritage Place document can be downloaded here: <https://www.environment.sa.gov.au/topics/heritage/sa-heritage-register/entries-confirmations>



Image: Dr Kent's Paddock Housing Complex. Source DEW files



Image: Dr Kent's Paddock. Central communal open space/garden, looking east, with flats to left side of image and townhouses with private courtyard gardens to right side of image.



Image: Former John Martin's Warehouse – now adaptively reused for living quarters.

Intent to Designate on the South Australian Heritage Register

Lake Palankarinna Fossil Reserve. On Dieri Country.

There are provisions in the *Heritage Places Act 1993* which enable places of special significance to be identified and "Designated" by the Council. Excavating or collecting specimens from these places will be controlled by permit. These provisions are intended to be used only for a small number of scientifically valuable and fragile sites.

The Lake Palankarinna Fossil Reserve, located approximately 90km north of Marree, was entered in the South Australian Heritage Register as a State Heritage Place on 4 March 1993, under the provisions of the *South Australian Heritage Act 1978*. At its meeting, the Council agreed it intends to designate this State Heritage Place for its palaeontological and geological significance.

The Lake Palankarinna Fossil Reserve is well-known for its diverse faunal assemblages that extend throughout the majority of the Cenozoic Era. It is regarded as one of the highest yielding sites for mammalian fossils in Australia and contains 59 sites of scientific value.

This decision triggers three months of consultation with the owner of this place.

Better Heritage Information Reports

There are a number of State Heritage Places that were heritage listed at a time when only limited information was required to enter them in the Register. In many cases this included only the address of the place, the name and the Certificate of Title. Council, with the assistance of Heritage South Australia assessment officers, is now improving the information about why they are State Heritage Places.

At this meeting the Council approved six reports for inclusion in the supplementary information to the Register entry for each of the following:

Torrens Building, 202-220 Victoria Square, Adelaide. On Kurna Country.

The Torrens Building is one of the State's most notable surviving purpose-built Government office buildings. Completed in 1881, it was the largest public building of its period and one of the largest buildings in the city. Other government office buildings of comparable significance entered in the State Heritage Register are the former Treasury Offices in King William Street and the Adelaide Railway Station.

It is the first building erected on the site and was used continuously for Government Offices for over a century. Notable occupants have included the Registrar-General and the Public Works Department and its successors. The building is also of architectural significance as the best remaining example of Renaissance Palladian style architecture in Adelaide, that quality reflecting the significant role of government agencies in the development of the State.

The Torrens Building was confirmed as a State Heritage Place on 28 May 1981.



Image: West Elevation of the Torrens Building

Angas Mill, 27 Commercial Road, Strathalbyn, On Ngarrindjeri and Peramangk Country.

The Angas Mill is one of the earlier flour mills built in South Australia and is associated with the agricultural and economic development of the colony from its earliest years and into the twentieth century. Constructed c.1851, it is a vernacular industrial building and was constructed for pastoral pioneer Donald Gollan. The Angas Mill processed wheat and grain grown by farmers around Strathalbyn for over 100 years, demonstrating the critical importance of primary production and the flour milling industry to the state.

The Angas Mill was confirmed as a State Heritage Place on 5 April 1984.



Image: Angas Mill. Source: DEW files.

Former Robe Courthouse and Police Complex, 8 Smillie Street, Robe. On Bunganditj Country.

The Former Robe Courthouse and Police Complex demonstrates the colonial government's role in developing key institutions throughout the colony's regional areas and specifically the expansion of South Australia's judicial system. Built between 1848 and 1864, the courthouse complex is an early example of a regional facility devoted to law enforcement and civil and criminal legal proceedings.

This place was confirmed as a State Heritage Place on 24 March 1983.



Image: View to front of the Courthouse in December 2003. The roof sheeting has been replaced and the 'Police Station' sign is still on the building

St Mary's Star of the Sea Catholic Church, 2 Hagen Street, Robe. On Bunganditj Country.

St Mary's Star of the Sea Catholic Church demonstrates the origins and expansion of Catholicism throughout South Australia during the first few decades of the colony. As the chapel also housed a Catholic primary school from around 1866 to 1880, it is also associated with the origins of Catholic as opposed to government controlled or state education in South Australia. Additionally, it reflects the social and cultural development of a key government town and port in the mid-nineteenth century.

This place was Confirmed as a State Heritage Place on 31 August 1983.



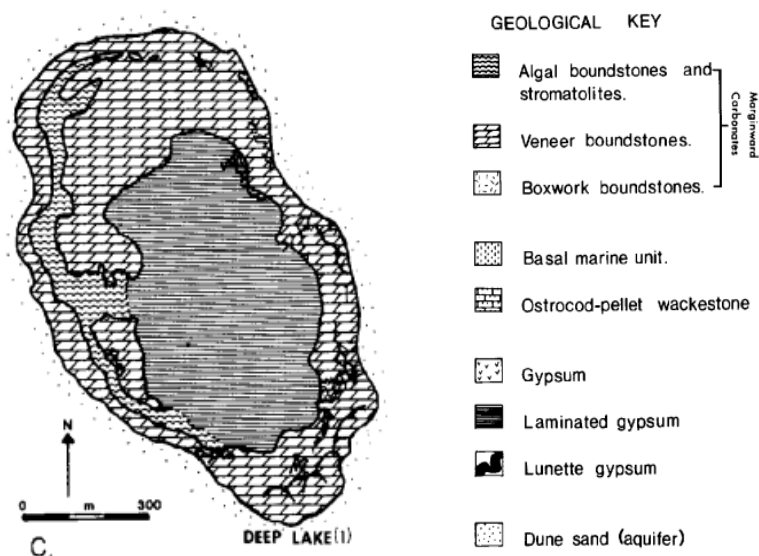
Image: Star of the Sea Church.

Inneston Lake and Deep Lake Geological Sites Dhillba Guuranda-Innes National Park' , Pondolowie Bay Road, near Stenhouse Bay. On Narrunga Country.

Inneston Lake and Deep Lake are among a small number of places in South Australia where living stromatolites occur. Stromatolites (structures formed in rock by an ecosystem composed of several extremely ancient life forms, bacteria and cyanobacteria) have long been known in the fossil record and are among the earliest life forms known, existing 3,500 million years ago. They were believed to have become extinct about 100 million years ago, until the discovery of recent stromatolites in several lakes in South Australia and Western Australia.

Inneston and Deep Lakes are of outstanding scientific importance because of the occurrence of living stromatolites, and provide rare opportunities in which to study the morphology and environmental conditions for the formation of a modern occurrence of one of the earliest life forms on earth.

This place was Confirmed as a State Heritage Place on 8 July 1999.



Geological map of Deep Lake.

Source: Warren, JK (1982)

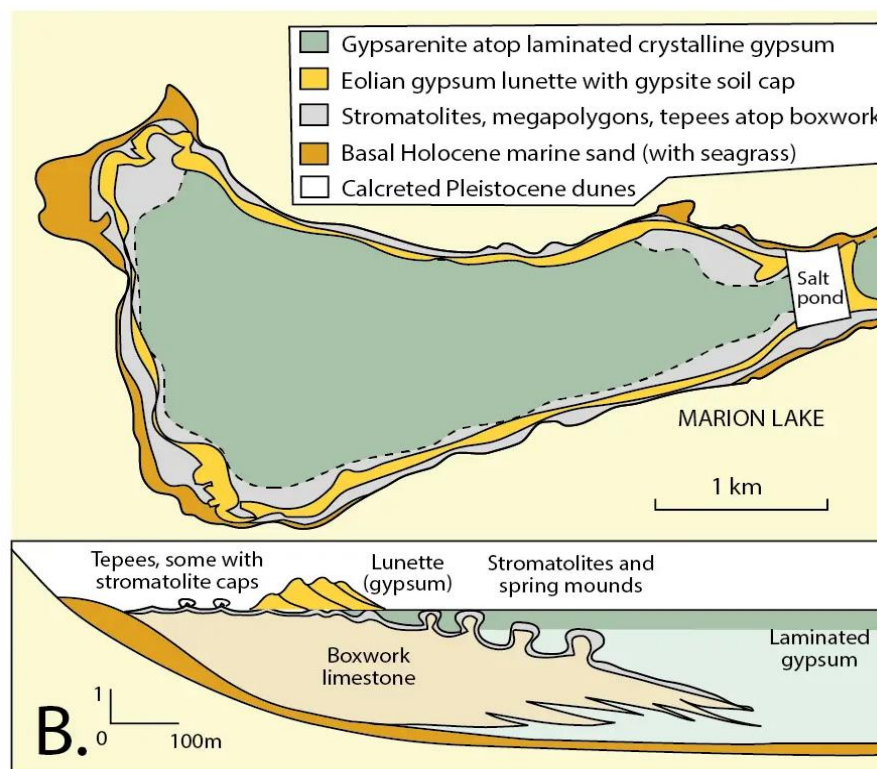
Image: Geological Map of Deep Lake.

Marion Lake Geological Site, Innes National Park, Stenhouse Bay. On Narrunga Country

Marion Lake Geological Site is one of only a few places in South Australia where modern stromatolites can be found and may provide insight into the underlying processes required for the formation of these structures. The stromatolites at Marion Lake are estimated to be between 3000 to 5000 years old, and in appearance differ little from ancient examples which were formed by cyanobacteria, one of the earliest forms of life on earth. Too young to be fossils, the Marion Lake structures are a rare example of subfossil stromatolites and with the other geological features associated with the saline lake, creates a natural landscape that is of outstanding scientific importance due to its potential to yield detailed information about the natural history of South Australia.

The Lake's geological features demonstrate formation by the evaporation of water and deposition of minerals over thousands of years to form carbonate and gypsum deposits. Geological features such as boxwork limestone, springmounds, lunettes and tepees have all formed throughout the area and contribute to its geological significance. These, in tandem with similar structures at the nearby Deep and Inneson Lakes have the potential to yield detailed information on the natural evolution of South Australia

The Marion Lake Geological Site was confirmed as a State Heritage Place on 8 July 1999.



A map of Marion Lake noting geological features, interpreted from Warren JK (1982).

Source: [Saltwork Consultants Pty Ltd \(2016-2023\)](#)

Other Heritage News / Events

2022/023 Communications Report

Council's public facing communications document that details the South Australian Heritage Council activities between 1 July 2022 and 30 June 2023 is now available to read.

The document includes information about all the listing decisions of Council as well as strategic decisions where there was a publically reportable outcome. This report is in addition to the formal Annual Report to Parliament.

It can be downloaded from Council's webpage:

<https://cdn.environment.sa.gov.au/environment/images/6.7-SA-Heritage-Council-Communication-document-2022-23.pdf>

Government House Picnics / Tours

From September 2023, on the first Friday of every month, Her Excellency the Governor is opening the grounds of Government House for the public to enjoy their lunch picnic-style on the lawns. Each month, visitors can enjoy a performance by a local band or orchestra.

Visitors are invited to explore the Government House gardens and bring their own food, beverages, chairs and picnic rugs. The initiative reflects Her Excellency's commitment to welcoming as many people as possible into the Government House grounds.

For garden enthusiasts such as yourselves, earlier in the day, tours of the garden will be conducted by guides from the Botanic Gardens of Adelaide. Participants will learn about how the Government House garden has developed over time, its oldest trees, the history of its statues and sculptures, and more.

Upcoming Dates: December 1 2023, January 5 2024, February 2 2024, March 1 2024, and May 3 2024.

Lunch on the Lawns

Gates open from 12-2pm, corner North Terrace and King William Road.

Entry is free, no bookings required. Visitors must bring their own food, rugs etc.

Garden tours

10.45am-11.45am.

Entry is free, bookings are required: telephone 08 8203 9800.

Cummins House

Cummins House is an important State Heritage Place located in Novar Gardens in the western beachside suburbs of Adelaide and is one of South Australia's earliest extant buildings.

It was the residence of South Australian pioneer and politician John Morphett, purpose-built for him and lived in by five generations of the Morphett family until sold to the State Government in the 1970s. There are very few residences in South Australia occupied by one family for such a long period. Morphett was of considerable significance to the establishment and development of the Colony of South Australia.

Today Cummins House and gardens are carefully tended by the dedicated volunteers of The Cummins Society who run regular guided tours.

Tours are the first and third Sunday of the month between 2pm and 4:30pm. Bookings are essential as the number of people in each group is limited to comply with COVID-19 requirements. Tour and Devonshire Tea for \$15 per person. For bookings please call 0417 852 320.

Art Gallery of South Australia

Tarnanthi at the Art Gallery showcases the latest works of contemporary art from Aboriginal and Torres Strait Islander artists across the continent.

A major feature is the first survey exhibition of acclaimed portraitist Vincent Namatjira, whose works offer a wry Aboriginal perspective on the politics of history, power and leadership. Namatjira's dynamic community of Indulkana is also the source of Tiger Yaltangki's painted incursions into classic AC/DC rock posters and Iwantja Arts' fortieth anniversary retrospective.

Tarnanthi is on display from 20 Oct 2023 – 21 Jan 2024.

Bookings and further detail here:

<https://www.agsa.sa.gov.au/whats-on/tarnanthi/tarnanthi-2023/tarnanthi-at-agsa/>

The Art Gallery is a State Heritage Place.

Friends of Torrens Island

The Friends of Torrens Island Inc. (FOTI) is a group which aims to: "Preserve, conserve, promote and enhance the environmental, historical and cultural heritage of Torrens Island."

The main role of the FOTI is maintaining the heritage-listed Quarantine Station site, and as a Friends of Parks member group we have an interest in the adjacent Conservation Park. Volunteer activities include conservation (tree-planting, weeding and seed collection), and advocating for and promoting the historical and environmental riches of the Island.

FOTI are delighted to invite you to come along to celebrate what it has achieved at the Quarantine Station.

Please call the membership Secretary on 0422 902 934 or email malsgold@internode.on.net for details about visiting, participating in working bees and gate access.

Working bees are held the last Sunday of each month and start about 10:00am and finish around 2:00pm.

Access to the site is via AGL security, who must be informed you intend to visit there, or you will not be allowed access on to the island.

Friends of Torrens Island (FOTI) would be very pleased to have your company and assistance to help with maintenance, weeding, and other jobs. It's also an opportunity to spend time in this very unique place not far from the CBD. FOTI members have diverse interests including heritage, conservation, community projects and Landcare. Regardless of our backgrounds or experience we are united by our passion for this unique and significant island.

Find FOTI on Facebook <https://www.facebook.com/Friends-of-Torrens-Island-1374851426059651>



Image: Torrens Island Quarantine Station. Photo supplied by Angela Wojcik

The Torrens Island Quarantine Station including Jetty, Cemetery and Mortuary is a State Heritage Place, registered on 21 October 1993.

Lochend House

Lochend house, located on Lochend Drive in the Lochiel Park Estate in Campbelltown, is the original home of Charles James Fox Campbell, after whom Campbelltown is named. The home is owned in trust by the City of Campbelltown, as a place of State Heritage significance.

The Campbelltown Historical Society takes great pride in opening the house to the public. It will be open quarterly in 2024. Volunteers provide visitors with information about the history of the house and the restoration process.

Gold coin donation appreciated and Devonshire tea available for purchase.

Also – keep an eye out for the Lochend House Open Day on 4th February 2024, where the volunteer group plans to celebrate Charles Campbell's birthday (9th January 1807), with a Scottish theme to the food and decorations.

For further information, please contact Anna Leombruno, Campbelltown Historical Society Inc. President, on 0418 806 118.

Tea Tree Gully Heritage Museum

The Tea Tree Gully Heritage Museum will be having an extended opening for the “Sounds of Christmas” event this year.

The museum will be filled with the sounds and decorations of Christmas Past. Also, visitors can enjoy Christmas treats and refreshments in the tearoom. Then on Sunday our famous sausage sizzle will be available. Early Christmas shopping of unique hand-made gifts in our gift store will be an added treat.

Dates are Thursday 16th to Saturday 18th November, 10am – 2pm daily, and Sunday 19th November 11am – 4pm.

Tea Tree Gully Heritage Museum is a State Heritage Place located at 3 Perseverance Road, Tea Tree Gully.

Cape Jaffa Lighthouse

This historic lighthouse originally was 41 metres high and known as a Wells Screw Pile designed to suit the local conditions. The 8 roomed dwelling accommodated two lighthouse keepers and families with enough stores to last several weeks. The Chance Brothers lantern could be seen for a distance up to 40 kilometres.

In the early 1970's the Federal Government decided to install an automatic light and hand over the Lighthouse to the care of the National Trust at Kingston. The Lighthouse was moved to Marine Parade Kingston and opened in 1976 as a Museum.

Tours of the Lighthouse are available on the hour, 10am to 3pm daily, during SA public school holidays. The tour duration is 45 mins.

More information about booking a tour here: <https://www.nationaltrust.org.au/places/cape-jaffa-lighthouse/>

Some preservation tasks for the Lighthouse require a high level of expertise which comes at a significant cost beyond the means of the Local National Trust Branch. An appeal has been set up to specifically raise funds to assist us with three urgent conservation tasks:

- Removal of rust and corrosion externally.
- Paint the external surfaces of the lighthouse.
- Re-caulk the lantern glazing and replace a glazing panel.

The Cape Jaffa Lighthouse Conservation Appeal is open and accessed through:

[Donate to the National Trust of South Australia – National Trust](#)

The Cape Jaffa Lighthouse is a State Heritage Place and is located at 32 Marine Parade, Kingston South East.

Managing Lead-based paint in Heritage places

International Lead Poisoning Prevention Week was 22-28 October, 2023 and we would like to draw your attention to managing any lead based paint in your heritage place.

Buildings and houses built before 1980 are likely to contain lead-based paint.

There is no safe level of lead exposure for anyone. It can be harmful to people of all ages, but young children and unborn babies are at greatest risk, as it causes damage to their developing brains and nervous systems.

It is important to be aware of the likelihood of lead-based paint being present in homes and buildings and then plan to avoid putting their health and the health of families and building occupants at risk.

Lead-based paint in good condition poses a low exposure risk. But once this paint starts deteriorating, property-owners need to act to prevent or reduce the risk of lead exposure in the home or building. Deciding which action to take depends on the degree of paint deterioration and its location. Minor deterioration can be stabilised with modern topcoat paints or a specialised encapsulant but major deterioration requires paint removal or enclosure of the area. Experienced painting contractors can advise about the extent of deterioration if people are unsure and the use of encapsulants.

Find resources about lead-based paint, renovating and repainting and lead safety precautions as well as other sources of lead exposure and lead health effects at [Lead | SA Health](#)

Heritage by the numbers

South Australia has a rich and multifaceted history reflected in its tangible heritage. Here are some statistics about Heritage in South Australia, by the numbers:

- 1 World Heritage Place (Australian Fossil Mammal Sites at Naracoorte)
- 10 National Heritage Places
- 11 Commonwealth Heritage Places
- 2324 Confirmed State Heritage Places
- 7 Provisionally listed State Heritage Places
- 17 State Heritage Areas
- 29 State Heritage Objects
- 17 State Heritage Places Designated for their archaeological significance
- 22 State Heritage Places Designated for their geological significance
- 9 State Heritage Places Designated for their palaeontological significance
- 3 State Heritage Places Designated for their speleological significance
- Over 7000 Local Heritage Places in 38 Local Councils

The Criteria

Heritage Places Act 1993 – Section 16—Heritage Significance

A place is of heritage significance if it satisfies one or more of the following criteria:

- (a) it demonstrates important aspects of the evolution or pattern of the State's history; or
- (b) it has rare, uncommon or endangered qualities that are of cultural significance; or
- (c) it may yield information that will contribute to an understanding of the State's history, including its natural history; or
- (d) it is an outstanding representative of a particular class of places of cultural significance; or
- (e) it demonstrates a high degree of creative, aesthetic or technical accomplishment or is an outstanding representative of particular construction techniques or design characteristics; or
- (f) it has strong cultural or spiritual associations for the community or a group within it; or
- (g) it has a special association with the life or work of a person or organisation or an event of historical importance.

More information

If you would like to know more about the work of the South Australian Heritage Council and Heritage South Australia, here are some useful links.

Receive information through our email distribution list. Email us at:
dew.heritage@sa.gov.au

Web: <https://www.environment.sa.gov.au/topics/heritage>



Facebook: <https://www.facebook.com/heritagesouthaustralia>



LinkedIn - Heritage South Australia:



Published by the South Australian Heritage Council
Government of South Australia
8 November 2023

Telephone +61 (8) 8226 2127

www.environment.sa.gov.au



With the exception of the Piping Shrike emblem, other material or devices protected by Aboriginal rights or a trademark, and subject to review by the Government of South Australia at all times, the content of this document is licensed under the Creative Commons Attribution 4.0 Licence. All other rights are reserved.

© Crown in right of the State of South Australia



Government of
South Australia