

The projected flow inundation areas displayed are indicative only and subject to change. They should be used as a guide only.

The data contained in this map has been modelled to an accuracy sufficient only for broad scale flood risk management and planning.

Flood assessment for particular sites along the watercourses will require more detailed interpretation, survey and hydraulic analysis by appropriately experienced personnel.

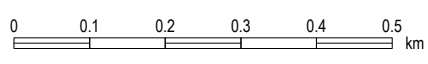
Produced By: Flood Management Team
 Department for Environment and Water
 Projection: Transverse Mercator - MGA Zone 54
 Datum: Geocentric Datum of Australia 2020
 Date: October 2022

Government of South Australia
 Department for Environment and Water

Flow Rate

- 200,000 ML/day
- 1956 Flood Extent
- Road

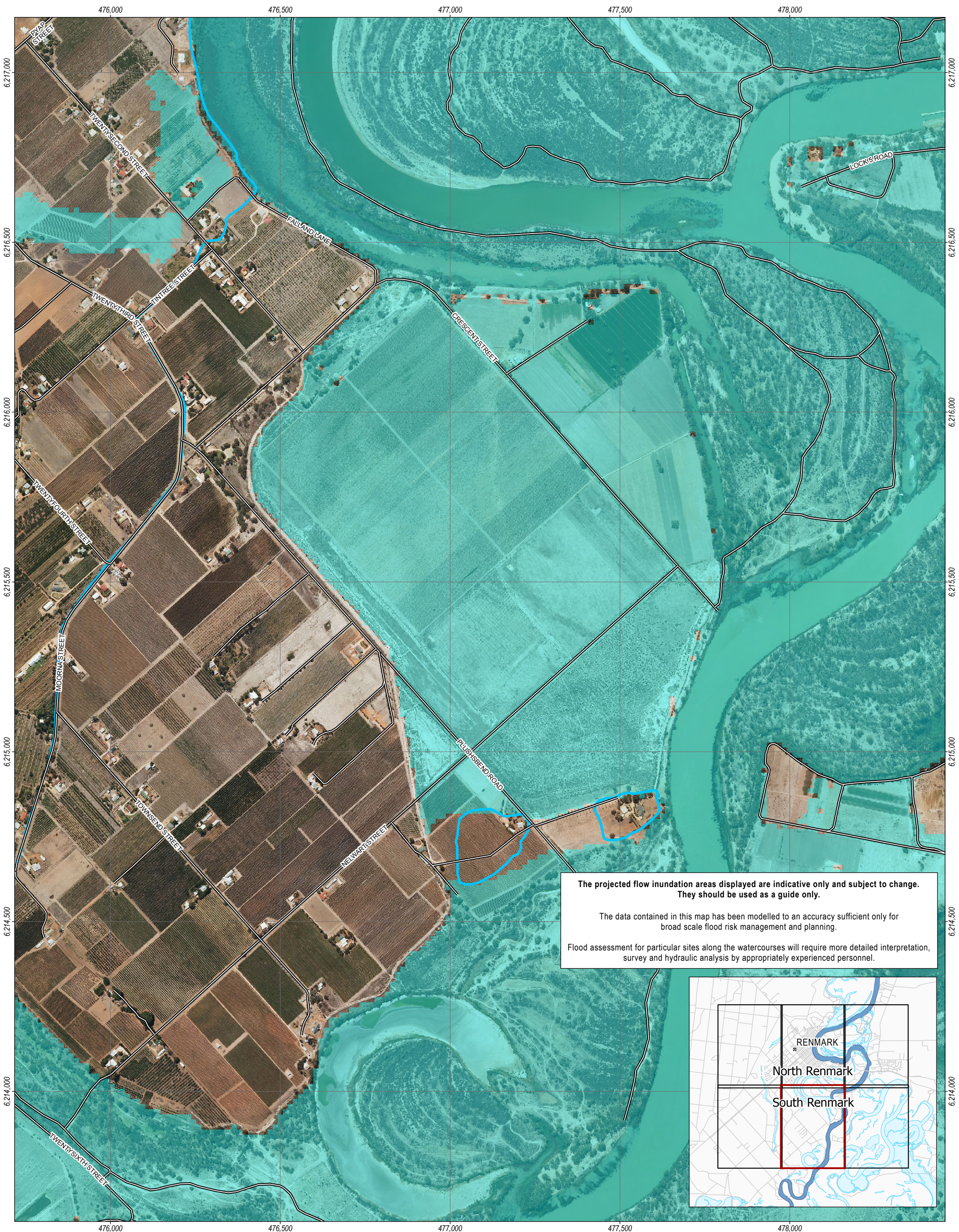
PROJECTED FLOW INUNDATION AREAS RENMARK, SOUTH AUSTRALIA



Note: Aerial photography acquired in March 2008.

DISCLAIMER: The Department for Environment and Water, its Employees and servants do not warrant or make any representation regarding the use, or results of use of the information contained herein as to its correctness, accuracy, currency or otherwise. The Department for Environment and Water, its employees and servants expressly disclaim all liability or responsibility to any person using the information or advice contained herein.

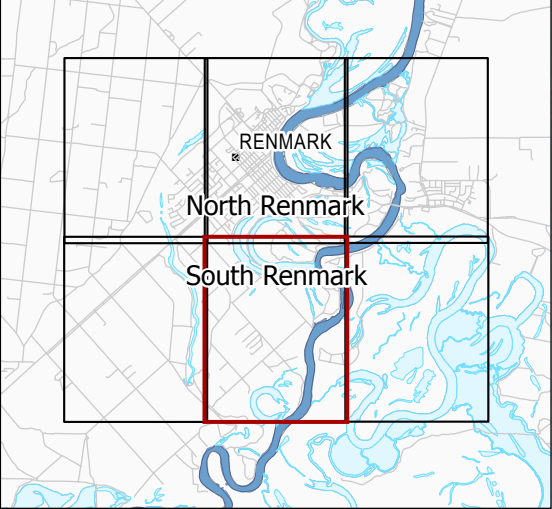
© Government of South Australia, through the Department for Environment and Water 2022.
 This work is Copyright. Apart from any use permitted under the Copyright Act 1968 (Cwlth), no part may be reproduced by any process without prior written permission obtained from the Department for Environment and Water. Requests and enquiries concerning reproduction and rights should be directed to the Chief Executive, Department for Environment and Water, GPO Box 2834, Adelaide SA 5001.



The projected flow inundation areas displayed are indicative only and subject to change. They should be used as a guide only.

The data contained in this map has been modelled to an accuracy sufficient only for broad scale flood risk management and planning.

Flood assessment for particular sites along the watercourses will require more detailed interpretation, survey and hydraulic analysis by appropriately experienced personnel.



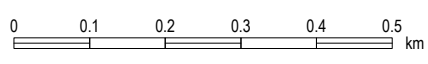
Produced By: Flood Management Team
 Department for Environment and Water
 Projection: Transverse Mercator - MGA Zone 54
 Datum: Geocentric Datum of Australia 2020
 Date: October 2022



Flow Rate

- 200,000 ML/day
- 1956 Flood Extent
- Road

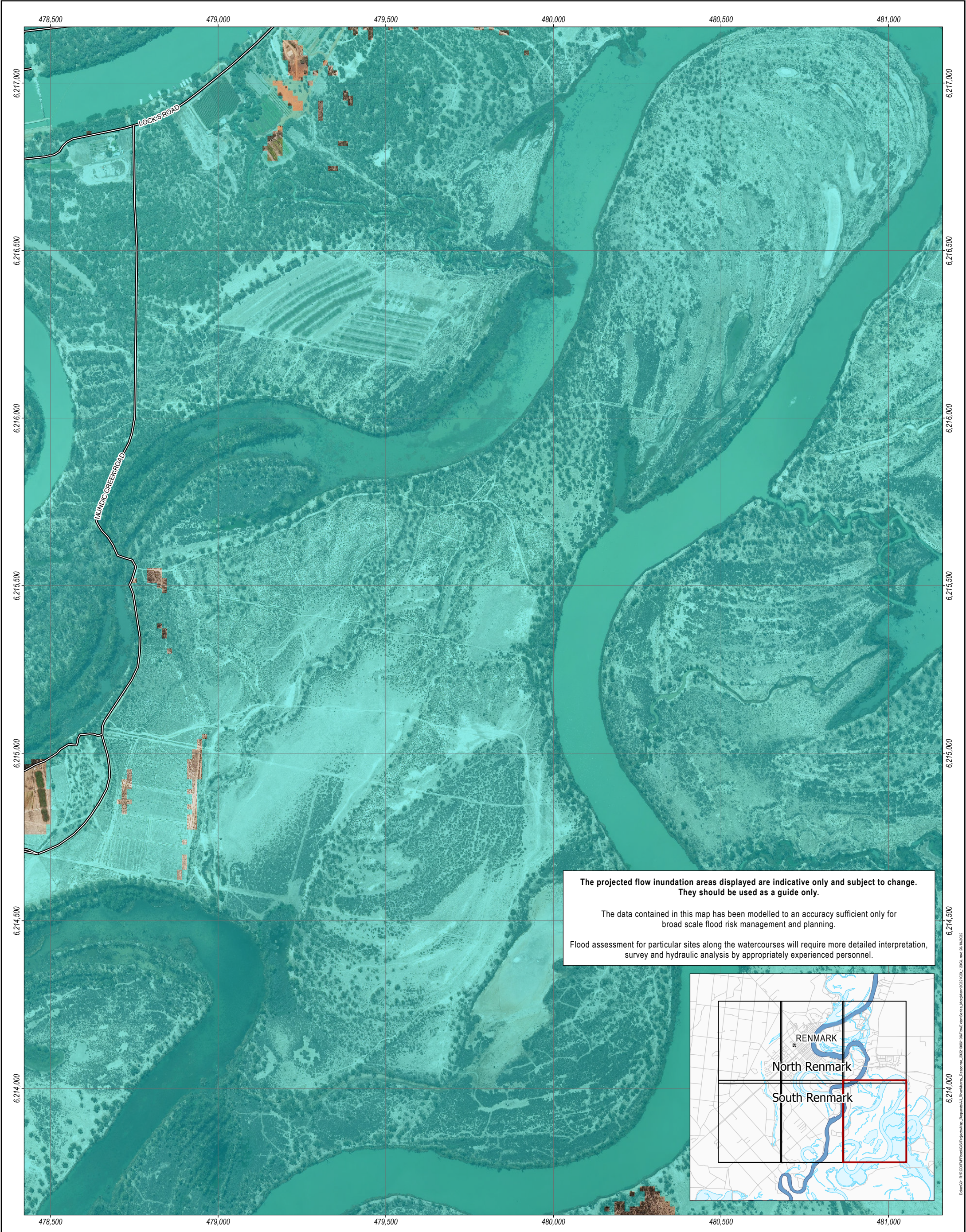
PROJECTED FLOW INUNDATION AREAS RENMARK, SOUTH AUSTRALIA



Note: Aerial photography acquired in March 2008.

DISCLAIMER: The Department for Environment and Water, its Employees and servants do not warrant or make any representation regarding the use, or results of use of the information contained herein as to its correctness, accuracy, currency or otherwise. The Department for Environment and Water, its employees and servants expressly disclaim all liability or responsibility to any person using the information or advice contained herein.

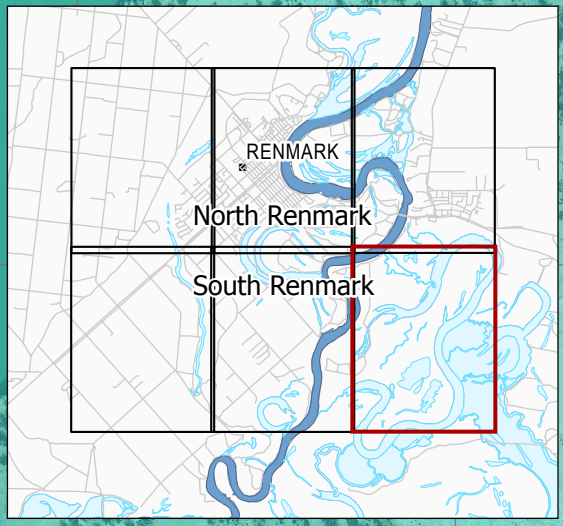
© Government of South Australia, through the Department for Environment and Water 2022.
 This work is Copyright. Apart from any use permitted under the Copyright Act 1968 (Cwlth), no part may be reproduced by any process without prior written permission obtained from the Department for Environment and Water. Requests and enquiries concerning reproduction and rights should be directed to the Chief Executive, Department for Environment and Water, GPO Box 2834, Adelaide SA 5001.



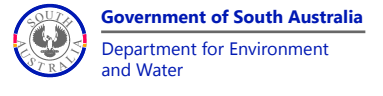
The projected flow inundation areas displayed are indicative only and subject to change. They should be used as a guide only.

The data contained in this map has been modelled to an accuracy sufficient only for broad scale flood risk management and planning.

Flood assessment for particular sites along the watercourses will require more detailed interpretation, survey and hydraulic analysis by appropriately experienced personnel.



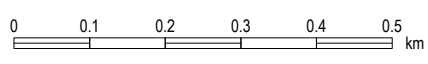
Produced By: Flood Management Team
 Department for Environment and Water
 Projection: Transverse Mercator - MGA Zone 54
 Datum: Geocentric Datum of Australia 2020
 Date: October 2022



Flow Rate

- 200,000 ML/day
- 1956 Flood Extent
- Road

PROJECTED FLOW INUNDATION AREAS
 RENMARK, SOUTH AUSTRALIA



Note: Aerial photography acquired in March 2008.

DISCLAIMER: The Department for Environment and Water, its Employees and servants do not warrant or make any representation regarding the use, or results of use of the information contained herein as to its correctness, accuracy, currency or otherwise. The Department for Environment and Water, its employees and servants expressly disclaim all liability or responsibility to any person using the information or advice contained herein.

© Government of South Australia, through the Department for Environment and Water 2022. This work is Copyright. Apart from any use permitted under the Copyright Act 1968 (Cwlth), no part may be reproduced by any process without prior written permission obtained from the Department for Environment and Water. Requests and enquiries concerning reproduction and rights should be directed to the Chief Executive, Department for Environment and Water, GPO Box 2834, Adelaide SA 5001.