

Mount Remarkable National Park

Management Plan Amendment 2013



**Government
of South Australia**

Department of Environment,
Water and Natural Resources



Minister's Foreword

Mount Remarkable National Park is one of the most popular destinations within the Flinders Ranges. The dramatic gorges and diverse range of wildlife present spectacular photographic opportunities. Visitors can partake in activities such as bushwalking, camping and picnicking throughout the year.

The *Mount Remarkable National Park Management Plan Amendment 2013* was developed to complement the existing park management plan, enhance the existing visitor experience and encourage further opportunities for visitors to enjoy this important park.

I want to thank everyone who contributed to the development of this amendment by providing feedback and engaging in the process. I am grateful for their willingness to provide input and contribute to the management of this significant park. I now formally adopt the Mount Remarkable Management Plan Amendment under section 38 of the *National Parks and Wildlife Act 1972*.



The Hon Ian Hunter MLC
Minister for Sustainability, Environment and Conservation

This management plan amendment was prepared pursuant to section 38 of the *National Parks and Wildlife Act 1972* and was adopted on 19 September 2013.

Amendments

Page 6, second paragraph

Delete:

Public access is by foot only. Vehicle access is prohibited, except for vehicles used for reserve management and emergency purposes. Visitor facilities are restricted to low impact developments including walking trails, track markers, information and interpretive signs, toilets (to limit impacts), bush camping sites and water tanks. Bushwalker camping is by permit and only at designated bush camping sites (refer to Section 8.3). Any further development or facilities required within this zone will be subject to a biological assessment.

Replace with:

Walkers are encouraged to use appropriate walking trails, shared use trails and management tracks. Following a risk assessment, specific trails and management tracks may be designated for low impact cycling, commercial tours or events. Visitor facilities are restricted to low impact developments including walking and cycling trails, track markers, information and interpretive signs, toilets (to limit impacts), bush camping sites and water tanks. Bush-walker camping is by permit and only at designated bush camping sites (refer to Section 8.3). Any further development or facilities required within this zone may be considered following an assessment of risks to conservation values and park visitors.



Page 22 & 23, Cycling

Delete:

Cycling

With the increasing popularity of mountain bike riding there has been an increasing demand for opportunities to ride bicycles on public lands and reserves. Mount Remarkable National Park is one location where there is some demand from visitors to ride bicycles on tracks within the reserve.

In Mount Remarkable National Park cycling is only permitted on public roads, vehicle-based camping areas and day visitor areas. Cycling is prohibited on walking trails and management access roads. There is potential for significant risk and conflict when walking tracks are shared by mountain bikers. Short sighting distances, steep slopes, narrow tracks and speed can create a situation of danger for riders, walkers and staff undertaking management tasks in vehicles.

To address these problems DEH will consult with the cycling community and the Office for Recreation and Sport to identify opportunities for recreational cycling through the park. This will also facilitate the creation of appropriate links to regional cycling trails.

Objectives

Safe, appropriate and environmentally sustainable access is maintained for park visitors and management purposes.

Strategies

- Maintain existing vehicle access for park visitors, management and emergency purposes.
- Provide walking trails that cater for a range of interest and fitness levels, allowing visitors to explore the natural and cultural assets of the park, without adversely impacting sensitive areas.
- Maintain and upgrade the network of walking trails with the aim to improve visitor safety, soil erosion and maintenance requirements. Where necessary, re-route or extend walking trails and where feasible integrate with regional trail networks to improve visitor access and enjoyment.
- Where appropriate, provide basic accommodation facilities for users of the Heysen Trail.
- Allow cycling on public access roads, vehicle based camping and day visitor areas only.
- In consultation with relevant stakeholders, continue to assess the demand for cycling in the park and where visitor demand and policy permit, identify opportunities for cycling in the park and investigate options for links where regional cycling trails occur.
- Provide appropriate information signage to assist with safety and navigation consistent with agency standards.



Replace with:

Cycling

With the increasing popularity of mountain bike riding there has been an increasing demand for opportunities to ride bicycles on public lands and reserves. Mount Remarkable National Park is one location where there is some demand from visitors to ride bicycles on tracks within the reserve.

Cycling in Mount Remarkable National Park is allowed on public roads, vehicle-based camping areas, day visitor areas, designated trails and designated management tracks. Careful planning, including an assessment of risks will ensure that trails and management tracks designated for cycling are suitable for this purpose. The construction of any new trails will be focused on previously disturbed areas within the Warren Bonython Link, former Willowie Forest Reserve and the area between the Mambray Creek and Old Baroota camping areas (figure 4).

Cooperative planning between government, the cycling community, park neighbours, the District Council of Mount Remarkable and other stakeholders will ensure that cycling on designated trails and management tracks has a minimal impact on park values, is appealing, and safe. This will also ensure that cycling trails link to regional infrastructure.

Objectives

Safe, appropriate and environmentally sustainable access is maintained for park visitors and management purposes.

Strategies

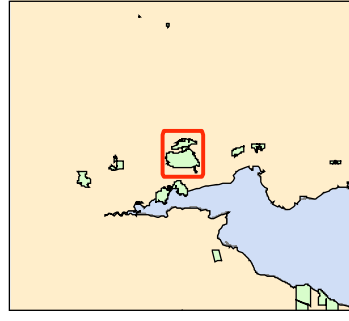
- Maintain existing motor vehicle access for park visitors, management and emergency purposes.
- Provide trails that cater for a range of interest and fitness levels, allowing visitors to explore the natural and cultural assets of the park, without adversely impacting sensitive areas.
- Maintain and upgrade the network of trails with the aim to improve visitor safety, prevent soil erosion and minimise maintenance requirements. Where necessary, re-route or extend trails and where feasible integrate with regional trail networks to improve visitor access and enjoyment.
- Where appropriate, provide basic accommodation facilities for users of the Heysen Trail.
- Following an assessment of risk the following areas may be designated for cycling:
 - existing tracks and trails,
 - new trails within the Warren Bonython Link,
 - new trails within the former Willowie Forest Reserve, and
 - new trails in the area between the Mambray Creek and Old Baroota camping areas.
- Monitor visitor access and implement strategies as appropriate to prevent impacts on park values.
- Provide appropriate information and signage to assist with environmental education, visitor awareness and safety.
- Consider the approval of low impact organised recreational events on a case-by-case basis.

Figure 4

Mt Remarkable National Park

Cycling Areas

- Legend**
- Mt Remarkable NP
 - Cycling Areas
- Surface**
- Sealed Roads
 - Unsealed Roads

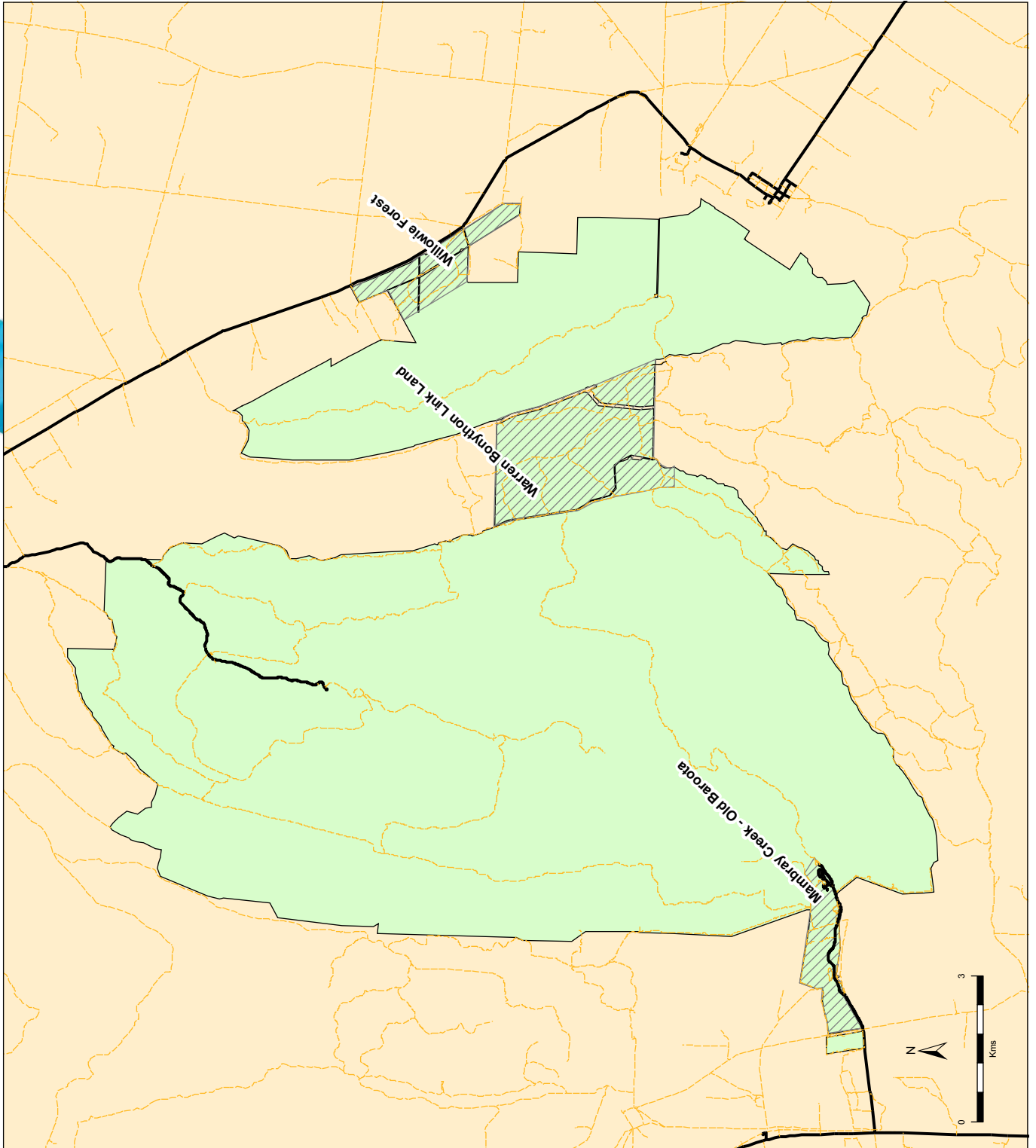


Produced by Department of Environment, Water and Natural Resources

Compiled 16 August 2013
Projection Lambert Conformal Conic
Datum Geocentric Datum of Australia, 1994

© Copyright Department for Environment and Heritage 2009.
 All rights reserved. No part of this publication may be reproduced, stored in a retrieval system, or transmitted, in any form or by any means, electronic, mechanical, photocopying, recording, or by any information storage or retrieval system, without the prior written permission must be sought from the Department.

Although every effort has been made to ensure the accuracy of the information displayed, the Department of Environment and Heritage does not accept any liability for any errors or omissions, or implied, that the information displayed is accurate or fit for any purpose and expressly disclaims a liability for loss or damage arising from reliance upon the information displayed.



Permissive Licence

©State of South Australia through the Department of Environment, Water and Natural Resources. Apart from fair dealings and other uses permitted by the Copyright Act 1968 (Cth), no part of this publication may be reproduced, published, communicated, transmitted, modified or commercialised without the prior written approval of the Department of Environment, Water and Natural Resources.

Written requests for permission should be addressed to: Communications and Community Engagement Branch, Department of Environment, Water and Natural Resources GPO Box 1047 Adelaide SA 5001.

Disclaimer

While reasonable efforts have been made to ensure the contents of this publication are factually correct, the Department of Environment, Water and Natural Resources makes no representations and accepts no responsibility for the accuracy, completeness or fitness for any particular purpose of the contents, and shall not be liable for any loss or damage that may be occasioned directly or indirectly through the use of or reliance on the contents of this publication. Reference to any company, product or service in this publication should not be taken as a Departmental endorsement of the company, product or service.

© Department of Environment, Water and Natural Resources | FIS92370 | September 2013



**Government
of South Australia**

Department of Environment,
Water and Natural Resources