

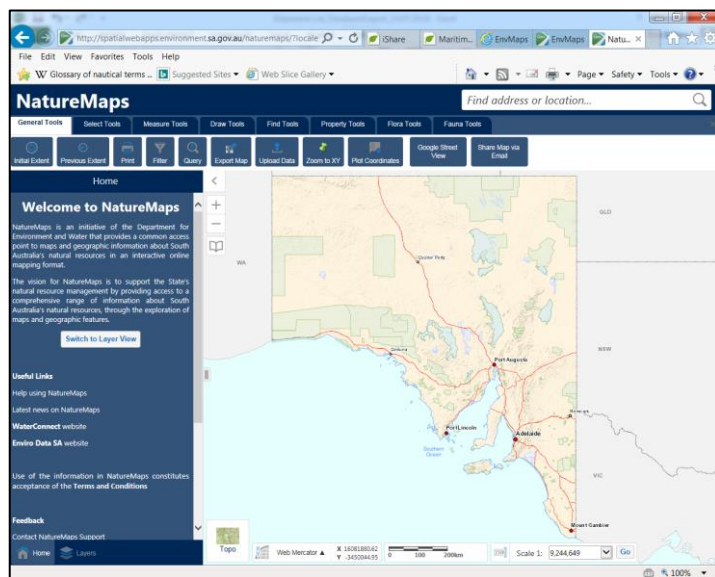
Viewing Shipwreck Data in NatureMaps

Reference Guide

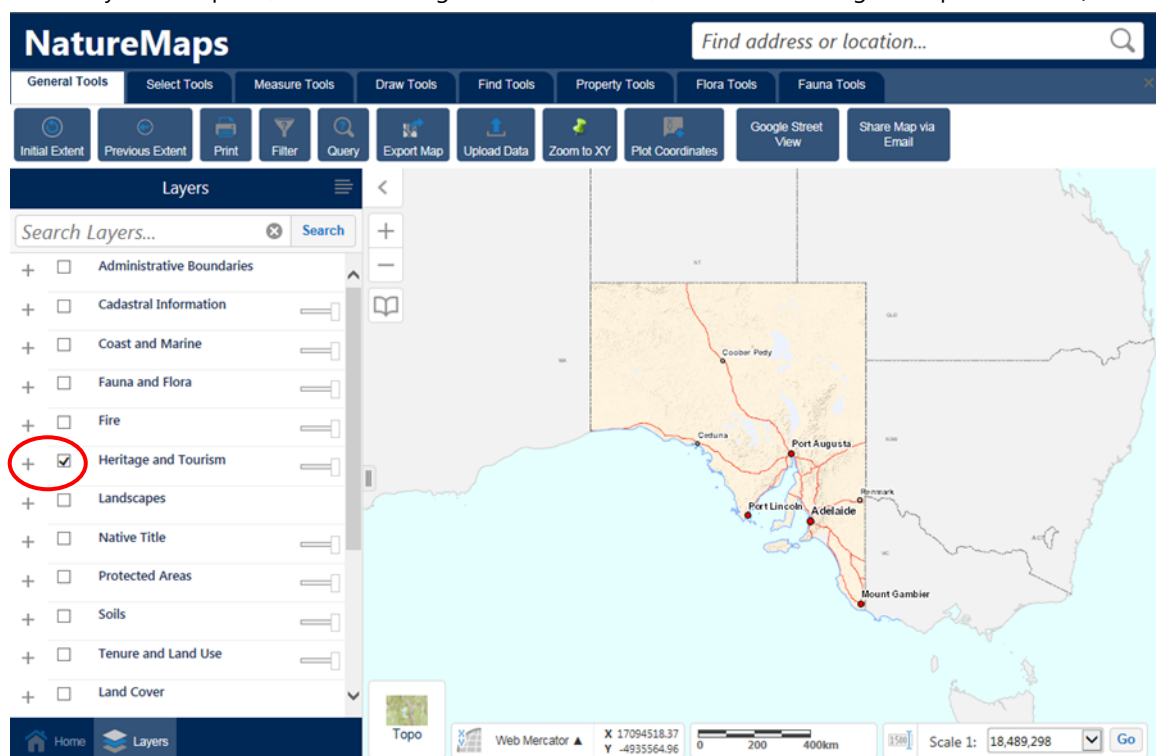


Viewing the Shipwreck Layer

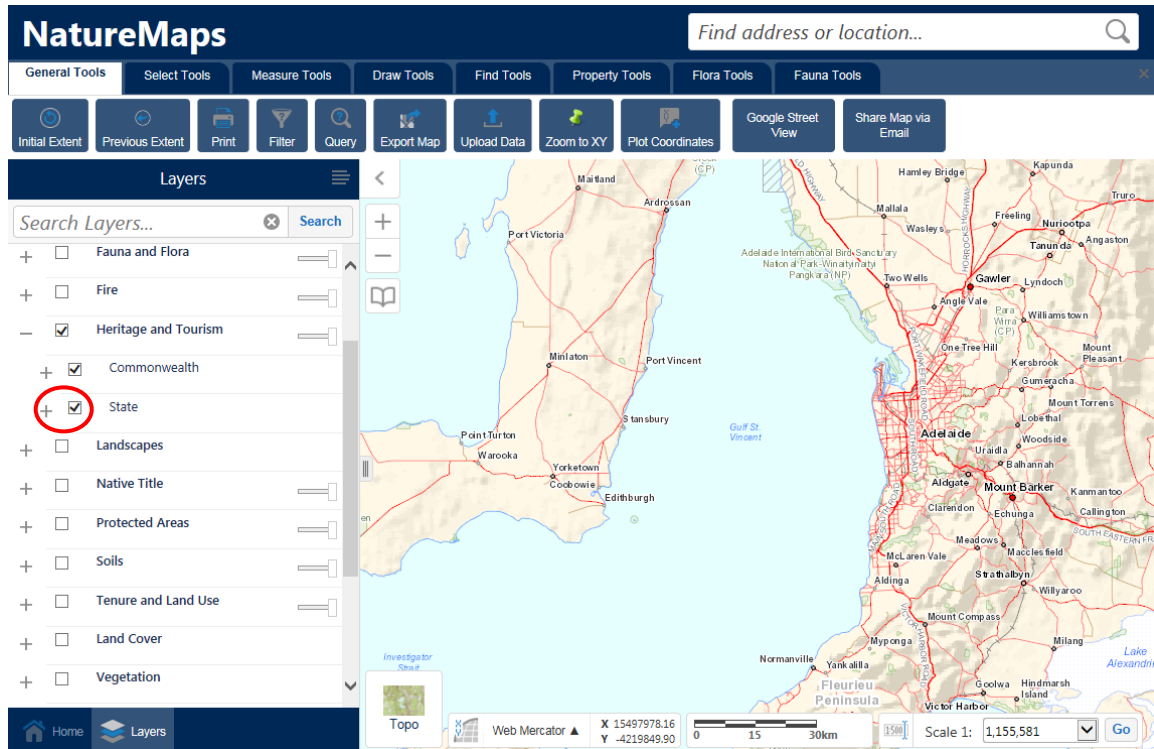
1. To access NatureMaps, open your web browser and enter:
<http://spatialwebapps.environment.sa.gov.au/naturemaps/?locale=en-us&viewer=naturemaps>
2. On the 'Welcome' side-panel, click '**Switch to Layer View**' (see below).



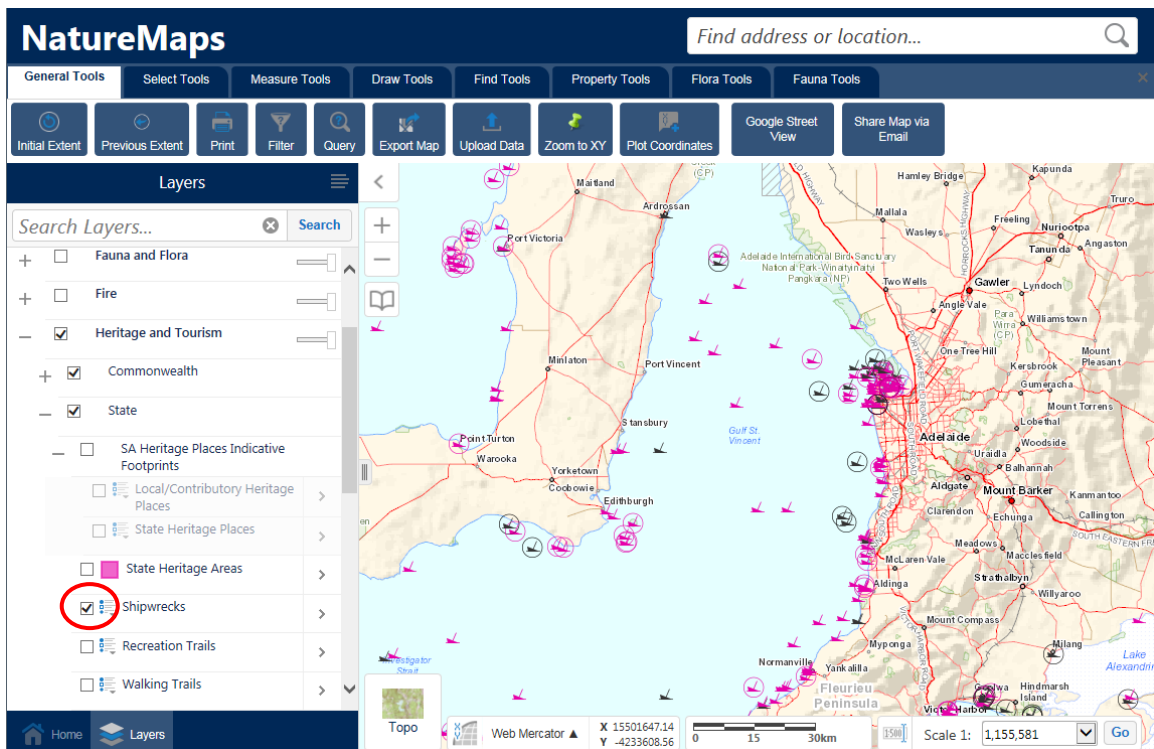
3. In the 'Layers' side-panel, tick the 'Heritage and Tourism' box, and click the '+' sign to expand the list (see below).



4. Tick the 'State' box and click the '+' sign to expand the list (see below)



5. Tick the 'Shipwrecks' box (see below)



This will show the locations or possible locations of all recorded shipwrecks in South Australia. There are four icons used depending on whether the site has been physically found or not, and whether the site is protected or not.

These icons are as follows:

- Pink = 'Protected'
- Black = 'Not Protected'

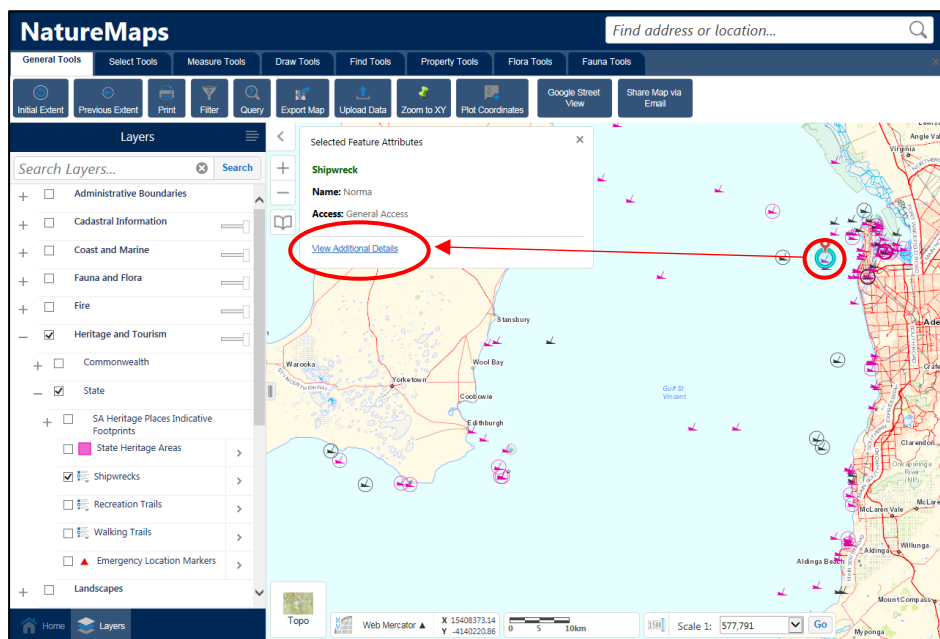
- Circled = 'Found'
- Uncircled = 'Not Found'

So for a site that is an historic shipwreck (i.e. protected) and has been found and the physical location known, the icon will be pink and circled.

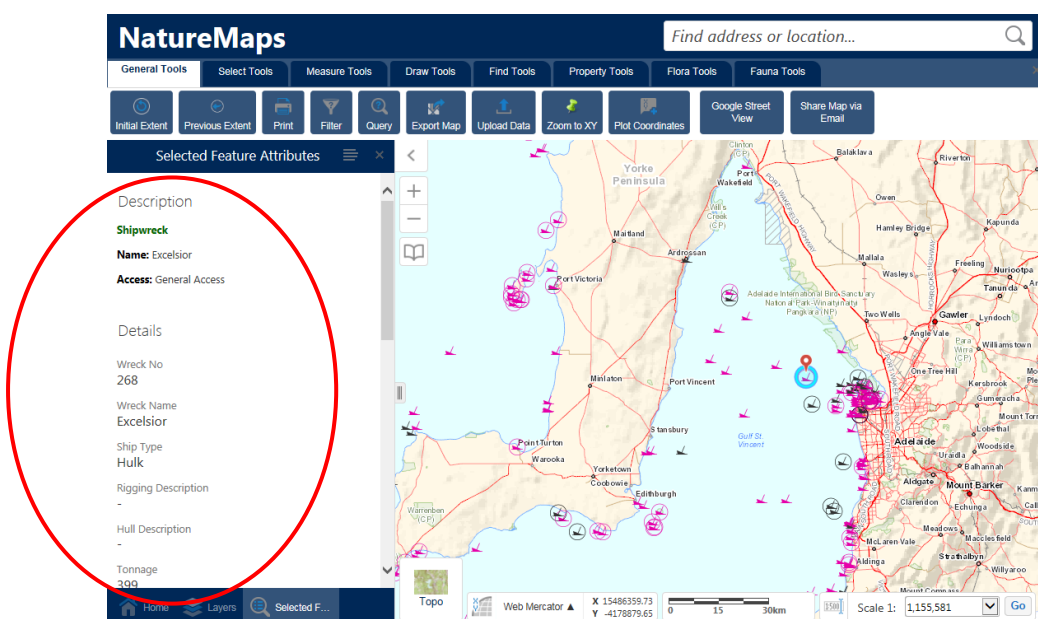
Viewing Wreck Site Information

You can also access a limited amount of database information in NatureMaps (note: it does not provide all information from the database, only selected data. For additional info you will have to access the database itself on a different website.

- Click on a relevant shipwreck icon. The icon will be circled in blue and a 'Selected features Attributes' box will appear in the top left corner of the map. For shipwreck information, click the 'View Additional Details' link.



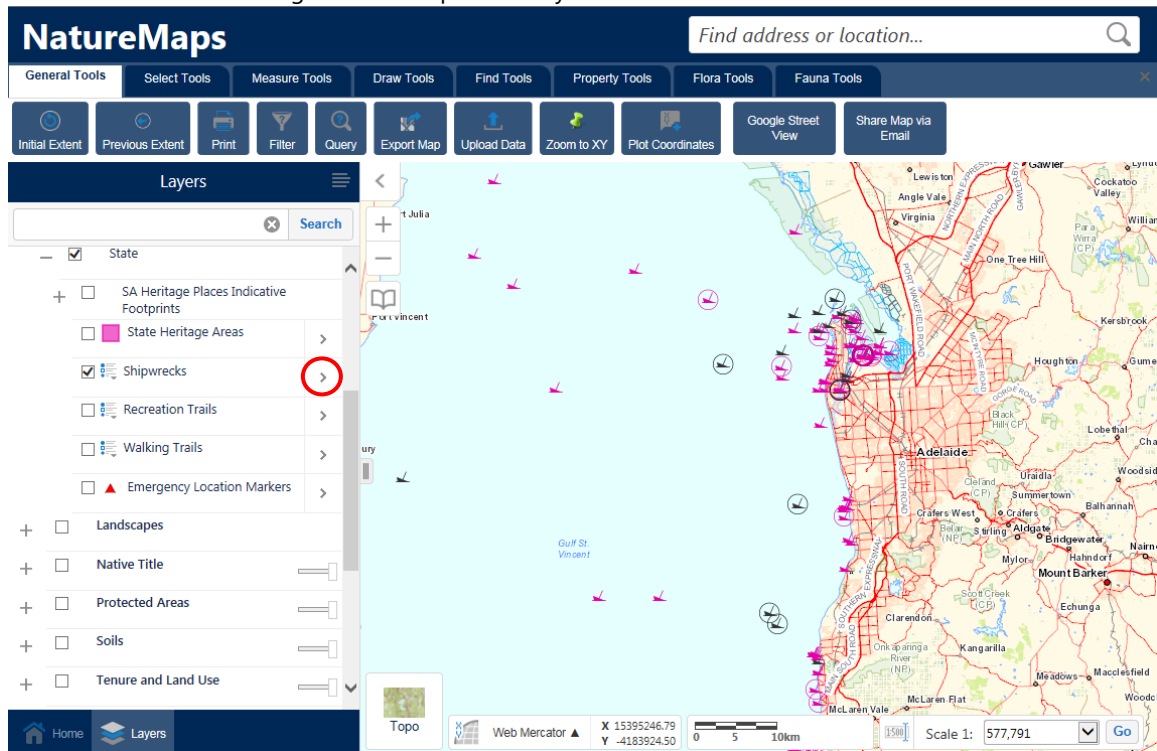
- Selected database fields will appear in the side panel.



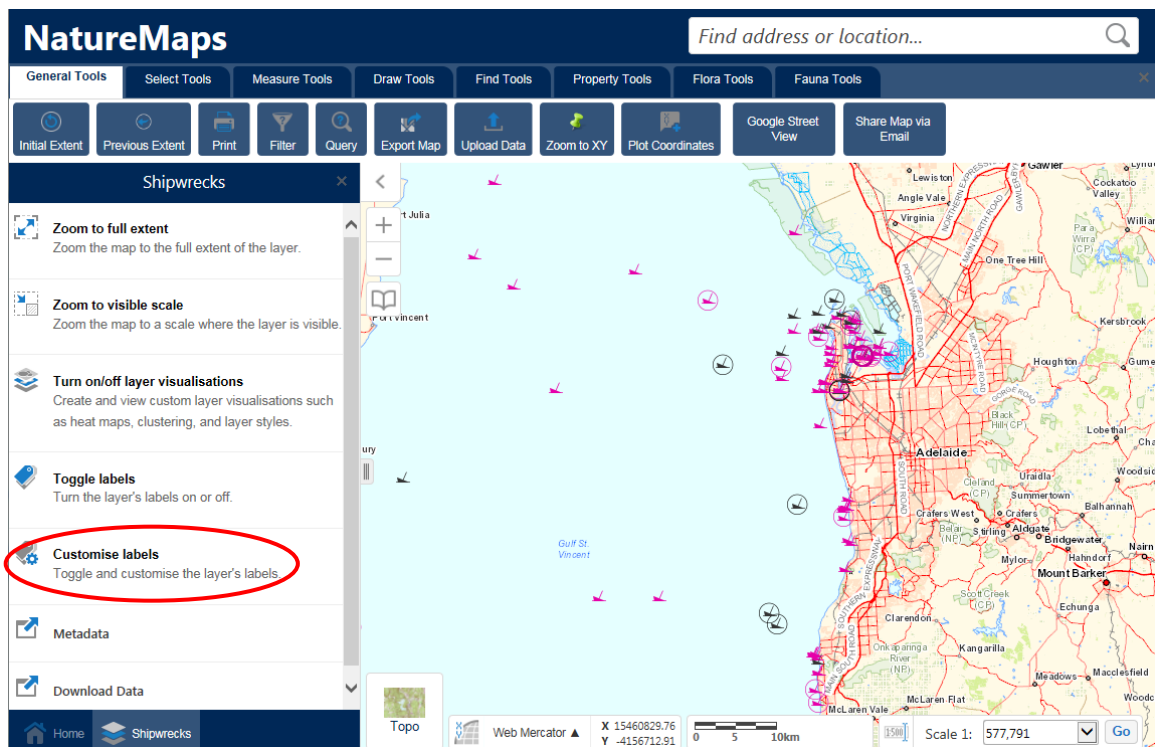
Adding Labels

You can also add labels to your maps, e.g. show the wreck name so that you can see what each wreck is at a glance:

- Click on the arrow to the right of the 'Shipwrecks' layer file



- Click on the 'Customise labels' field.



-
- The screenshot displays the NatureMaps application interface. At the top, a dark blue header contains the 'NatureMaps' logo on the left and a search bar with the placeholder text 'Find address or location...' on the right. Below the header is a horizontal toolbar with various tool buttons: 'General Tools', 'Select Tools', 'Measure Tools', 'Draw Tools', 'Find Tools', 'Property Tools', 'Flora Tools', and 'Fauna Tools'. A secondary row of buttons includes 'Initial Extent', 'Previous Extent', 'Print', 'Filter', 'Query', 'Export Map', 'Upload Data', 'Zoom to XY', 'Plot Coordinates', 'Google Street View', and 'Share Map via Email'.
- The main interface is divided into a left sidebar and a central map area. The sidebar features a 'Shipwrecks' layer configuration panel. This panel has a title bar with a close button. It contains several settings:
 - ☒ Show Labels
 - A 'Field' dropdown menu with 'Wreck Name' selected (this dropdown is circled in red).
 - A 'Color' dropdown menu with a black color swatch selected.
 - A 'Font' dropdown menu with 'Calibri' selected.
 - Styling options: ☒ Bold, ☒ Italic, and ☐ Underline.
 - A 'Font Size' slider set to 10 pt.
 - A 'Label Placement' dropdown menu with 'above-left' selected.
 A note at the bottom of the sidebar states: 'The configured label styles for Shipwrecks cannot be edited from this panel. Customising the label styles replaces the existing formatting and creates new styles.' At the bottom of the sidebar are four buttons: 'Apply', 'Done', 'Reset to Default', and 'Cancel'.
- The central map area shows a map of the Adelaide region in South Australia. Numerous shipwreck locations are marked with purple pin icons. The map includes geographical features like the Gulf St Vincent, Adelaide city, and surrounding towns. A scale bar at the bottom indicates 0, 5, and 10 km. The bottom status bar shows the map is in 'Web Mercator' projection, with coordinates X: 15405642.23 and Y: -4185300.36, and a scale of 1:577,791.

- [illegible]