

# Flora of South Australia

5th Edition



Department for  
Environment and  
Water



Government  
of South Australia

## FLORA OF SOUTH AUSTRALIA FAMILY LIST

South Australia is home to over 4800 taxa of vascular plants in 166 plant families. In this list, **bold** indicates that a plant family has been published, this is followed by the version number and the year of publication. The family sequence largely follows *Mabberley's Plant Book* (2009) and the *Australian Plant Census* ([www.anbg.gov.au/chab/apc](http://www.anbg.gov.au/chab/apc)). An asterisk indicates that only part of a family is available. All treatments have undergone an extensive reviewing and editing process.

Lycopodiaceae	<b>Centrolepidaceae</b> . . . . . 2.2013	<b>Ulmaceae</b> . . . . . 1.2016
Isoetaceae	Poaceae (Gramineae)	<b>Cannabaceae</b> . . . . . 1.2016
Selaginellaceae	<b>Commelinaceae</b> . . . . . 2.2013	Moraceae
Psilotaceae	Pontederiaceae	Urticaceae
Ophioglossaceae	Haemodoraceae	<b>Cucurbitaceae</b> . . . . . 1.2012
Osmundaceae	<b>Berberidaceae</b> . . . . . 2.2013	Fagaceae
Gleicheniaceae	<b>Ranunculaceae</b> . . . . . 2.2013	Betulaceae
Schizaeaceae	<b>Papaveraceae*</b> . . . . . 2.2013	Casuarinaceae
Marsileaceae	Proteaceae	<b>Juglandaceae</b> . . . . . 1.2011
Salviniaceae	<b>Gunneraceae</b> . . . . . 1.2011	Tropaeolaceae
Cyatheaceae	Dilleniaceae	Gyrostemonaceae
Dicksoniaceae	<b>Droseraceae</b> . . . . . 1.2011	Resedaceae
Lindsaeaceae	<b>Tamaricaceae</b> . . . . . 1.2012	Capparaceae
Dennstaedtiaceae	Frankeniaceae	Cleomaceae
Pteridaceae	Plumbaginaceae	<b>Brassicaceae (Cruciferae)*</b> 1.2019
Aspleniaceae	Polygonaceae	Malvaceae
Thelypteridaceae	Caryophyllaceae	Cistaceae
Blechnaceae	<b>Amarathaceae</b> . . . . . 2.2014	Thymelaeaceae
Dryopteridaceae	<b>Chenopodiaceae</b> . . . . . 1.2013	Sapindaceae
Pinaceae	Molluginaceae	Anacardiaceae
Cupressaceae	Portulacaceae	Simaroubaceae
Nymphaeaceae	Cactaceae	Meliaceae
<b>Hydatellaceae</b> . . . . . 1.2011	Basellaceae	Rutaceae
Lauraceae	Aizoaceae	Nitrariaceae
Ceratophyllaceae	Phytolaccaceae	Polemoniaceae
Araceae	Nyctaginaceae	Primulaceae
Alismataceae	Olacaceae	Ericaceae
Hydrocharitaceae	<b>Santalaceae</b> . . . . . 1.2012	Boraginaceae
Aponogetonaceae	<b>Loranthaceae</b> . . . . . 1.2013	Rubiaceae
Juncaginaceae	Grossulariaceae	Gentianaceae
Posidoniaceae	Crassulaceae	<b>Loganiaceae</b> . . . . . 2.2013
Ruppiaceae	Haloragaceae	Apocynaceae
Cymodoceaceae	Vitaceae	Solanaceae
Potamogetonaceae	Melanthaceae	<b>Convolvulaceae</b> . . . . . 2.2014
Zosteraceae	Geraniaceae	Oleaceae
Alstroemeriaceae	Lythraceae	Scrophulariaceae
Colchicaceae	Onagraceae	Acanthaceae
Orchidaceae	<b>Myrtaceae*</b> . . . . . 1.2014	Pedaliaceae
Hypoxidaceae	Zygophyllaceae	Martyniaceae
Iridaceae	Celastraceae	Verbenaceae
Xanthorrhoeaceae	Salicaceae	Bignoniaceae
Asphodelaceae	Violaceae	Lamiaceae (Labiatae)
Hemerocallidaceae	<b>Passifloraceae</b> . . . . . 2.2013	Orobanchaceae
Agapanthaceae	Euphorbiaceae	Plantaginaceae
Amaryllidaceae	Phyllanthaceae	Lentibulariaceae
Alliaceae	<b>Picrodendraceae</b> . . . . . 1.2011	Aquifoliaceae
Asparagaceae	Hypericaceae	Araliaceae
Dasypogonaceae	Linaceae	Apiaceae (Umbelliferae)
Arecaceae (Palmae)	Elatinaceae	Pittosporaceae
Typhaceae	Oxalidaceae	Caprifoliaceae
<b>Xyridaceae</b> . . . . . 1.2011	Cunoniaceae	Campanulaceae
Eriocaulaceae	<b>Elaeocarpaceae</b> . . . . . 1.2011	Stylidiaceae
Juncaceae	<b>Fabaceae (Leguminosae)*</b> 2.2015	Menyanthaceae
Cyperaceae	Polygalaceae	Goodeniaceae
Restionaceae	Rosaceae	<b>Asteraceae (Compositae)*</b> 1.2014
	Rhamnaceae	



## EDITORIAL COMMITTEE CONTRIBUTORS

Robyn M. Barker  
Peter Canty  
John P. Jessop (until 2015)  
Jürgen Kellermann (Editor)  
Peter J. Lang (Photographs)  
Andrew J. Lowe (until 2012)  
Hellmut R. Toelken  
Michelle Waycott (Chief Botanist)

## EDITORIAL ASSISTANCE

Barbara Bansemer  
Samantha M. Rothe  
Lisa J. Waters

## PROGRAMMING & TWIKI DEVELOPMENT

W.R. (Bill) Barker  
Rex Croft  
Paul Jeromel

## ONLINE & PRINT

Treatments and information on the  
*Flora of South Australia* project are  
available at: [flora.sa.gov.au/ed5](http://flora.sa.gov.au/ed5)

Very limited numbers of hardcopies are  
produced and for sale; please contact  
the Editor for details.

## CONTACT

Dr Jürgen Kellermann  
Editor, *Flora of South Australia* (ed. 5)  
State Herbarium of South Australia  
GPO Box 1047  
Adelaide SA 5001  
Australia  
email: [juergen.kellermann@sa.gov.au](mailto:juergen.kellermann@sa.gov.au)

## COPYRIGHT

© Department for Environment and  
Water, Government of South Australia.  
Copyright of illustrations might reside  
with other institutions or individuals.  
Please enquire for details.

## ADDITIONAL FUNDING

The Board of the Botanic Gardens &  
State Herbarium, Adelaide.  
The Australian Biological Resources  
Study (ABRS), gave permission to  
reproduce illustrations and co-funded  
some new line-drawings.

Robyn M. Barker  
A.R. (Tony) Bean  
Bryan A. Barlow  
Chris J. Brodie  
R.J. (Bob) Chinnock  
Barry J. Conn  
John G. Conran  
David A. Cooke  
Andrew I. Craigie  
Dean D. Cunningham  
Helen J. Hewson<sup>†</sup>  
S. (Avi) Holzapfel  
Jeff A. Jeanes  
John P. Jessop  
Robert W. Johnson  
Terena R. Lally  
Peter J. Lang  
Brendan J. Lepschi  
Jürgen Kellermann  
Neville G. Marchant  
Dean Nicolle  
Hannah McPherson  
Cathy H. Miller  
Louisa Murray  
Jo Palmer  
Neville Scarlett  
Tracey M. Spokes  
Ian R.H. Telford  
Ian R. Thompson  
Neville G. Walsh  
J.Z. Weber<sup>†</sup>  
Paul G. Wilson  
Peter G. Wilson

## ARTISTS

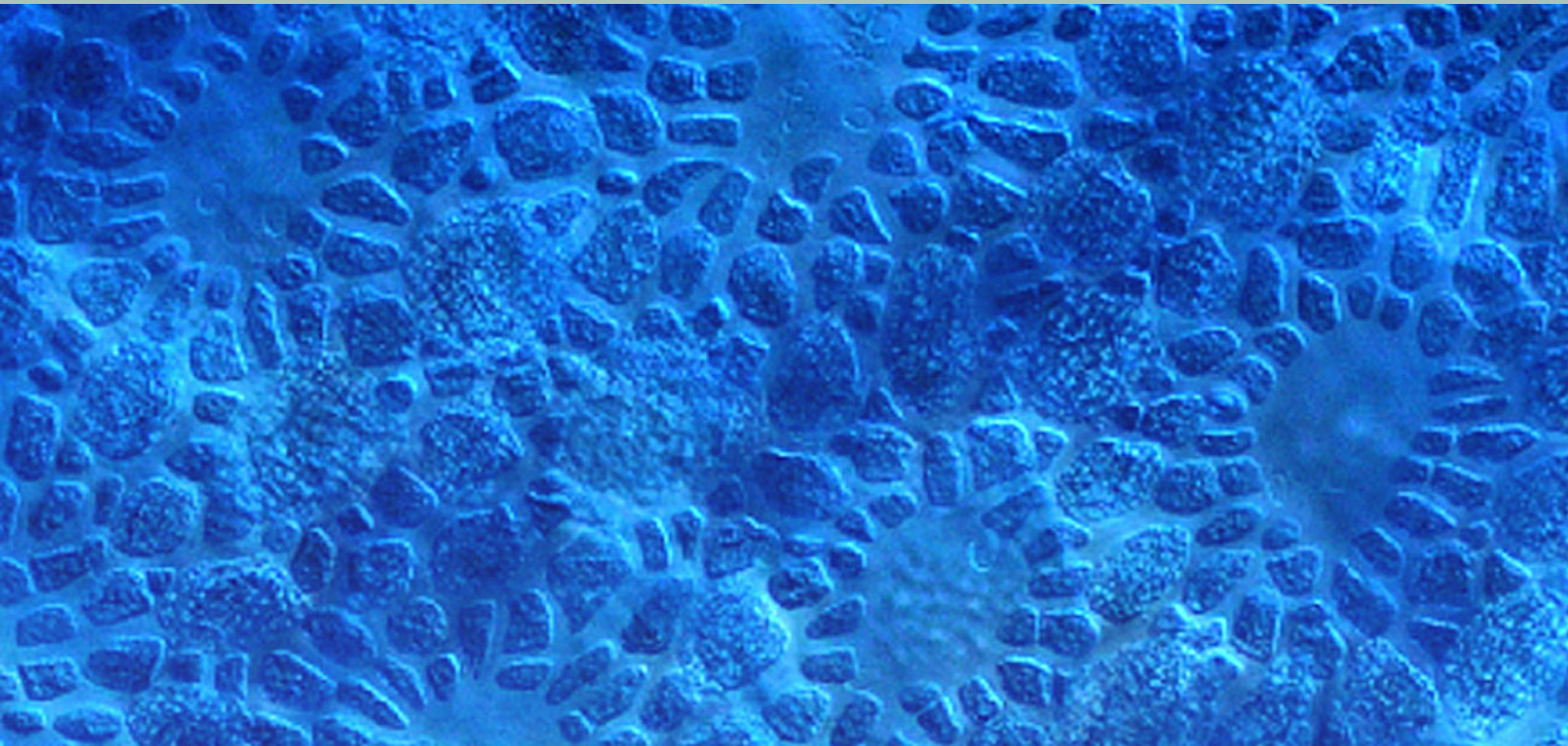
Kath M. Alcock  
Anita Barley  
Gilbert R.M. Dashorst  
Enid Mayfield  
Lisa J. Waters

Many line-drawings were re-used from  
the 4th edition of *Flora of South Australia*  
(1986) or reproduced from other  
publications. See Figure captions for  
details.

## PHOTOGRAPHERS

Phil J. Ainsley  
Max Antheunisse  
David A. Armstrong  
R.J. (Bob) Bates  
Kirsty Bevan  
Bokske  
Chris J. Brodie  
M.I.H. Brooker & D.A. Kleinig  
Julie Burgher  
Peter D. Canty  
Annabel L. & Geoff N. Carle  
Claire C. & Clive M. Chesson  
Colin S. Cichon  
John G. Conran  
Peter B. Copeley  
Russell Cumming

Steve Doyle  
Dan A. Duval  
John Eichler  
Murray Fagg  
Erik Fenderson  
J.M. Garg  
Jake S. Gillen  
Kate L. Graham  
Adam Grubb  
Bernd Haynold  
Bryan T. Haywood  
Lee M. Heard  
Bill Higham  
Ian S. Hopton  
T.J. Horn  
Stefan Iefnaer  
Colin Jacobs  
Lorraine Jansen  
Trudie M. Jaques  
Nathan Johnson  
Judith M. Jones  
Jürgen Kellermann  
Sue D. Kenny  
Darrell N. Kraehenbuehl  
Julia Kruse  
Frank Kutsche  
Werner P. Kutsche  
Peter J. Lang  
Matt Lavin  
Mark Marathon  
Jacques Maréchal  
Kath Matthews  
Mauricio Mercadante  
B.J. McCallum  
J. McIntosh  
Denzel E. Murfet  
Nadjalalent  
Natrij  
Nick R. Neagle  
Jerzy Opiola  
Helen Owens  
David C. Paton  
Lydia J. Paton  
Paucabot  
Lorraine Phelan  
Katrina Pobke  
Christophe Quintin  
Rasbak  
A.C. (Tony) Robinson  
Tony Rodd  
Harry Rose  
Ron K. Sandercock  
Jenny Skinner  
Forest & Kim Starr  
Lucky Starr  
Allen M. Sundholm  
John Tann  
Tau'olunga  
Kevin R. Thiele  
Michael J. Thorpe  
Radio Tonreg  
Thayne Tuarson  
Bart Wursten  
Australian National Botanic Gardens  
Adelaide Botanic Gardens, Library  
S.A. Seed Conservation Centre



**Government  
of South Australia**

Board of the  
Botanic Gardens and  
State Herbarium



© State of South Australia through the Department for Environment and Water. You may copy, distribute, display, download and otherwise freely deal with this publication for any purpose subject to the conditions that you (1) attribute the Department as the copyright owner of this publication and (2) obtain the prior written consent of the Department if you wish to modify the work, offer the publication for sale, or otherwise use it or any part of it for a commercial purpose.

Disclaimer: While reasonable efforts have been made to ensure the contents of this publication are factually correct, the Department for Environment and Water makes no representations and accepts no responsibility for the accuracy, completeness or fitness for any particular purpose of the contents, and shall not be liable for any loss or damage that may be occasioned directly or indirectly through the use of or reliance on the contents of this publication.

Reference to any company, product or service in this publication should not be taken as a Departmental endorsement of the company, product or service.

© Department for Environment and Water | FIS 90986 | July 2019

Cover photograph: Helen Owens.