



**World
Wetlands Day**
2 February 2015

Wetlands for
our Future



Coorong, Lower Lakes & Murray Mouth Community Revegetation Project and Community Monitoring

Presented By: Regina Durbridge, Project Officer

Goolwa to Wellington Local Action Planning Association Inc.



Government of South Australia
Department of Environment,
Water and Natural Resources



Australian Government



The Community Revegetation project is proudly managed and delivered by the Goolwa to Wellington Local Action Planning Association Inc. as part of the South Australian Government's *Murray Futures* program, funded by the Australian Government.

Goolwa to Wellington LAP region



Community Revegetation Project Objectives



CLLMM Community Revegetation Sites 2010 - 2014

Legend

 2010-2014 Revegetation Areas



Author: Aaron Cheesman
Date: 15:17 28 Aug 2014

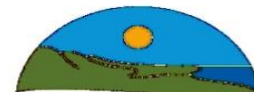
Coord System: GDA 1994 MGA Zone 54

Disclaimer:

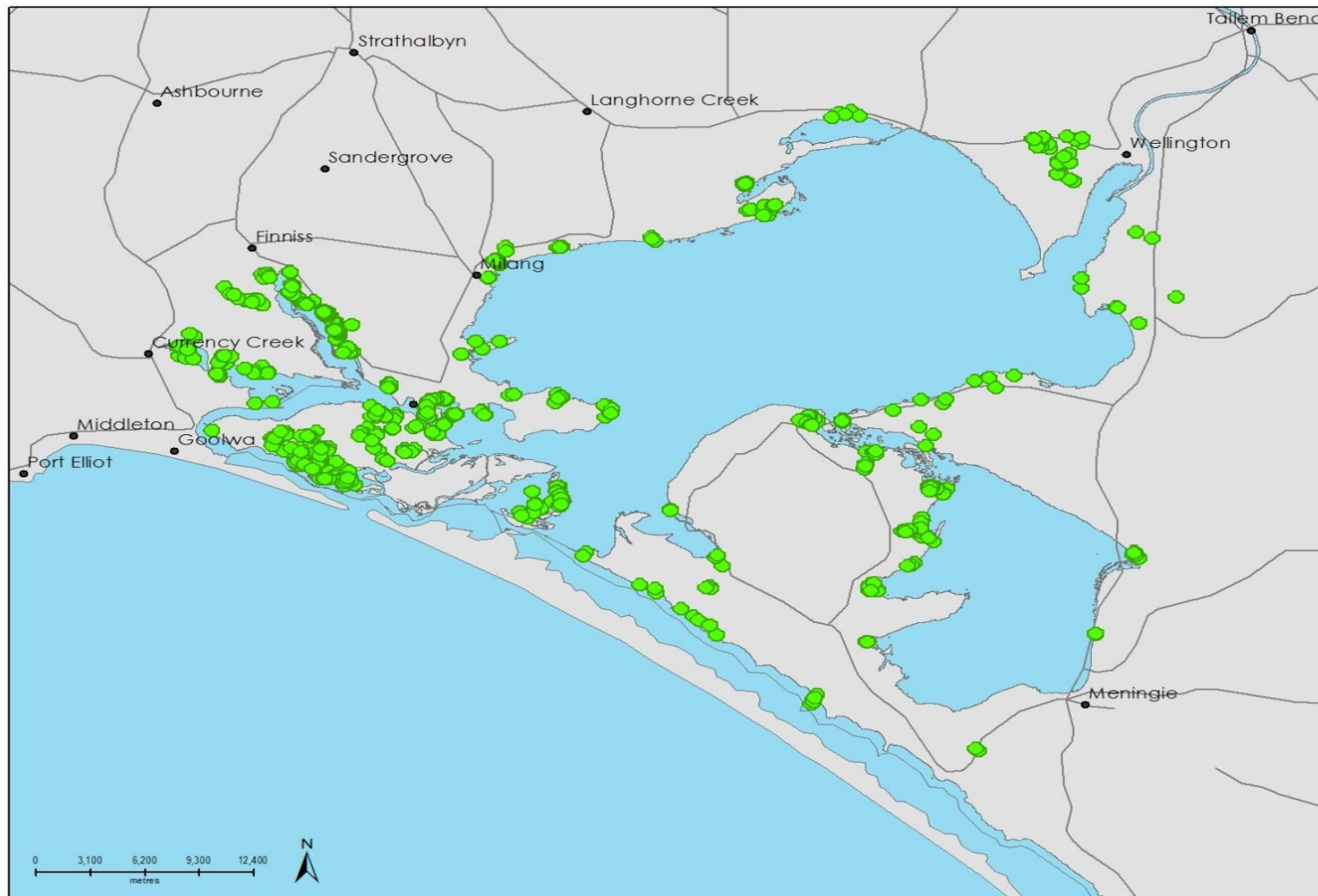
The Goolwa to Wellington Local Action Planning Association Inc. and its employees do not warrant or make any representation regarding the use, or results of the use, of the information contained herein as regards to its correctness, accuracy, reliability, currency or otherwise. The Goolwa to Wellington Local Action Planning Association Inc. and its employees expressly disclaim all liability or responsibility to any person using the information or advice contained in this document.

© Goolwa to Wellington LAP

This work is copyright. Unless permitted under the Copyright Act 1968 (Cwth), no part may be reproduced by any process without prior written permission from The Goolwa to Wellington Local Action Planning Association Inc. Requests and inquiries concerning reproduction and rights should be addressed to the Goolwa to Wellington LAP Association, Program Manager, PO Box 674, Strathalbyn, S.A., 5255



**GOOLWA TO WELLINGTON LOCAL
ACTION PLANNING ASSOCIATION INC**



0 3,100 6,200 9,300 12,400
metres



Community Nurseries Network



Clayton Bay Nursery



Milang Nursery



Meningie Nursery



Hindmarsh Island Nursery

Community Groups



Supported Groups



Football Clubs



Church Youth Groups



Hockey Clubs

Watkins Community Revegetation site, Tookayerta



Southern Emu wren

Project Achievements 2009-2014



Community Acid Sulfate Soil Monitoring



Community Vegetation Monitoring & Trials



Survivorship monitoring



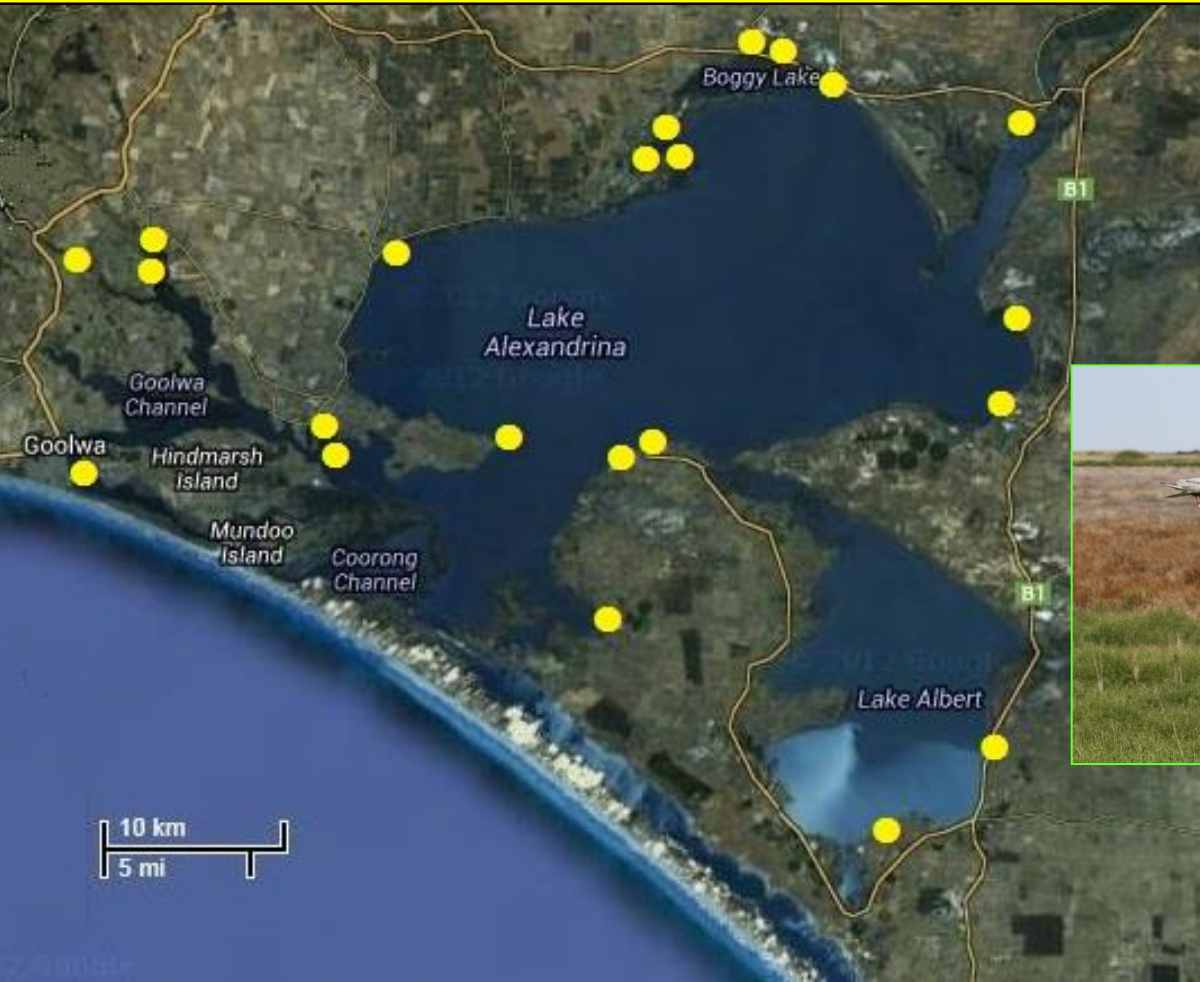
Revegetation monitoring



Sandy soil planting trial



Community Fixed Photo Point Monitoring



Community Frog Monitoring

Where are all the Southern Bell Frogs? Adopt a Frog Monitoring Site!



Natural Resources—SA Murray-Darling Basin and the Goolwa to Wellington Local Action Planning Association need your help!

The Vulnerable listed Southern Bell frog was only found at two sites during 2013 Frog Monitoring in the CLMM region compared with six sites in 2010. We are looking for community members and groups to Adopt a Frog Monitoring site/s for the 2014 Frog Monitoring Season. All it takes is a 5 minute recording of the frog species calling and completing a datasheet once a month from September through to January.

Frog monitoring loan kits will be available and a series of Frog monitoring workshops will be held in the region during September.

To register your interest please contact Regina Durbridge
0427 364 551 or email regina.durbridge@gwlap.org.au



Government of South Australia
Department of Environment,
Water and Natural Resources



Tolderol Environmental Watering Trial & Community Bird Monitoring



Government of South Australia

Department of Environment,
Water and Natural Resources



Environmental resilience and increased community capacity
=
Healthier environments and stronger communities



GOOLWA TO WELLINGTON LOCAL
ACTION PLANNING ASSOCIATION INC

Thank you