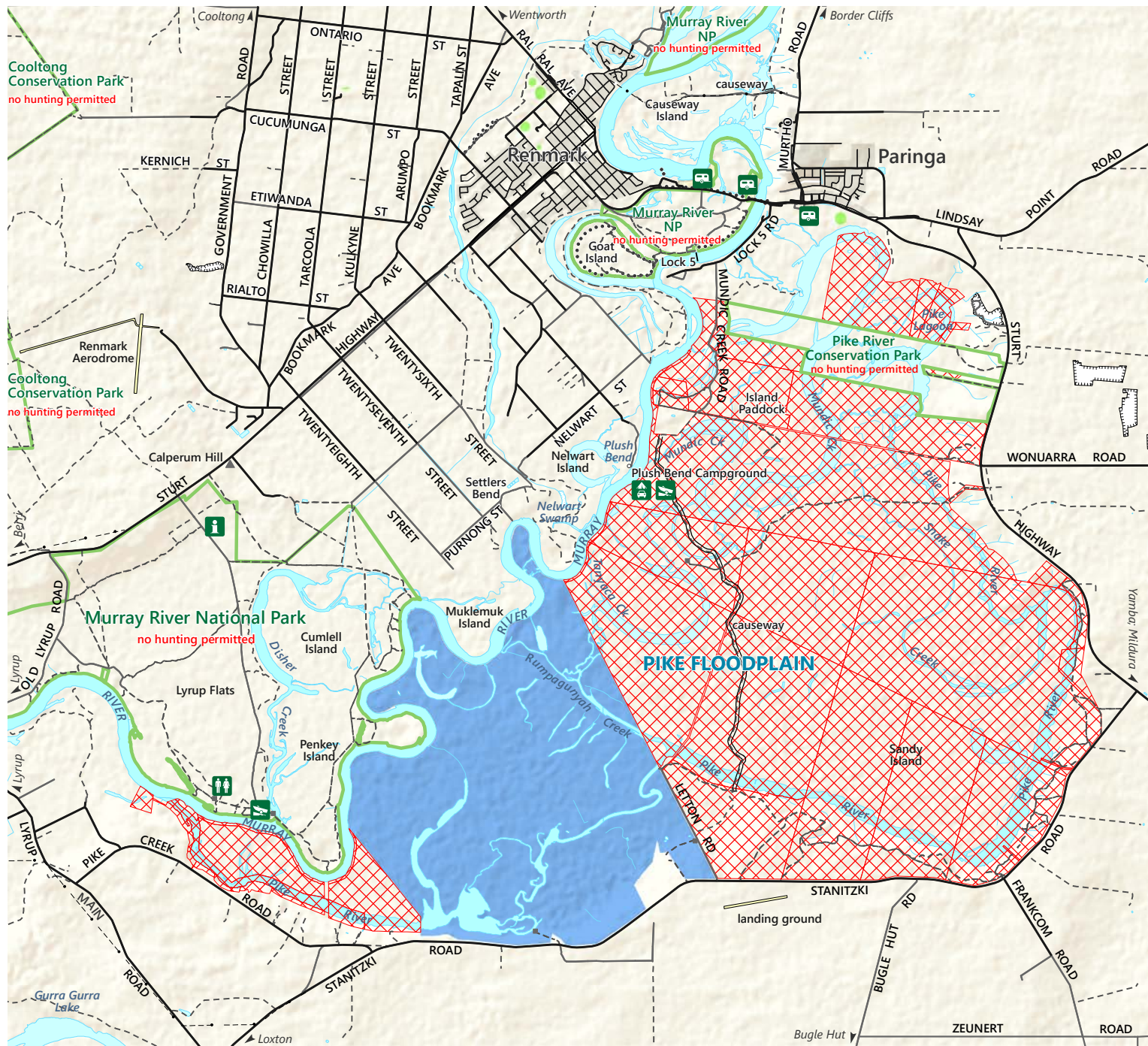


# Pike Floodplain

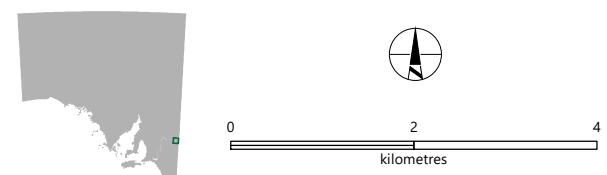
## Hunting Exclusion Zones 2025



- Pike Floodplain unalienated Crown land (hunting permitted during the 2025 open season)
- Pike Floodplain unalienated Crown land excluded from the 2025 Open Season (no hunting permitted)
- NPWSA Park boundary
- Build-up area

- Oval
- Sealed road
- Unsealed road
- Vehicle track
- Causeway
- Walking trail
- Hill
- Building
- Campground
- Boat ramp
- Information
- Toilets
- Caravan Park

Note: No open season hunting is permitted on National Park or Conservation Park. Hunting on private land requires written permission of the landholder.



This map is valid for the 2025 duck open season only. Areas excluded from open season hunting on this map may vary from year to year.

DEW does not guarantee that this map is error free. Use of the map is at the user's sole risk and the information contained on the map may be subject to change without notice. Cartography by DEW, Mapland - 2025

Visit [parks.sa.gov.au](http://parks.sa.gov.au)  
 Get the Avenza Maps app to use park maps on your phone.  
 For more information, contact:  
 Department for Environment and Water  
 E: [parks@sa.gov.au](mailto:parks@sa.gov.au)  
 P: 08 8207 7700