

IKARA-FLINDERS RANGES NATIONAL PARK

COMMERCIAL FILMING



Ngarlparlaru Yarta

Welcome to our land

The Ikara-Flinders Ranges National Park is part of the traditional lands of the Adnyamathanha people, who have a spiritual and cultural relationship with Country.

The Adnyamathanha people are deeply connected to Country, are acknowledged as the custodians of the region and their cultural heritage beliefs are still as important to the living Adnyamathanha people today.

The Adnyamathanha culture is a welcoming and sharing culture, extends to all park visitors.

The Adnyamathanha people encourage visitors to enjoy and experience Adnyamathanha land and culture and to respect the significance of this Country to the Traditional Owners.

The Ikara-Flinders Ranges National Park Co-management Board recognise the importance of film and photography have in attracting visitors to parks. This provides the opportunity to promote conservation and the Aboriginal and European heritage values of the Flinders Ranges.

Partnership Arrangements

The Ikara-Flinders Ranges National Park is managed by the Ikara-Flinders Ranges National Park Co-management Board, a body that includes representatives from the Adnyamathanha people and the Department for Environment and Water.

Our Board is responsible for managing the cultural and natural landscape, still known and understood by our Traditional Owners, in a way that also protects and conserves the park's outstanding natural and cultural features.

We work together to:

- Conserve the park's natural and cultural heritage, using both traditional and scientific knowledge to better manage the land.
- Respect the rights, interests and needs of the Traditional Owners and create social development and economic opportunities for Adnyamathanha families and communities
- Provide great experiences for visitors



Government of
South Australia



Commercial Licence

Any motion filming or still photography in parks and reserves for commercial purposes requires a filming/photography permit. Filming or photography is defined as “commercial” when the intention is to promote a product or service and/or achieve financial gain from the filming or photography.

In accordance with the *National Park and Wildlife Act 1972*, commercial activities in the Ikara-Flinders Ranges National Park must be licenced in accordance with DEW policy and procedures.

The use of Remote Piloted Aircraft (Drones) as part of capturing images will require approval. An assessment for the suitability for the use of aircraft will be undertaken as part of your application considering the risks for disturbance of wildlife and, other park users, the cultural sensitivity of the area and ability to comply with operating conditions set by the Civil Aviation Safety Authority.

Protection of Aboriginal heritage and culture

In accordance with the Co-management Agreement, there is a requirement for the State (which includes the Ikara-Flinders Ranges National Park Co-management Board) to consult with the Adnyamathanha Traditional Lands Association (ATLA), representing the Adnyamathanha people to determine if the activities will damage, disturb or interfere with an Aboriginal site, object or remains.

Accordingly, it is the role of DEW/Co-management Board to seek comment from ATLA before any filming or event occurs on the Park. This does not apply to the pre-approved locations as outlined below. Any other sites not listed will require consultation with ATLA.

Adnyamathanha people acknowledge the creation of significant places through Yura Muda (history stories). Interpretation of Aboriginal culture by a non-Adnyamathanha person requires approval from the Board. The Board must consult with ATLA, prior to granting approval for the filming application.

Co-management Obligations

The Ikara-Flinders Ranges National Park Co-management Board has approved the following standard conditions that must be included into all commercial filming applications:

- The Board strongly recommends building in a cultural awareness activity, in particular “Welcome to Country” (authorised Adnyamathanha person).
- The Board strongly recommends that filming organisers in the first instance, engage with the broader Adnyamathanha community to discuss being involved in all areas of filming (volunteer or employment basis).
- Promotional material for filming to acknowledge traditional owners and include a provision for cultural sensitivity.

About the Park

The Park comprises approximately 95,000 hectares and includes the Heysen Range, Brachina and Bunyerroo gorges and the breathtaking Wilpena Pound. The Park abounds with native wildlife, rich cultural heritage and impressive geological features. Tourists are drawn to the camping opportunities and a range of activities including bushwalking, bird watching, photography and cycling.



ICONIC PARK LOCATIONS

(with standing approval subject to application process)

Akurra Adnya (Arkaroo Rock)

Located off the main Wilpena Road

Akurra Adnya (Arkaroo Rock) is a significant Adnyamathanha painting site that depicts aspects of the Yura Muda (stories) for Ikara-Wilpena Pound.

According to the Yura Muda, powerful Creation serpents known as Akurra created many features of the Ikara-Flinders Ranges landscape. The bodies of two Akurra form the walls of Ikara-Wilpena Pound.

Akurra Adnya (Arkaroo Rock) is a significant cultural site for the Adnyamathanha people of the Flinders Ranges.



This hike goes to a rock shelter with rock paintings featuring ochre and charcoal images that depict the Yura Muda (Dreaming, or creation story) of Ikara (Wilpena Pound).

Enjoy spectacular views of the Chace Range at sunset. The rock paintings are best seen in morning light.



Government of
South Australia



IKARA (WILPENA POUND)

Located off the main Hawker to Blinman Road

Aerial shots of Ikara (Wilpena Pound) are permitted, subject to obtaining approvals necessary to use aircraft (including remote piloted aircraft – drones) in the park.

St Mary Peak (Ngarri Mudlanha)

The highest peak in Flinders Ranges.

It is a sacred place and the

Adnyamathanha people ask you to respect their law and, for your own wellbeing, that you do not climb the Peak. Land-based filming and photography of St Mary Peak is not permitted.



Yurlu Ngukandanha – The Track to Wilpena Pound

Yurlu (the Kingfisher) was traveling south from Kakarlpunha (Termination Hill) to Ikara for a ceremony. There were Akurra bila (two Dreamtime Serpents) also going south towards Ikara. The male Akurra told his mate to go to the southwest, while he went northeast to surround the people. Yurlu got to Mount Abrupt and looked into the Pound.

The two big serpents came up on either side of the ceremonial ground in whirlwinds. They caught and ate up all the people who were there except Yurlu and the two initiates – Marra Vardnapa (the new Vardnapa, or man in training) and Yakamburu (the new Wilyaru, or initiated man). The two initiates fled eastward, watched by the two Akurras. Ngarri Mudlanha (St Mary Peak) is the head of the female Akurra.

Within the Ikara (Wilpena Pound) Walking Trails

Views along the trails leading to and from the following lookouts

- **Tanderra Saddle**
- **Wangara Hill Lookout**
- **Mt Olhssen Bagge Lookout**

Access to these locations is via walking trails only (varying length and difficulty).

For more information refer to Bushwalking in the Ikara-Flinders Ranges National Park.

<https://www.parks.sa.gov.au/parks/ikara-flinders-ranges-national-park#see-and-do>



Wangara Hill Lookout



Government of
South Australia



CAZNEAUX TREE

Located off the main Hawker to Blinman Road

The Cazneaux Tree near Wilpena Pound in the Flinders Ranges is a solitary river red gum tree that came to fame in 1937. Australian photographer, Harold Cazneaux, captured the famous image of the tree and called it the "Spirit of Endurance" as testament to life in such an unforgiving environment.



Yura Mulka (Sacred Canyon)

Restricted Access

The ancient rock art in the Flinders Ranges dates back 38,000 years and is an important cultural and spiritual site to the Adnyamathanha people.

Yura Mulka (Sacred Canyon) is a small chasm where ancient Aboriginal rock engravings representing animal tracks, people, waterholes and other symbols are found on sandstone walls.

Due to cultural sensitivity of the site, public access which includes commercial activities is only permitted through guided tours led by Adnyamathanha people.

Join an Adnyamathanha guided tour as they provide you with a rich cultural experience as your guide interprets the engravings, the country and Adnyamathanha culture.

Adnyamathanha guided tours of Yura Mulka (Sacred Canyon) can be booked through a Commercial Tourism Operator:

- Wilpena Pound Resort <https://www.wilpenapound.com.au> or
- Wadna <https://wadna.com.au> (closed over summer months)



The engravings



Rockhole or spring



Kangaroo



Emu



Windbreak



Government of
South Australia



OLD WILPENA STATION

Located off the main Hawker to Blinman Road

Old Wilpena Station is one of the most scenically spectacular pastoral settlements in South Australia.

A working station for 135 years, Old Wilpena Station slipped into retirement in 1985. The settlement is now a tranquil archive of pastoral history.

Old Wilpena Station is also an important Aboriginal heritage site. Wilpena Pound and the Wilpena Station lands have enduring cultural significance for the Adnyamathanha people of the Flinders Ranges. The Old Wilpena Station building is now used for operational purposes, by officers of the National Parks and Wildlife Service.



BUNYEROO VALLEY ROADSIDE (AND PUBLIC LOOKOUTS)

The road in starts from the sealed Hawker to Blinman Road. The turnoff to the Gorge is approx 5km from the Wilpena junction.

The drive down to the valley offers vantage points giving spectacular views south of the Pound Range. The road continues on to Brachina Gorge and Aroona Valley joining the Brachina Gorge road at a tee junction.

BRACHINA GORGE ROADSIDE (AND PUBLIC LOOKOUTS)

The turnoff to Brachina Gorge and Aroona Valley can also be accessed through Bunyerroo Gorge road as above. Alternatively, road access is approx. 7km north of the Oraparinna Homestead (National Parks Station).

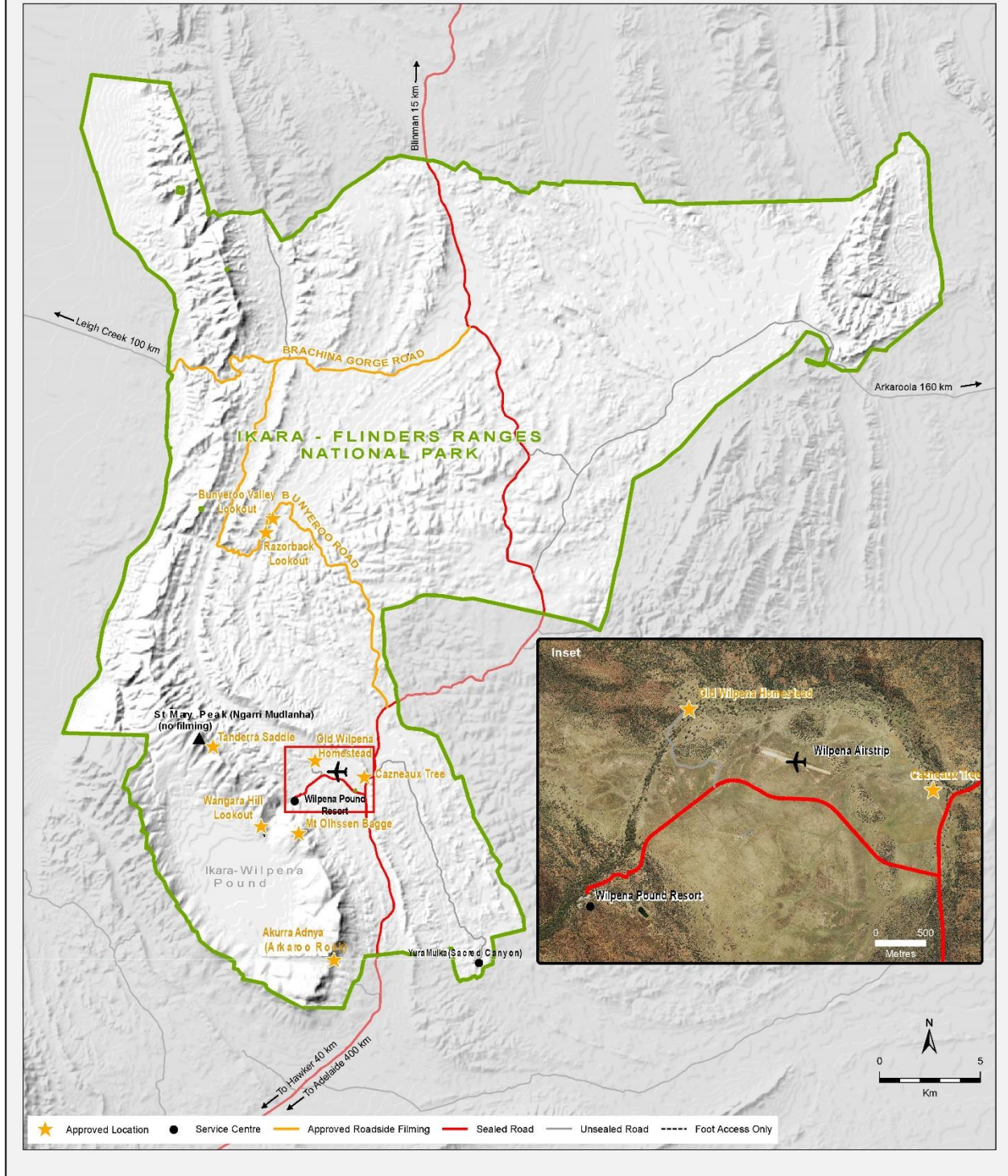
Brachina Gorge is one of the most popular and spectacular tourist attractions. The gorge is an important refuge for the Andu (Yellow footed-rock wallaby) as well as many species of birds and reptiles. The Brachina Gorge Geological Trail is a 20km drive that passes through 130 million years of earth history.



Government of
South Australia



IKARA - FLINDERS RANGES NATIONAL PARK Commercial Filming Access Map



Government of
South Australia

