

# Gawler River Flood Management

## Hillier fire ground rehabilitation works

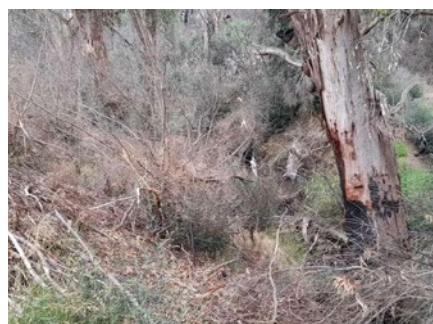
### Project Update - April 2022

#### Weed control

Weed control has taken place to remove invasive weeds. This will make way for native species that promote local biodiversity and riverbank stability.

This has also opened-up the river channel and created access for maintenance activities.

- 12 weed species
- 9,900m<sup>2</sup> woody weed control



BEFORE



AFTER



#### Tree maintenance

Tree maintenance was carried out to remove dead or 'at risk' branches at risk of falling into the river and causing downstream blockages during a flood event.

- 10 significantly compromised or dead trees removed
- 32 trees pruned to remove compromised or dead branches



#### Debris removed

Debris resulting from fire and maintenance activities was removed from the river to prevent downstream blockages during a flood event. Vegetation that contributes to the natural health and function of the river was left.

- 301 tonnes of logs were salvaged
- 50 tonnes of mulch was supplied to locals for reuse

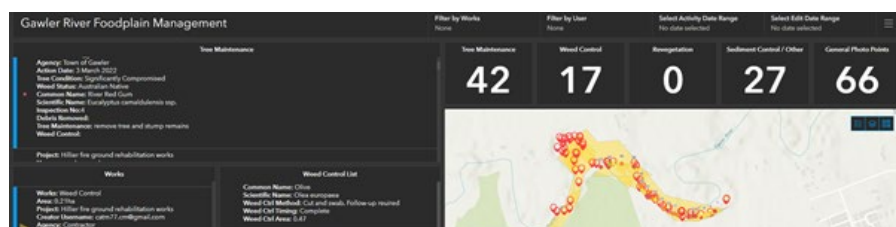


#### Reuse of materials

The reuse of removed materials was a key focus to achieve sustainability outcomes for the project.

- 169 tonnes for logs for firewood
- 55 tonnes of logs supplied to the Department for Environment and Water to reuse in nature play and landscaped spaces
- 45 tonnes supplied to the local community for various activities

During the project we collected real-time data using mobile field collection tools to assist project performance and reporting



This project has been delivered by the Department for Environment and Water and the Town of Gawler with funding assistance from the Stormwater Management Authority.

Valuable experience has been gained for our next project: river survey, levee repair and vegetation management.

To find out more about this and other Gawler River flood management projects underway:

Visit: <https://www.environment.sa.gov.au/topics/flood/projects> Or contact us at: [DEWFloodProjects@sa.gov.au](mailto:DEWFloodProjects@sa.gov.au)