

Dear Highbury Resident,

### **Introduction**

The State Government has engaged a consultant team lead by URPS Planners with WAX Design, EBS Ecology and Southfront, stormwater engineers to design, document and deliver Stage One of the Highbury Aqueduct project and prepare a Master Plan for of all the former aqueduct land.

A Concept Plan has been completed for Stage One and once this has been documented contractors will be engaged to undertake the works. It is anticipated that contractors will be working on site from early November.

During October the consultant team and staff from the Department of Environment, Water and Natural Resources (DEWNR) will be meeting with residents likely to be directly affected by the removal of boundary fences.

### **Let us know what you think**

If we have not made contact with you before October 8<sup>th</sup> and you would like the opportunity to raise issues with us you can send an email to [mail@urps.com.au](mailto:mail@urps.com.au) and put the words "*Highbury Aqueduct*" in the subject box.

If you would like someone to phone you back please include a contact number and the best time to call you.

Alternatively if you do not have access to email, URPS will run a telephone hotline. Please call Angela Hazebroek on 8331 0017 on Monday, October 15<sup>th</sup> between 9am and 9pm or Thursday, October 18<sup>th</sup> between 5pm and 9pm. If neither of these dates or times suit you please phone to make a time for us to call you back before October 31<sup>st</sup>.

**Highbury Aqueduct Stage One**

**Resident Information Sheet**

**Number 1**

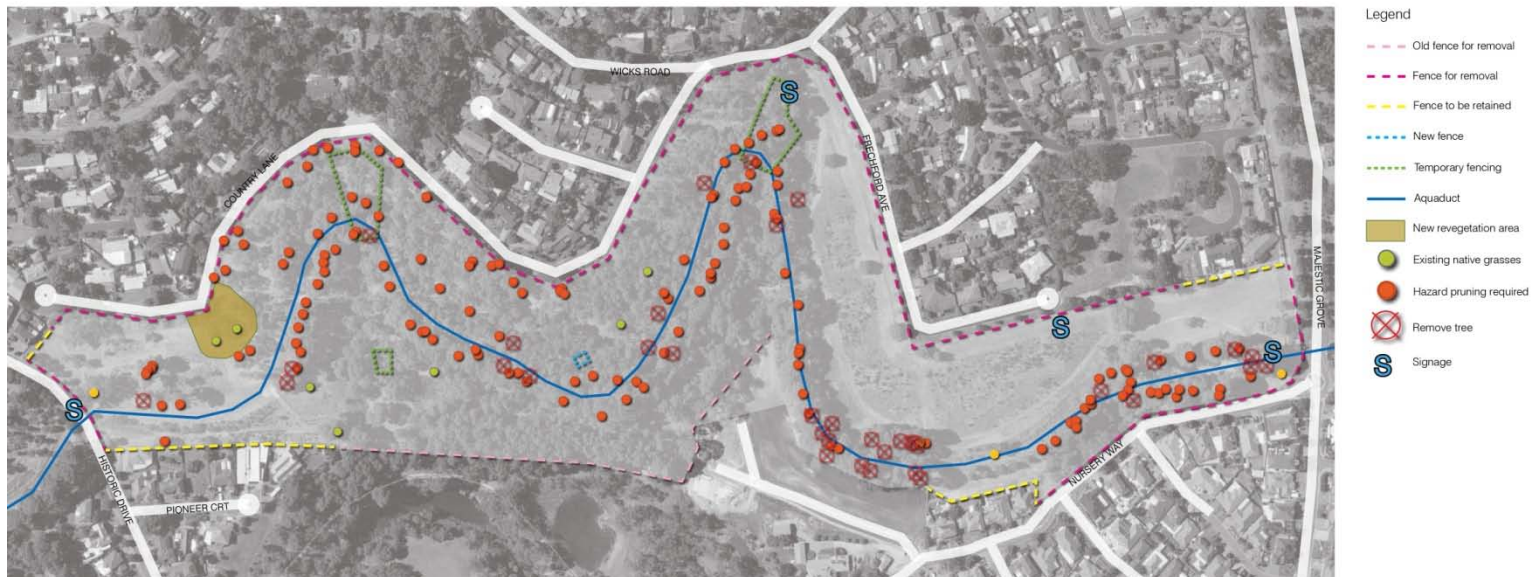
**October 2012**

## Stage One of the Project

Stage One of the project will involve:

- The removal of perimeter fencing between Majestic Grove and Historic Drive
- The removal of selected pine trees identified as a potential risk by a recent arborist's report
- Targeted weed control and re-vegetation in this section of the aqueduct
- Safety fencing around the historic aqueduct remains, SA Water infrastructure and native grasses that need to be protected
- Directional signage and links to the existing open space at Niquet Reserve.

## Map of Stage One



To view this plan in a larger format please go to: [www.urps.com.au](http://www.urps.com.au)

## Master Plan Development

While the Stage One works are being undertaken the consultant team will be working with the State Government Departments of Planning, Transport and Infrastructure (DPTI) and Environment, Water and Natural Resources (DEWNR) to develop a Master Plan to guide the provision of walking and cycling paths, visitor facilities, signage and interpretation, re-vegetation and tree management and stormwater management initiatives, potentially including wetlands and re-use opportunities.

Please look out for the Highbury Residents Information Sheet No. 2 in your letterboxes in mid November. It will contain details of the launch of Stage One and the opportunity for you to comment on the detailed Draft Master Plan.