

South Australian Heritage Council

HERITAGE NEWS MAY 2025



Image: Hart's Mill, Port Adelaide C 1880. Source State Library of South Australia. [B 6674]

Heritage News contains updates from the South Australian Heritage Council meetings held on 8th and 15th May 2025 and other topical news relating to conserving and promoting South Australia's unique heritage.



Government of
South Australia

Contents

Provisional Entries in the South Australian Heritage Register 3

Sisalkraft Factory Complex, 356 Torrens Road, Kilkeny. On Kaurna Country.....	3
Green Waterhole – Tank Cave Fossil Complex, Lot 550 Princes Highway Tantanoola. On the Country of the First Nations of the South East.....	4

Confirmations in the South Australian Heritage Register 5

Graham and Barbara Dickson House, 4 Marola Ave, Rostrevor. On Kaurna Country.....	5
Epworth Building, 33/33B Pirie Street, Adelaide. On Kaurna Country.	6

Places not entered on the SA Heritage Register 7

Dr Orchard Childhood Home, 6 Barrelder Road, Torrens Park. On Kaurna Country.....	7
---	---

Other Heritage News 8

Tour of Port Adelaide State Heritage Area. On Kaurna Country.....	8
Tour of the Torrens Island Quarantine Station	12
Seven places to visit in Port Adelaide.....	13
Seven places to eat in Port Adelaide.....	14
Retirement of a heritage stalwart.....	15
Mission Accomplished: Run for PTSD Ends at Torrens Training Depot.....	15
Congratulations to Keith Conlon OAM	16
Emeritus Professor Alison Mackinnon AM.....	17
Geoff Wallbridge.....	18
Heritage by numbers	18

The Criteria 19

<i>Heritage Places Act 1993</i> – Section 16—Heritage Significance	19
--	----

More information 20

Provisional Entries in the South Australian Heritage Register

Sisalkraft Factory Complex, 356 Torrens Road, Kilkenny. On Karna Country.

In 1956, the Former Sisalkraft Factory Complex was designed by architect Keith Neighbour and built for Sisalkraft Distributors SA Pty Ltd. The complex is an outstanding representative of a mid-twentieth century factory, exhibiting many of the key attributes typical of factories erected during the industrialisation of South Australia, c.1935-1965, notably its Modernist design elements and hard landscaping. The Sisalkraft Factory Complex is also an outstanding example of Postwar International architecture, observed through elements like its rectilinear shape, structural frame and curtain walls. Similarly, the Sisalkraft Factory Complex demonstrates a high degree of creative achievement through the holistic application of Modernist design elements across the complex as well as its distinctive rhomboid skylights and concrete parabolic arch.

The Council provisionally entered the Sisalkraft Factory Complex under criteria (d) and (e) of section 16 of the *Heritage Places Act 1993*.

This decision by Council triggers three months of community consultation. Read more [here](#).

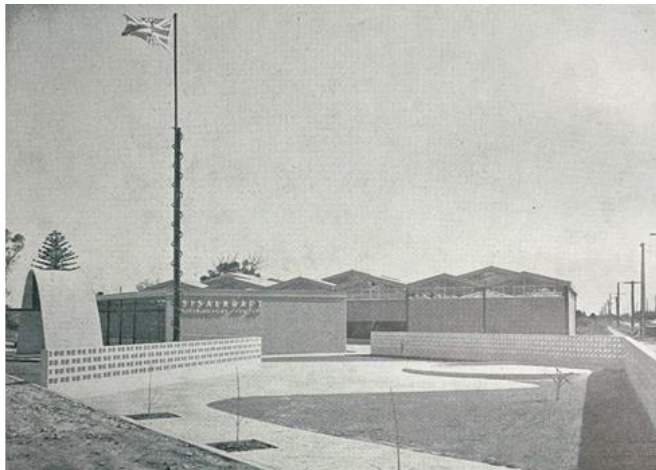


Image: Sisalkraft Factory circa 1956. Source: DEW files.



Image: Sisalkraft Factory. Source: DEW files.

Green Waterhole – Tank Cave Fossil Complex, Lot 550 Princes Highway Tantanoola. On the Country of the First Nations of the South East.

The Council provisionally entered the Green Waterhole – Tank Cave Fossil Complex under criteria (b), (c) and (g) and designated it as a place of palaeontological, geological and speleological significance.

The Green Waterhole - Tank Cave Fossil Complex contains the only known extensive underwater vertebrate fossil deposits in Australia. This unique freshwater depositional environment has ensured the preservation of extinct species not found anywhere else, with several additional species new to science recovered and awaiting description.

Please note that this place was previously listed as a State Heritage Place. It was identified some land parcels were missing and needed protection and a decision was made by Council to undertake the listing process again to include all land parcels.

This decision by Council triggers three months of community consultation.

You can read more about this decision [here](#).



Image: Green Waterhole aerial view. Source: DEW files.

Confirmations in the South Australian Heritage Register

Graham and Barbara Dickson House, 4 Marola Ave, Rostrevor. On Kurna Country.

The Graham and Barbara Dickson House is an outstanding representative of the Late Twentieth Century Adelaide Regional architectural style and has a special association with South Australian architect Robert Dickson. Robert Dickson was one of a small group of architects who established the Late Twentieth Century Adelaide Regional style creating a more relaxed and friendly form of modernism suited to South Australian conditions. Designed in 1958, it is one of Dickson's earlier commissions and acted as an experimental ground from which many of the key attributes of the style emerged.

This listing received positive interest from the community and resulted in 24 submissions, all of which were in favour of State Heritage registration.

The Council confirmed this place as a State Heritage Place under criteria e) and g) of section 16 of the *Heritage Places Act 1993*.

You can read more information about this place [here](#).



Image: View of rear elevation showing the detail the original master bedroom. Source: DEW files.



Image: 1968 master addition. Source: DEW files.

Epworth Building, 33/33B Pirie Street, Adelaide. On Kaurna Country.

Epworth Building demonstrates a high degree of aesthetic accomplishment and is an outstanding representative of the 'Inter-War Gothic' architectural style.

Epworth Building also has a special association with the work of the Methodist Church of Australasia, the unified body representing one of the oldest and once-largest Christian denominations in South Australia.

Epworth Building was Methodism's administrative headquarters for much of the twentieth century. Between 1927 and 1977, various key offices and departments were located in Epworth Building, including the Connexional Secretary and the President, as well as departments devoted to social services, including for women and children. The foreign and home mission offices were also situated in Epworth Building. Epworth building was also built to house the Methodist Book Depot and as a major commercial endeavour to raise revenue for the Church and its activities. It eventually became profitable after the Second World War.

Known for designing Gothic-inspired buildings, architect George Klewitz Soward drew heavily from the Gothic style in his design for Epworth Building. In doing so, Soward adapted what was a traditional style typically associated with schools and churches to a box-framed tall-building, then a cutting-edge and modern building type. Once completed in 1927, Epworth Building simultaneously conveyed its ecclesiastic associations and its modernity. This fusion of old and new resulted in an aesthetically pleasing and visually arresting building.

The Council confirmed this place as a State Heritage Place under criteria e) and g) of section 16 of the *Heritage Places Act 1993*.

You can read more information about this place [here](#).



Image: Epworth Building. Source: DEW files

Places not entered on the SA Heritage Register

Dr Orchard Childhood Home, 6 Barrelder Road, Torrens Park. On Kurna Country.

This place that was nominated is the former family home of notable South Australian doctor, cricketer and military historian Dr Barbara Orchard (b. 1930 – present).

The house was owned by Dr Orchard's father from 1935 to 1946, and subsequently by her mother until 1983. Dr Orchard lived in the house during her childhood, adolescence and early adulthood, a period of time covering her schooling, medical studies and early medical and sporting career, and then intermittently thereafter until 1983.

Dr Orchard played cricket at club, university, State and International (Test) levels, representing Australia against New Zealand and England in 1957 and 1958 respectively. She is a former President of the South Australian Women's Cricket Association and played an important role in the establishment of the South Australian Women's Memorial Playing Fields and its associated Trust, of which she is also trustee.

An assessment prepared by Heritage SA recommended against listing. It found that other places exist which better demonstrate Dr Orchard's contribution to South Australian history, notably the South Australian Women's Memorial Playing Fields, Corner Shepherds Hill and Ayliffes Roads, St Marys.

The Council considered the nomination and assessment report and determined that the threshold for listing was not met.



Image: 6 Barrelder Road, Torrens Park. Source: Realestate.com

Other Heritage News

Tour of Port Adelaide State Heritage Area. On Kaurna Country.

The South Australian Heritage Council undertook a guided walking tour focusing on the State Heritage Area of Port Adelaide and the immediate surrounds.

The Port Adelaide State Heritage Area contains the most substantial grouping of nineteenth century commercial and administrative buildings in South Australia.

Port Adelaide (the suburb) has 39 State Heritage Places of which 18 are located in the Port Adelaide State Heritage Area. Many of these were built for business, government and community functions to serve the flourishing Port and South Australia more generally.

In the Port Adelaide State Heritage Area, the State Heritage Places can be categorised as: Banks (3), Hotels (3), Shops (4), Warehouses (3), Government/Community Buildings (3) and Commercial (other) (2).



Image: Port Adelaide from Birkenhead. Source: Samuel White Sweet 1879

Port Adelaide played a major role in the economic development of South Australia as a major port.

In 1840 the customs house and harbour master's residence were built. In 1860, a combined police station, courthouse and customs house was built. In 1876 the Port Adelaide Institute building was completed and in 1879 offices were constructed for the Marine Board.

In the late 1800's businesses flourished at the Port and included agents, providores, farriers, ship chandlers, sailmakers and other trades. Associated warehouses were a common building type and included large wool stores adjacent to Port Dock.

Did you know the early settlement in Port Adelaide was dubbed Port Misery by merchant and travel writer T. Horton James in 1838, to describe the difficult living conditions and less than ideal facilities at the landing site.

Following the 1920s economic boom, there was a comprehensive program of wharf renewal and by the mid 1930's the Port Adelaide waterfront was dominated by large transit sheds.

Port Adelaide underwent change again in the 1980's with the development of containerisation and large-scale bulk handling in the years prior. This led to a reduction in waterside workers and a decline in the inner harbor as a shopping precinct.

The ready availability of land downstream for port expansion meant that land occupied by early buildings was not required for redevelopment, leading to the survival of the most substantial and contiguous grouping of nineteenth century commercial and administrative buildings in South Australia.



Image: Commercial Road, Port Adelaide street view. Source: DEW files 2024.



Image: Customs House, Port Adelaide. Source DEW files 2024.



Image: The SA Heritage Council, staff and representatives of the Port Adelaide Branch of the National Trust outside LLaw café on Lipson Street, Port Adelaide.



Image: McLaren Wharf, Port Adelaide. Circa 1913. Source: State Library of SA

One of the stops was Hart's Mill, the former Adelaide Milling Company mill site at Port Adelaide. It is the longest continuously serving flour milling enterprise in South Australia. This building was completed in 1855 under the direction of John Hart, a significant colonial figure who was three times Premier. It was designed to create an export market for the State's produce, and successfully shipped flour all over the world. Today - its engine house has been demolished and the internal floors and structure have been removed. \



Image: Harts Mill in 1991. Source DEW files.

While on the walking tour the Council noted with concern the vacancy rates of State Heritage buildings. While a building is unoccupied, it is often neglected leading to poor outcomes for heritage. The Council acknowledge that owners often require significant incentive to purchase or lease these buildings and carry out subsequent conservation works.

Many thanks to the Port Adelaide Branch of the National Trust for guiding the walking tour and imparting their knowledge, with particular thanks to Phil Winter and Brian Samuels.

Tour of the Torrens Island Quarantine Station

Following the Port Adelaide tour, the Council visited the Torrens Island Quarantine Station.

The Torrens Island Quarantine Station was established in 1855 as the first line of defence against the transmission of infectious diseases into the colony and is associated with human and animal quarantine practices in South Australia during the nineteenth and twentieth centuries. Developed over the course of a century, the Torrens Island Quarantine Station Complex is the only example of its class to exist in South Australia and retains a faithful representation of structures dating from the 1870s until the 1970s.

One of the buildings that the Council members visited was the old bathing block:

- Built in 1916 and used for the personal disinfection of each contact entering quarantine.
- It was fitted with baths for the first-class passengers, and showers for the second and steerage classes, however in practice the baths were reserved for women and the showers for men.
- The central large space was partitioned into individual cubicles, with separate 'foul' and clean corridors, entrances, and exits to prevent cross contamination.
- Contacts were disinfected using carbolic acid and hot water.

The Maritime Museum offer guided tours of the quarantine station. You can find more information and book your tour [here](#).



Seven places to visit in Port Adelaide

The South Australian Maritime Museum

Located at 126 Lipson Street, Port Adelaide, the Maritime Museum preserves the oldest nautical collection in Australia. The collection ranges from the Port Adelaide Lighthouse that was first lit in 1869 to a plaque that explorer Matthew Flinders left at Memory Cove in 1802 to mark the loss of eight seafarers.

This winter if you visit the SA Maritime Museum you get free entry to the National Motor Museum!

More information here:

[Maritime Museum](#)

National Railway Museum Port Adelaide

Located at 76 Lipson Street, Port Adelaide, the National Railway Museum is Australia's largest undercover railway museum with over 100 exhibits representing State, Commonwealth and private rail operators.

It is open daily from 10am to 4:30pm.

More information here:

[National Railway Museum - Adelaide, South Australia](#)

City of Adelaide Clipper Ship

This clipper ship was built in Sunderland, England and was launched in 1864.

It carried passengers to Adelaide, South Australia and it is estimated 250,000 Australians can trace their ancestry to the City of Adelaide!

Open from 10am to 3pm, the Clipper Ship is located at Dock 2, Honey Street, Port Adelaide. More information here:

[City of Adelaide clipper ship | City of Adelaide](#)

Adelaide Dolphin Sanctuary

This marine park is home to around 30 resident bottlenose dolphins, with another 400 transient dolphins that visit at various times. These wild dolphins come here to feed, play, socialise and nurse their calves.

Inside the Sanctuary you will find a 10,000 year-old mangrove forest, as well as sea-grass, salt-marsh, tidal flats and tidal creeks, which all provide habitat and food for the dolphins. The Sanctuary is a part of South Australia's largest port and has a number of Aboriginal and European cultural and historical places of interest.

[Adelaide... - National Parks and Wildlife Service South Australia](#)

Port Adelaide Visitor Information Centre

Visit this 1860 heritage listed building which originally housed the customs, courts, police station and jail cells.

There are several beautifully presented exhibition rooms in the Visitor Information Centre and it also offers free bike hire and a lot of useful information about making the most out of your visit to the Port.

[Visitor Information Centre | Port Adelaide Enfield](#)

Next door in the Port Community Arts Centre is a display of John Ford, renowned marine artist. More information here: [John Ford – Port Community Arts Centre](#)

Port Adelaide Lighthouse

This icon stands at the end of Commercial Road. It was first lit in 1869 having been prefabricated in England from iron plates and shipped to Adelaide in pieces.

[Port Adelaide Lighthouse | Maritime Museum](#)

Alberton Oval

Home of the Port Adelaide Football Club, this venue is worth a visit.

Alberton has been home to the club since 15 May, 1880.

Today you can grab a drink or bite to eat at “The Precinct at Alberton”. Check its webpage for opening hours. Read more on the history of the oval here:

[Alberton Oval and its Historic Stands | Port Adelaide Football Club Museum Tour](#)

Seven places to eat in Port Adelaide

The history and heritage continue with places to eat at the Port:

Birkenhead Tavern is situated on the banks of the Port River, opposite the Port Adelaide Docks. It opened in 1878. More information here: [Birkenhead Tavern](#)

The Lighthouse Wharf Hotel is located at the end of Commercial Road, next to the Lighthouse!

More information here: [The Lighthouse Wharf Hotel](#)

The Port Anchor Hotel is located at 15 Church Place, Port Adelaide. It was opened in 1876.

More information here: [Port Anchor Hotel](#)

Port Admiral Hotel is located at 55 Commercial Road in the heart of the Port. More information here: [The Port Admiral Hotel](#)

Dockside Tavern is located at 130 Lipson Street, Port Adelaide. It was opened in 1850. More information here: [Dockside Tavern in Port Adelaide \(Adelaide\) Pubs](#)

Pirate Life Brewing is located at 18 Baker Street, Port Adelaide. Enjoy a brewery tour, a meal or one of the more than 20 beers on tap. More information here: [Home - Pirate Life](#)

The Newmarket Hotel is located on the corner of Commercial Road and Dale Street. It was built in 1879 and designed by Adelaide architect G.C.E. Joachimi. More information here: [Newmarket Hotel – Port Adelaide's local.](#)

Retirement of a heritage stalwart

Hamish Angas has retired from Heritage South Australia after a long and illustrious career working to conserve our heritage places.

Hamish started work in State Government in May 1987 as an archivist for State Records. He began in the Heritage branch on 3 July 1989.

Managing the 'renaissance' of the Queen's Theatre (Gilles Arcade, Adelaide) from an urban ruin to a useful space for hire in the 1990s was one of his biggest achievements. This was also a personal achievement, as Hamish studied the history of the Queen's Theatre (amongst other Adelaide theatre buildings) as part of his Bachelor of Architecture degree. It is also his favourite heritage building.

Hamish was also very involved in gaining recognition for the Burra and Moonta Mines sites. These were National Heritage Listed in 2017.

Hamish's job evolved from being an assessment officer researching potential places for State heritage listing to finishing his career as a policy officer providing heritage advice to the Minister and the DEW Executive.

His last working day was Thursday 27 February 2025. Hamish enjoyed some well earned paid leave until his retirement in mid-April 2025.

Hamish will be missed by his colleagues at Heritage SA and his wisdom and knowledge will be very difficult to replace.

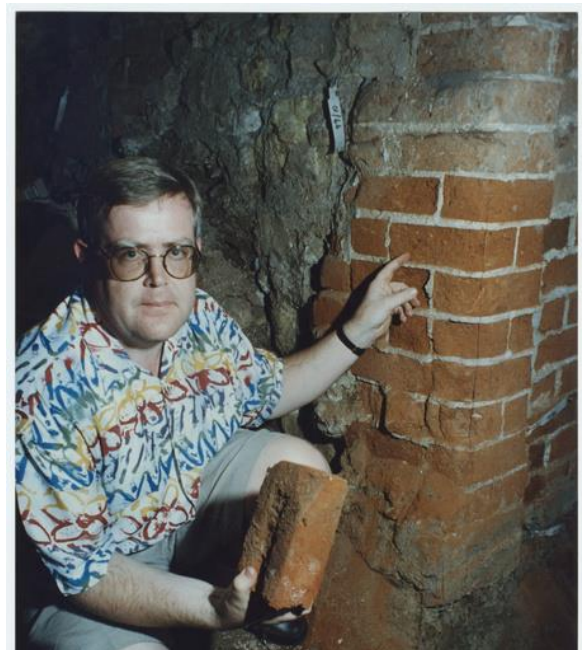


Image: Hamish Angas at the Queen's Theatre in 1995.

Source: State Library of South Australia [B 71847/14]

Mission Accomplished: Run for PTSD Ends at Torrens Training Depot

On May 24th, Sam Burford completed a remarkable 1,042km run from Melbourne to Adelaide following the route of the Great Ocean Road and concluding at Torrens Training Depot.

Averaging 45km per day over 23.5 days and climbing more than 10,000 metres in elevation, the challenge was as physically demanding as it was purposeful. As an Australian Army Combat Veteran and former paratrooper, Sam dedicated this effort to raising awareness and support for combat veterans, first responders, and frontline workers living with Post Traumatic Stress Disorder (PTSD) through the Aussie Frontline Foundation.

This newly established charity seeks to provide mental health support, resources, and rehabilitation for those who have given everything in the line of duty.

“Every step is a tribute to those who have served, suffered, and sacrificed. It’s a brutal challenge, but nothing compared to what these men and women go through every day. This is for them.”

– Sam Burford

In addition to raising nearly \$50,000 for his cause, Sam has brought significant attention to the importance of mental health support for those on the front lines. His run concluded at the historic Torrens Training Depot, where South Australia’s Metropolitan Fire Service constructed a symbolic arch from aerial platforms raised from the back of fire trucks in a gesture of solidarity.



Images: Left: Sam Burford runs solo along a remote stretch of road during his 1,042km journey. Right: Supporters gather to watch and celebrate the completion on Torrens Parade Ground. Images provided courtesy of Sam Burford.

Congratulations to Keith Conlon OAM

On Thursday 5th June, Keith Conlon OAM was awarded the Key to the City of Adelaide by the Lord Mayor Jane Lomax-Smith.

This award recognises Keith’s unwavering commitment to promote Adelaide’s heritage and history.

In Keith, you can’t find a better advocate for the heritage and history of Adelaide, indeed for the whole of South Australia.

Keith has been accurately telling the stories of our places for over fifty years. Probably best known for his role on the long-running Channel 9 series ‘Postcards’, Keith also spent six years as Chair of the South Australian Heritage Council where he championed listings worthy of entry in the South Australian Heritage Register. In this role he was instrumental in promoting the heritage system and making it accessible to the people.

Passionate about the Adelaide Park Lands, Keith organises a community bike ride each Wednesday (weather permitting). The journey takes cyclists through the Park Lands accompanied by Keith's stories of why the Park Lands are so special.

Affectionately known as "Mr South Australia" Keith Conlon is a most worthy recipient of the Key to the City!

Congratulations Keith from the South Australian Heritage Council and the staff at Heritage SA.



Image: Keith Conlon OAM receiving the Key to the City of Adelaide, with Lord Mayor Jane Lomax-Smith. Source: City of Adelaide.

Emeritus Professor Alison Mackinnon AM

It is with sadness we note that Alison died peacefully at home on 22 April 2025. Alison was a former member of the South Australian Heritage Council.

She was appointed Professor of History and Gender Studies in 1997. She was the Foundation Director of the Hawke Research Institute from 1997 to December 2005.

In November 2000 she was awarded an Honorary Doctorate by the University of Umeå, Sweden.

On January 26th 2009 she was appointed a Member of the Order of Australia (AM). From August to November 2000 she was a Visiting Fellow at the Humanities Research Centre, ANU and she returned to the Hawke Research Centre as a Visiting Fellow in August and September 2006. She was a Research Fellow at the Research School for Social Sciences, ANU, Canberra, in 1993-94, where she coordinated the gender strand of the 'Reshaping Australian Institutions project: towards and beyond 2001'. She is a past president of the Australian New Zealand History of Education Society.



Alison was born 22nd January 1941 and died on 22nd April 2025.

Our condolences are with Alison's family.

Geoff Wallbridge

In another loss for heritage in SA, it is with sadness we note the passing of Geoff Wallbridge who passed away peacefully on 29 May 2025.

In 1982, Geoff was a founder of Wallbridge Gilbert Aztec (WGA) who provide engineering solutions for big infrastructure projects, many of which have been built in Adelaide.

WGA said that Geoff was a mentor, innovator, and leader who embodied the values of integrity, humility and collaboration. He was known for his pragmatic approach to engineering, his deep care for people, and his ability to inspire those around him.

Our condolences are with Geoff's family.

[WGA Mourns the Passing of Co-Founder Geoff Wallbridge - WGA AU | Wallbridge Gilbert Aztec](#)

Heritage by numbers

South Australia has a rich and multifaceted history reflected in its tangible heritage. Here are some statistics about Heritage in South Australia, by the numbers:

- 1 World Heritage Place (Australian Fossil Mammal Sites at Naracoorte)
- 10 National Heritage Places
- 11 Commonwealth Heritage Places
- 2347 Confirmed State Heritage Places
- 6 Provisionally listed State Heritage Places
- 17 State Heritage Areas
- 11 State Heritage Objects
- 17 State Heritage Places Designated for their archaeological significance
- 54 State Heritage Places Designated (26 with geological significance, 16 with palaeontological significance and 4 with speleological significance (noting six places have more than one type of designation)).
- Over 7,250 Local Heritage Places in 27 of the 68 Local Councils of SA

The Criteria

Heritage Places Act 1993 – Section 16—Heritage Significance

A place is of heritage significance if it satisfies one or more of the following criteria:

- (a) it demonstrates important aspects of the evolution or pattern of the State's history; or
- (b) it has rare, uncommon or endangered qualities that are of cultural significance; or
- (c) it may yield information that will contribute to an understanding of the State's history, including its natural history; or
- (d) it is an outstanding representative of a particular class of places of cultural significance; or
- (e) it demonstrates a high degree of creative, aesthetic or technical accomplishment or is an outstanding representative of particular construction techniques or design characteristics; or
- (f) it has strong cultural or spiritual associations for the community or a group within it; or
- (g) it has a special association with the life or work of a person or organisation or an event of historical importance.

More information

If you would like to know more about the work of the South Australian Heritage Council and Heritage South Australia, here are some useful links.

Receive information through our email distribution list. Email us at:
dew.heritage@sa.gov.au

Web: <https://www.environment.sa.gov.au/topics/heritage>



Facebook: <https://www.facebook.com/heritagesouthaustralia>



LinkedIn - Heritage South Australia:



Published by the South Australian Heritage Council
Government of South Australia
12 June 2025

Telephone +61 (8) 8429 8469

www.environment.sa.gov.au



With the exception of the Piping Shrike emblem, other material or devices protected by Aboriginal rights or a trademark, and subject to review by the Government of South Australia at all times, the content of this document is licensed under the Creative Commons Attribution 4.0 Licence. All other rights are reserved.

© Crown in right of the State of South Australia



Government of
South Australia