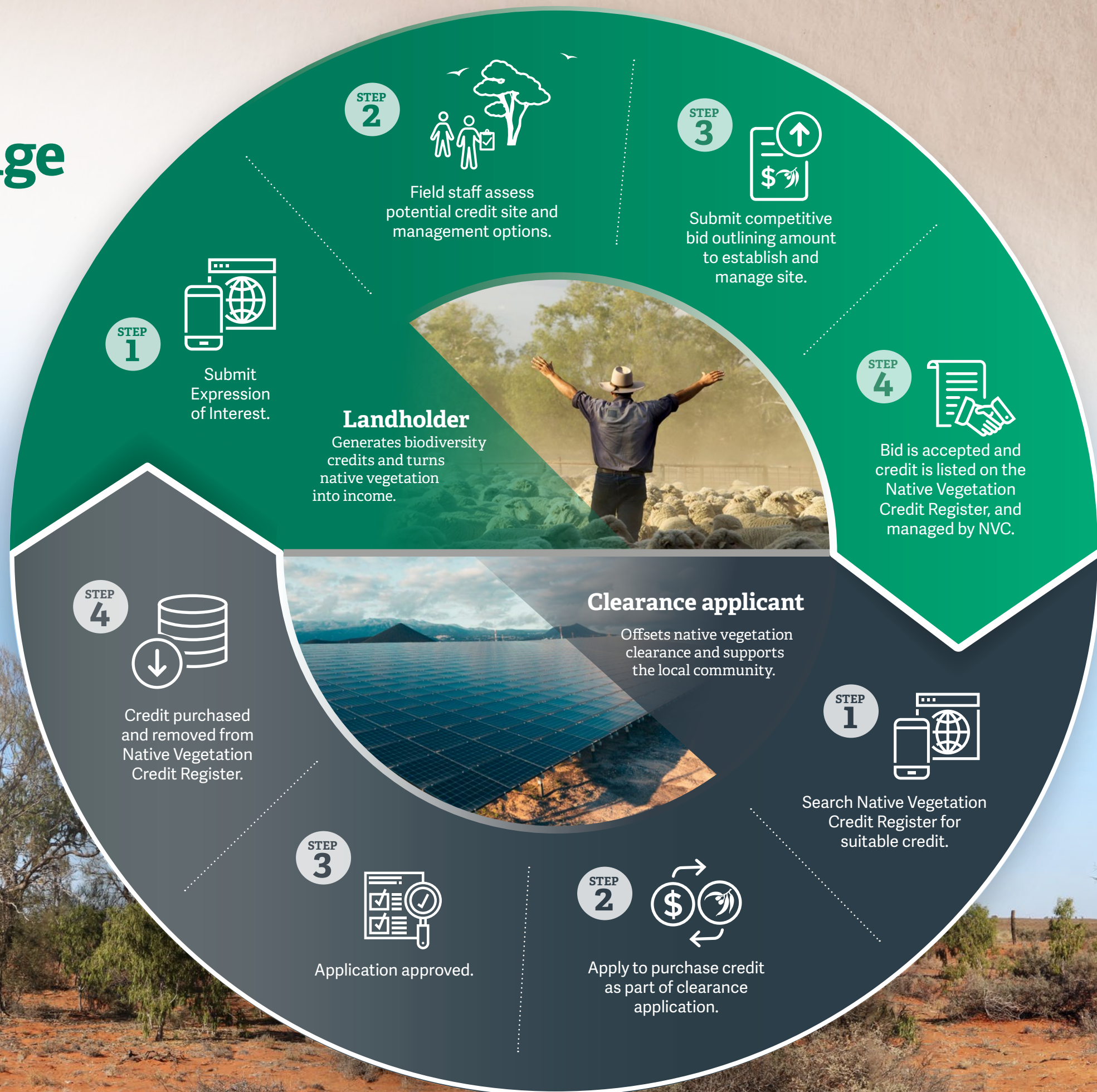




Biodiversity Credit Exchange

The Biodiversity Credit Exchange provides eligible landholders with funding to manage and protect areas of native vegetation on their land in order to generate biodiversity credits. These credits are sold to buyers that are required to offset vegetation clearances in the same region.



An initiative of



Government of
South Australia



Native
Vegetation
Council

For more information: www.environment.sa.gov.au/bce