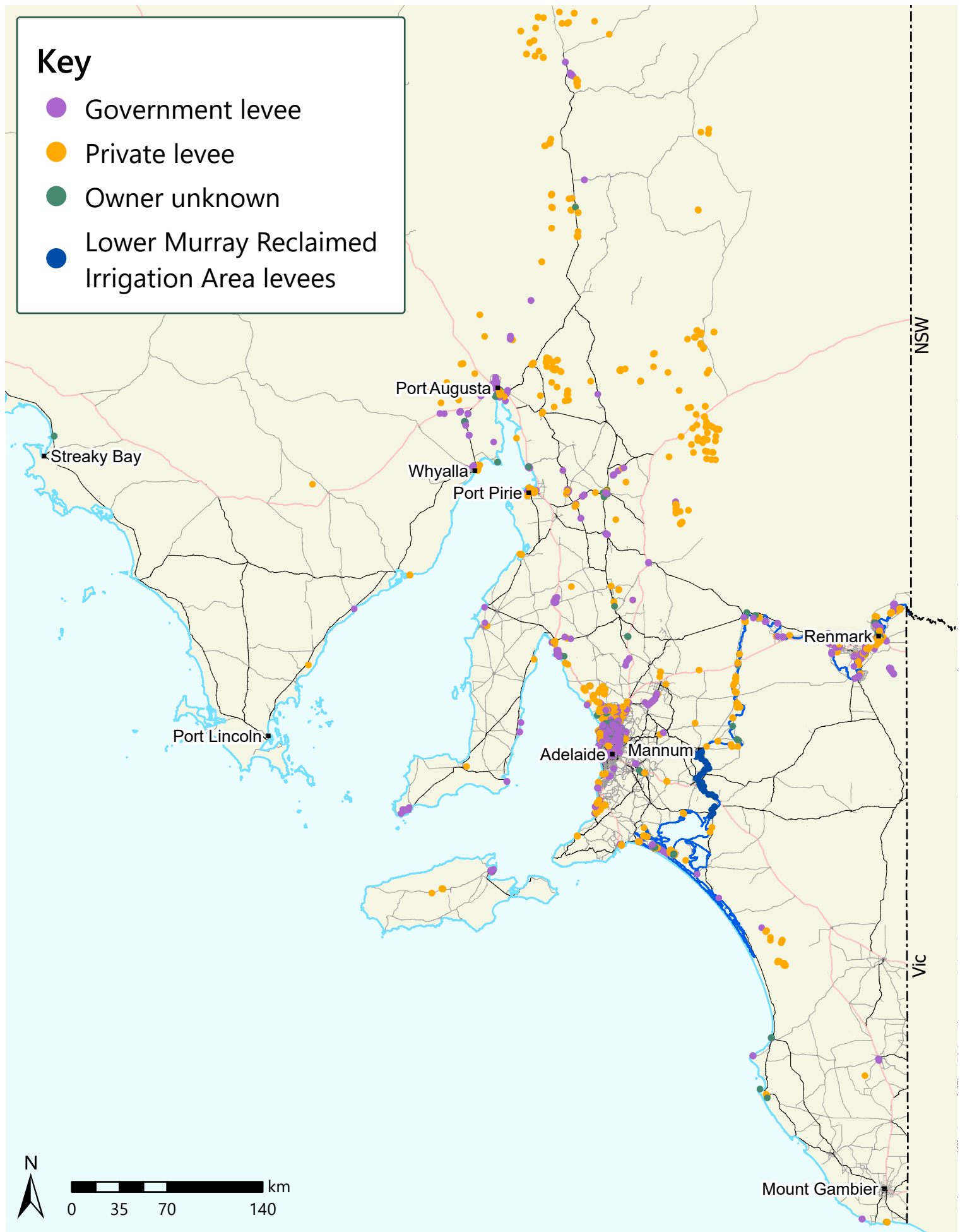


Key

- Government levee
- Private levee
- Owner unknown
- Lower Murray Reclaimed Irrigation Area levees



SA Levee Bank Dataset

Last updated July 2023

The Levee Bank dataset is maintained by DEW and will be used to inform the Improving Levee Bank Management Project (excluding the Lower Murray Reclaimed Irrigation Area levees).

Points on the map indicate the general location of levee banks. The full levee bank dataset can be accessed online via the LocationSA Map Viewer: <https://location.sa.gov.au/viewer/>



Government of South Australia
Department for Environment
and Water